

## Supporting Information

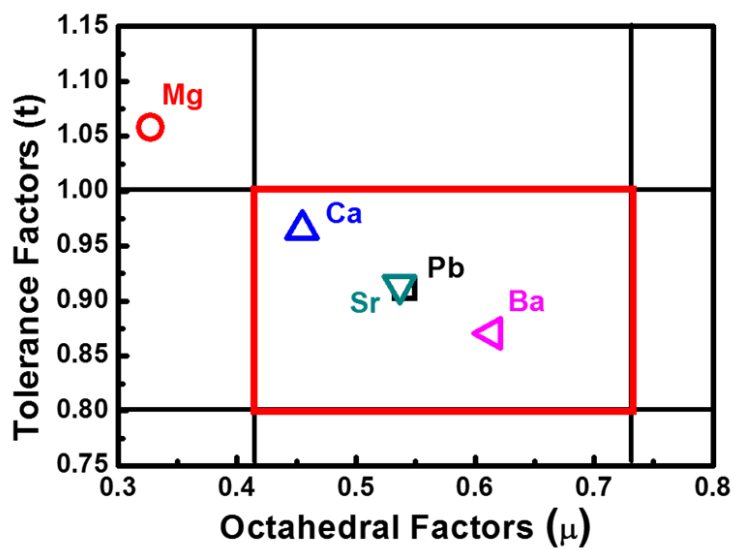
### Enhancing Perovskite Solar Cell Performance and Stability by Doping Barium in Methylammonium Lead Halide

Shun-Hsiang Chan,<sup>a</sup> Ming-Chung Wu,<sup>a,b,c\*</sup> Kun-Mu Lee,<sup>a,b,c</sup> Wei-Cheng Chen,<sup>a</sup> Tzu-Hao Lin,<sup>a</sup> and Wei-Fang Su<sup>d\*</sup>

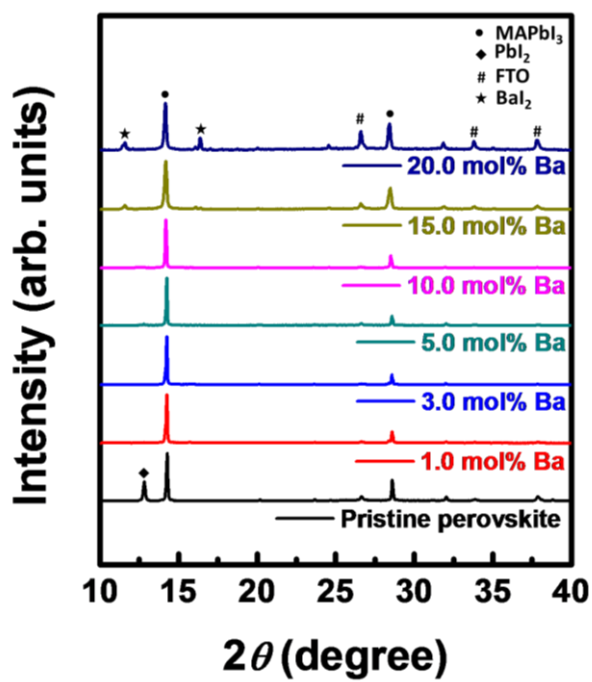
- <sup>a.</sup> Department of Chemical and Materials Engineering, Chang Gung University, Taoyuan 33302, Taiwan.
- <sup>b.</sup> Center for Reliability Sciences & Technologies, Chang Gung University, Taoyuan 33302, Taiwan.
- <sup>c.</sup> Division of Neonatology, Department of Pediatrics, Chang Gung Memorial Hospital, Taoyuan 33305, Taiwan.
- <sup>d.</sup> Department of Materials Science and Engineering, National Taiwan University, Taipei 10617, Taiwan.

**Table S1.** The stoichiometric ratio of elements as determined by EDS for pristine perovskite and 3.0 mol% Ba-doped perovskite film.

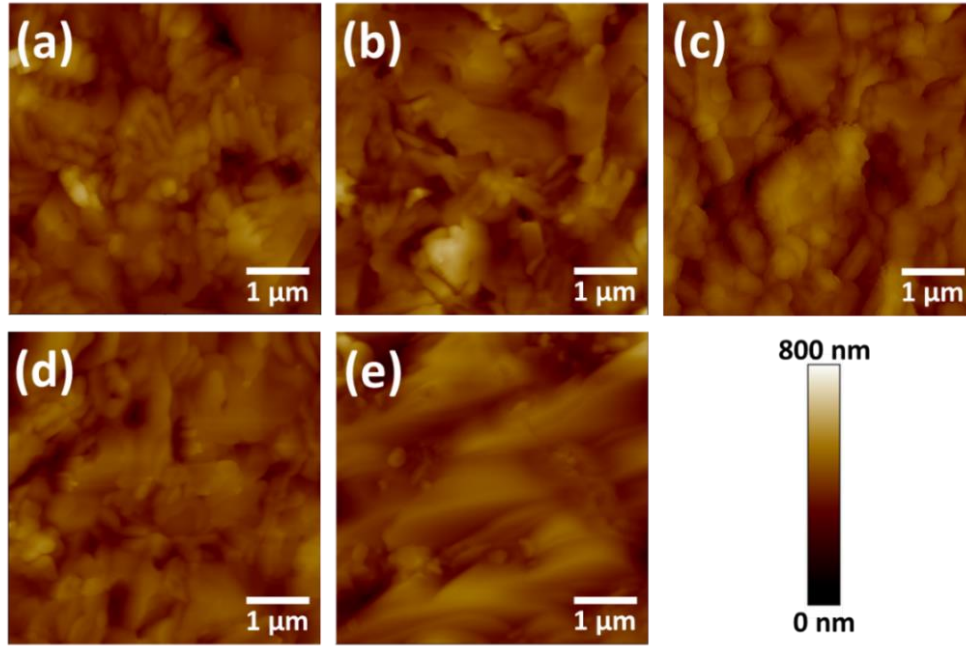
Perovskite	Pb (at.%)	Ba (at.%)	Ba/Pb+Ba (%)	I (at.%)	Cl (at.%)	I/I+Cl (%)
$\text{CH}_3\text{NH}_3\text{PbI}_{3-y}\text{Cl}_y$	25.46	-	-	67.96	6.58	91.17
$\text{CH}_3\text{NH}_3\text{Ba}_{0.03}\text{Pb}_{0.97}\text{I}_{3-y}\text{Cl}_y$	23.85	0.71	2.89	69.15	6.29	91.66



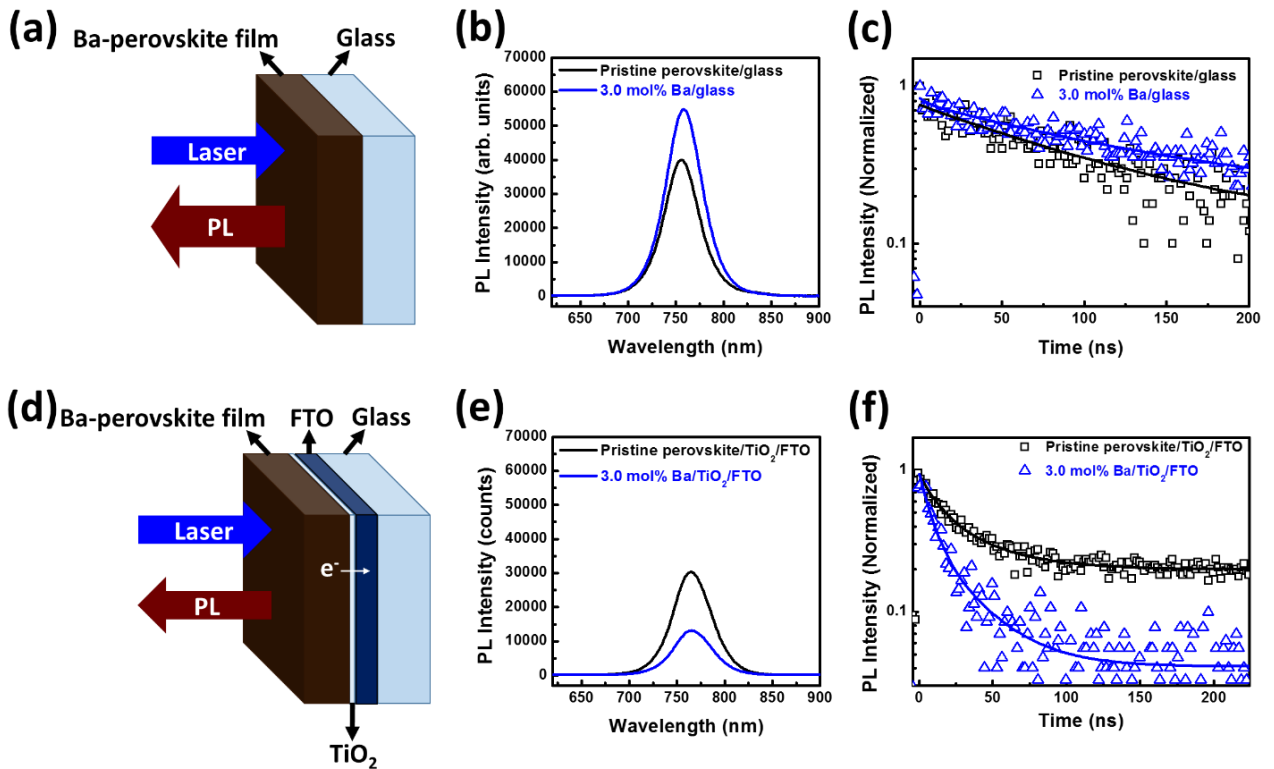
**Figure S1.** Plot of tolerance factors versus octahedral factors of  $\text{CH}_3\text{NH}_3\text{MI}_3$  (M=Mg, Ca, Sr and Ba).



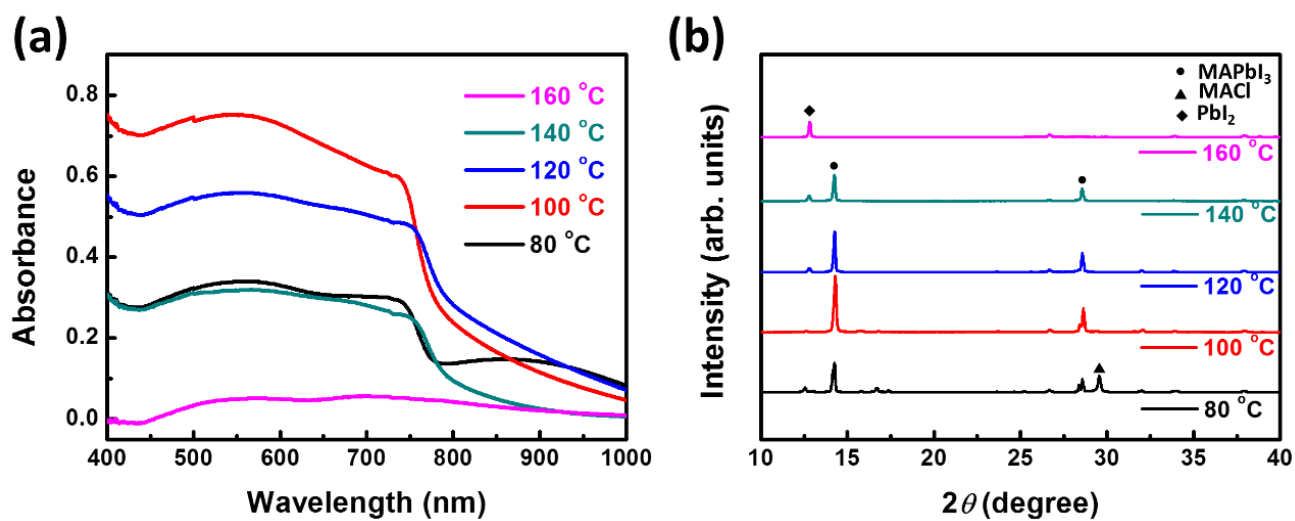
**Figure S2.** XRD patterns of perovskite films with different  $\text{Ba}^{2+}$  doping concentrations.



**Figure S3.** AFM images of (a) the pristine perovskite film, (b) 1.0 mol%, (c) 3.0 mol%, (d) 5.0 mol%, and (e) 10.0 mol% Ba<sup>2+</sup>-doped perovskite films.



**Figure S4.** (a, d) The schematic diagram, (b, e) photoluminescence spectra and (c, f) time-resolved photoluminescence decays of pristine perovskite and 3.0 mol% Ba-doped perovskite film on (a, b, c) the glass substrate and (d, e, f) the TiO<sub>2</sub>/FTO glass substrate.



**Figure S5.** (a) The absorption spectra and (b) XRD patterns of the 3.0 mol% Ba-doped perovskite film with different annealing temperatures.