

Supporting Information for

3D Conductive Network with High Loading Li₂S@C for High Performance Lithium-Sulfur Batteries

Dong-huang Wang ^[a], Dong Xie ^[ab], Xin-hui Xia ^{*[a]}, Xu-qing Zhang ^[a], Wang-jia

Tang ^[a], Yu Zhong ^[a], Jian-bo Wu^[c], Xiu-li Wang ^[a] and Jiang-ping Tu ^{*[a]}

[a] State Key Laboratory of Silicon Materials, Key Laboratory of Advanced Materials and Applications for Batteries of Zhejiang Province, and School of Materials Science and Engineering, Zhejiang University, Hangzhou 310027, China

E-mail: helloxxh@zju.edu.cn, tujp@zju.edu.cn, tujplab@zju.edu.cn

[b] Guangdong Engineering and Technology Research Center for Advanced Nanomaterials, School of Environment and Civil Engineering, Dongguan University of Technology, Dongguan 523808, China.

[c] College of Physics & Electronic Engineering, Taizhou University, Taizhou 318000, China

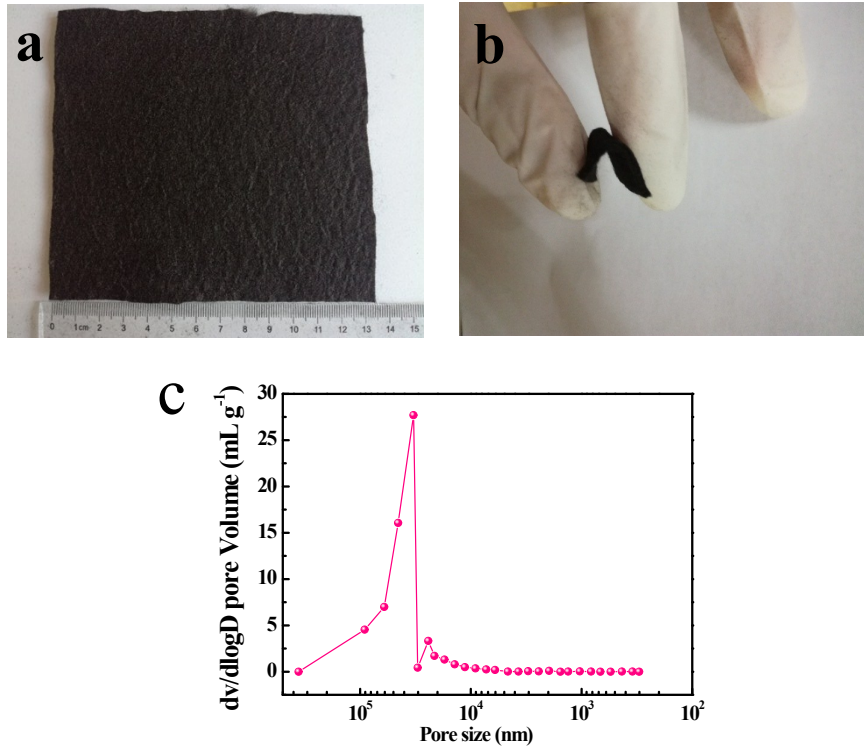


Figure S1. (a-b) Photograph of carbon felt, (c) MIP result of carbon felt.

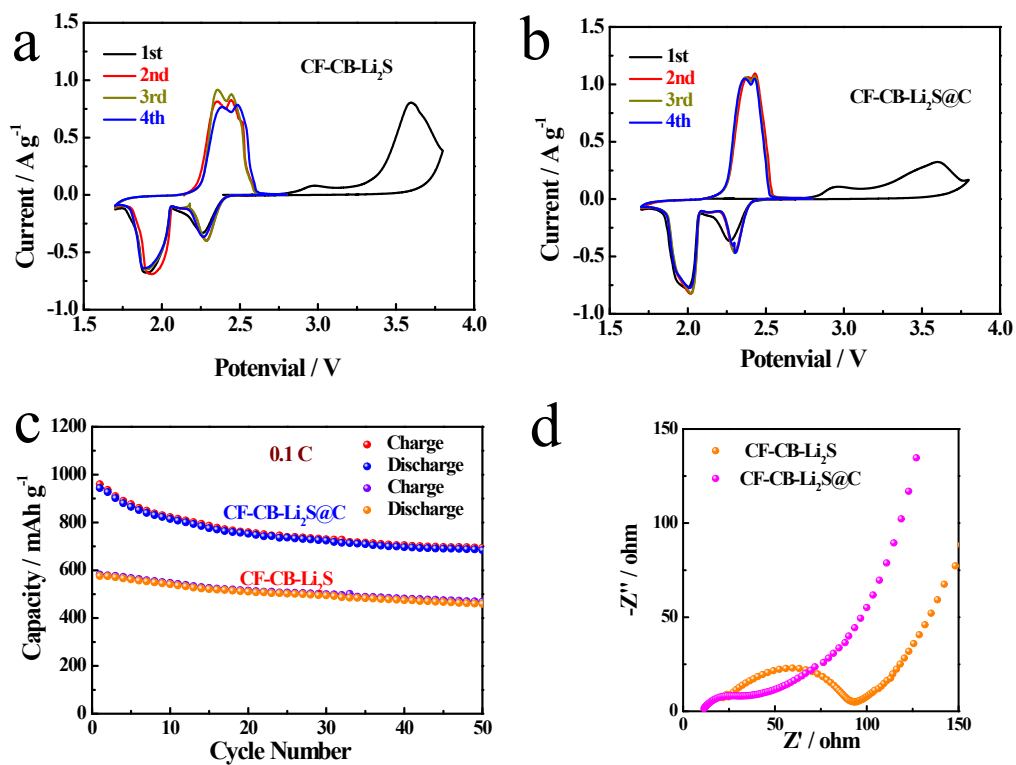


Figure S2. CV curves of (a) CF-CB-Li₂S and (b) CF-CB-Li₂S@C cathode at a scan rate of 0.1 mV s⁻¹, (c) cycling performance at 0.1 C, (d) Nyquist plots after activation process.

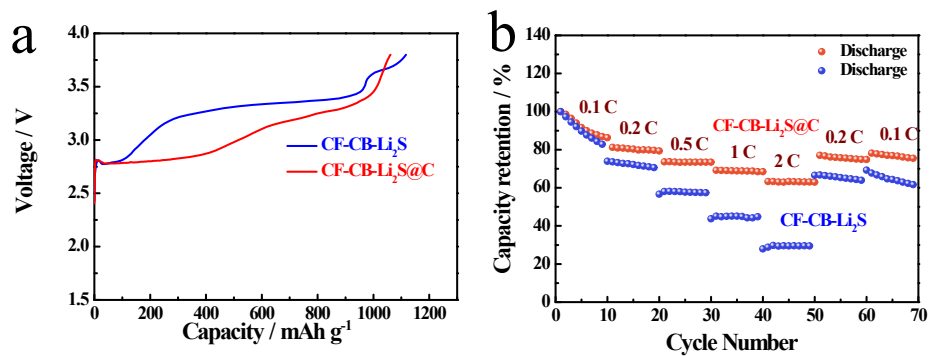


Figure S3. (a) The first charging voltage profiles of CF-CB-Li₂S and CF-CB-Li₂S@C cathodes, (b) capacity retention of CF-CB-Li₂S and CF-CB-Li₂S@C cathodes.

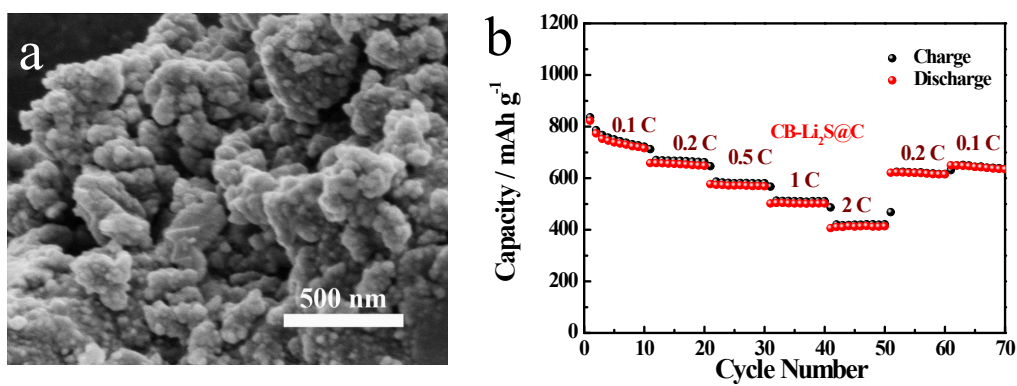


Figure S4. (a) A SEM image of CB-Li₂S@C, and (b) rate performance of CB-Li₂S@C at current rates ranging from 0.1 C to 2 C

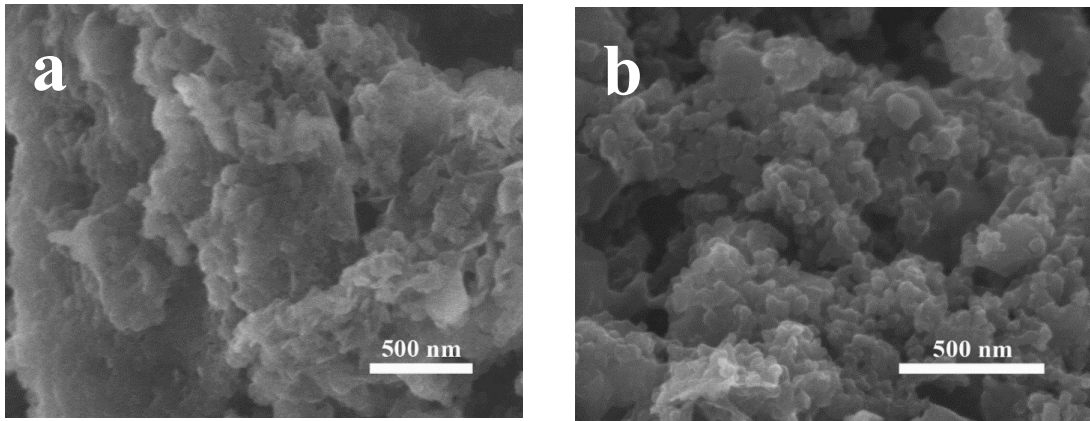


Figure S5. SEM images of (a) CF-CB-Li₂S and (b) CF-CB-Li₂S@C after 200 cycles at 1 C.