

Electronic Supplementary Information (ESI)
for

**Dual-Responsive Core-Crosslinked Polyphosphoester-Based
Nanoparticles for pH/Redox-Triggered Anticancer Drug Delivery**

*Yue Sun, Xueqiong Du, Jinlin He, Jian Hu, Mingzu Zhang and Peihong Ni**

College of Chemistry, Chemical Engineering and Materials Science, State and Local Joint Engineering

Laboratory for Novel Functional Polymeric Materials, Jiangsu Key Laboratory of Advanced Functional

Polymer Design and Application, Suzhou Key Laboratory of Macromolecular Design and Precision

Synthesis, Soochow University, Suzhou 215123, P. R. China.

* To whom correspondence should be addressed. Peihong Ni (E-mail: phni@suda.edu.cn).

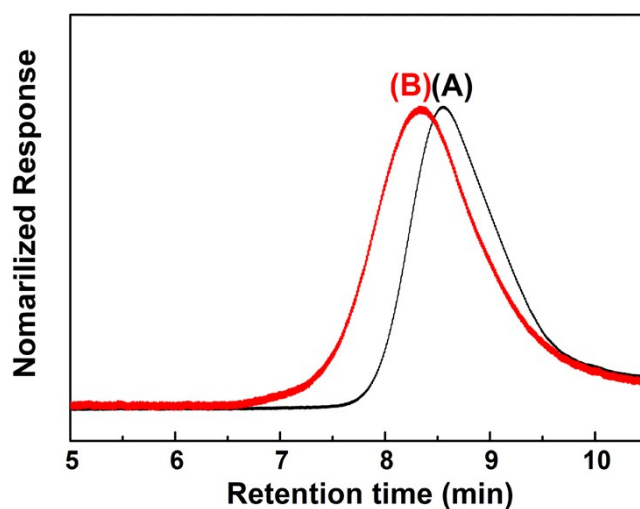


Fig. S1 GPC elution curves of (A) PTX-PBYP, (B) PTX-PBYP-*b*-PEEP in DMF.

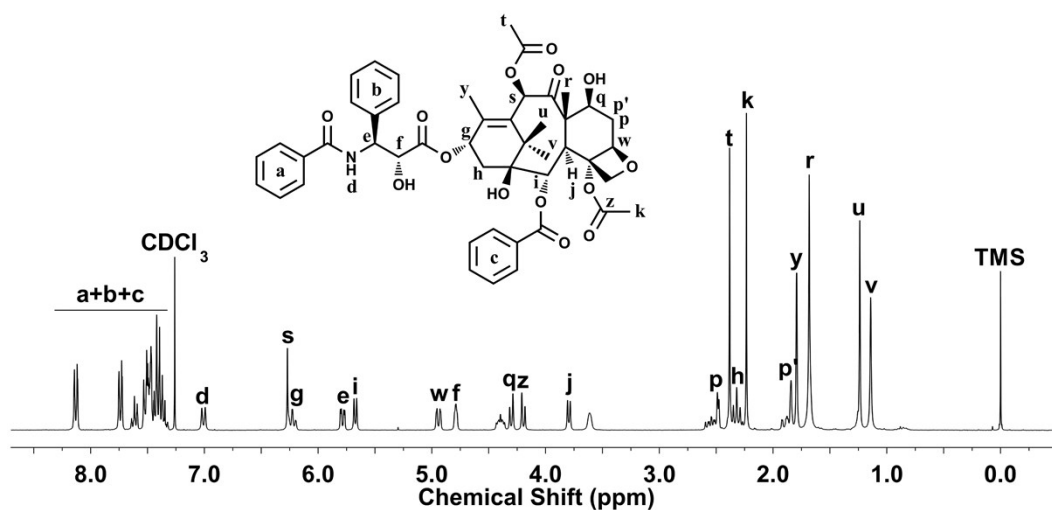


Fig. S2 ¹H NMR spectrum of PTX. (Solvent: CDCl₃).

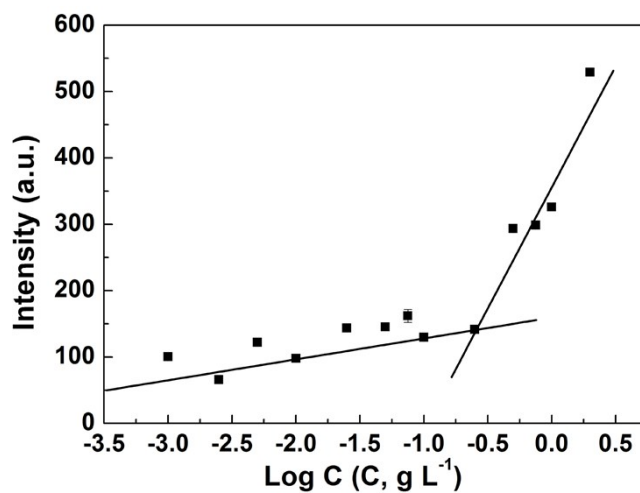


Fig. S3 Intensity of the fluorescence emission spectrum of Nile red as a function of

logarithm concentration of PBMAE in aqueous solution.

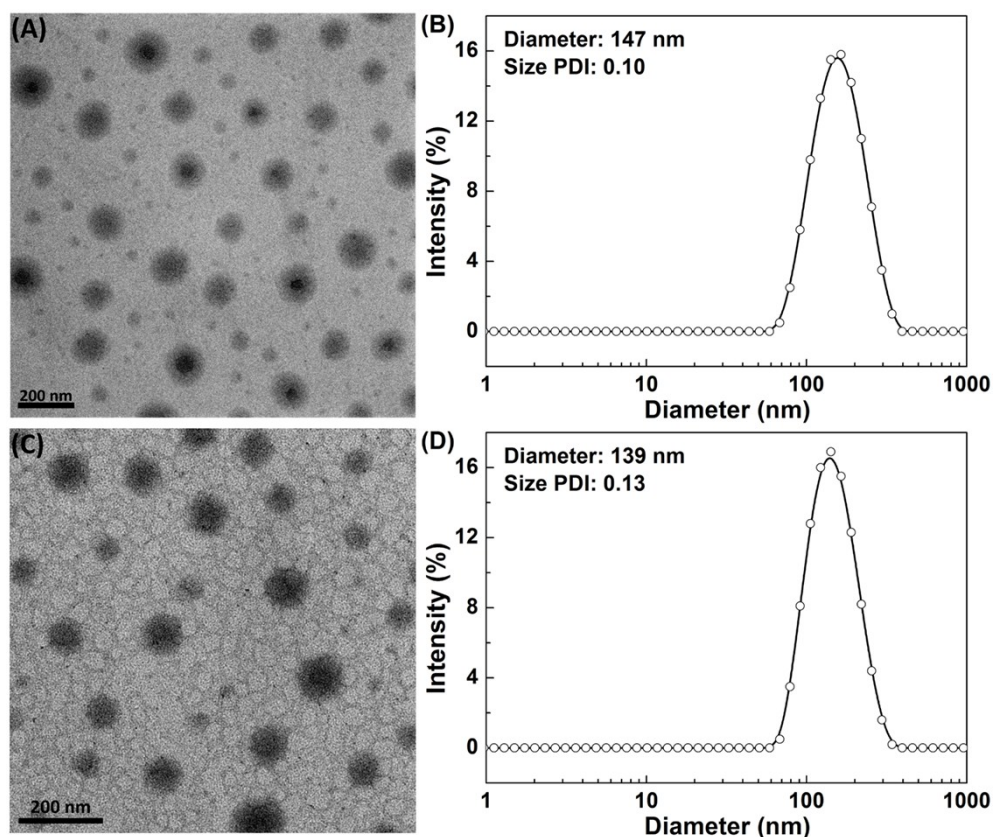


Fig. S4 (A) TEM image of the BNPs (scale bar = 200 nm); (B) the particles size distribution curve corresponding to the TEM sample (A); (C) TEM image of the CCL NPs (scale bar = 200 nm); (D) the particles size distribution curve corresponding to the TEM sample (C).

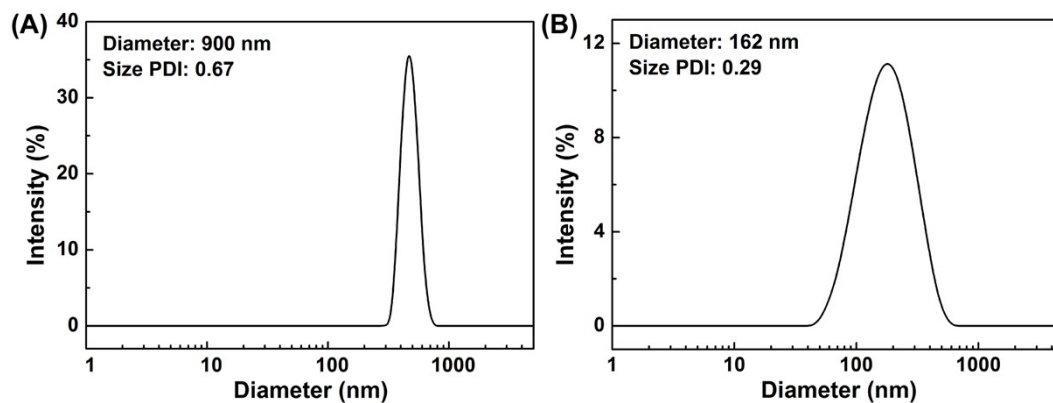


Fig. S5 The particles size distribution curves of CCL NPs against (A) DMSO, (B) 100-

fold dilution.

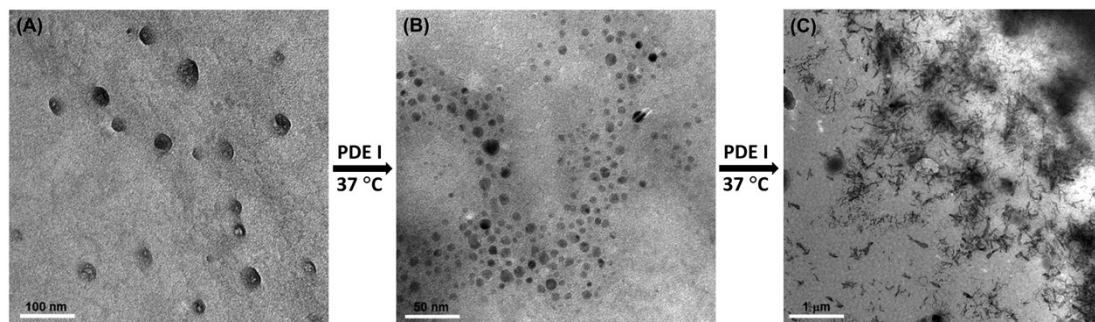


Fig. S6 TEM images of the BNPs after incubation with PDE I at 37 °C for (A) 24 h, (B) 48 h and (C) 72 h.