

Supporting Information

Microfiber-reinforced Nanofibrous Scaffolds with Structure and Material Gradients to Mimic Ligament-to-bone Interface

Jiankang He *, Nan Jiang, Ting Qin, Weijie Zhang, Zhuo Liu, Yaxiong Liu and Dichen Li

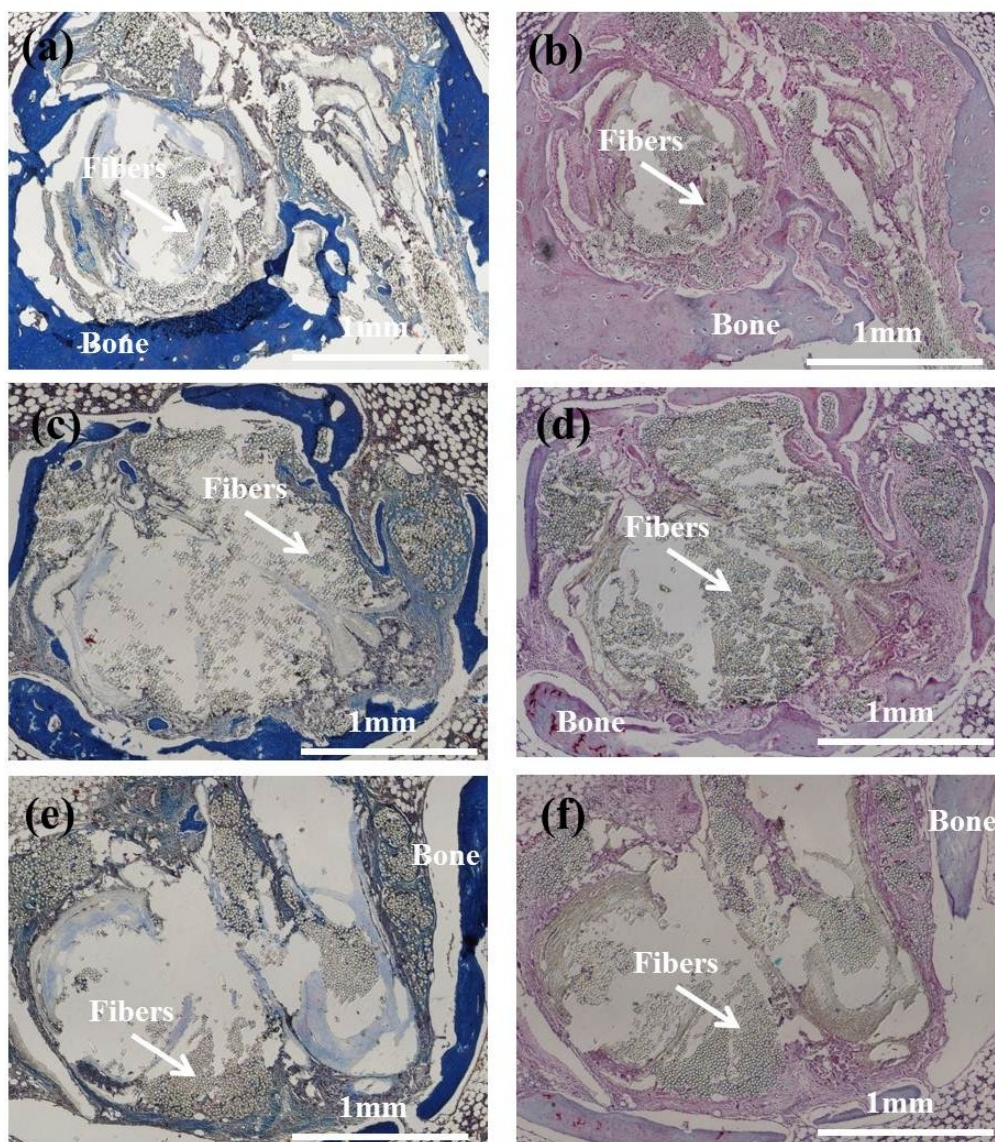


Figure S1 Histological images of transverse sections of the regenerated grafts in the tibial tunnel after implantation for 3 months. (a-b) Masson and Safranin O-Fast Green stains of the transverse sections at proximal region of the tibial tunnel, (c-d) Masson and Safranin O-Fast Green stains of the transverse sections at middle region of the tibial tunnel, (e-f) Masson and Safranin O-Fast Green stains of the transverse sections at distal region of the tibial tunnel.