

Supporting Information

Nano-Functionalized Long-Period Fiber Grating Probe for Disease-Specific Protein Detection

Deependra Tyagi, Satyendra Kumar Mishra, Bing Zou, Congcong Lin, Ting Hao, Ge Zhang, Aiping Lu*, Kin Seng Chiang*, and Zhijun Yang*

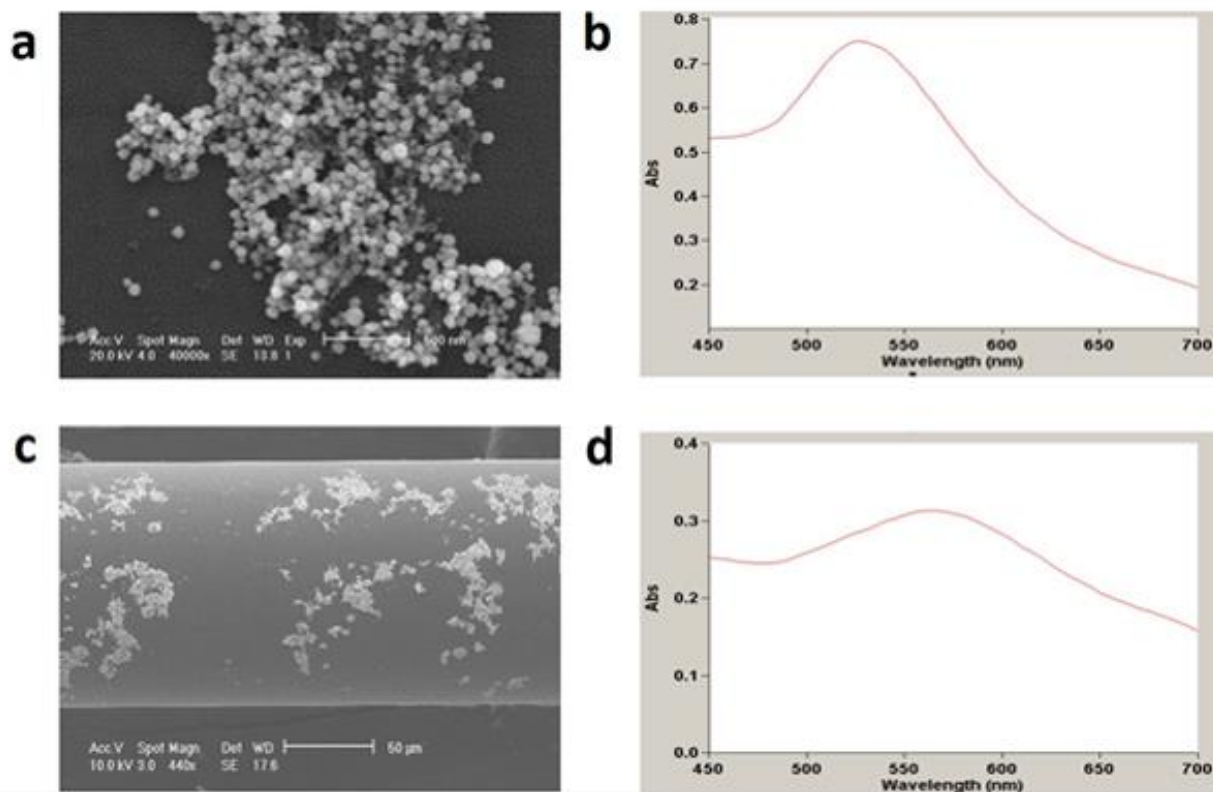


Figure S1. (a) TEM image and (b) UV-Vis spectra of AuNPs; (c) TEM image and (d) UV-vis spectra of the LPFG with AuNPs deposited on its surface.

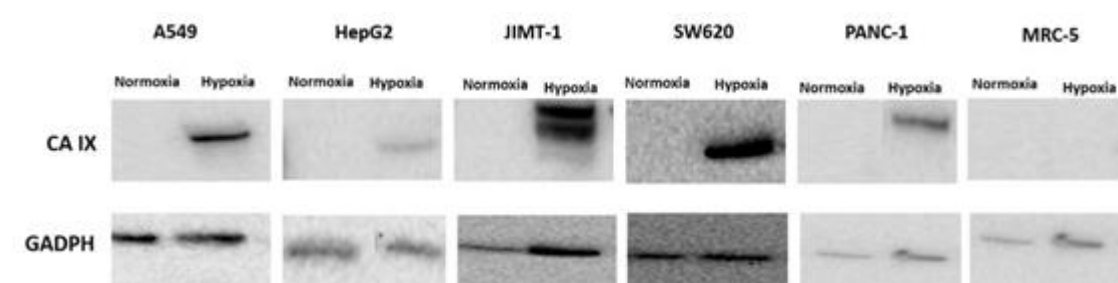


Figure S2. Expression analysis of CA IX in A549, HepG2, JIMT-1 SW620, PANC-1 carcinoma cell lines and MRC-5 normal fibroblast cell line under normoxic and hypoxic conditions by Western blot assay using GAPDH as loading control.