

## Supporting information:

### Topographical Impact of Silver Nanolines on the Morphology of Neuronal SH-SY5Y Cells

Ifat Nissan,<sup>a,c</sup> Hadas Schori,<sup>b,c</sup> Vijay Bhooshan Kumar,<sup>a,c</sup> Merav Antman Passig,<sup>b,c</sup> Orit Shefi<sup>b,c\*</sup> and Aharon Gedanken<sup>a,c\*</sup>

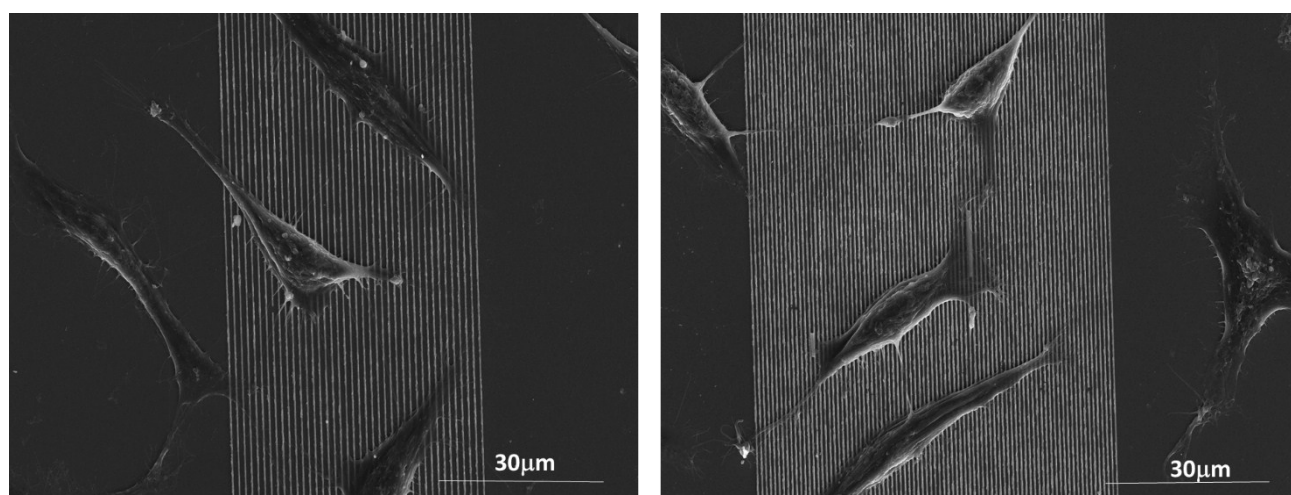
<sup>a</sup>*Department of Chemistry, Bar-Ilan University, Ramat Gan 5290002, Israel*

<sup>b</sup>*Faculty of Engineering, Bar-Ilan University, Ramat Gan 5290002, Israel*

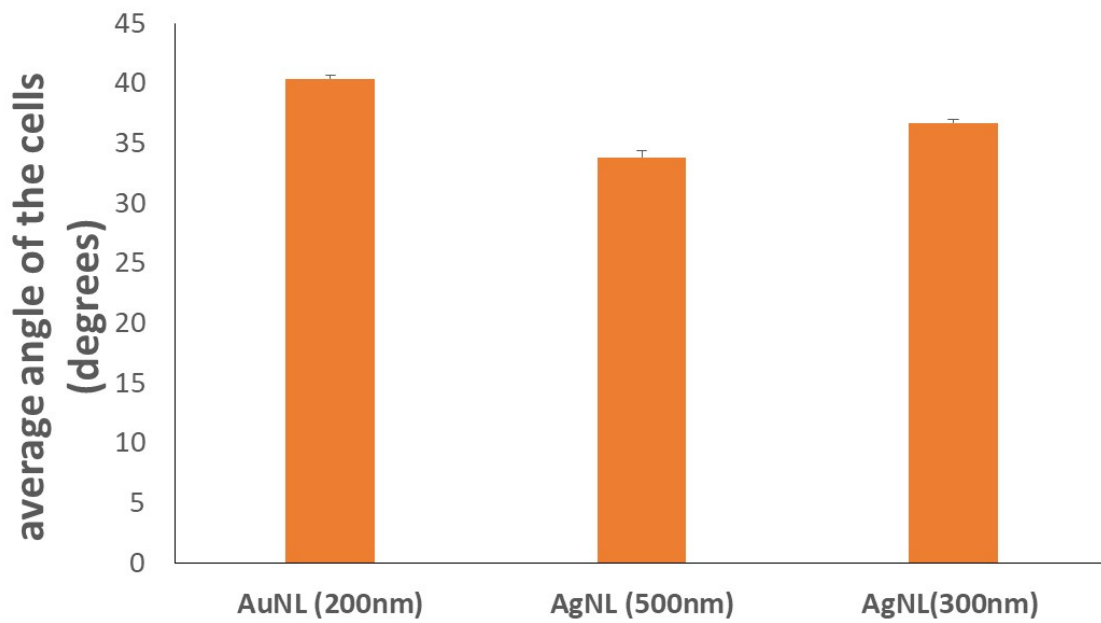
<sup>c</sup>*Bar-Ilan Institute for Nanotechnology and Advanced Materials, Bar-Ilan University, Ramat Gan 5290002, Israel*

\*Corresponding authors: *Aharon Gedanken, mail: [gedanken@biu.ac.il](mailto:gedanken@biu.ac.il) and Orit Shefi, mail: [orit.shefi@biu.ac.il](mailto:orit.shefi@biu.ac.il)*

Ifat Nissan ([ifat.nissan@gmail.com](mailto:ifat.nissan@gmail.com)) Hadas Schori ([hadas.schori@gmail.com](mailto:hadas.schori@gmail.com)) Vijay Bhooshan Kumar ([vijaybhushan86@gmail.com](mailto:vijaybhushan86@gmail.com)) Merav Antman Passig ([meravpassig@gmail.com](mailto:meravpassig@gmail.com)), Orit Shefi ([orit.shefi@biu.ac.il](mailto:orit.shefi@biu.ac.il)) and Aharon Gedanken ([gedanken@biu.ac.il](mailto:gedanken@biu.ac.il))



**Figure S1:** HRSEM images of multiple SH-SY5Y cells



**Figure S2:** The growth direction of the SH-SY5Y cells on AgNLs. The growth direction of the SH-SY5Y was measured on different thicknesses of AgNLs (300nm and 500nm) and on Gold nanolines.