

Supplementary materials:

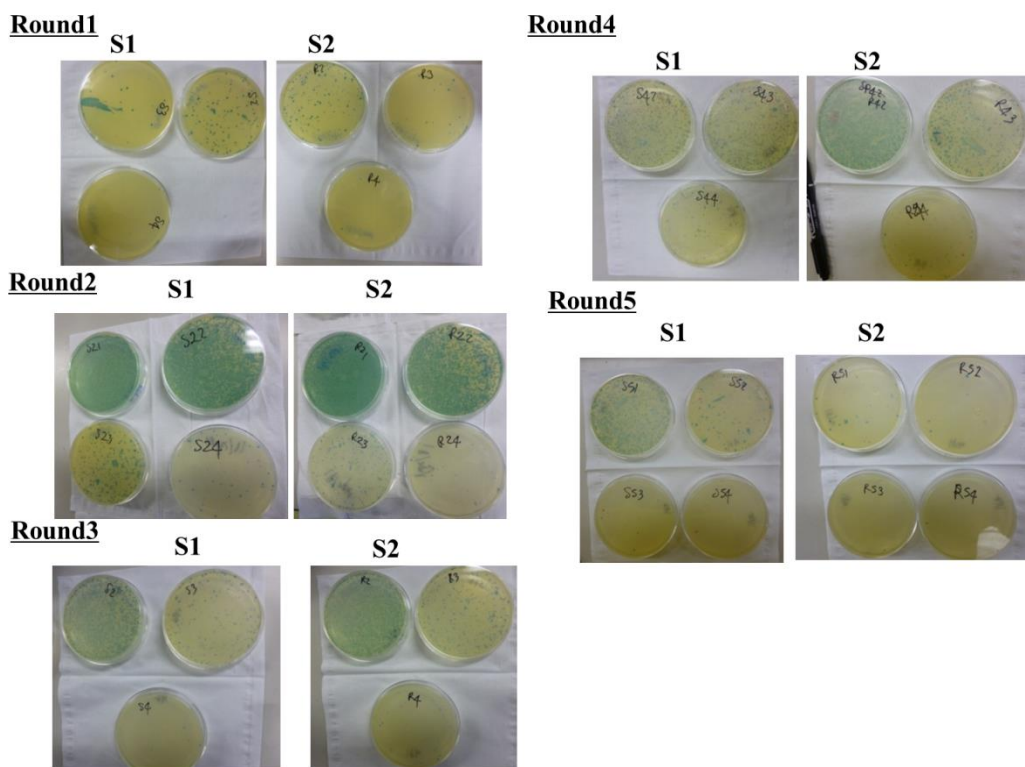


Fig. S1 phage clones growing dish images used to titer the sub-library

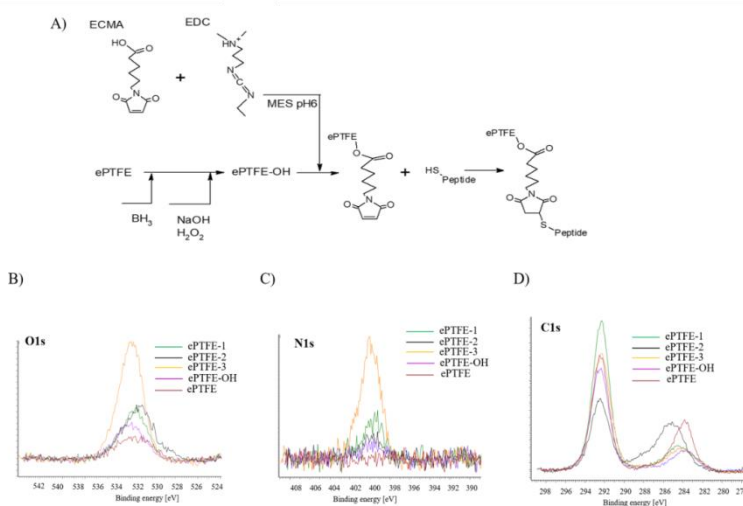


Fig. S2 (A) Schematic of the chemical reaction to immobilized peptides on ePTFE surfaces.

XPS spectra: (B) O1s, (C) N 1s and (D) C 1s, respectively

Percent identity of the sequence:      Most common motif:

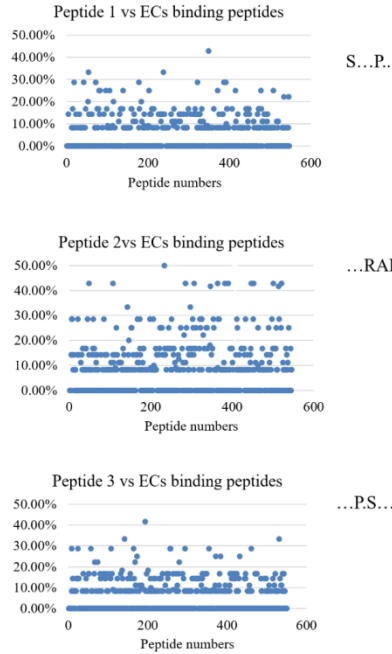


Fig S3 Percent identity of the sequences. On the right side, the most common motif are reported. Alignment of the individual sequences generated by the motif search program MView, the results are in supplementary materials as 3 pdf files. N=600.

| Your Query Peptide | Similar Peptide in MimoDB        |  |
|--------------------|----------------------------------|--|
| SFKIPYHYDSGQ       | HTNTNFKLPLHY in mimoset: 1260    | Anti-HIV1 plasma IgG, PMID: 20637241   |
| TIPRAPSPANTY       | No hits found!                   |  |
| NRPDSAQFWLHH       | NRPDSAQFWLHH in mimoset: 3061    | Recombinant human prostate-specific membrane antigen (PSMA) PMID: 27582001   |
|                    | NRPDSAQFWLHH in mimoset: 3060    | Recombinant human prostate-specific membrane antigen (PSMAPMID: 27582001     |
|                    | NRPDSAQFWLHH in mimoset: 2799    | 9-fluorenylmethoxycarbonyl-threonine and leucine-methyl ester PMID: 25343575 |
|                    | NRPDSAQFWLHH in mimoset: 2791    | Vaccinia virus strain NYCBOH PMID: 25311190                                  |
|                    | NRPDSAQFWLHH in mimoset: 2463    | Human glioblastoma cell line A172 PMID: 24604160                             |
|                    | NRPDSAQFWLHH in mimoset: 2427    | Receptor tyrosine-protein kinase erbB-2 PMID: 24759178                       |
|                    | NRPDSAQFWLHH in mimoset: 2299    | Protein-glutamine gamma-glutamyltransferase Z PMID: 23876241                 |
|                    | NRPDSAQFWLHH in mimoset: 2288    | Listeria monocytogenes serotype 4b PMID: 24040227                            |
|                    | NRPDSAQFWLHH in mimoset: 2214    | Gamma-irradiated Salmonella spp. PMID: 23551658                              |
|                    | LTTEPDTTKFWPAPS in mimoset: 1786 | Anti-IgE polyclonal antibody IgG PMID: 10848928                              |
| REDV               | HSPQYVWHHRG in mimoset: 2954     | Beta-lactamase 2 (EC:3.5.2.6) PMID: 26521981                                 |
|                    | No hits found!                   |  |

Fig.S4 MimoDB search results

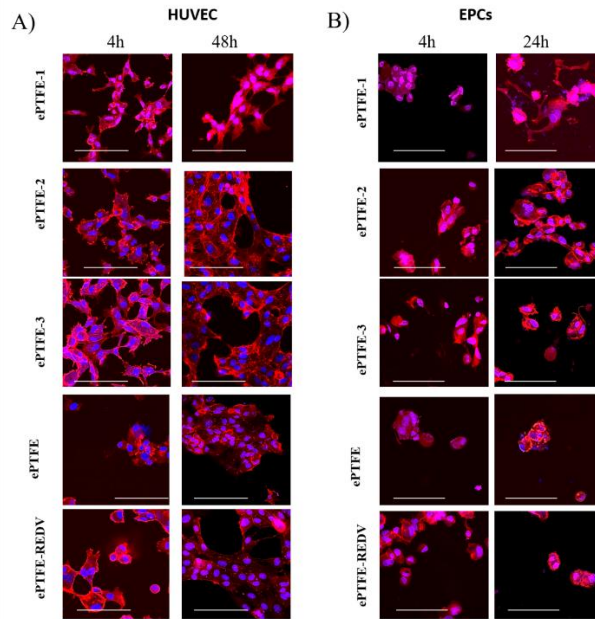


Fig S5. Representative epifluorescence images at higher magnification of (A) HUVEC and (B) EPCs. Bar 100  $\mu$ m. Fluorescently labelled actin is visualized in red and nuclei in blue.

Supplementary pdf files: Of the 600 numbers of sequences that were examined by Mview software and the results are reported in 3 pdf files, as following:

1. Comparison with peptide1: Consensus with peptide 1.pdf
2. Comparison with peptide2: Consensus with peptide 2.pdf
3. Comparison with peptide3: Consensus with peptide 3.pdf
4. Tab.S1: List of peptide sequences analysed in this paper.