

## Electronic Supporting Information

# **Photostable Cationic Fluorophore for Long-Term Bioimaging**

*Lei Wang<sup>a</sup>, Qi Xia<sup>d</sup>, Meirong Hou<sup>c</sup>, Chenggong Yan<sup>c</sup>, Yikai Xu<sup>c</sup>, Jinqing Qu<sup>a\*</sup>,  
Ruiyuan Liu<sup>b,d\*</sup>*

<sup>a</sup> School of Chemistry and Chemical Engineering, South China University of Technology, Guangzhou 510640, P.R.China.

<sup>b</sup> School of Biomedical Engineering, Southern Medical University, Guangzhou 510515, P.R. China.

<sup>c</sup> Medical Imaging Center, Nanfang Hospital, Southern Medical University, Guangzhou, 510515, P.R. China

<sup>d</sup> School of Pharmaceutical Sciences, Southern Medical University, Guangzhou 510515, P.R. China.

Figures and Captions:

**Figure S1.**  $^1\text{H}$  NMR spectrum of **PPB** in  $\text{DMSO-}d_6$ .

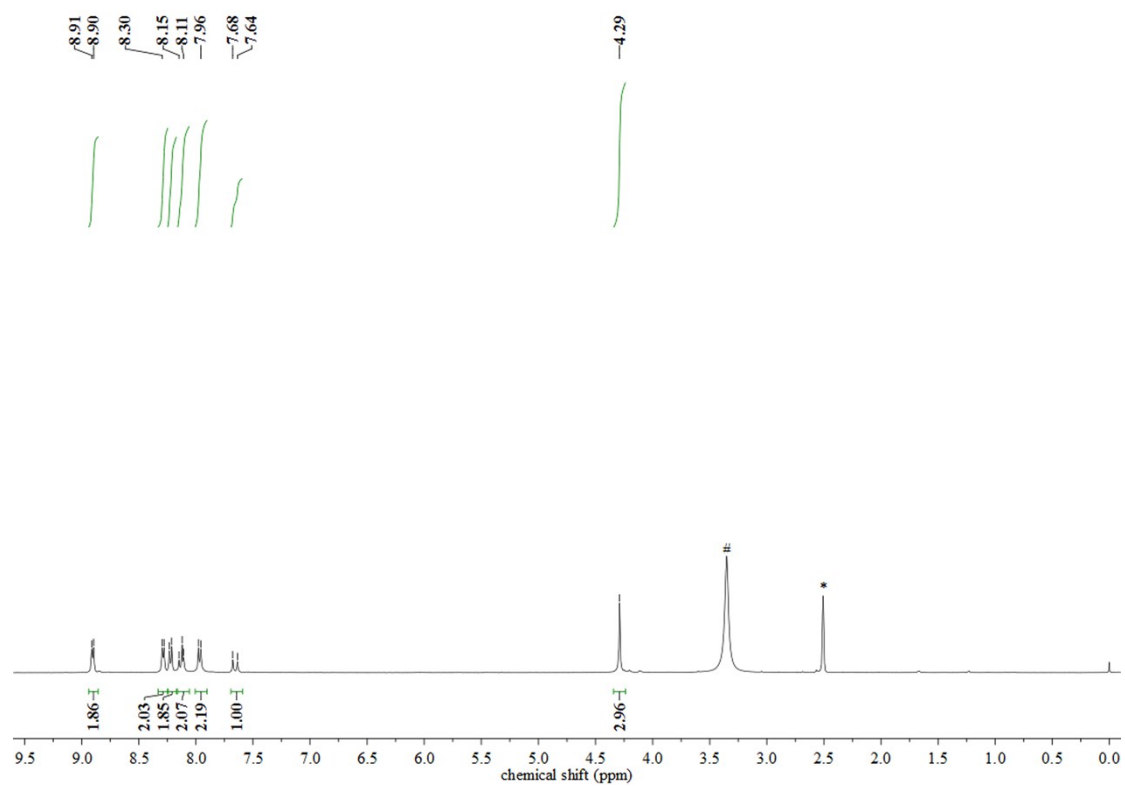
**Figure S2.**  $^{13}\text{C}$  NMR spectrum of **PPB** in  $\text{DMSO-}d_6$ .

**Figure S3.** IR spectrum of **PPB**.

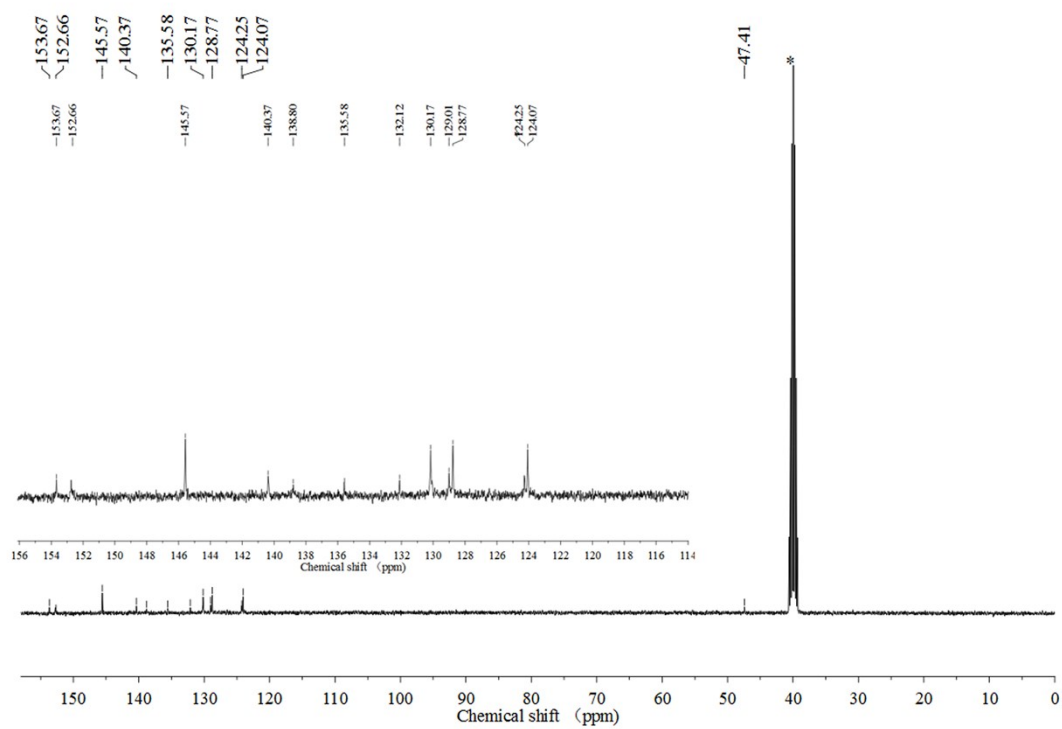
**Figure S4.** ESI-MS spectrum of **PPB**.

**Figure S5.** Molecular orbital amplitude plot of HOMO and LUMO energy level of **PPB** calculated by B3LYP/6-31G (d) basis set.

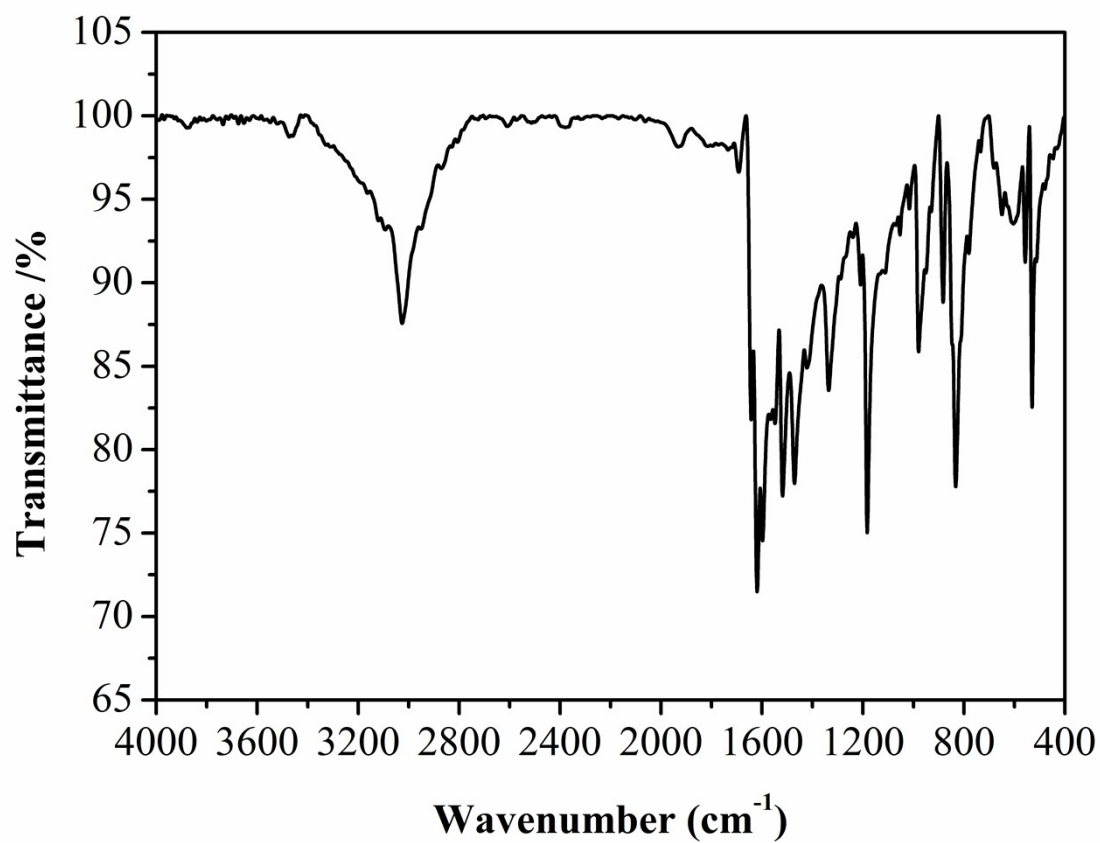
**Figure S6.** Metabolic viability of HeLa cells after incubation with **PPB** at different concentrations.



**Figure S1.**  $^1\text{H}$  NMR spectrum of **PPB** in  $\text{DMSO}-d_6$



**Figure S2.**  $^{13}\text{C}$  NMR spectrum of **PPB** in  $\text{DMSO-}d_6$



**Figure S3.** IR spectrum of PPB

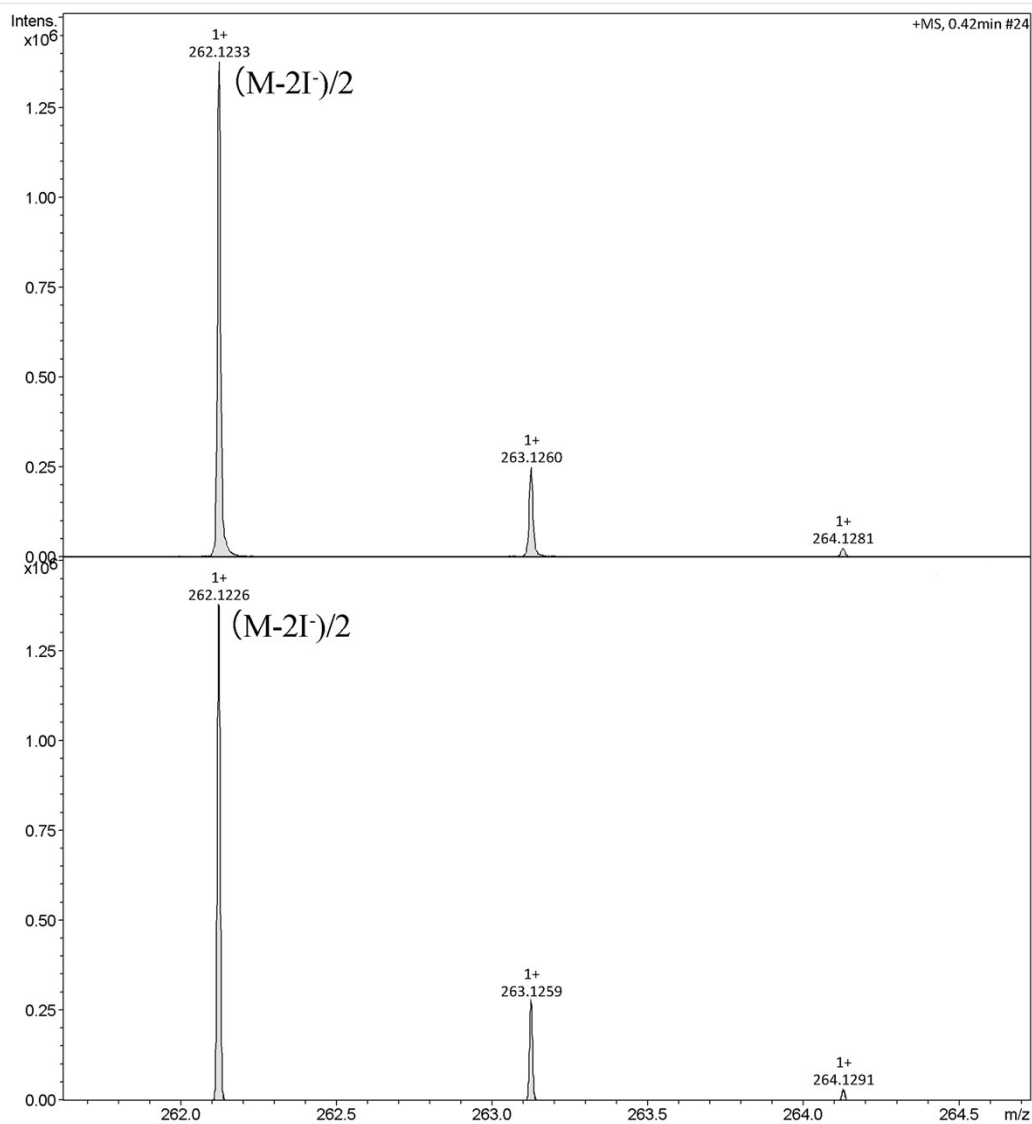
## Generic Display Report

### Analysis Info

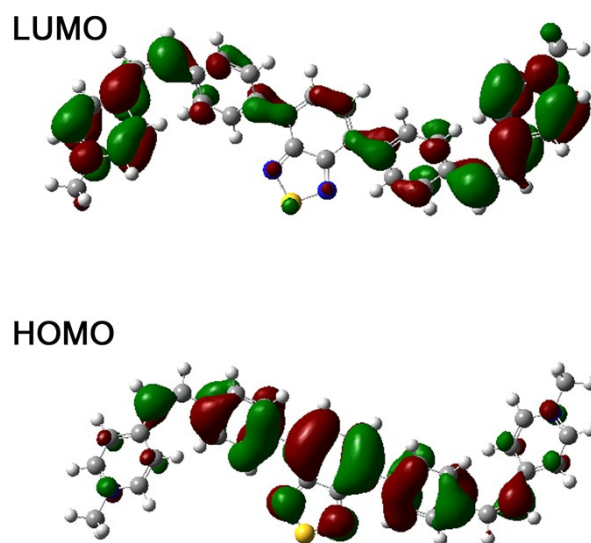
Analysis Name D:\Data\201612\16121201\16121201-2\_P1-A-2\_01\_16001.d  
Method esi\_pos\_50-1000\_with calibration\_for 1min.m  
Sample Name 16121201-2  
Comment

Acquisition Date 12/13/2016 3:13:28 PM

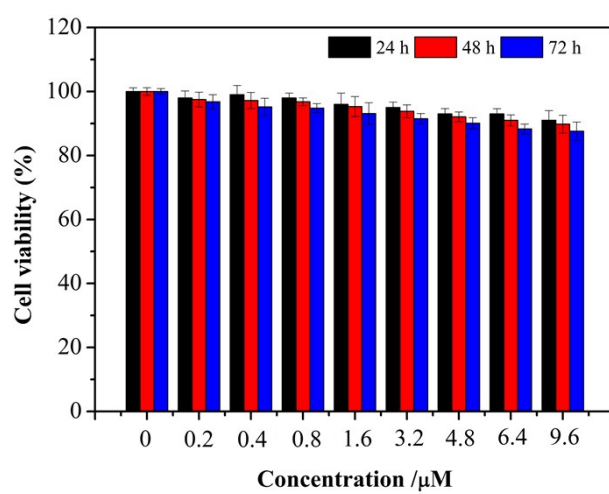
Operator HSJ  
Instrument maXis impact



**Figure S4.** ESI-MS spectrum of PPB



**Figure S5.** Molecular orbital amplitude plot of HOMO and LUMO energy level of **PPB** calculated by B3LYP/6-31G (d) basis set.



**Figure S6.** Metabolic viability of HeLa cells after incubation with **PPB** at different concentrations for 24 h, 48 h and 72 h.