

## Supporting Information

### Construction of High Surface Potential Polypyrrole Nanorods with Enhanced Antibacterial Properties

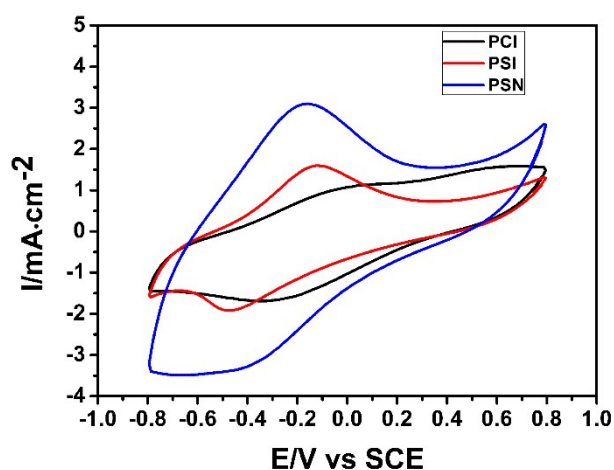


Figure S1. Cyclic voltammetry of PCI, PSI and PSN in PBS (pH 6.8) containing NaCl (0.1 M).

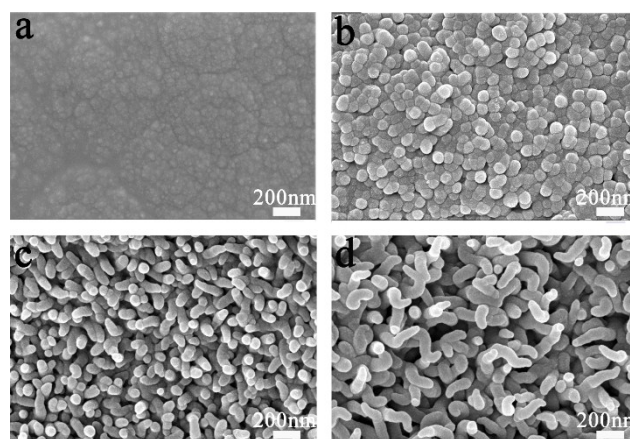


Figure S2. FE-SEM images of nanostructured PPy/SSA coatings obtained after different electropolymerization times: (a) 30 s, (b) 1 min, (c) 5 min, and (d) 10 min. These results suggest that the PPy/SSA nanorod undergoes a growth process of tightly packed nanoparticle to aligned PPy/SSA nanorod.

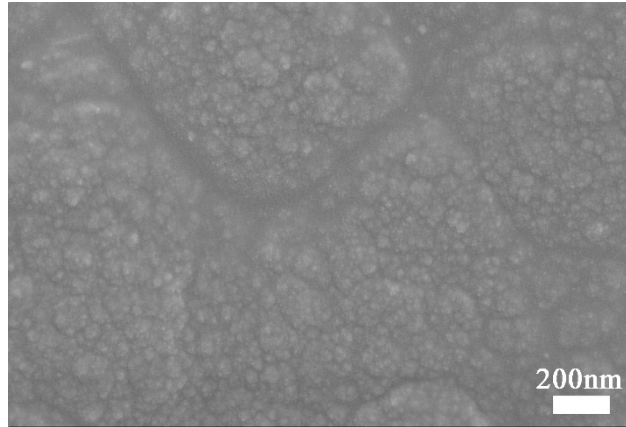


Figure S3. FE-SEM images of irregular PPy/Cl film.

Table S1. XPS analysis of the surface atomic composition of the PSN sample.

Substratum	C (%)	N (%)	O (%)	S (%)
PSN	65.43	10.08	22.39	2.11