

Supplemental Information

Studies of spin related processes in fullerene C₆₀ devices

H. L. Liu, J. Y. Wang, M. Groesbeck, X. Pan, C. Zhang and Z. V. Vardeny*

Department of Physics & Astronomy, University of Utah, Salt Lake City, Utah 84112, USA

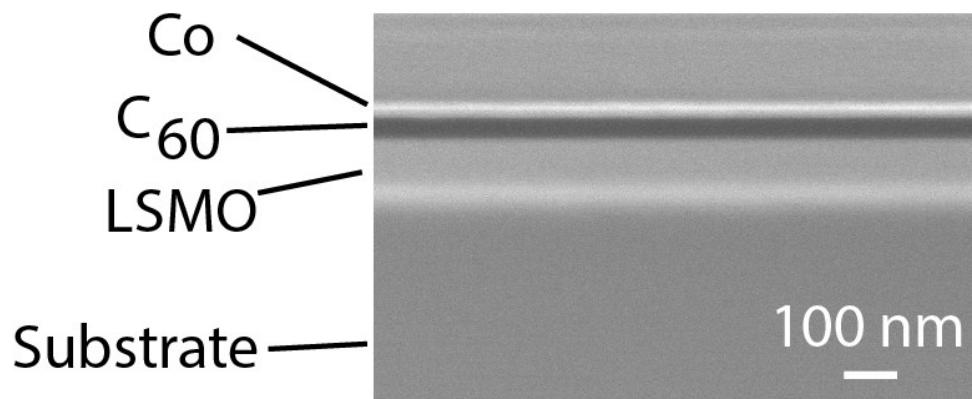


Fig. S1 Cross-section view SEM image of the C₆₀-based spin valve device that shows the different layers, as denoted.

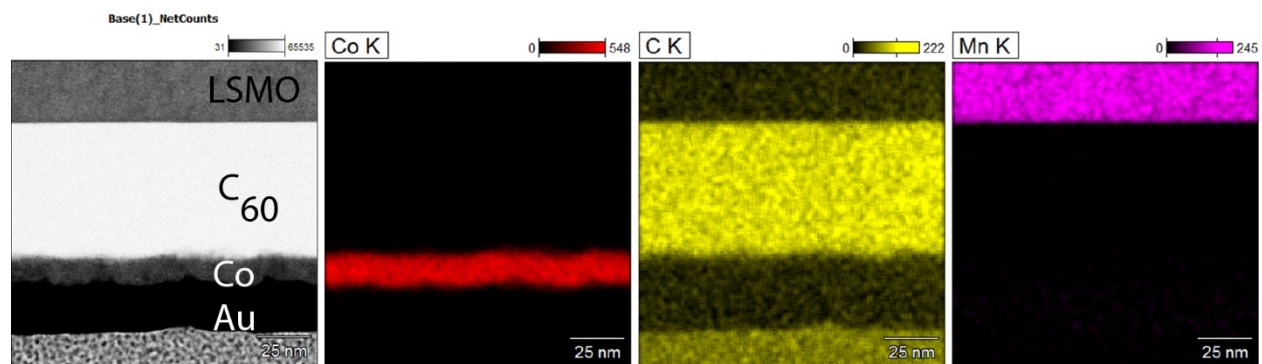


Fig. S2 False color of the energy dispersive spectroscopy for elemental analysis in C₆₀ based spin valve device, as denoted.