

Supplementary Information

Paper supported long-term 3D liver co-culture model for the assessment of hepatotoxic drugs

Yaqing Wang^{a,b}, Wentao Su^a, Li Wang^a, Lei Jiang^a, Yang Liu^{a,b}, Lijian Hui^{b,c} and
Jianhua Qin^{a,b*}

^a Division of Biotechnology, Dalian Institute of Chemical Physics, Chinese Academy of Sciences, Dalian 116023, China.

^b University of Chinese Academy of Sciences, Beijing 100049, China.

^c Institute of Biochemistry and Cell Biology, Shanghai Institutes for Biological Sciences, CAS, Shanghai 200031, China.

*Correspondence: Jianhua Qin, Dalian Institute of Chemical Physics, Chinese Academy of Sciences, 457 Zhongshan Road, Dalian 116023, China. E-mail: jhqin@dicp.ac.cn. Fax: 86-411-84379059

The authors have no conflicts of interest to declare.

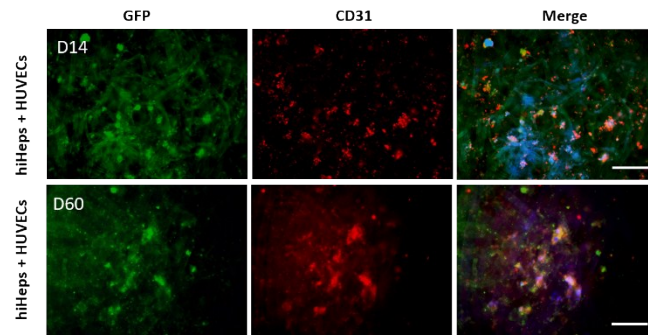


Figure S1. Identification of hiHeps and HUVECs during the course of co-culture on paper scaffold. Staining of a HUVECs marker (CD31) in liver co-cultures on paper scaffold at day 14 and day 60 by immunofluorescence assays. The green color represents the expression of GFP proteins in hiHeps. Scale bar, 200 μm .