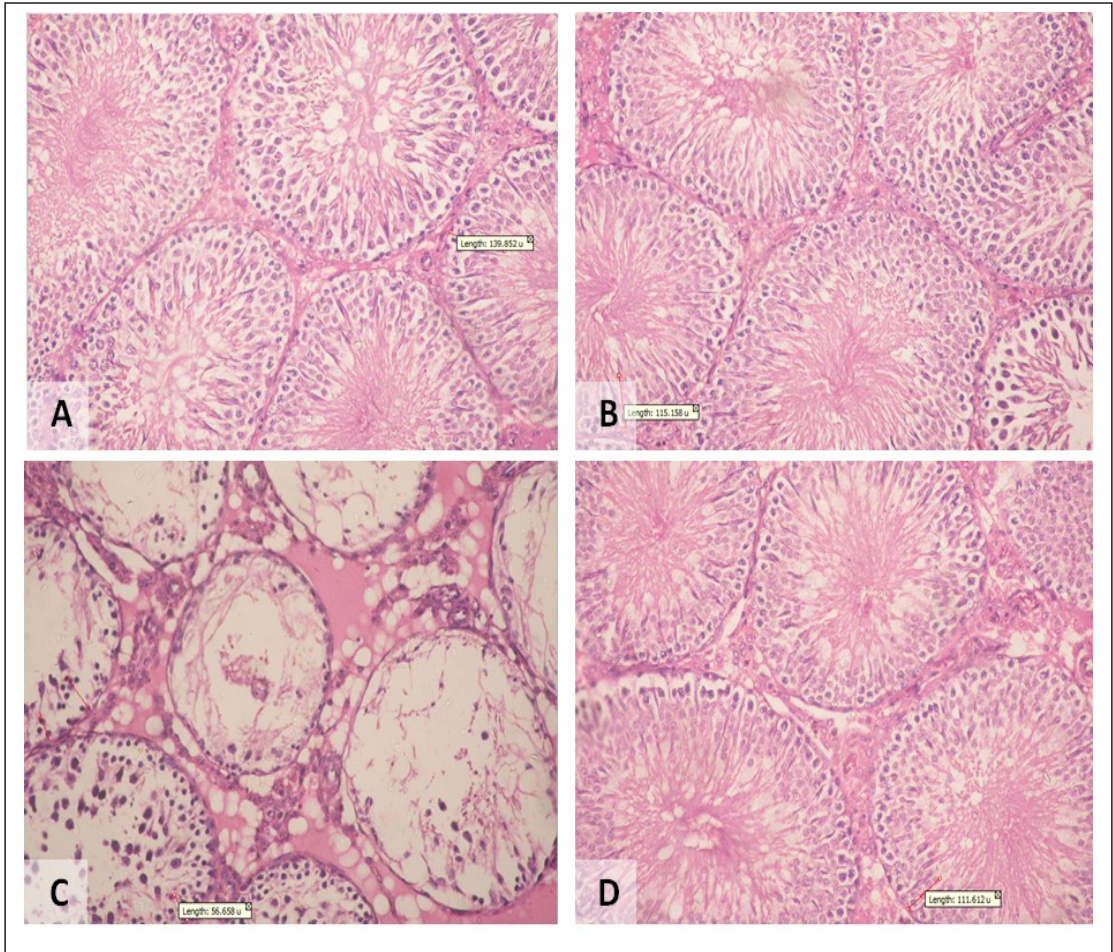


Supplementary Figure 1. Photomicrographs of sperms of adult male albino rats. (A) Normal sperm, (B) double headed sperm, (C) multiple detached heads and (D) coiled sperm tail. Nigrosin & Eosin. (Total magnification = x400; Scale bars=50μm.)



Supplementary Figure 2. Print screen of Digimizer to measure the height of germinal epithelium. (A) Control, (B) folic acid, (C) methomyl and (D) methomyl and folic acid treated.