

Supplementary Information

Towards innovation in paper dating: a MicroNIR analytical platform and chemometrics

Roberta Risoluti^{a*}, Stefano Materazzi^a, Federica Tau^a, Amalia Russo^b, Francesco Saverio Romolo^c

^a Department of Chemistry – “Sapienza” University of Rome p.le A.Moro 5, 00185 Rome Italy

^b “Archivist , Bibliography and librarianship” and “Diagnostic lab and Book Conservation”, “Suor Orsola Benincasa”
University of Naples, Convento di S. Caterina da Siena, Via S. Caterina da Siena 37, Naples, Italy

^c Section of Legal Medicine, “Sapienza” University of Rome, p.le A.Moro 5, 00185 Rome Italy

*** Corresponding author:** Roberta Risoluti, Department of Chemistry, Sapienza - University of Rome, Piazzale Aldo Moro 5, 00185 Rome, Italy; Tel +390649913616
fax: +390649387137
e-mail address: roberta.risoluti@uniroma1.it

Keywords: MicroNIR, chemometrics, ancient paper, dating

Table of Contents

Figure S1. PC 1 loadings plot of paper produced in 1700, 1800 and 1900. The graph shows the influence of variables 1350-1480 nm on the location of samples in the scores plot according to PC 1.

Figure S2. PC 4 loadings plot of paper produced in 1700, 1800 and 1900. The graph shows the influence of variables on the location of samples in the scores plot according to PC 4. A negative correlation in the range 1350-1440 nm and a positive correlation in the range 1440-1550 nm were found to be responsible for the discrimination between 1700 and 1800.

Table S1. List of all the analysed specimens, divided into books and sheets.

Figure S1

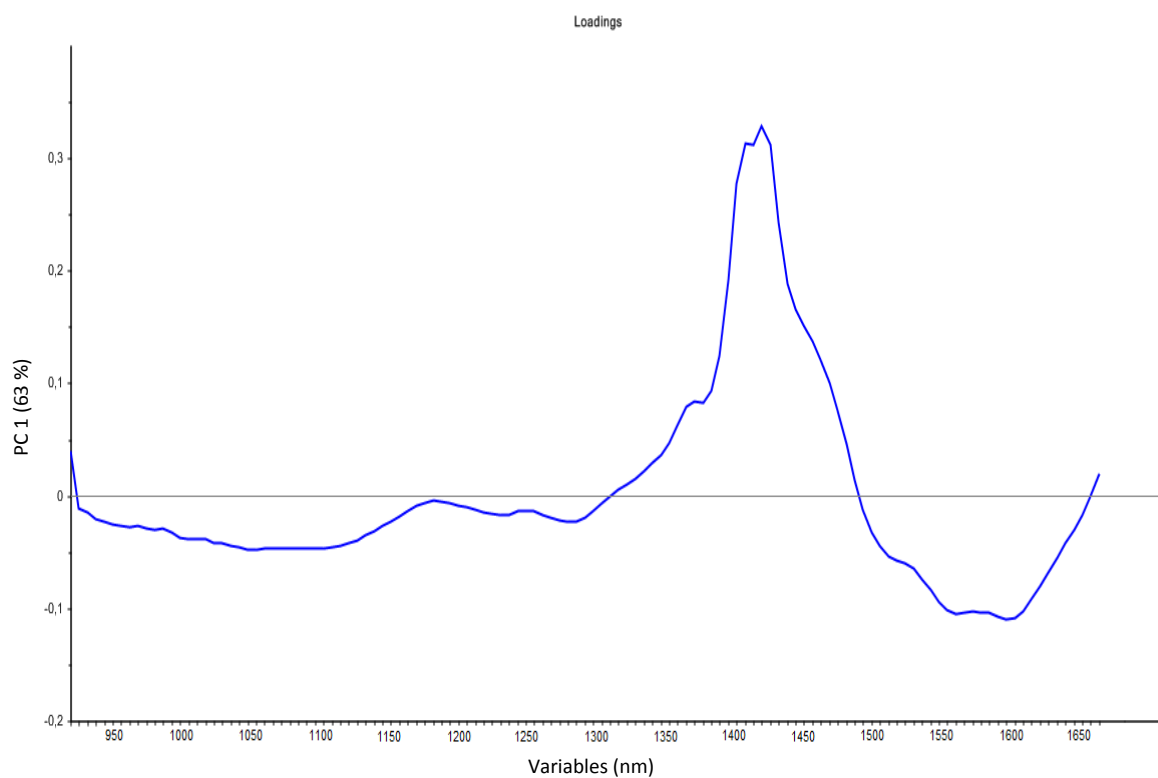


Figure S1. PC 1 loadings plot of paper produced in 1700, 1800 and 1900. The graph shows the influence of the variables 1300-1480 nm on the location of samples in the scores plot according to PC 1.

Figure S2

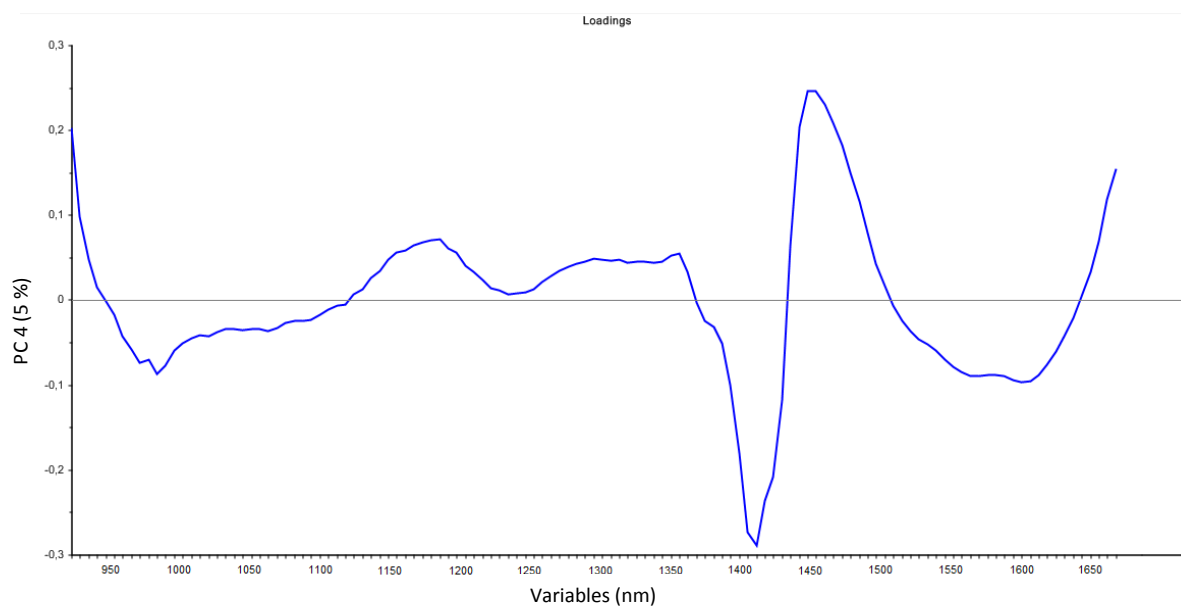


Figure S2. PC 4 loadings plot of paper produced in 1700, 1800 and 1900. The graph shows the influence of variables on the location of samples in the scores plot according to PC 4. A negative correlation in the range 1300-1440 nm and a positive correlation in the range 1440-1600 nm were found to be responsible for the discrimination between 1700 and 1800.

Table S1

Table S1 List of all the analysed specimens, divided into books and sheets.

Sample	Date (year)	n. specimen
Book	1704	1
Book	1772	1
Book	1779	2
Book	1783	4
Book	1816	5
Book	1819	1
Book	1822	2
Book	1828	7
Book	1829	1
Book	1835	1
Book	1837	1
Book	1838	1
Book	1840	2
Book	1846	7
Book	1847	1
Book	1855	1
Book	1871	1
Book	1872	1
Book	1876	2
Book	1879	1
Book	1893	3
Book	1896	1
Book	1899	1
Book	1900	2
Book	1901	1
Book	1902	5
Book	1903	4
Book	1904	2
Book	1905	2
Book	1906	2
Book	1907	2
Book	1908	3
Book	1909	1
Book	1910	2
Book	1911	2
Book	1912	2
Book	1913	2
Book	1914	1
Book	1921	1
Book	1922	1
Book	1924	1
Book	1925	1
Book	1927	2
Book	1928	1
Book	1929	1
Book	1937	1

Book	1948	1
Book	1949	1
Book	1951	1
Book	1952	2
Sheet	1500	4
Sheet	1600	4
Sheet	1700	6
Sheet	1800	3
Sheet	1834	1
Sheet	1837	1
Sheet	1862	1
Sheet	1882	1
Sheet	1918	1
Sheet	1921	1
Sheet	1922	1
Sheet	1926	3
Sheet	1927	2
Sheet	1930	1
Sheet	1932	1
Sheet	1934	1
Sheet	1937	1
Sheet	1941	1
Sheet	1942	1
Sheet	1953	1
Sheet	1978	1
Sheet	1981	1
Sheet	1982	1
Sheet	1984	1
Sheet	1987	1
Sheet	1989	1
Sheet	1991	1
Sheet	1992	1
Sheet	1996	1
Sheet	2000	1
Sheet	2009	1
Sheet	2016	1
