

## Supplementary Information

### **Adsorption efficiency enhancing of electrospun polycaprolactone nanofibers towards acidic polar drugs through the incorporation of a composite of graphene oxide nanosheets and Al<sup>3+</sup> polyoxocations: A comparative study**

Elham Tahmasebi\*

*Department of Chemistry, Institute for Advanced Studies in Basic Sciences (IASBS), P.O. Box  
45195- 1159, Zanjan, Iran*

---

\*Email-address: Etahmasebi@iasbs.ac.ir

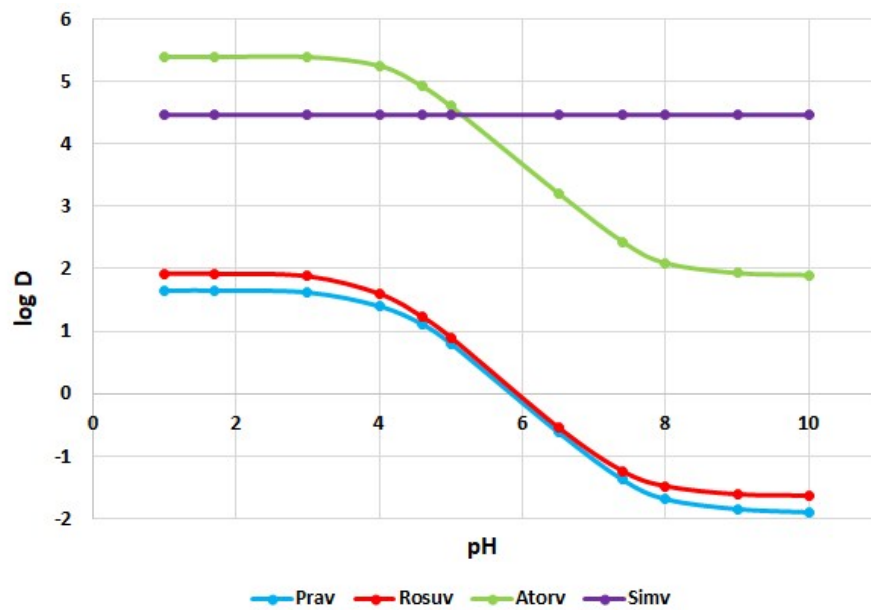


Figure S1. Changes of the Log D values of the drugs at different pHs

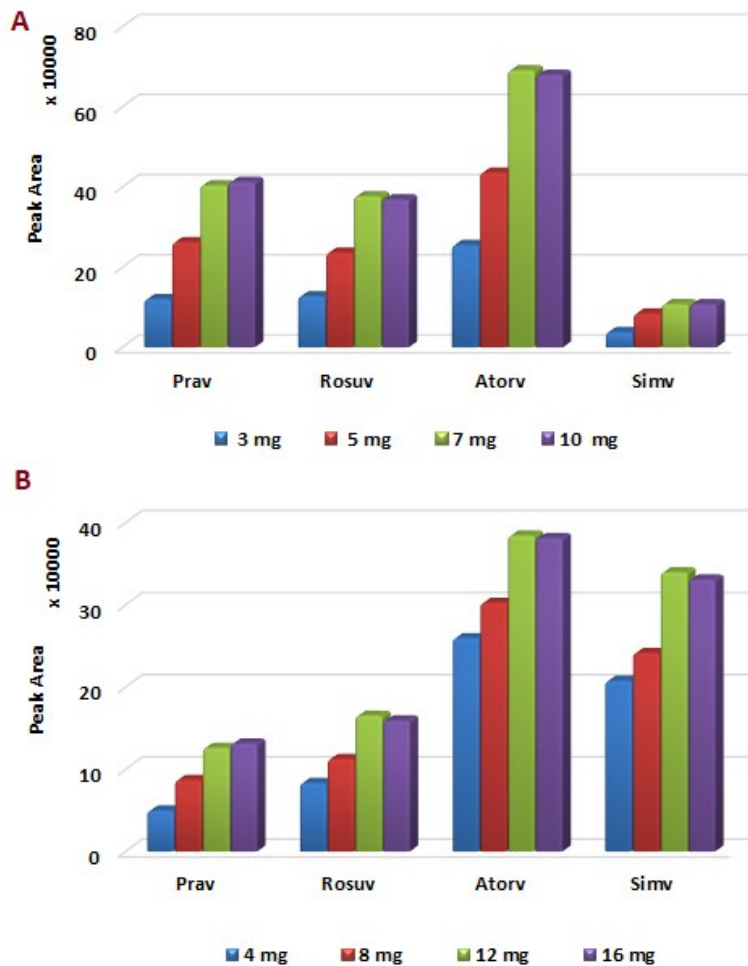


Figure S2. Effect of sorbent amount on extraction efficiency of (a) DSPE and (b) ISPE; Extraction conditions: sample solution, 50 mL of 100  $\mu\text{g L}^{-1}$  target drugs at pH = 5; eluent: 300  $\mu\text{L}$  of methanol-0.2 M phosphate solution (pH = 5) 70:30; extraction time, 10 min; desorption time, 2 min.

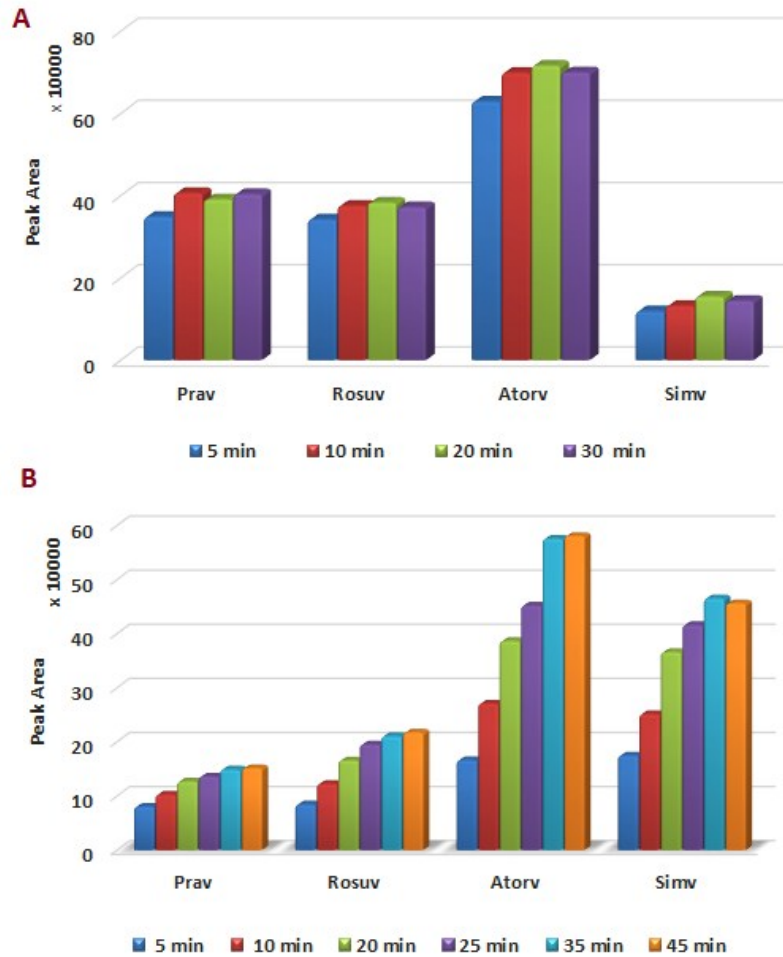


Figure S3. Effect of extraction time on extraction efficiency of (a) DSPE and (b) ISPE; Extraction conditions: sample solution, 50 mL of  $100 \mu\text{g L}^{-1}$  target drugs at pH = 5; 7 mg of GO/Al<sub>30</sub>NC for DSPE and 12 mg of GO/Al<sub>30</sub>NC-PCL nanofibers mat for ISPE; eluent: 300  $\mu\text{L}$  of methanol-0.2 M phosphate solution (pH = 5) 70:30; desorption time, 2 min.

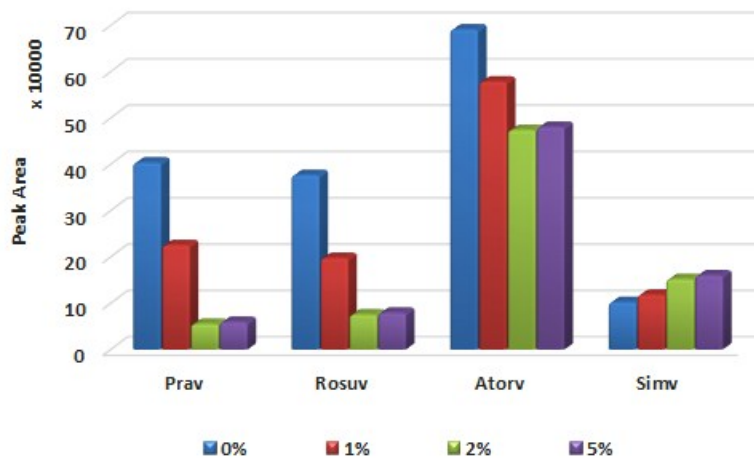


Figure S4. Effect of NaCl% (w/v) on extraction efficiency of DSPE; Extraction conditions: sample solution, 50 mL of  $100 \mu\text{g L}^{-1}$  target drugs at pH = 5; 7 mg of GO/Al<sub>30</sub>NC; eluent: 200  $\mu\text{L}$  of methanol-0.2 M phosphate solution (pH = 5) 70:30; extraction time, 10 min; desorption time, 5 min.