

## Electronic Supplementary Information

### Selective magnetic mercury (II) ion capturing ligand-doped silica gel for water analysis

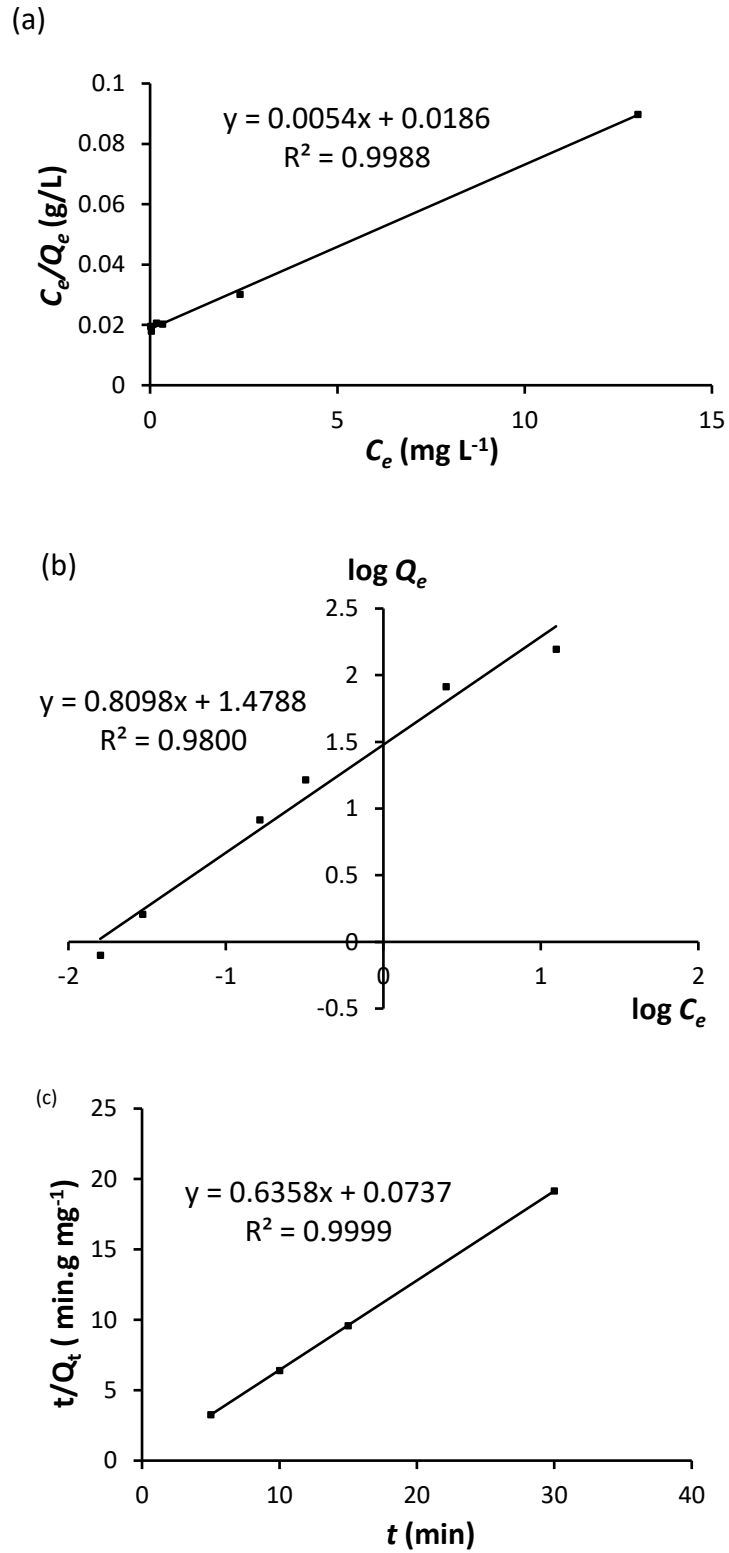
Soo Wei Khor,<sup>a</sup> Yean Kee Lee<sup>a</sup> and Kheng Soo Tay<sup>\*a</sup>

<sup>a</sup>Department of Chemistry, Faculty of Science, University of Malaya, 50603 Kuala Lumpur, Malaysia.

\*E-mail: khengsoo@um.edu.my

**Table S1** Elemental composition of SiO<sub>2</sub>@MNP and ODE@SiO<sub>2</sub>@MNP (determined after exposed to Hg<sup>2+</sup> solution).

Element	Percent (%)	
	SiO <sub>2</sub> @MNP	ODE@SiO <sub>2</sub> @MNP
Iron (Fe)	23.9	9.7
Oxygen (O)	43.3	37.6
Silica (Si)	32.8	13.0
Carbon (C)	-	11.1
Nitrogen (N)	-	1.8
Sulfur (S)	-	1.5
Hg <sup>2+</sup>	Not detected	25.3



**Fig. S1** (a) Langmuir's isotherm plot, (b) Freundlich adsorption isotherm plot, (c) Pseudo-second order model plot