

Supporting information

A highly selective “turn-on” fluorescent sensor for zinc ion based on a pyrazoline derivative and its imaging in live cells

Yun-Shang Yang^a, Chun-Mei Ma^a, Ying-Peng Zhang^{a*}, Hua-Qing Xue^a, Jia-Xi Ru^b, Xiao-Yu Liu^a, Hui-Chen Guo^{a,b*}

^aSchool of Petrochemical Engineering, Lanzhou University of Technology, Lanzhou 730050, China

^bState Key Laboratory of Veterinary Etiological Biology and Key Laboratory of Animal Virology of Ministry of Agriculture, Lanzhou Veterinary Research Institute, Chinese Academy of Agricultural Sciences, Lanzhou 730046, China

¹H NMR ¹³C NMR and ESI-MS spectra of products

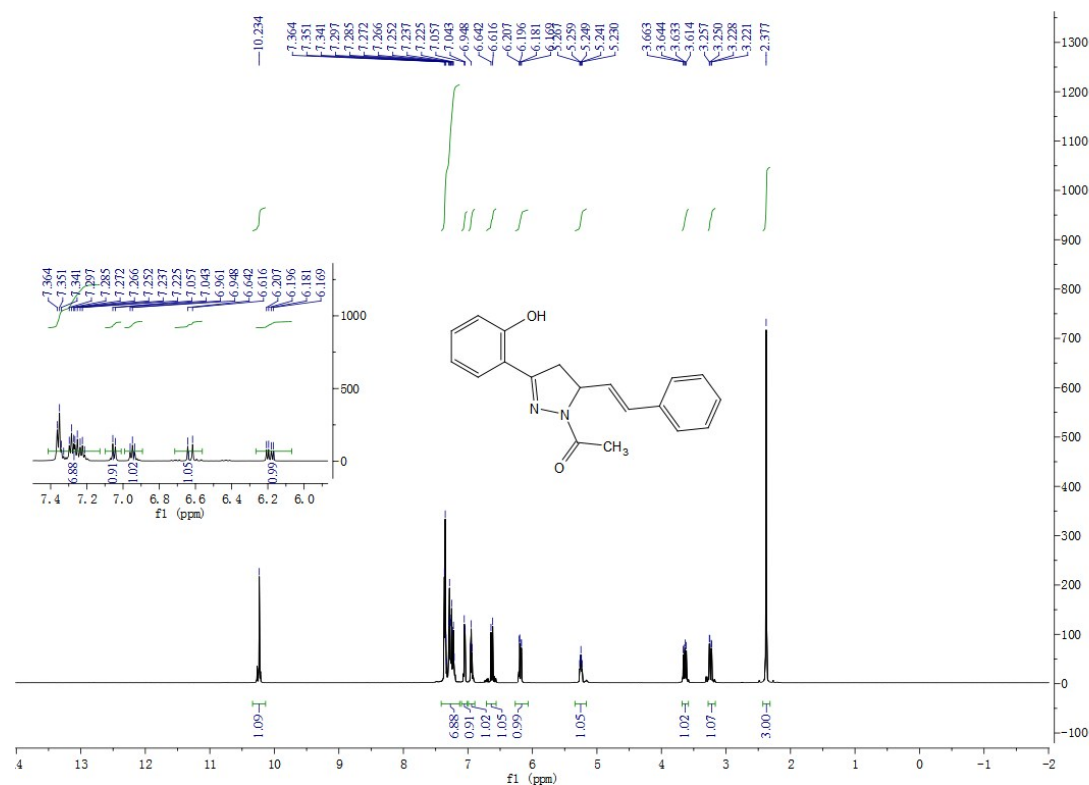


Fig S1.

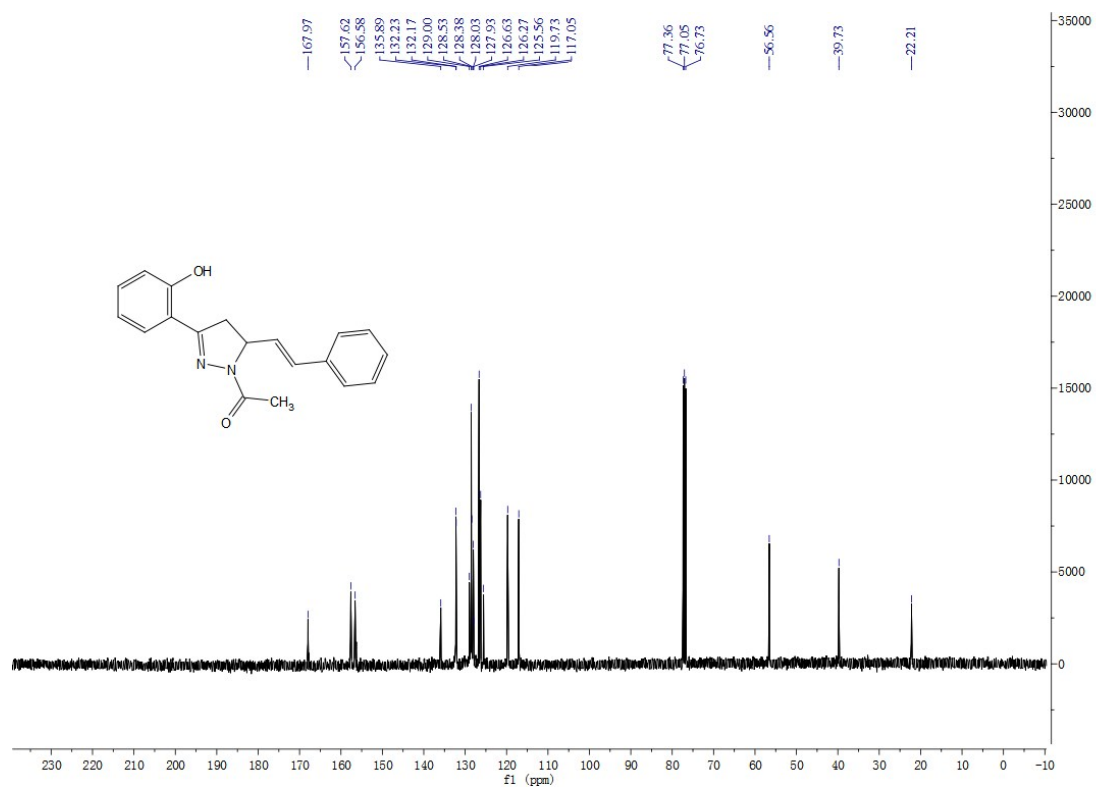


Fig S2.

Generic Display Report

Analysis Info

Analysis Name D:\Data\YANGY\New\XUECHUNHUA171117_3.d
Method NEG_100-1200_For LC.m
Sample Name XUECHUNHUA171117_3
Comment

Acquisition Date 11/17/2017 5:52:16 PM

Operator LZU
Instrument micrOTOF

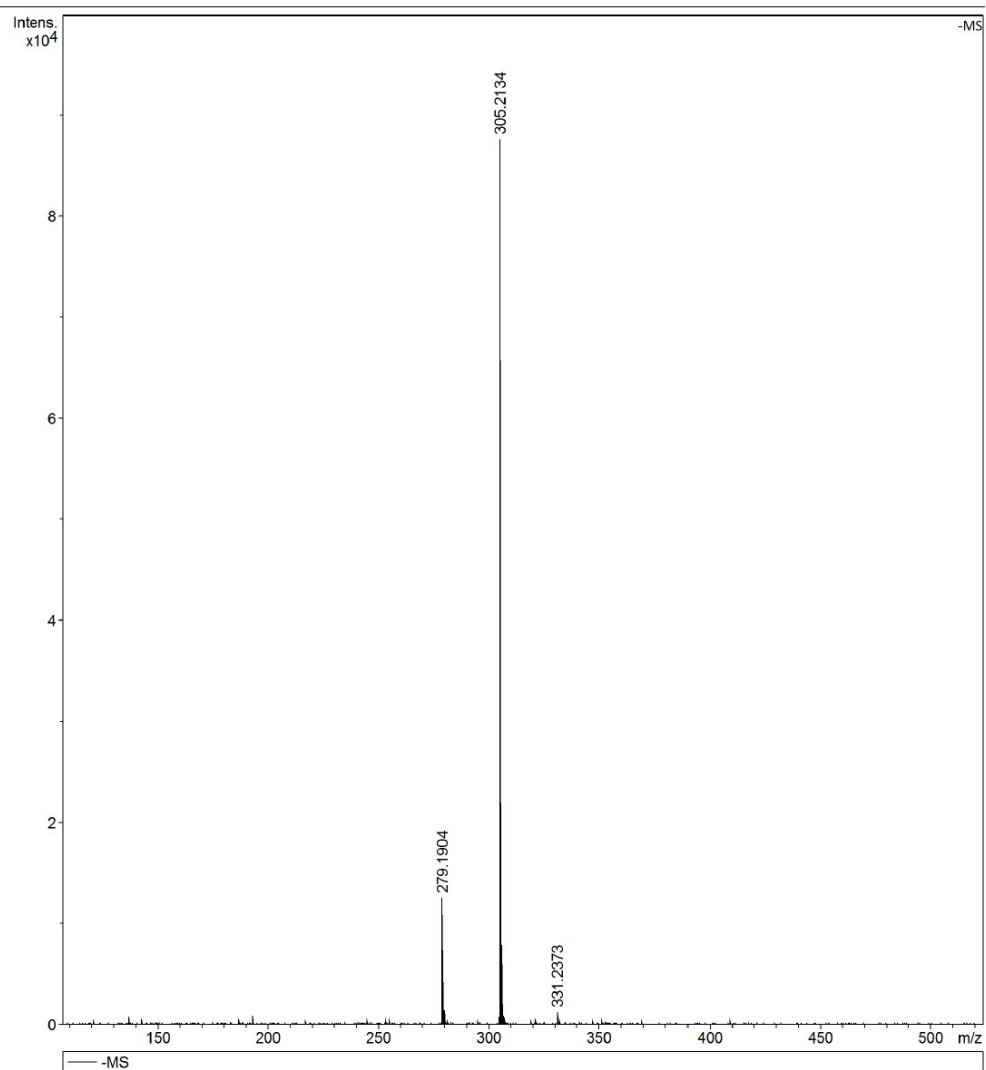


Fig S3.