

Aptameric detection of Quinine in reclaimed wastewater by using a personal glucose meter

Yong Qiu¹, Chunmei Gu^{1,2*}, Bing Li³, Hanchang Shi^{1,4}

¹ State Key Joint Laboratory of Environment Simulation and Pollution Control, School of Environment, Tsinghua University, Beijing 100084, China

² Department of Chemistry, Tsinghua University, Beijing 100084, China

³ School of Energy and Environmental Engineering, University of Beijing Science & Technology, Beijing, 100083, China

⁴ Division of Environment and Energy, Beijing Collaborative Innovation Research Institute, Beijing, 100094, China

Figure S1 Molecular structure of quinine.

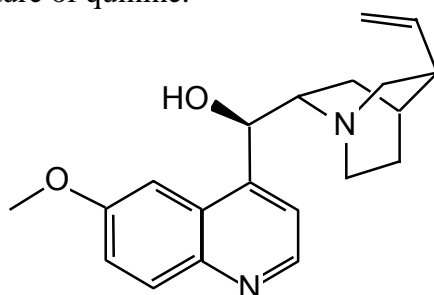


Figure S2 MBs-aptamer-invertase structure. The MBs represent the streptavidin functionalized magnetic beads. Bold letters represent the hybridization zones between aptamer and thiol-DNA. Invertase is linked to the complementary DNA by the reduced thiol group.

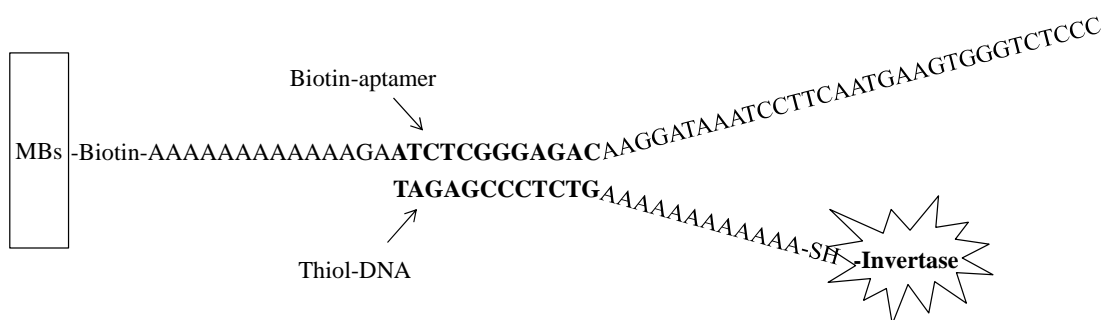


Figure S3 Non-denaturing PAGE (15%) of the thiol-DNA and invertase affinity. Band 1# is the DNA ladder, band 2# is the pure thiol-DNA, band 3# is the mixture of thiol-DNA and the invertase, band 4# is the conjugant of the thiol-DNA and the invertase.

