

Dual Polarity MALDI Imaging Mass Spectrometry Reveals Spatial Lipid Localizations at High-Spatial Resolutions in Rat Small Intestine

Ibrahim Kaya^{1,2}, *Eva Jennische*³, *Stefan Lange*³ and *Per Malmberg*^{2,4*}

¹ Department of Chemistry and Molecular Biology, University of Gothenburg 412 96, Sweden

² The Gothenburg Imaging Mass Spectrometry (Go:IMS) platform, University of Gothenburg and Chalmers University of Technology, Gothenburg 412 96, Sweden

³ Institute of Biomedicine, Gothenburg 413 90, Sweden

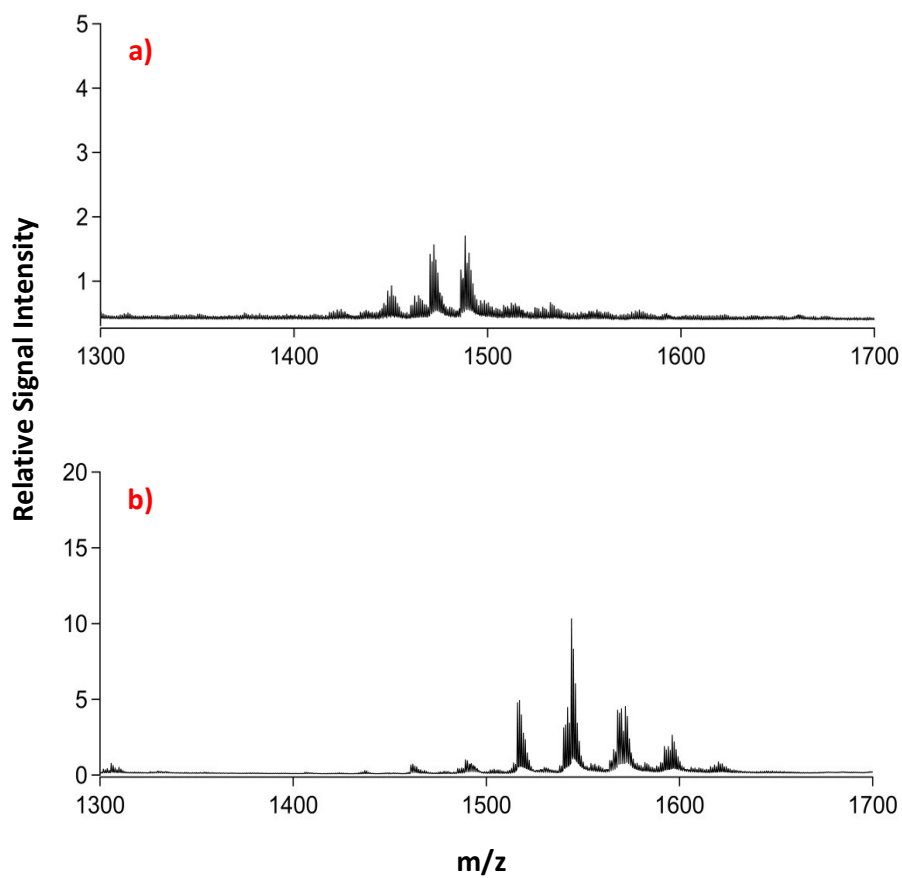
⁴ Department of Chemistry and Chemical Engineering, Chalmers University of Technology, Gothenburg 412 96, Sweden

***Corresponding Author**

Per Malmberg, PhD

Department of Chemistry and Chemical Engineering, Chalmers University of Technology,
Gothenburg 412 96, Sweden

malmper@chalmers.se, tel: +46317728321



Supporting Information Figure S-1: a) Cardiolipins observed in negative ion mode (1300-1700Da) b) phospholipid dimers¹ observed in positive ion mode (1300-1700Da).

(1) Jackson, S. N.; Wang, H.-Y. J.; Woods, A. S.; Ugarov, M.; Egan, T.; Schultz, J. A. *Journal of the American Society for Mass Spectrometry* **2005**, *16*, 133-138.