

Electronic Supplementary Information

Quantification of Estrogens in Infant Formula by Isotope Dilution Liquid Chromatography-tandem Mass Spectrometry

Shuan Liu,^{a, b} Xiaomin Li,^{b,*} Yingchen Zhao,^b Xiong Yin,^{a,*} Qinghe Zhang,^b Xiuqin Li,^b Guangshi Tang^{a,*} and Hongmei Li^b

^a State Key Laboratory of Chemical Resource Engineering, School of Science, Beijing University of Chemical Technology, Beijing 100029, P. R. China

^b Laboratory of Food Safety, Division of Metrology in Chemistry, National Institute of Metrology, China, Beijing 100029, P. R. China.

†Corresponding Authors:

Dr. **X. Li** Tel.: +86-10-64524784; Fax: +86-10-64524783 E-mail: lixm@nim.ac.cn;

Dr. **X. Yin** Tel: +86-10-64433197, Fax: +86-10-64421755 E-mail: yinxiong@mail.buct.edu.cn

Dr. **G. Tang** E-mail: tanggs@mail.buct.edu.cn.

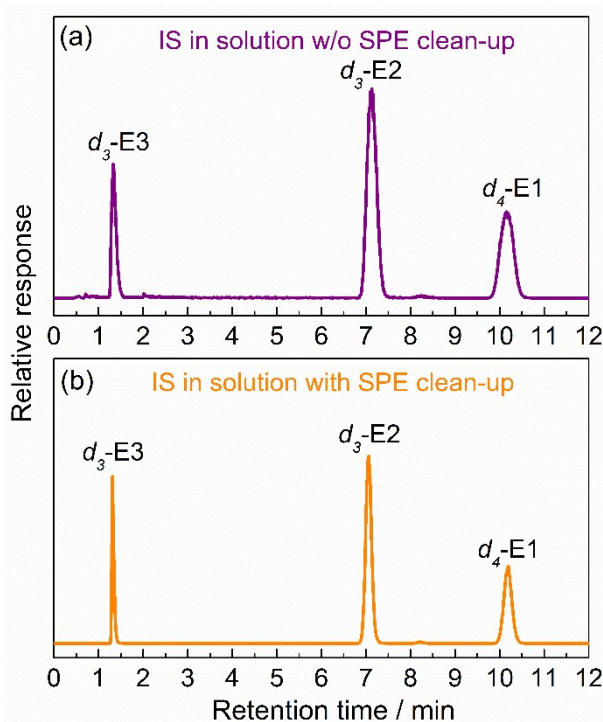


Figure S1. HPLC-MS/MS chromatograms of internal standards (IS) in the solution: (a) spiked sample after extraction step without SPE clean-up; (b) spiked sample with SPE clean-up step.