

**An electrochemical sensor based on Fe₃O₄@PANI
nanocomposites for sensitive detection of Pb²⁺ and Cd²⁺**

Ying Kong ^a, Tingting Wu ^a, Di Wu ^a, Yong Zhang ^b, Yaoguang Wang ^{b*}, Bin Du ^{a, b},
Qin Wei ^b

^a School of Water Conservancy and Environment, University of Jinan, Jinan 250022,
China.

^b Key Laboratory of Interfacial Reaction & Sensing Analysis in Universities of
Shandong, School of Chemistry and Chemical Engineering, University of Jinan, Jinan
250022, China

Corresponding author: Tel. + 15154109298

E-mail address: wangyaoguang9002@163.com

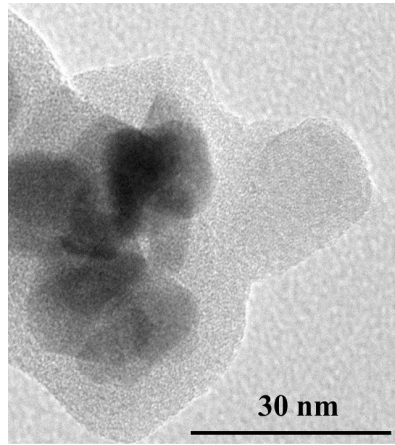


Figure S1. HRTEM image of Fe₃O₄@PANI

Table S1. Detection of Pb²⁺ in real water samples

Samples	Added (nmol·L ⁻¹)	Found (nmol·L ⁻¹)	RSD (%)	Recovery (%)
Tap water	20.0	20.7, 20.4, 19.5, 20.2, 18.7	4.04	99.5
	100.0	101.6, 105.4, 99.2, 98.7, 102.5	2.67	101
Lake water	20.0	21.7, 20.3, 19.8, 21.1, 20.5	3.58	102
	100.0	105.1, 101.7, 107.8, 102.6, 103.7	2.29	104