

SUPPLEMENTARY MATERIAL

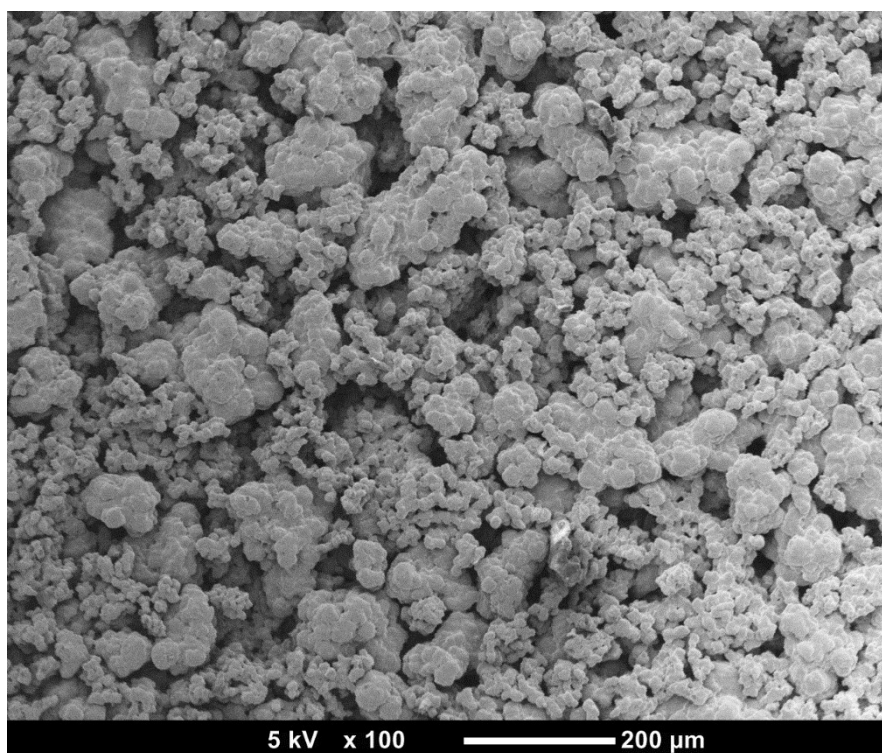


Figure SM1 – Scanning electron microscopic image of the porous polyethylene frits used to support the calcium alginate microparticles in the column.

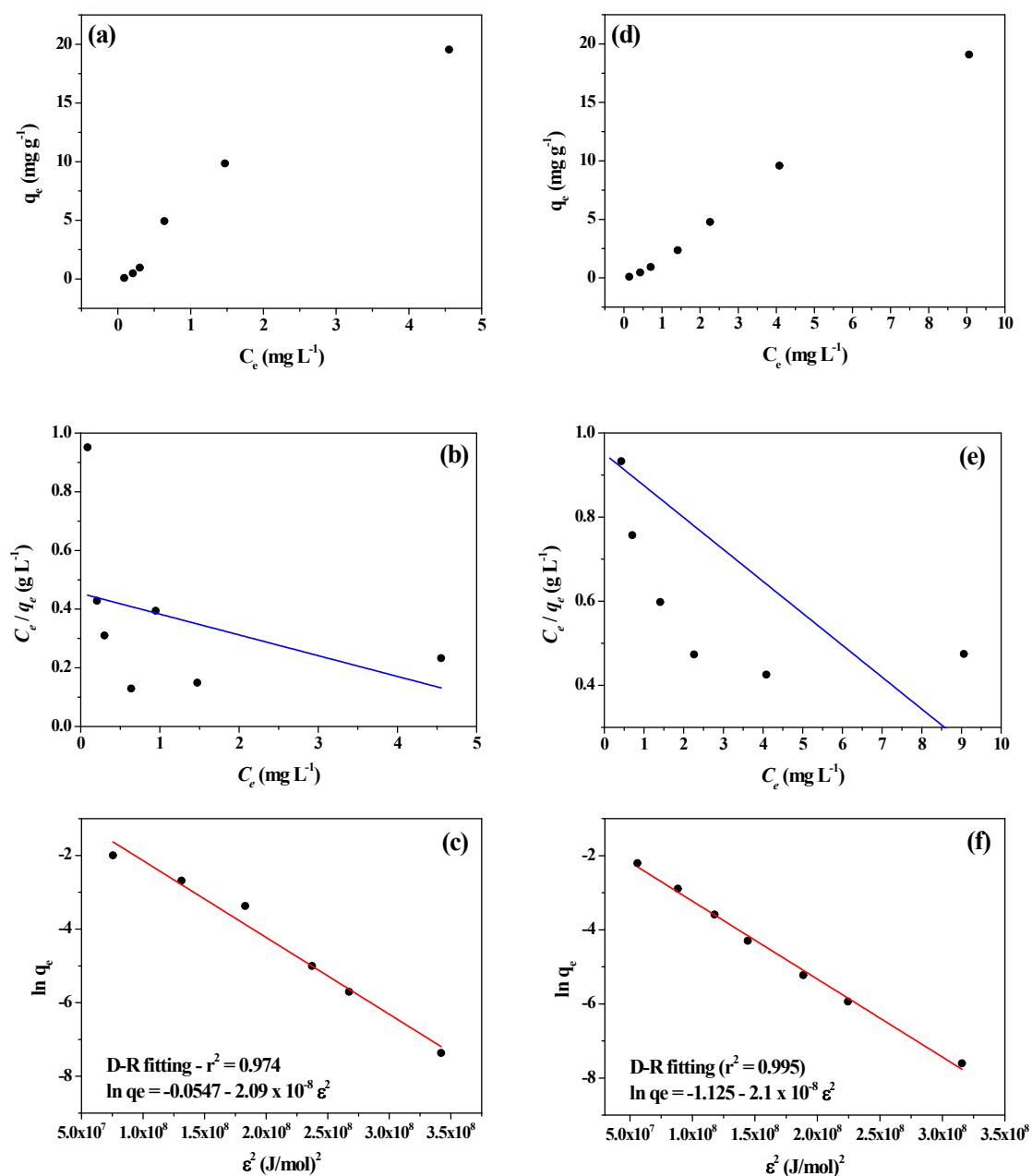


Figure SM2 - Adsorption isotherms of (a) Nd and (d) Yb solutions on particulate CA beads at pH 4, shaking at 200 rpm overnight. Fitting the corresponding experimental data to Langmuir (b,e for Nd, Yb) and Dubinin-Radushkevitch (D-R; c,f for Nd, Yb) adsorption models. D-R fitting parameters: Nd: $q_{\text{max}} = 382,9 \text{ mg g}^{-1}$; $Ea = 15 \text{ kJ mol}^{-1}$; Yb: $q_{\text{max}} = 56 \text{ mg g}^{-1}$; $Ea = 5 \text{ kJ mol}^{-1}$.