

Simultaneous determination of trace Cd^{2+} and Pb^{2+} using GR/L-cysteine/Bi modified screen-printing Electrodes

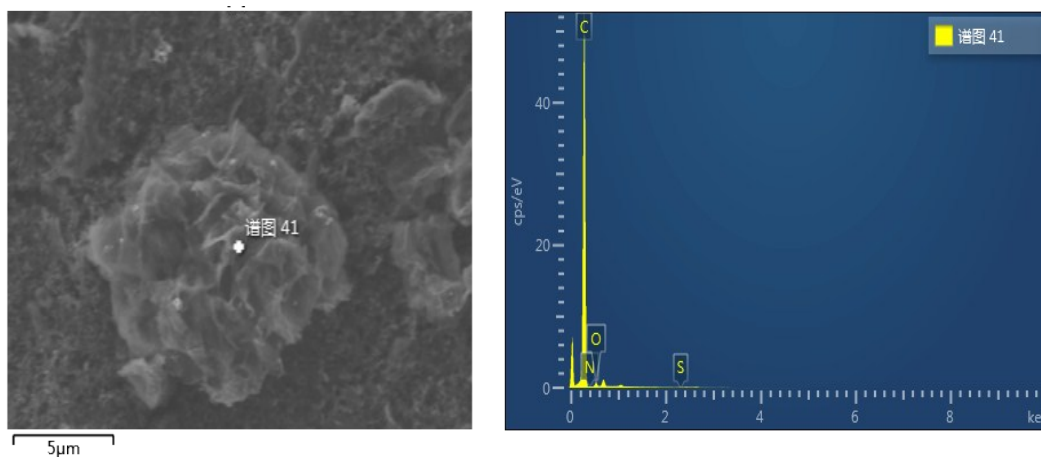


Fig. S1. Spectrum of energy dispersive x-ray (EDX) of GR/L-cys/SPE.

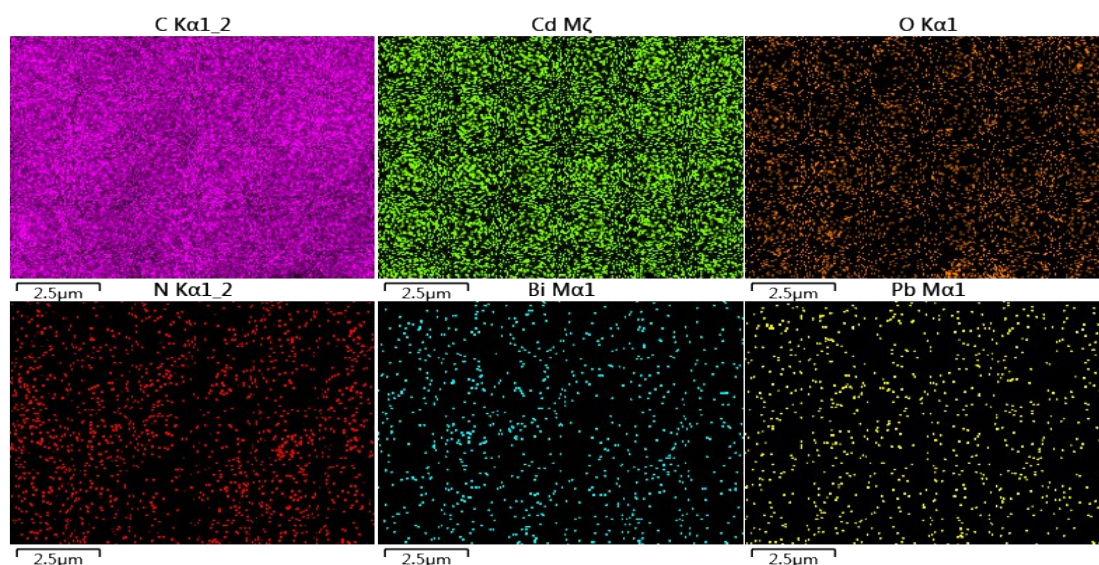


Fig. S2. Corresponding elemental mapping of GR/L-cys/Bi/SPE.