

Appendix A. Supplementary data

**A rapid and naked-eye visible Rhodamine 6G based chemosensor for sensitive
detection of copper (II) ion in aqueous solution †**

Q. Huang^a, Y. T. Chen^a, Y. W. Ren^a, Z. Y. Wang^a, Y. X. Zhu^b, Y. Zhang^{* a}

^aState Key Laboratory of Marine Environmental Science (Xiamen University)

Xiamen 361005, China.

^bDepartment of Chemistry, College of Chemistry and Chemical Engineering, Xiamen

University, Xiamen 361005, China.

†Electronic Supplementary Information (ESI) available. See DOI: 10.1039/

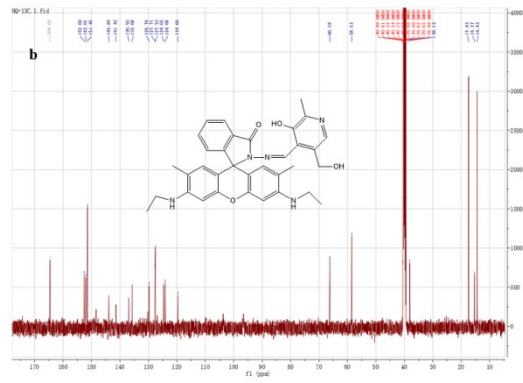
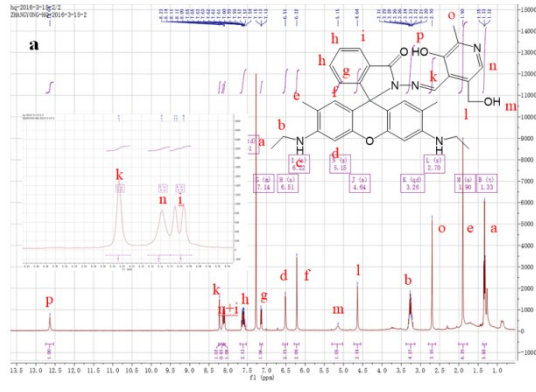


Fig. S1. The ^1H NMR (a) and ^{13}C NMR (b) spectra of R6GHP.

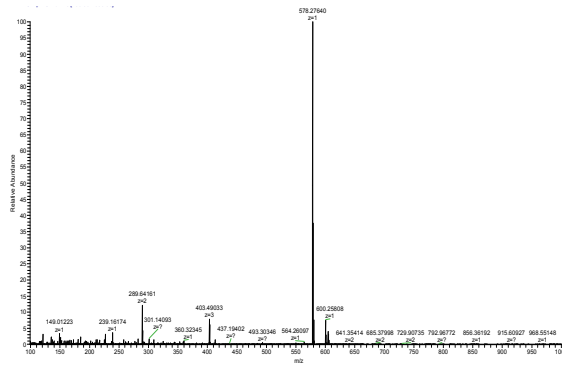


Fig. S2. The ESI-MS spectrum of R6GHP.

Table 1s Recovery study of environmental calibration standard of Cu (NO₃)₂.

Standard samples	C _{Cu²⁺(μg/L)}	C _{Cu²⁺ found (μg/L)}	Recovery (%)	RSD (%)
The ECS of Cu (NO ₃) ₂	250.0	234.0	93.59	0.50
	500.0	488.9	97.79	0.44

ECS means Environmental Calibration Standard.