

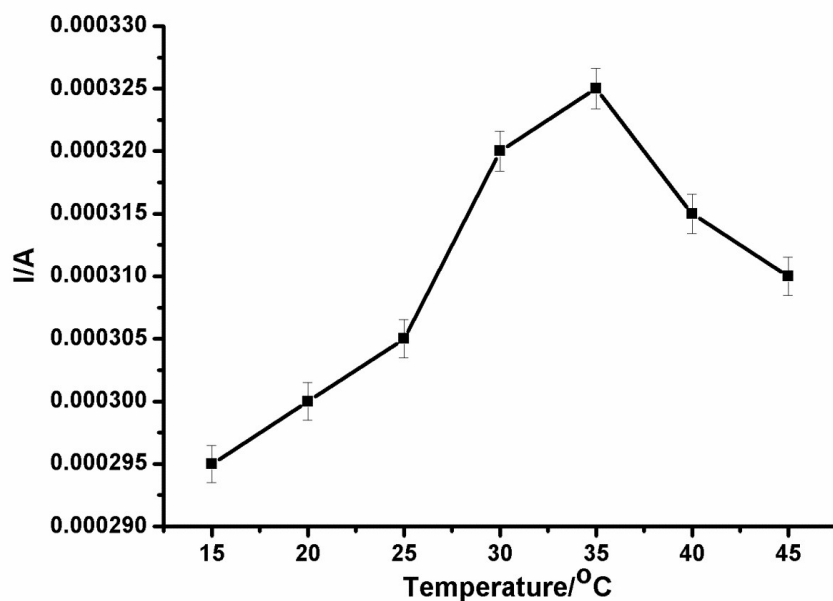
An alpha-feto protein electrochemical immunosensor based on a carbon/gold bi-nanoparticle platform

Azeez O Idris^a, Nonhlangabezo Mabuba^{a,b}, Omotayo A Arotiba^{a,b,*}

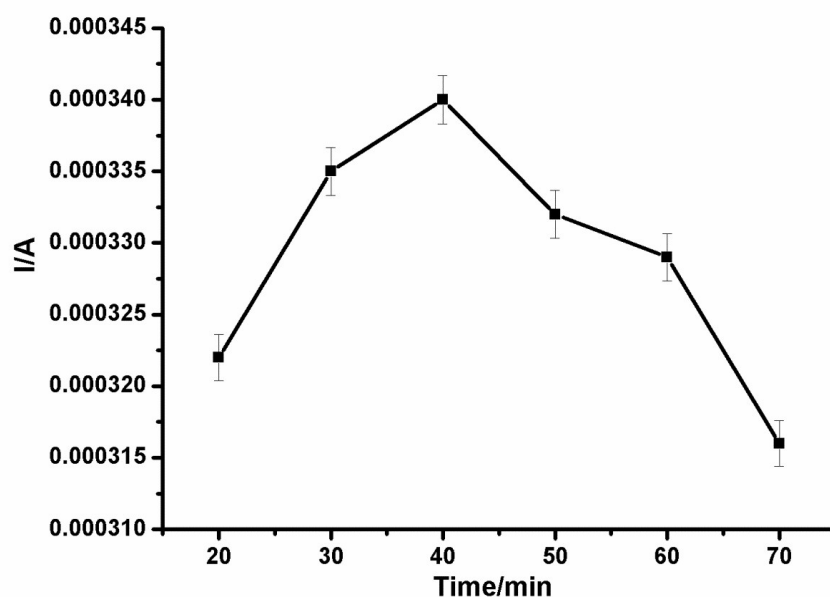
^a Department of Applied Chemistry, University of Johannesburg, South Africa,

^b Centre for Nanomaterials Science Research, University of Johannesburg, South Africa

Supplementary Figures



a)



b)

Optimisation parameters of AFP detection Supp. Fig. (1a) Incubation Temperature (1b) Incubation Time.