

Supporting Information

Homing peptide based ELISA-like method for selective and sensitive determination of fibrin

Yinghong Zhang, Yuanfu Zhang*, Tingting Hou, Rui Li, Qingwang Xue, Shuhao Wang *
Shandong Provincial Key Laboratory of Chemical Energy Storage and Novel Cell Technology,
School of Chemistry and Chemical Engineering, Liaocheng University, Liaocheng 252000, China

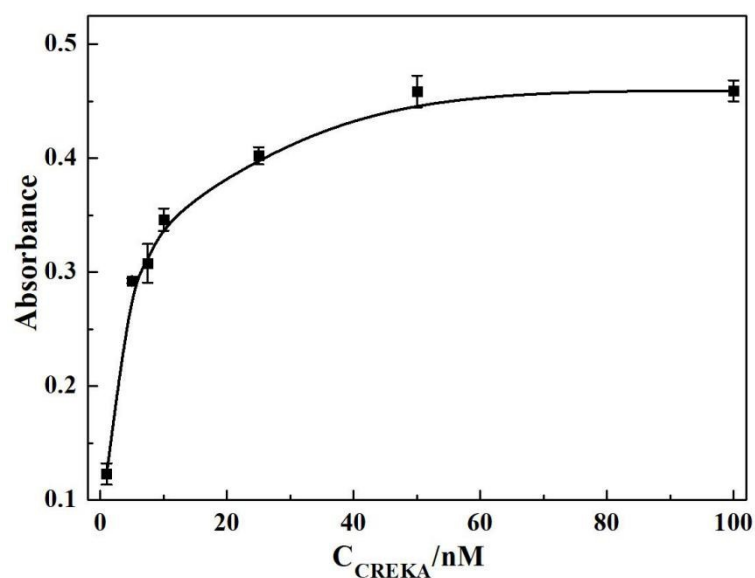


Fig. S1. The effect of CREKA on TMB–H₂O₂ system. Experimental conditions: 50 μL of 5 mM TMB, 50 μL of 10 mM H₂O₂, 50 μL of 20 mM Tris-HCl (pH 8.0), 7 min

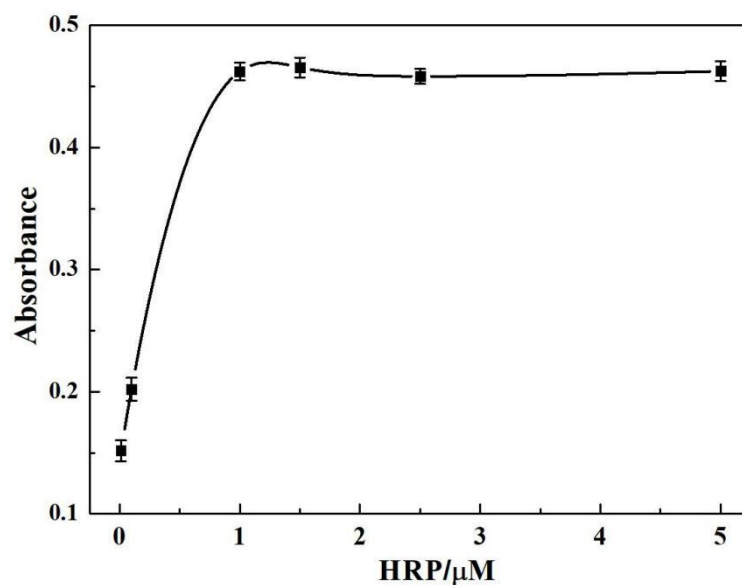


Fig. S2. The effect of HRP on TMB–H₂O₂ system. Experimental conditions: 50 μ L of 5 mM TMB, 50 μ L of 10 mM H₂O₂, 50 μ L of 20 mM Tris-HCl (pH 8.0), 7 min.

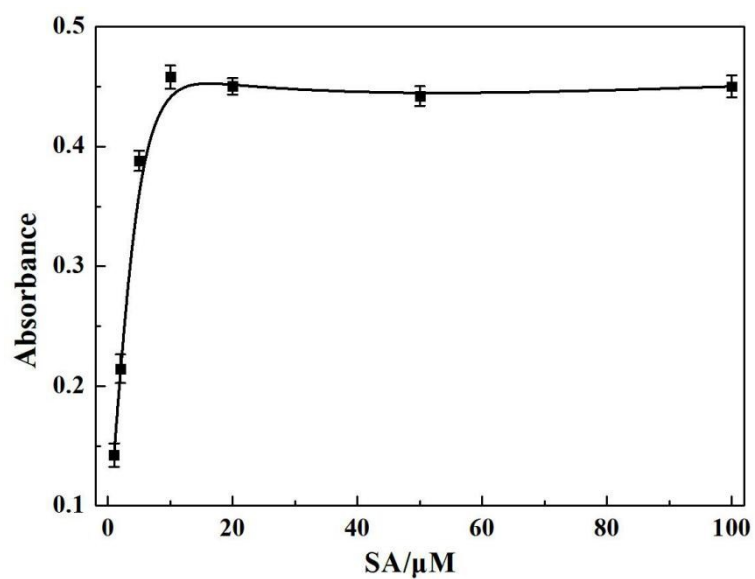


Fig. S3. The effect of SA on TMB–H₂O₂ system. Experimental conditions: 50 μ L of 5 mM TMB, 50 μ L of 10 mM H₂O₂, 50 μ L of 20 mM Tris-HCl (pH 8.0), 7 min

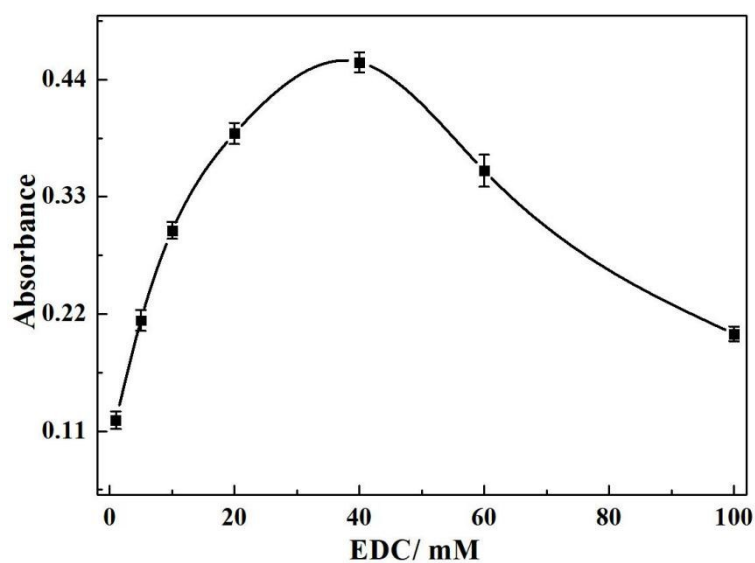


Fig. S4. The effect of EDC on TMB–H₂O₂ system. Experimental conditions: 50 μ L of 5 mM TMB, 50 μ L of 10 mM H₂O₂, 50 μ L of 20 mM Tris-HCl (pH 8.0), 7 min.

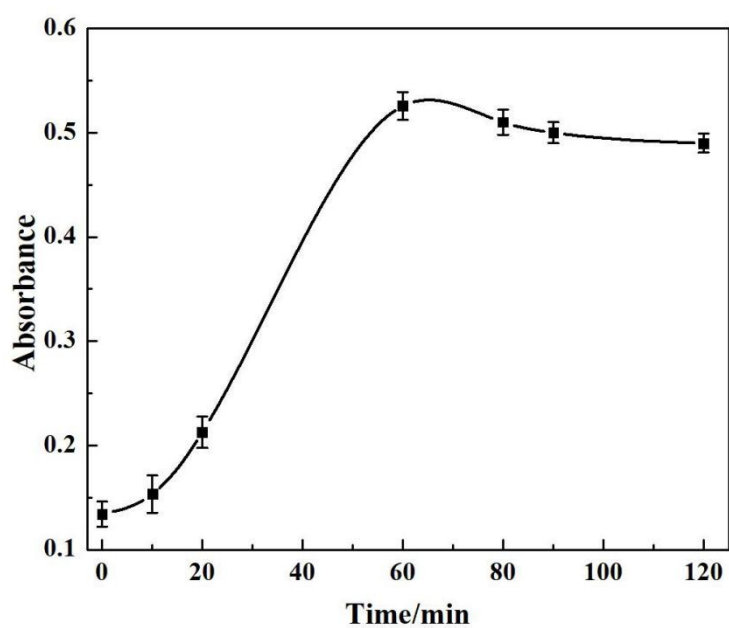


Fig. S5. The effect of incubation time of HRP and SA on TMB–H₂O₂ system. Experimental conditions: 50 μ L of 5 mM TMB, 50 μ L of 10 mM H₂O₂, 50 μ L of 20 mM Tris-HCl (pH 8.0), 7 min.

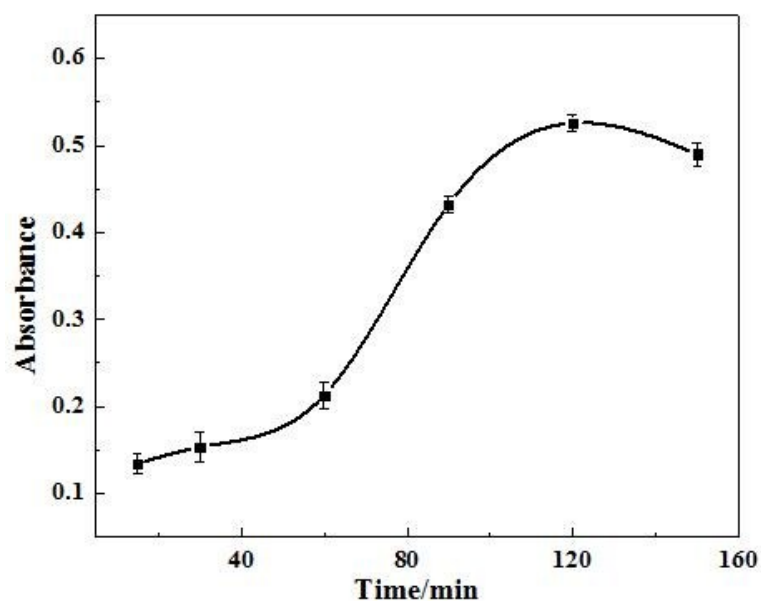


Fig. S6. The effect of coating time of HRP-SA-B-CREKA composite on TMB–H₂O₂ system. Experimental conditions: 50 μ L of 5 mM TMB, 50 μ L of 10 mM H₂O₂, 50 μ L of 20 mM Tris-HCl (pH 8.0), 7 min.

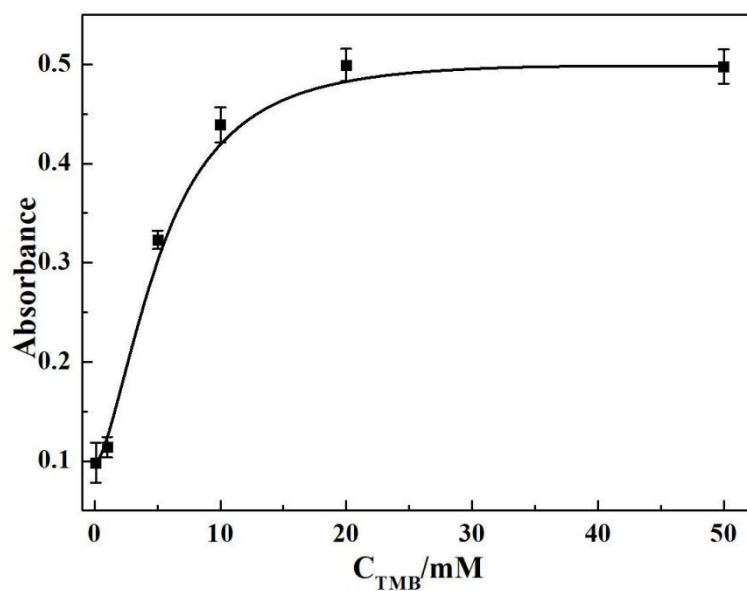


Fig. S7. The effect of the concentration of TMB on TMB–H₂O₂ system. Experimental conditions: 50 μ L of TMB with different concentrations, 50 μ L of 10 mM H₂O₂, 50 μ L of 20 mM Tris-HCl (pH 8.0), 7 min.

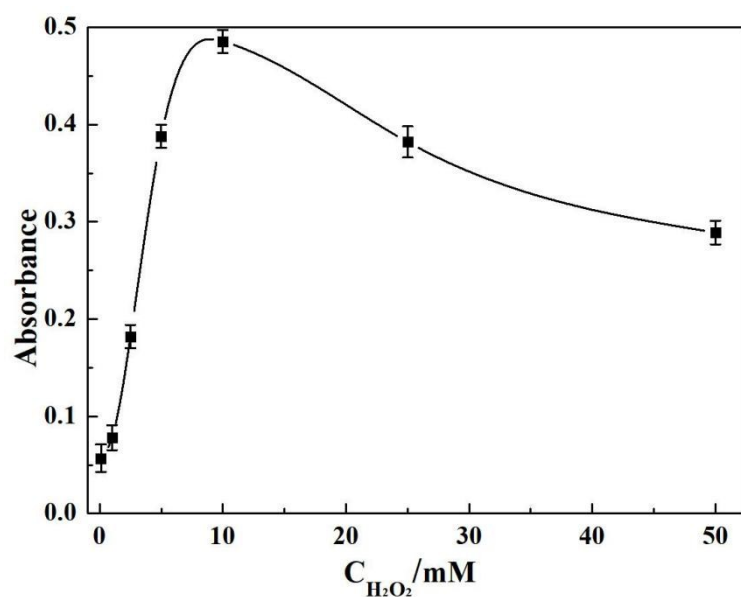


Fig. S8. The effect of concentration of H_2O_2 on TMB- H_2O_2 system. Experimental conditions: 50 μL of 5 mM TMB, 50 μL of H_2O_2 with different concentrations, 50 μL of 20 mM Tris-HCl (pH 8.0), 7 min.

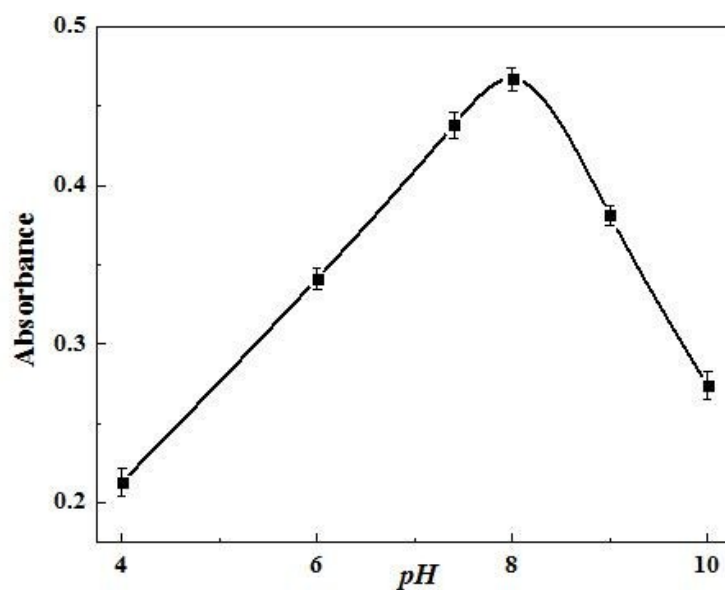


Fig. S9. The effect of pH on TMB- H_2O_2 system. Experimental conditions: 50 μL of 5 mM TMB, 50 μL of 10 mM H_2O_2 , 50 μL of 20 mM Tris-HCl with different pH, 7 min.