

## **Spin probe method of electron paramagnetic resonance spectroscopy – a qualitative test for measuring the evolution of dry eye syndrome under treatment**

Mihaela Monica Constantin,<sup>a</sup> Catalina Gabriela Corbu,<sup>a,b,c</sup> Cristiana Tanase,<sup>d,e</sup> Elena Codrici,<sup>d</sup> Simona Mihai,<sup>d</sup> Ionela Daniela Popescu,<sup>d</sup> Ana-Maria Enciu,<sup>d,f</sup> Sorin Mocanu,<sup>g</sup> Iulia Matei,<sup>g</sup> and Gabriela Ionita<sup>\*g</sup>

<sup>a</sup> Clinical Hospital of Ophthalmologic Emergencies, Alexandru Lahovari 1 Square, Bucharest, Romania

<sup>b</sup> Oftaclinic Clinic, Bd. Marasesti 2B, Bucharest, Romania

<sup>c</sup> Division of Ophthalmology, Faculty of Medicine, "Carol Davila" University of Medicine and Pharmacy, Bulevardul Eroii Sanitari 8, 050474 Bucharest, Romania

<sup>d</sup> "Victor Babes" National Institute of Pathology, Biochemistry-Proteomics Department, Splaiul Independentei 99-101, 050096 Sector 5, Bucharest, Romania

<sup>e</sup> Faculty of Medicine, "Titu Maiorescu" University, Strada Dâmbovicului 22, 040441, Sector 4, Bucharest, Romania

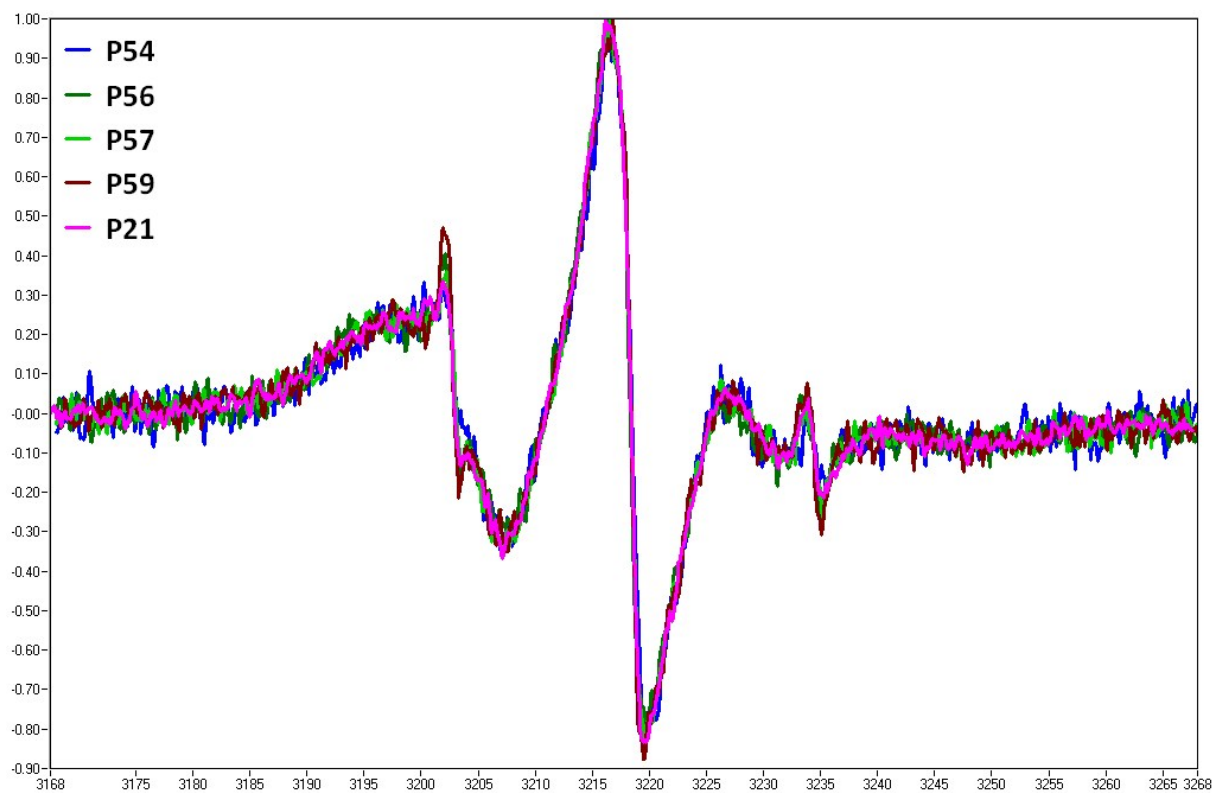
<sup>f</sup> "Carol Davila" University of Medicine and Pharmacy, Cellular and Molecular Medicine Department, no. 8 B-dul Eroilor Sanitari, 050474 Sector 5, Bucharest, Romania

<sup>g</sup> "Ilie Murgulescu" Institute of Physical Chemistry of the Romanian Academy, 202 Splaiul Independentei 060021, Bucharest, Romania

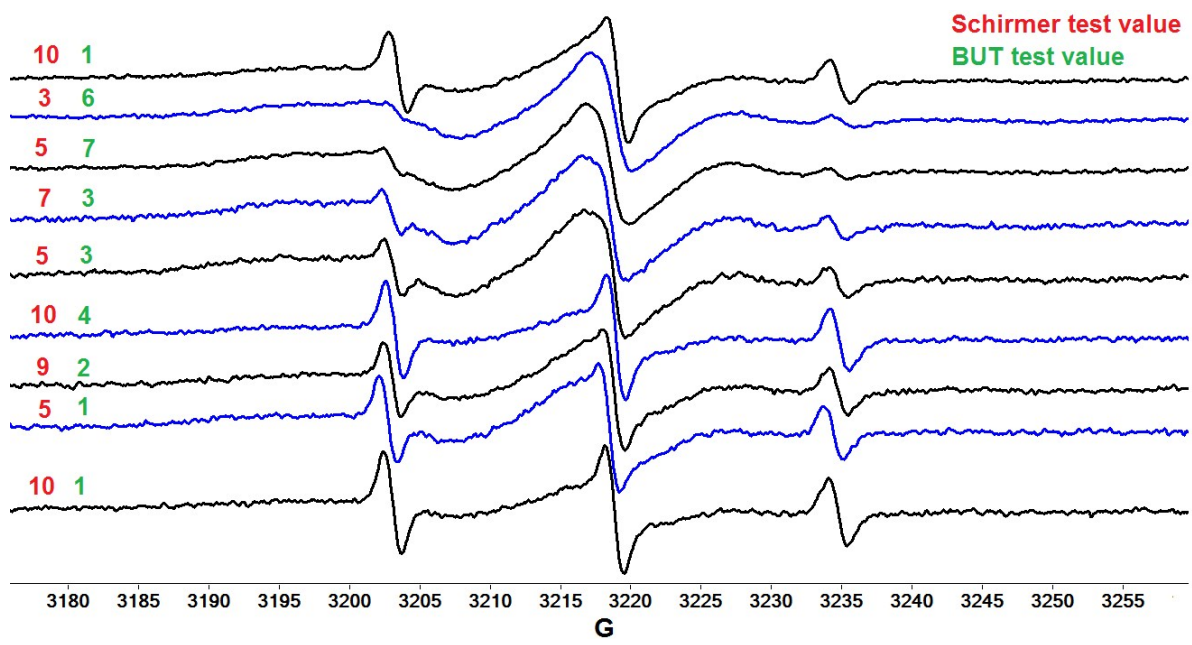
Corresponding author: Gabriela Ionita, "Ilie Murgulescu" Institute of Physical Chemistry of the Romanian Academy, 202 Splaiul Independentei 060021, Bucharest, Romania. E-mail: ige@icf.ro

**Table S1** Spearman correlations and probability values (p, in parentheses) of protein levels with ophthalmic parameters for **N** group

Protein	OSDI	Schirmer	BUT
TP (mg/ml)	0.500 (0.666)	0.558 (0.094)	0.063 (0.86)
ALB (µg/ml)	0.500 (0.666)	-0.608 (0.062)	-0.775 (0.029)
LYZ (mg/ml)	0.265 (0.562)	0.752 (0.019)	-0.380 (0.317)
LF (mg/ml)	-0.680 (0.036)	0.149 (0.701)	0.156 (0.688)



**Fig. S1** EPR spectra of 5-DSA in tear secretions from patients with normal eyes.



**Fig. S2** EPR spectra of 5-DSA in tear secretions from patients with dry eye.