

## Supplementary data

E-selectin-targeting, inflammatory microenvironment-responsive  
dextran-curcumin polymeric prodrug for acute kidney injury

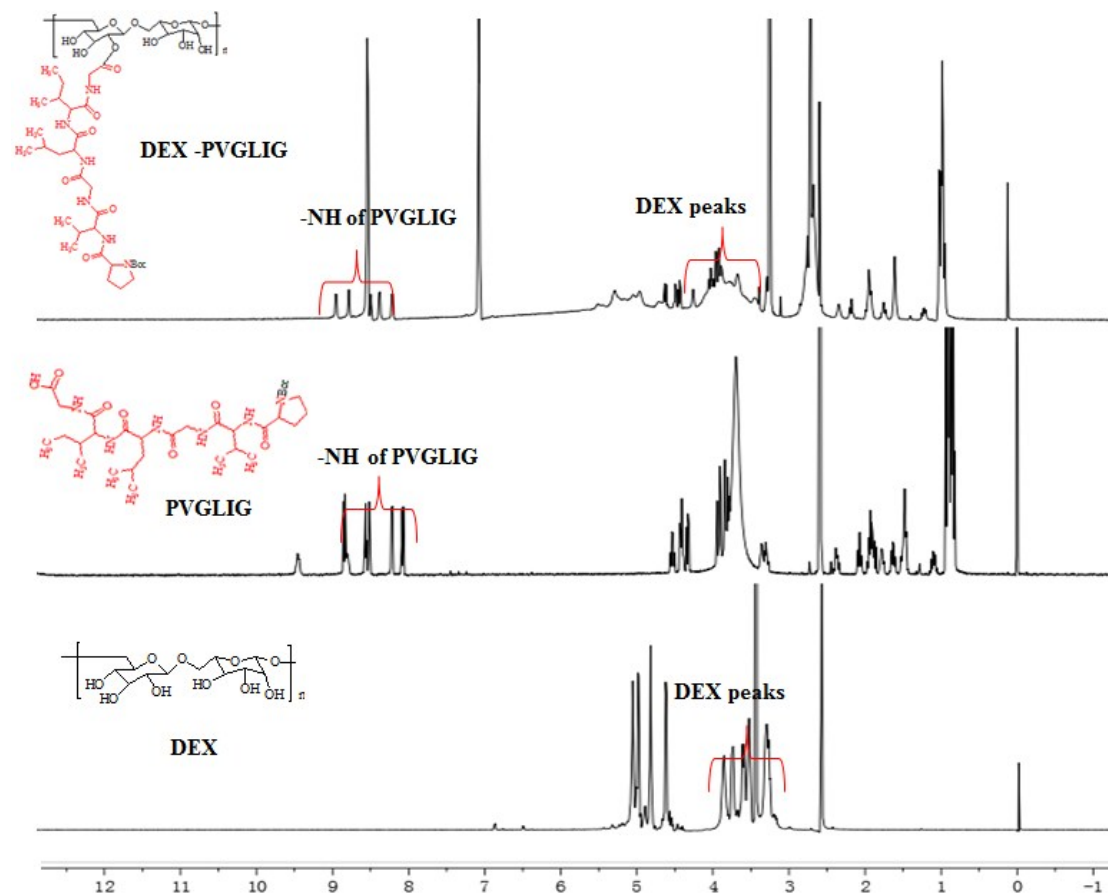


Figure S1. Characterization of DEX-PVGLIG.

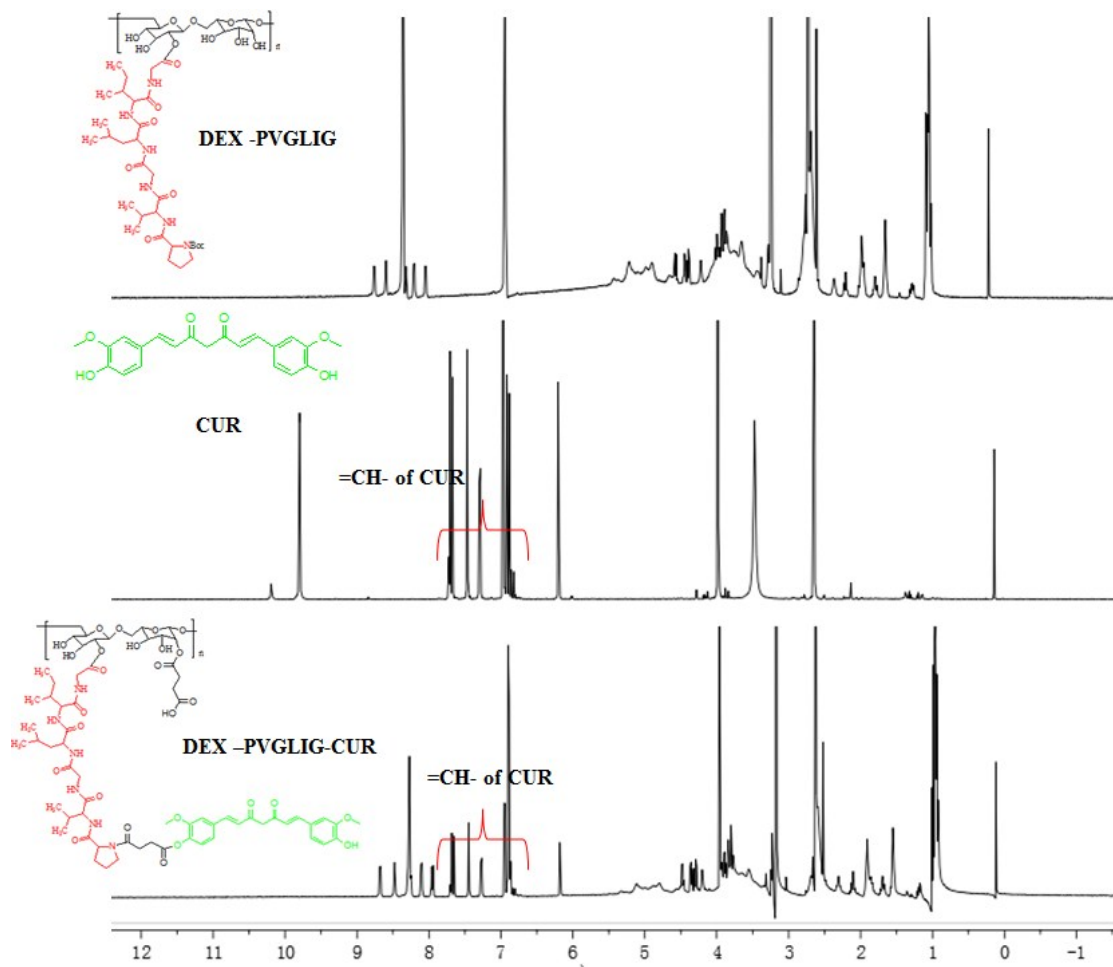


Figure S2. Characterization of DEX-PVGLIG-CUR.

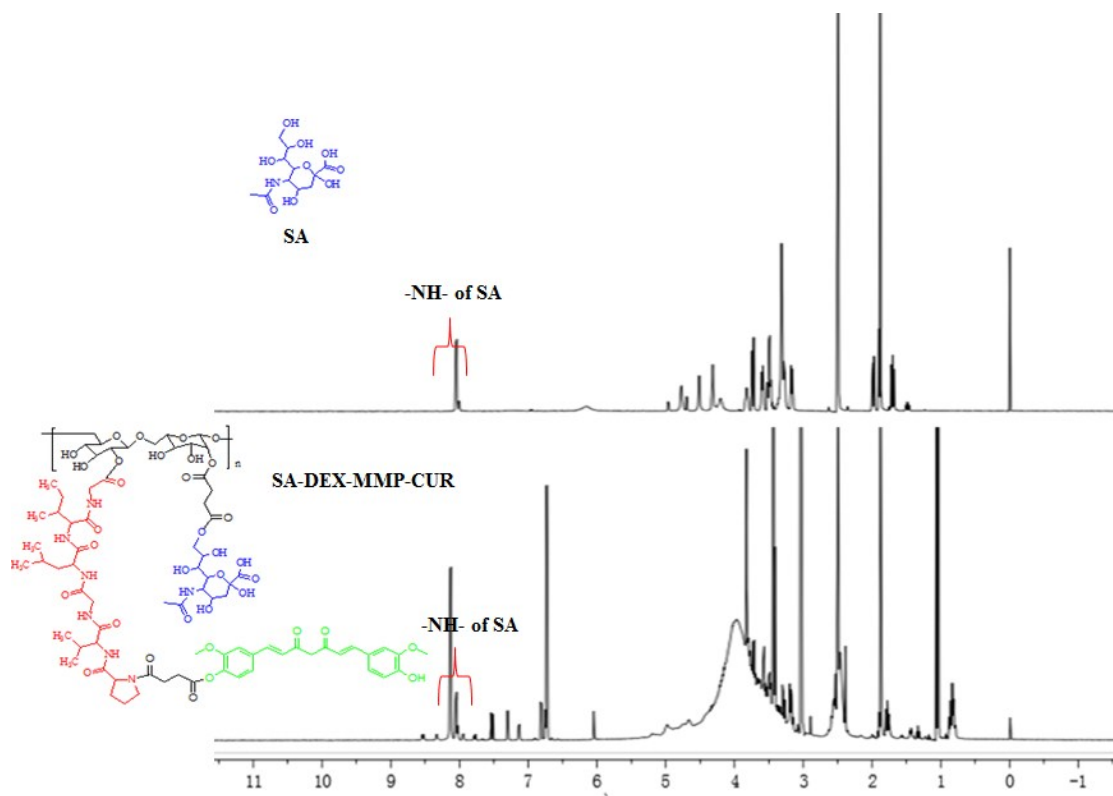


Figure S3. Characterization of SA-DEX-PVGLIG-CUR.

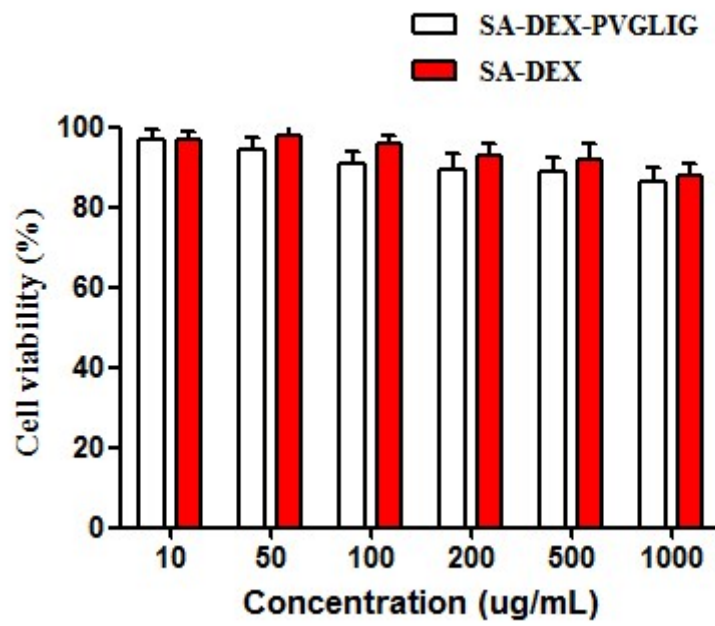


Figure S4. Cell survival of HUVECs incubated with different concentration of SA-DEX-PVGLIG for 48 h, SA-DEX as control. Data were presented as mean  $\pm$  SD ( $n = 3$ ).