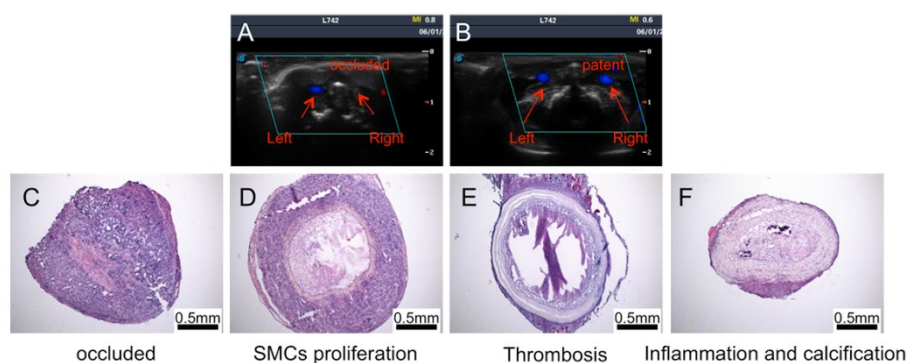


# Supporting Information



Supplementary Figure 1. The explanted scaffolds showed different occluded reason in the four groups. The patency of the explanted graft was checked by ultrasound assessment. The representative images of occluded graft (A) and patent graft (B) were shown. C, the lumen was occluded by stenosis in the microfiber group. D, the lumen of the graft was narrowed due to SMCs over-proliferation in the outer microfiber scaffold group. E, the graft failed due to thrombosis formation in the inner microfiber scaffold group. F, the graft failed due to server inflammation and calcification in the nanofiber group.