

Supplementary Materials

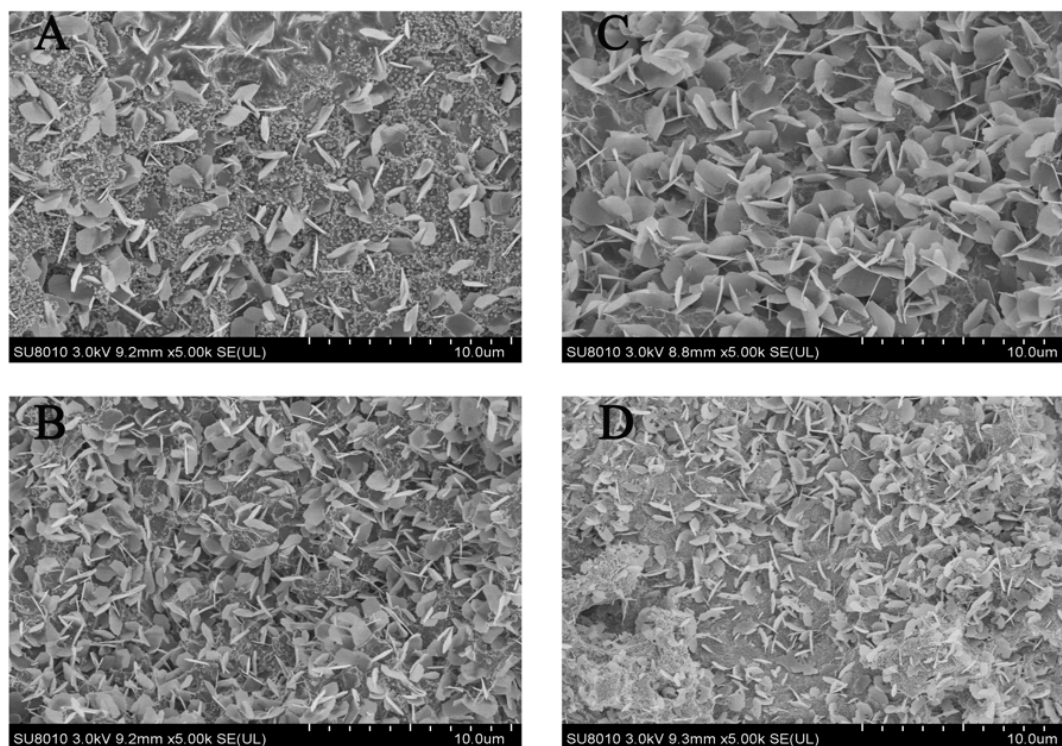


Fig 1. FSEM images of different conditions. (A) FSEM micrographs of 220°C, 12h, 0.01M. (B) FSEM micrographs of 220°C, 12h, 0.03M. (C) FSEM micrographs of 220°C, 12h, 0.05M. (D) FSEM micrographs of 220°C, 12h, 0.1M. Scale bar: 10μm.

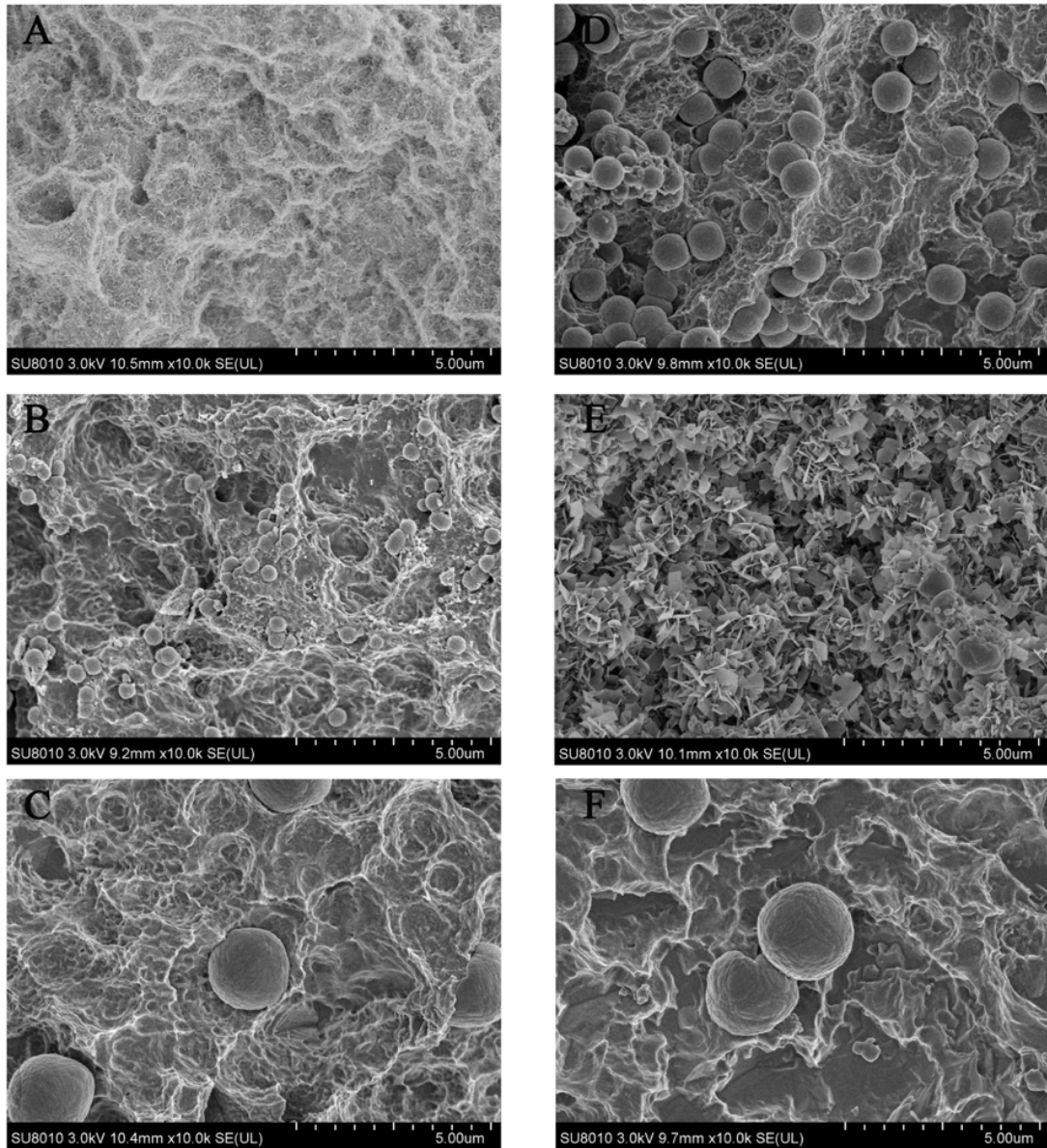


Fig 2. FSEM images of different conditions. (A) FSEM micrographs of 220°C, 1h, 0.05M. (B) FSEM micrographs of 220°C, 2h, 0.05M. (C) FSEM micrographs of 220°C, 8h, 0.05M. (D) FSEM micrographs of 220°C, 10h, 0.05M. (E) FSEM micrographs of 220°C, 12h, 0.05M. (F) FSEM micrographs of 220°C, 14h, 0.05M. Scale bar: 5µm.

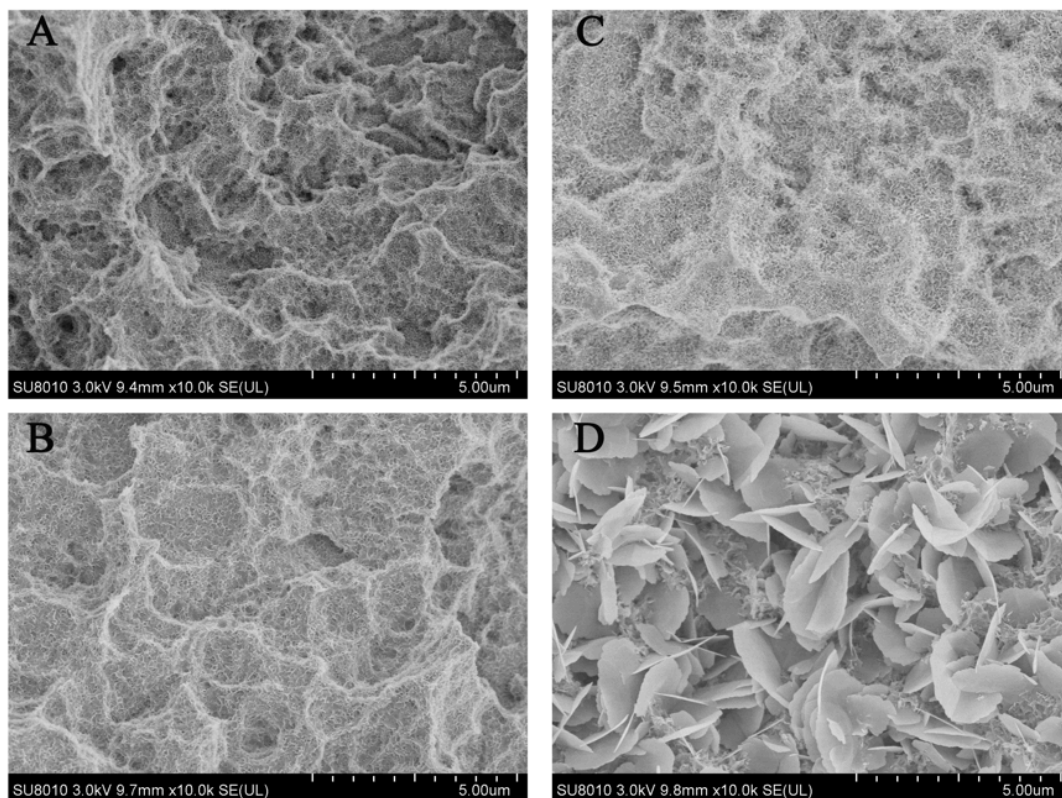


Fig 3. FSEM images of different conditions. (A) FSEM micrographs of 80°C, 12h, 0.05M. (B) FSEM micrographs of 100°C, 12h, 0.05M. (C) FSEM micrographs of 140°C, 12h, 0.05M. (D) FSEM micrographs of 160°C, 12h, 0.05M. Scale bar: 5µm.

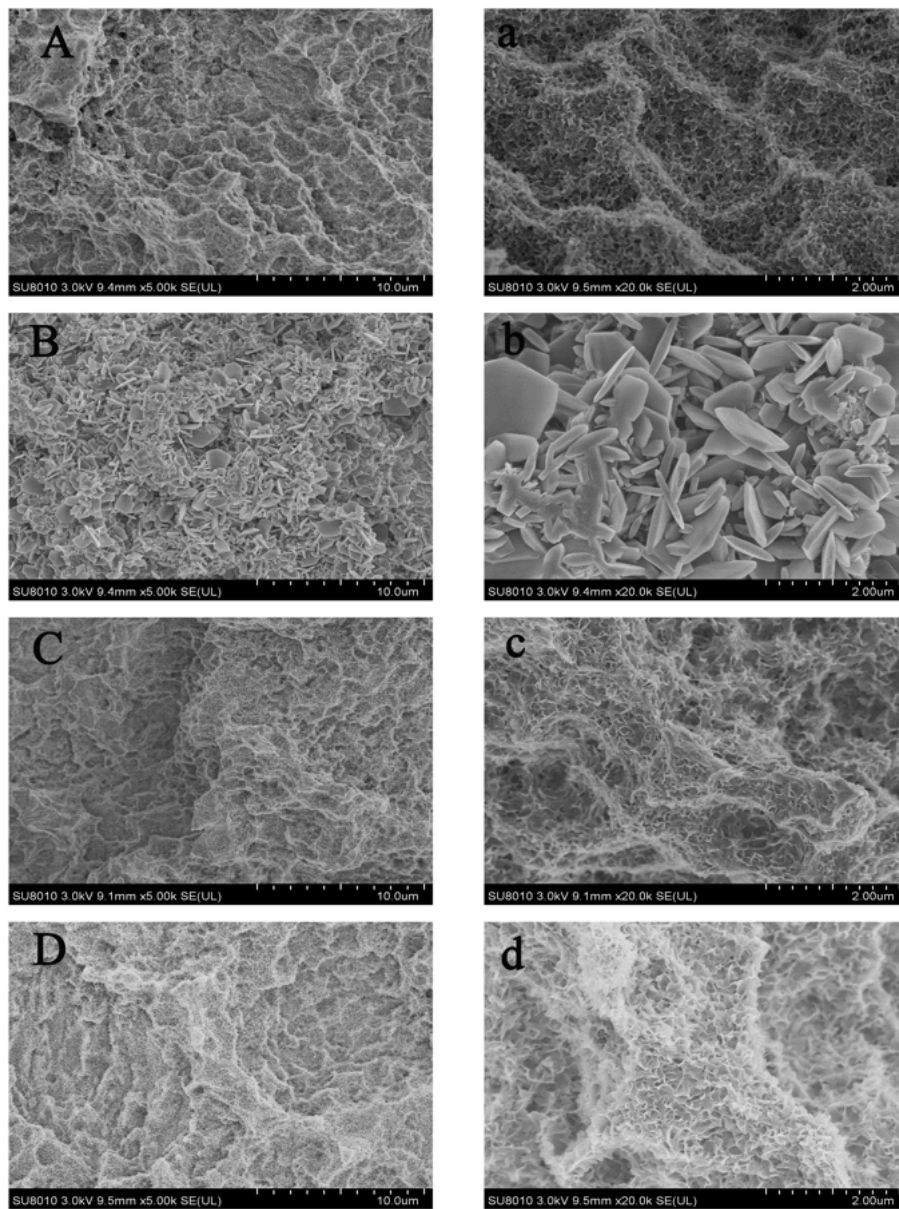


Fig 4. FSEM images of different conditions. (A) FSEM micrographs of 120°C, 12h, 0.01M. (B) FSEM micrographs of 120°C, 12h, 0.03M. (C) FSEM micrographs of 120°C, 12h, 0.05M. (D) FSEM micrographs of 120°C, 12h, 0.1M. Scale bar: (A-D) 10µm. (a-d) 2µm.

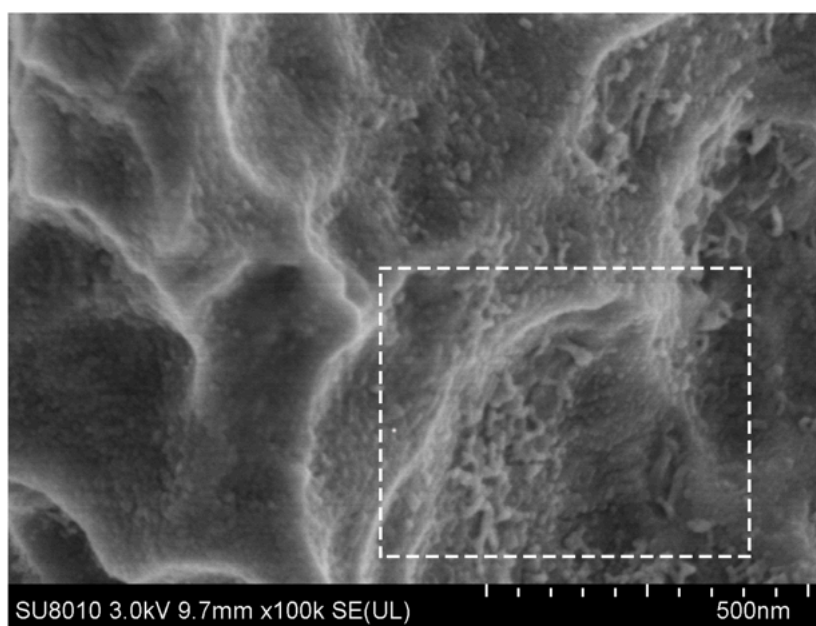


Fig 5. FSEM micrographs of 120°C, 12h, 0.05M. Scale bar: 500nm.

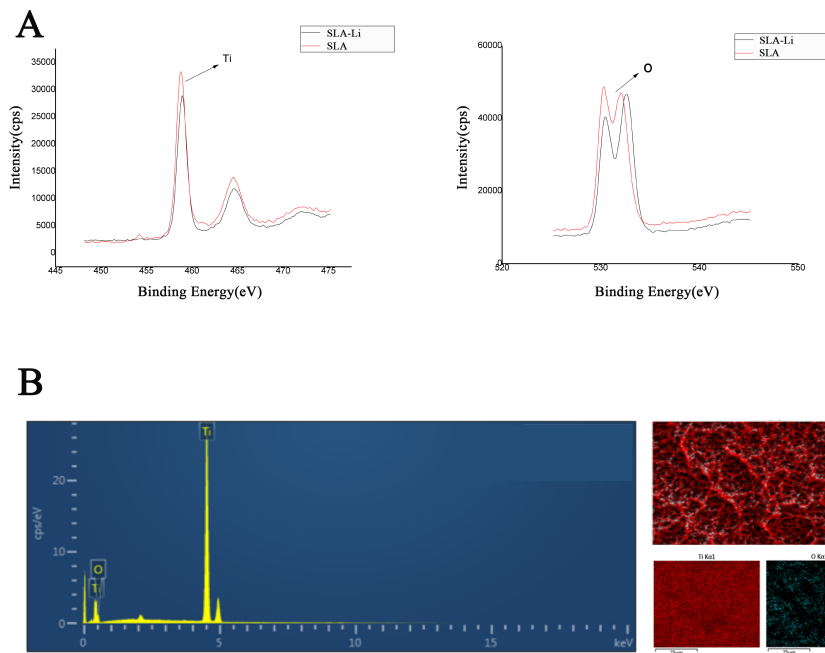


Fig 6. Physicochemical characteristics were evaluated. (A) The intensity of Ti 2p and O 1s in different surface. (B) EDS analysis of SLA-Li surface.

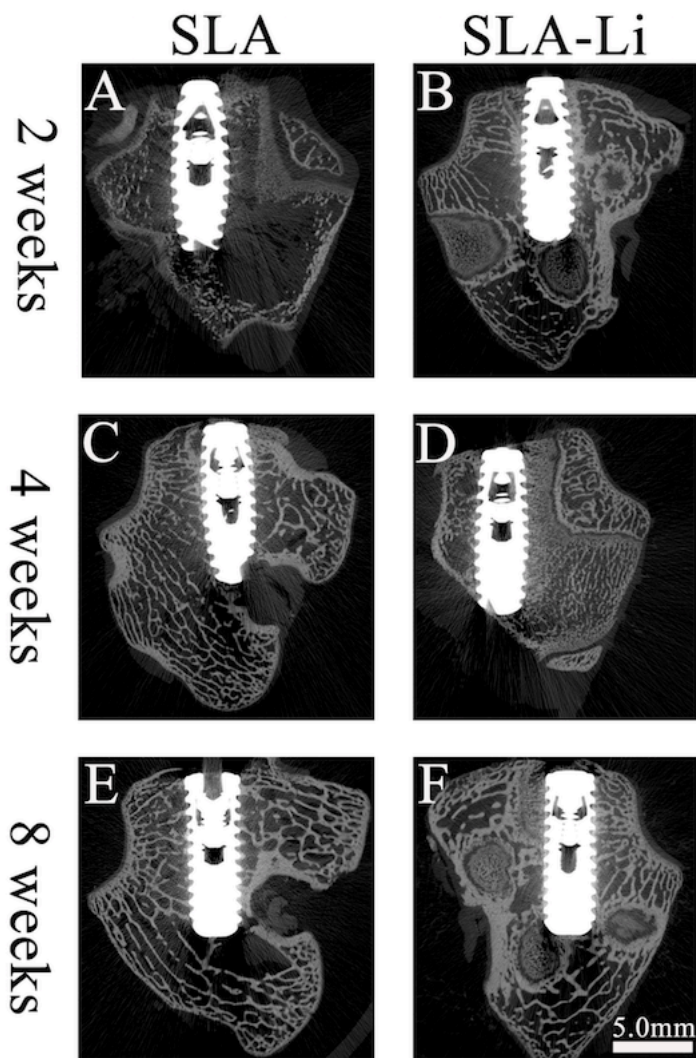


Fig 7. The transverse plane of 2D images observed via micro-CT. 2 weeks (A and B), 4 weeks (C and D) and 8 weeks (E and F) after implantation in rabbit femurs. Scale bar: 5 mm.