

Electronic Supplementary information:

Sulfur-driven Switching of the Ullmann Coupling on Au(111)

Jonathan Rodríguez-Fernández^{*a}, Søren Birthin Schmidt^a, Jeppe V. Lauritsen^a

^a*Interdisciplinary Nanoscience Center (iNANO), Aarhus University, 8000 Aarhus C, Denmark*

^{*}Correspondence to: jonathan.rodriguez@inano.au.dk

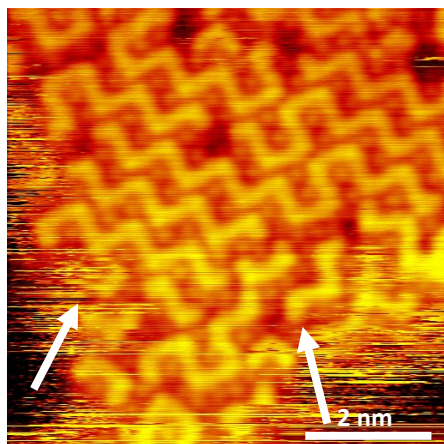


Fig. S1 STM-image ($V=+0.2$ V, $I_t=+0.6$ nA), acquired at 110K, of Au(111) after deposition of DBDBT molecules at 150 K, where it is possible to observe the mobility of the molecules comparing with fig. 1b, even at 100 K.

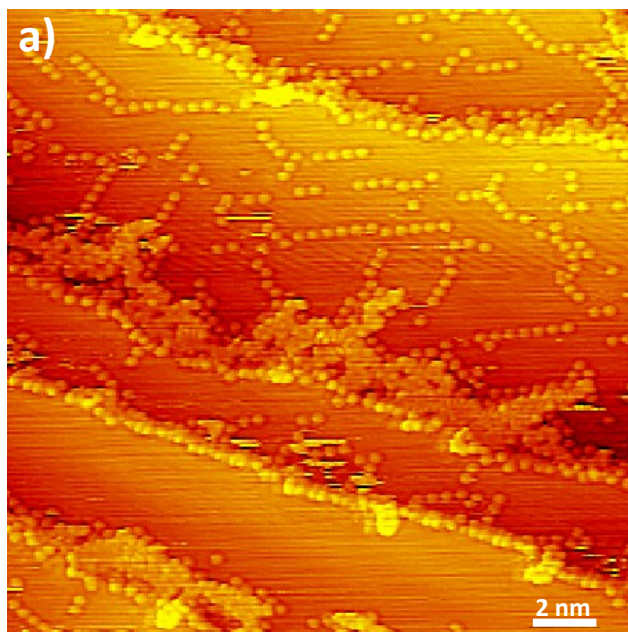


Fig. S2 STM-images of S-Au complex on Au(111), recorded at 100 K, after deposition of H₂S vapor and subsequent annealing at 673 K for 10 min. The step edges are fully covered and it is possible to observe a higher density of the S-Au complex at the step edges. V=-0.6 V, I=-0.4 nA.