

The PO13 crystal structure of ROY

Karen Gushurst¹, Jonas Nyman^{2,3}, Stephan X.M. Boerrigter^{1*}

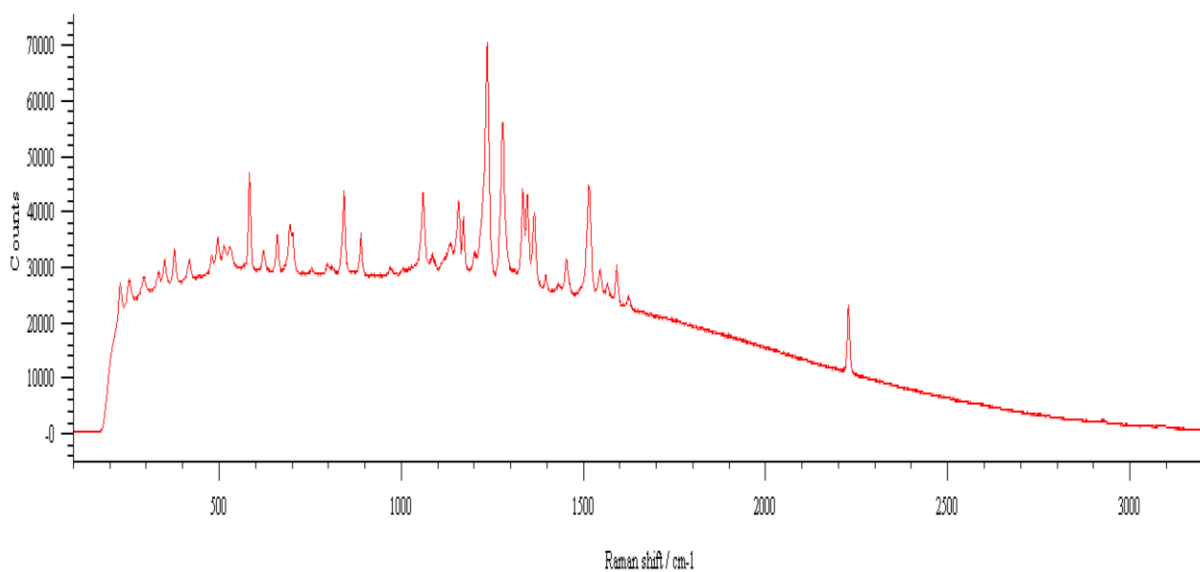
¹SSCI a division of Albany Molecular Research Inc., West Lafayette, IN 47906

²Small Molecule Design & Development, Eli Lilly and Company, Indianapolis, IN 46221

³School of Pharmacy, University of Wisconsin–Madison, Madison, WI 53705

*corresponding author

SUPPLEMENTAL MATERIALS.



Text1: Acquisition1

Filename: 694973-1.wxd

Date: 2/10/2015 1:27:32 PM

Operator: A730083

Laser: Renishaw 785nm

BeamPath: Grating

Grating: 1200 l/mm (633/780)

Focus mode: Linefocus

Spectral range: 98.86 to

Acquisition time: 10

Accumulations: 1

Cosmic ray removal: False

Description: 340391, ROY, file 694973-1

Figure S1. Raman spectrum of ROY PO13.

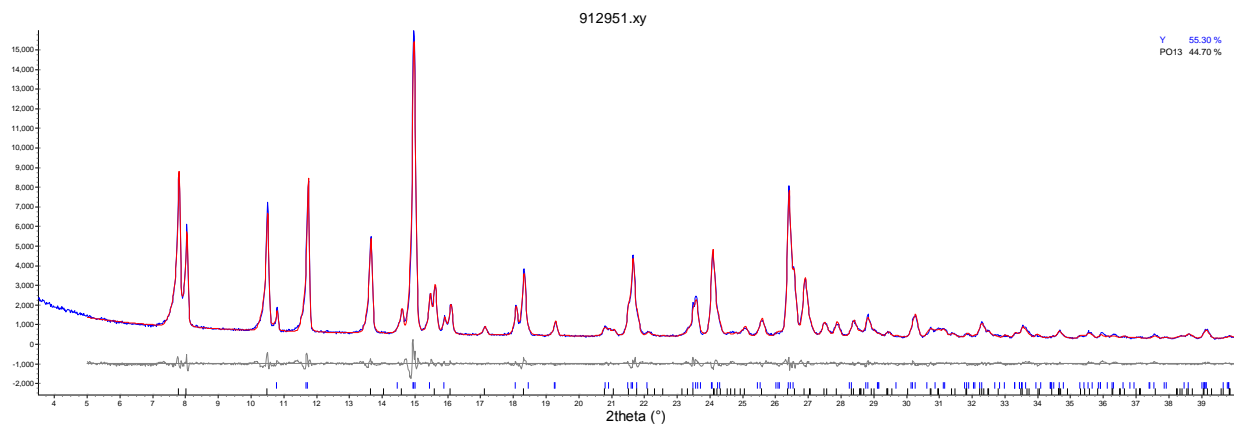


Figure S2. Rietveld refinement for the 2018 mixture of forms PO13 and Y. The fitted mixture ratio is PO13/Y = 55.30%/44.70%.

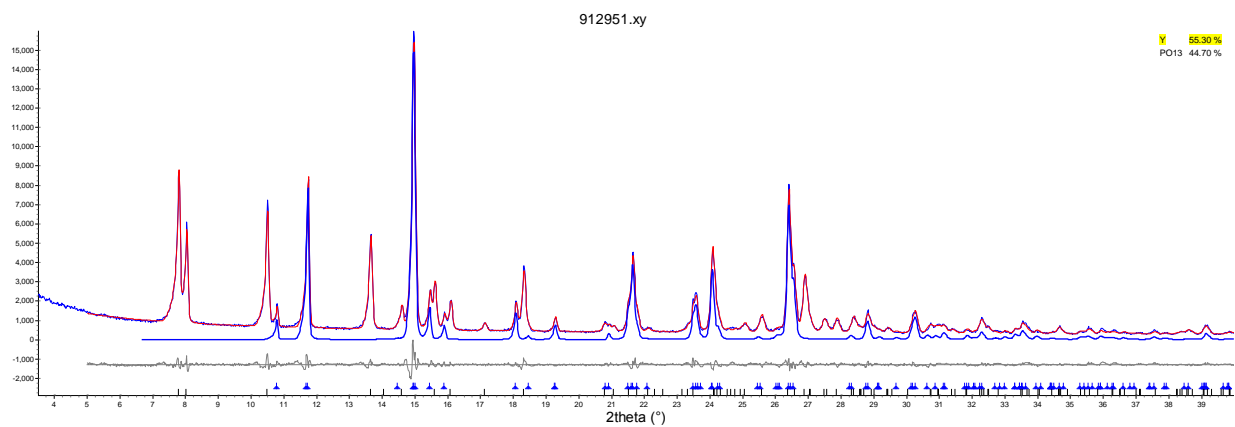


Figure S3. Rietveld refinement for the 2018 mixture of forms PO13 and Y. The contribution of Form Y is highlighted in blue.

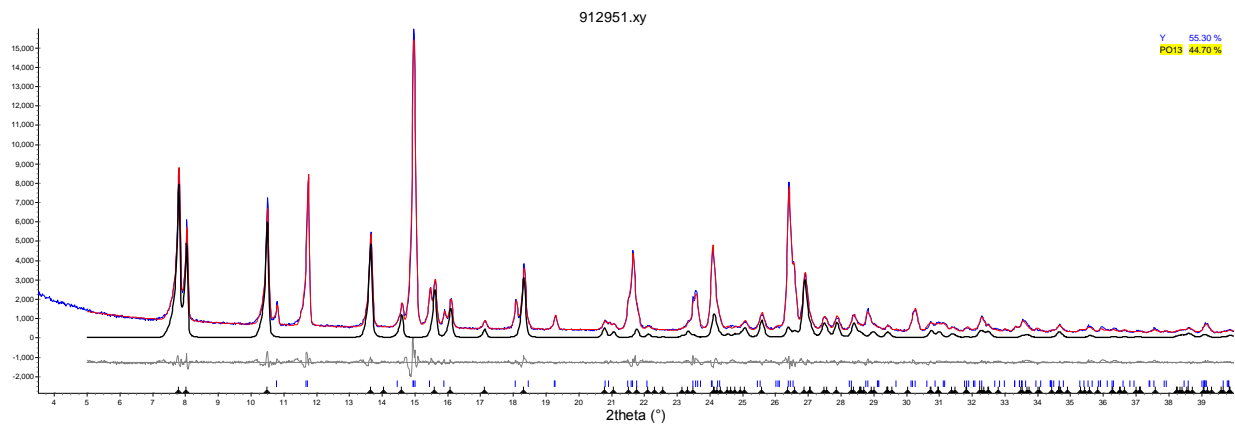


Figure S4. Rietveld refinement for the 2018 mixture of forms PO13 and Y. The contribution of Form PO13 is highlighted in black.