

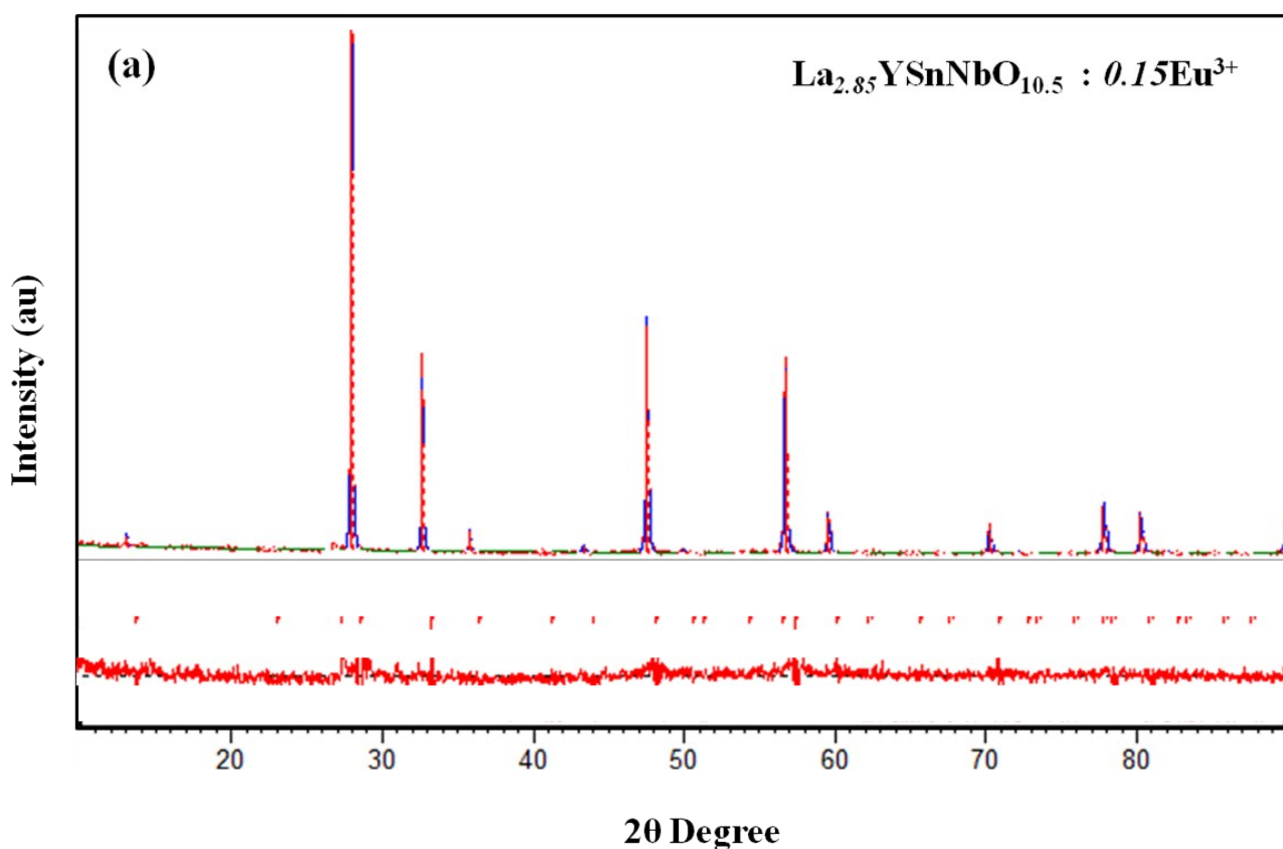
Supporting Information (S1) for

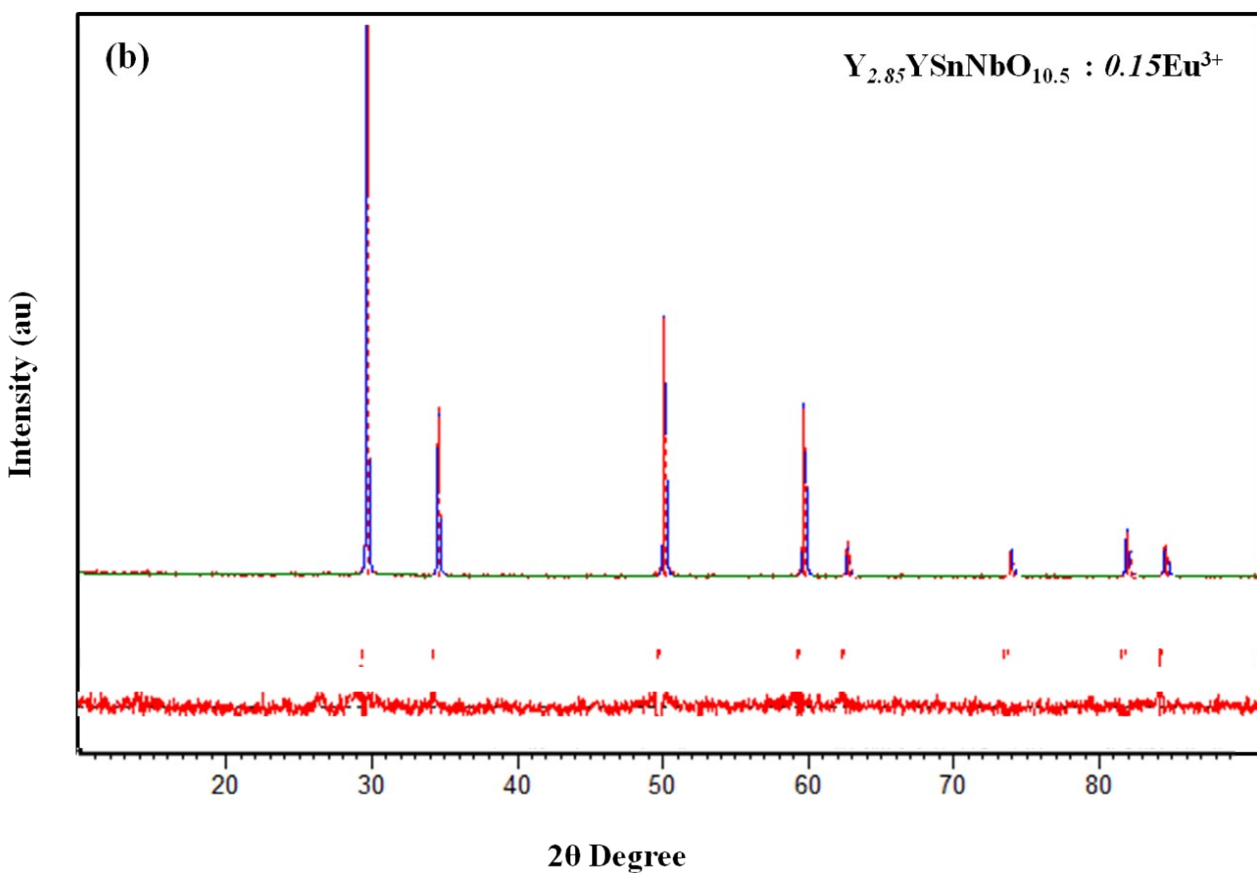
**Exploitation of  $\text{Eu}^{3+}$  Red Luminescence through Order - Disorder Structural Transition in Lanthanide Stannate Pyrochlores for warm White LED Applications**

T. S. Sreena, P. Prabhakar Rao\*, Athira K. V. Raj, T. R. Aju Thara

*Materials Science and Technology Division, CSIR-National Institute for Interdisciplinary Science and Technology (NIIST), Trivandrum – 695 019, India*

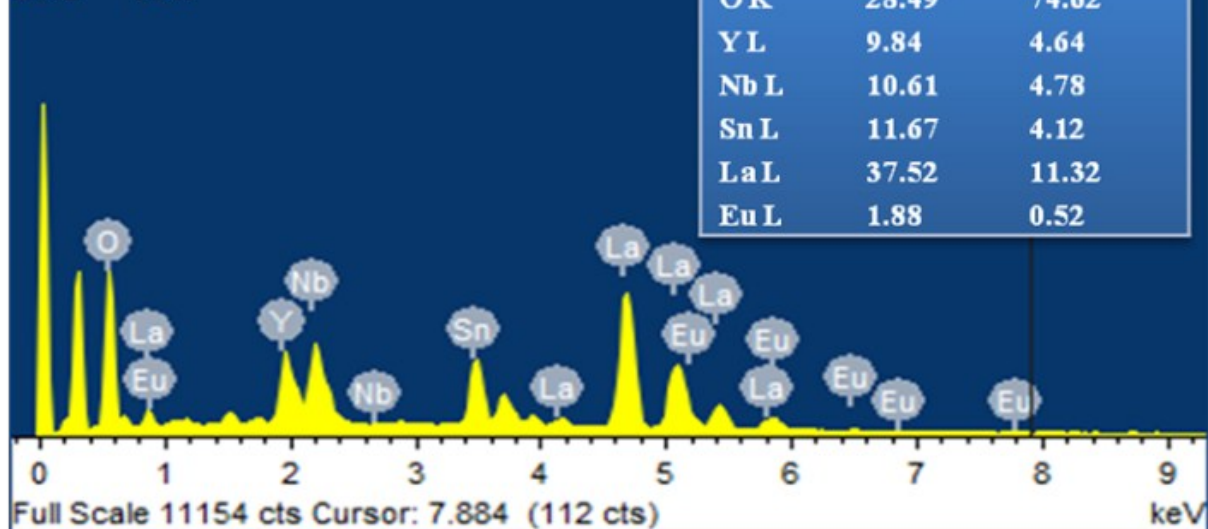
---



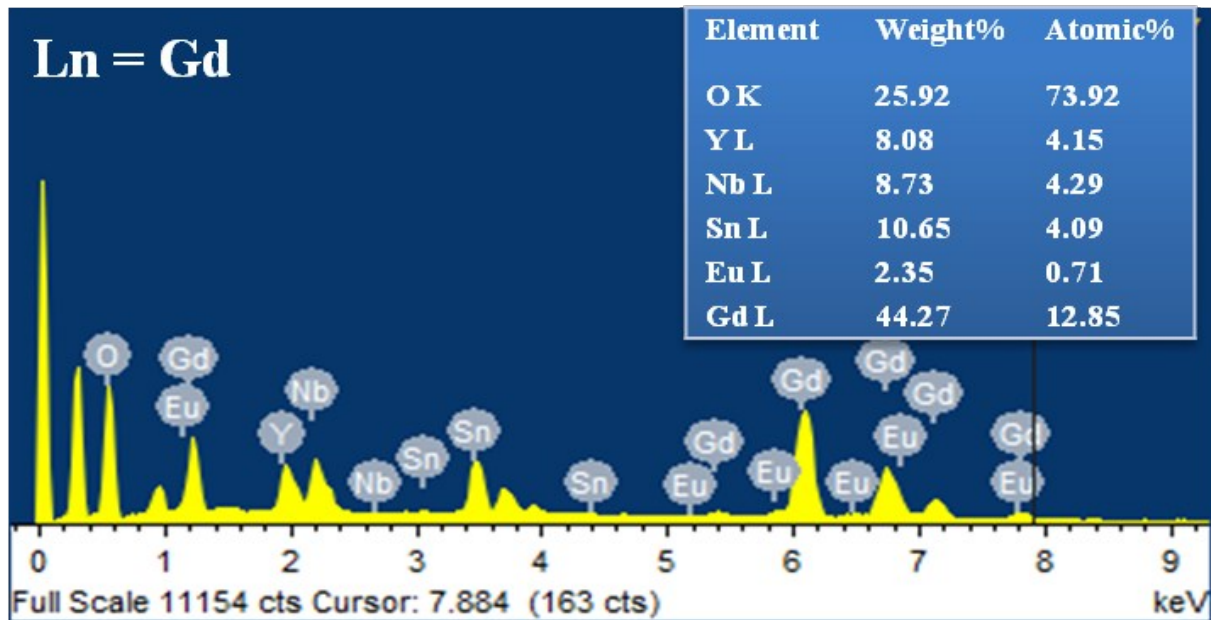


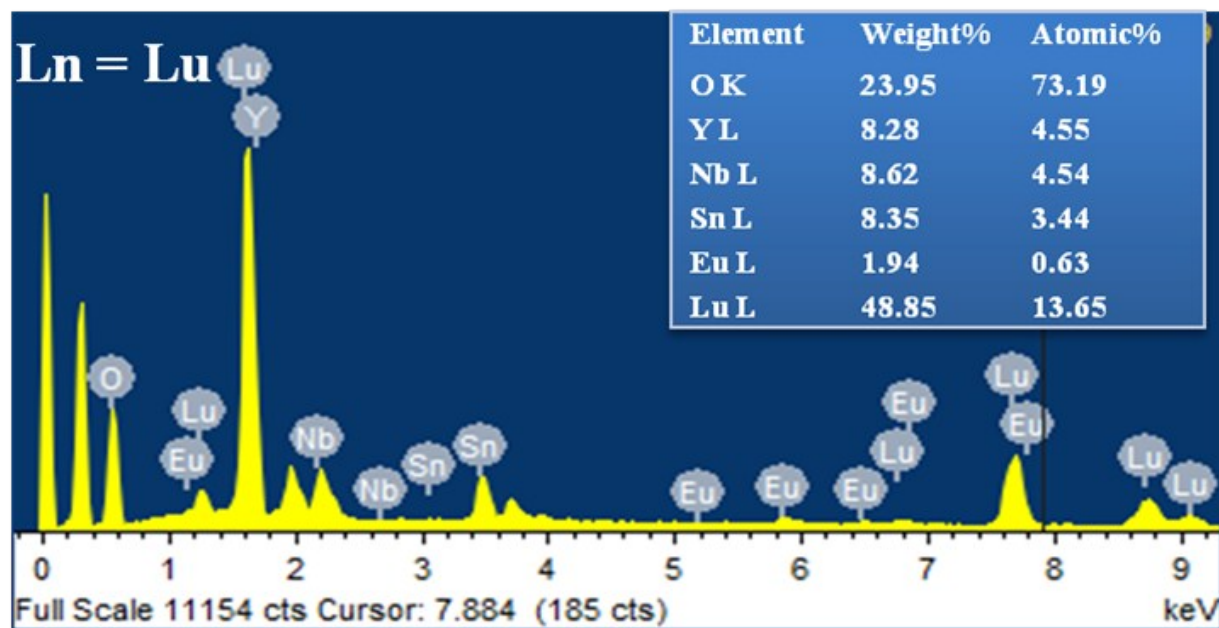
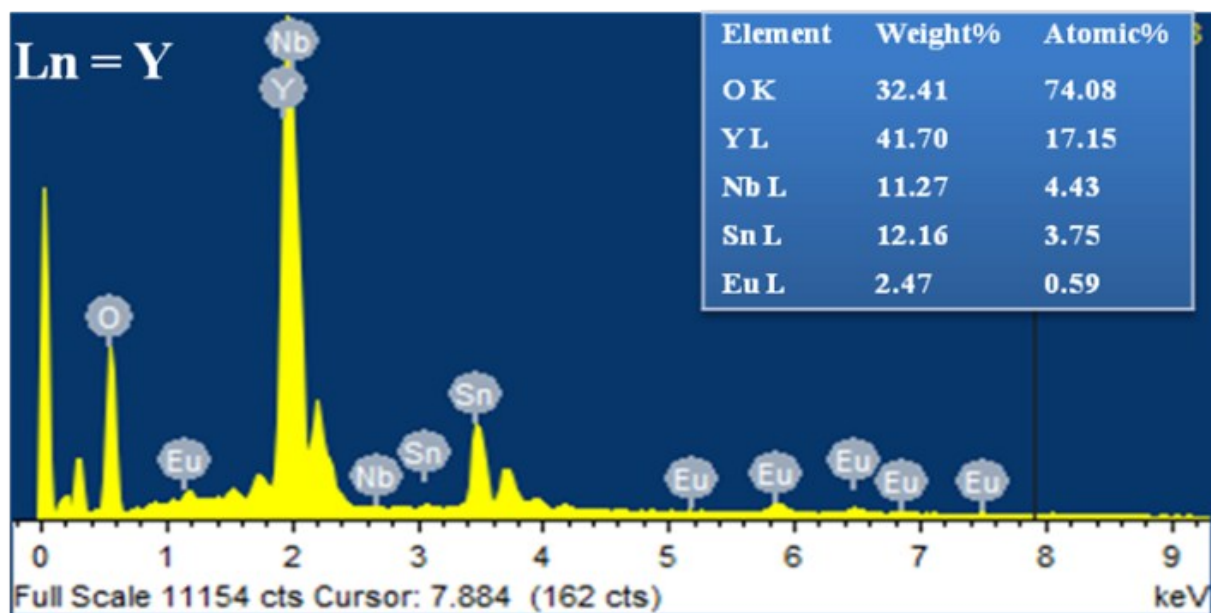
**Fig. S1** Observed, calculated and difference XRD patterns of **(a)** pyrochlore structured  $\text{La}_{2.85}\text{YSnNbO}_{10.5} : 0.15\text{Eu}^{3+}$  and **(b)** fluorite structured  $\text{Y}_{3.85}\text{YSnNbO}_{10.5} : 0.15\text{Eu}^{3+}$ . Rietveld analysis was performed using commercial X'Pert Highscore Plus software.

Ln = La

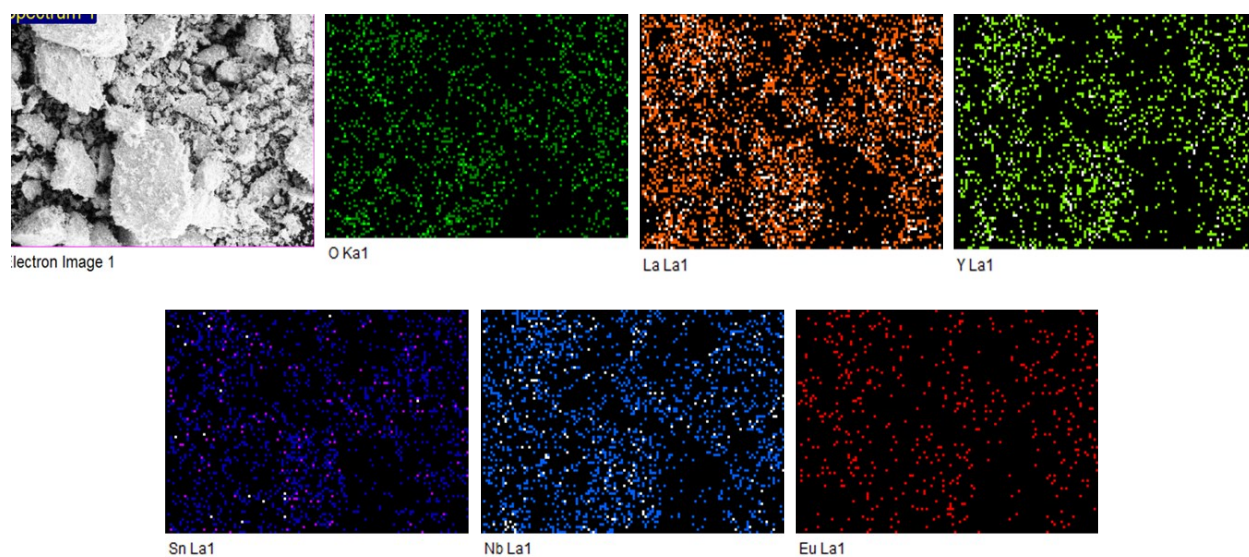


Ln = Gd





**Fig. S2** EDS spectra of  $\text{Ln}_{2.85}\text{YSnNbO}_{10.5}:0.15\text{Eu}^{3+}$  (Ln = La, Gd, Y and Lu) phosphors and EDAX microanalysis confirms the chemical homogeneity of the powders prepared by solid state route.



**Fig. S3** Elemental mapping of typical  $\text{La}_{2.90}\text{YSnNbO}_{10.5}:0.10\text{Eu}^{3+}$  red phosphor which confirms the uniform distribution of all the elements in the lattice.