

Supporting Information

Silver Metal Complex as a Luminescent Probe for Enzymatic Sensing of Blood Plasma Glucose and Urine

Zheng-Bang Pan,^a Ying-Chu Wang,^a Gomathy Chakkaradhari,^b Jian Fan Zhu,^a Rong-Yu He,^a Yu-Ci Liu,^a Chia-Hui Hsu,^a Igor O. Koshevoy,^{*,b} Pi-Tai Chou,^{*,c} Sheng-Wei Pan,^{d,e,f} and Mei-Lin Ho^{*,a}

^{*a} Department of Chemistry, Soochow University, No 70, LinShih Rd., Shih-Lin, Taipei 11102, Taiwan. Fax: +886-2-28811053; Tel: +886-2-28819471 ext 6827; E-mail: meilin_ho@scu.edu.tw

^{*b} University of Eastern Finland, Department of Chemistry, 80101, Joensuu, Finland

^{*c} National Taiwan University, Department of Chemistry, Taipei 106, Taiwan

^d Department of Chest Medicine, Taipei Veterans General Hospital, Taipei, Taiwan

^e School of Medicine, National Yang-Ming University, Taipei, Taiwan

^f Institute of Public Health, National Yang-Ming University, Taipei, Taiwan

Supplementary materials:

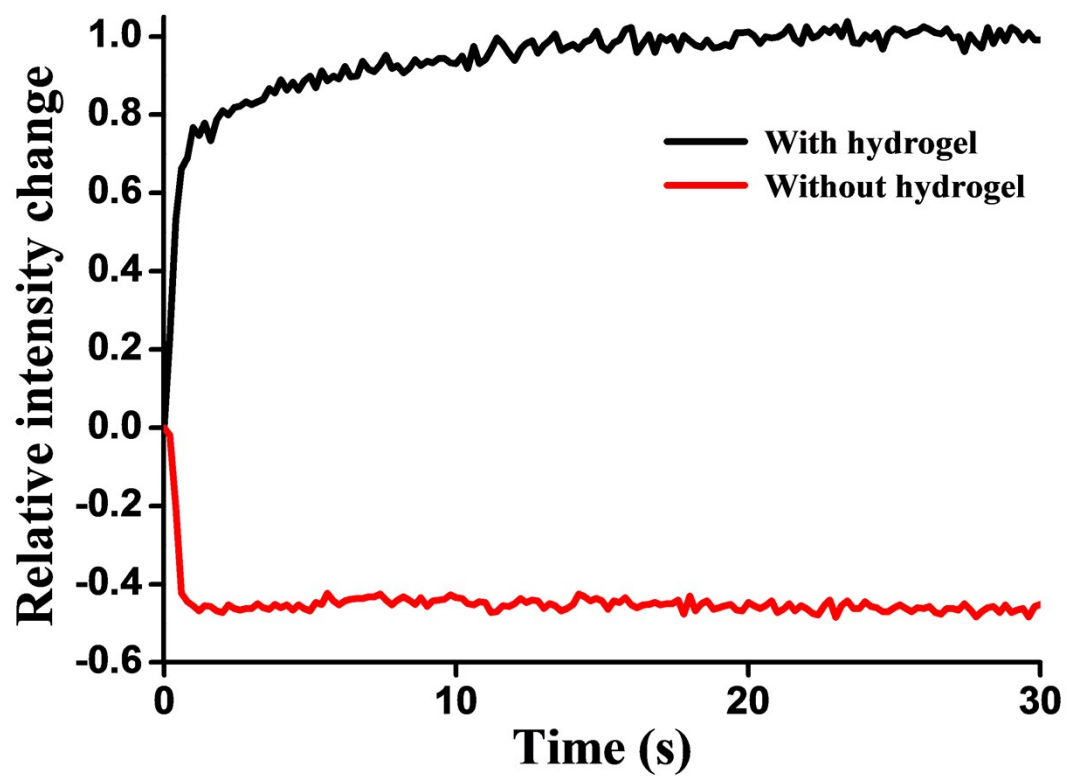


Figure S1. The photoresponse of complex **Ag3** for detecting glucose in air and in solution.

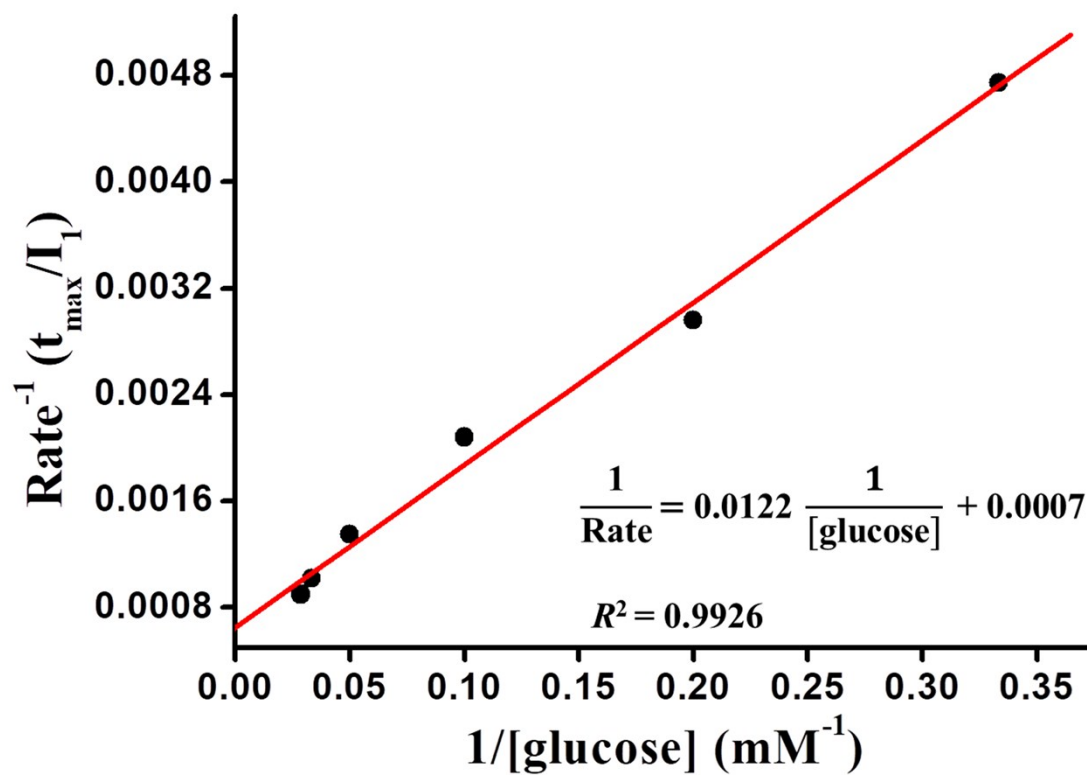


Figure S2. The Lineweaver–Burk plot of the reciprocal of the Michaelis–Menten equation.

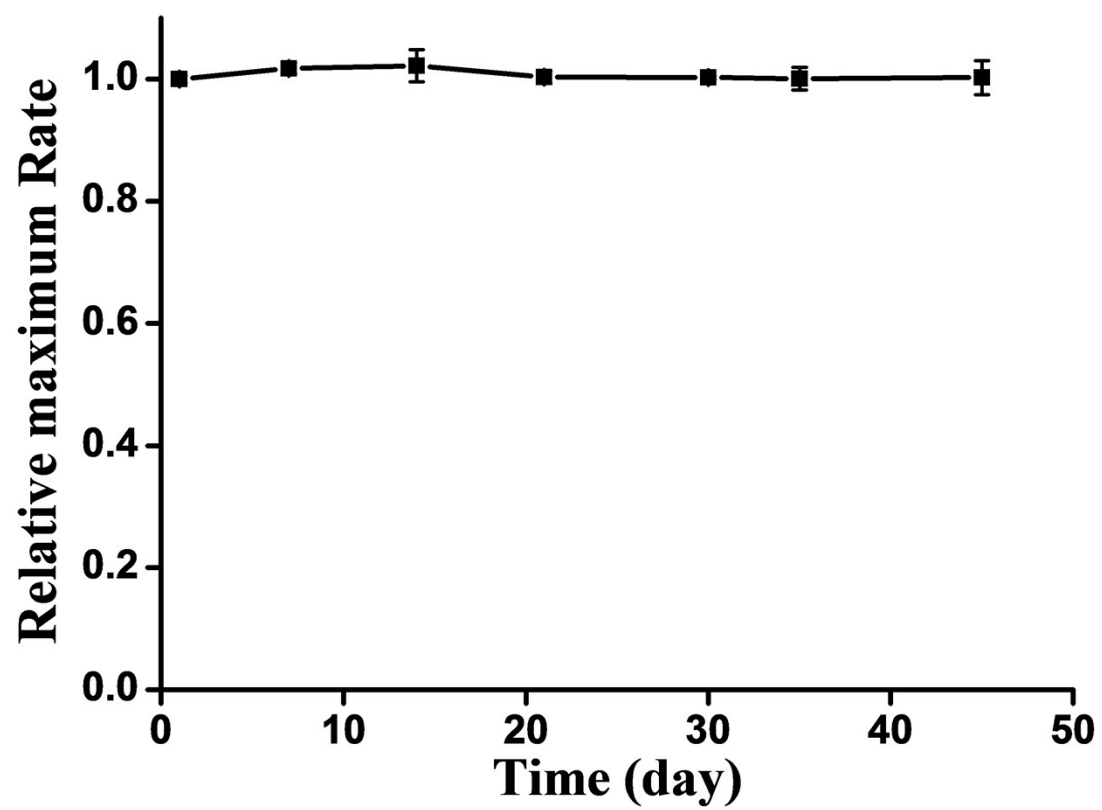


Figure S3. Storage stability of the paper-based biosensor.