

SUPPLEMENTARY INFORMATION

The impact of structure of graphene-based materials on removal of organophosphorus pesticides from water

Tamara Lazarević-Pašti^{a,*,} **Vladan Anićijević^{b,†}**, **Miloš Baljžović^c**, **Dragana Vasić Anićijević^a**, **Sanjin Gutić^d**, **Vesna Vasić^a**, **Natalia V. Skorodumova^{e,f}**, **Igor A. Pašti^{b,f}**

^a*University of Belgrade, Vinča Institute of Nuclear Sciences, Mike Petrovića Alasa 12-14, 11001 Vinča, Serbia*

^b*University of Belgrade – Faculty of Physical Chemistry, Studentski trg 12-16, 11158 Belgrade, Serbia*

^c*Laboratory for Micro and Nanotechnology, Paul Scherrer Institute, Villigen, Switzerland*

^d*University of Sarajevo, Faculty of Science, Department of Chemistry, Zmaja od Bosne 33-35, Sarajevo, Bosnia and Hercegovina*

^e*Department of Physics and Astronomy, Uppsala University, Box 516, 751 20 Uppsala, Sweden*

^f*Department of Materials Science and Engineering, School of Industrial Engineering and Management, KTH - Royal Institute of Technology, Brinellvägen 23, 100 44 Stockholm, Sweden*

+Authors with equal contribution

*Correspondence:

Dr. Tamara Lazarević-Pašti

Department of Physical Chemistry, Vinča Institute of Nuclear Sciences,

P. O. Box 522, 11001 Belgrade, Serbia.

Tel.: +381-11-2453-967, Fax: +381-11-2447-207.

E-mail address 1: tamara@vin.bg.ac.rs

E-mail address 2: lazarevictlj@yahoo.com

1. Batch adsorption experiments – PHASES OF THE EXPERIMENT

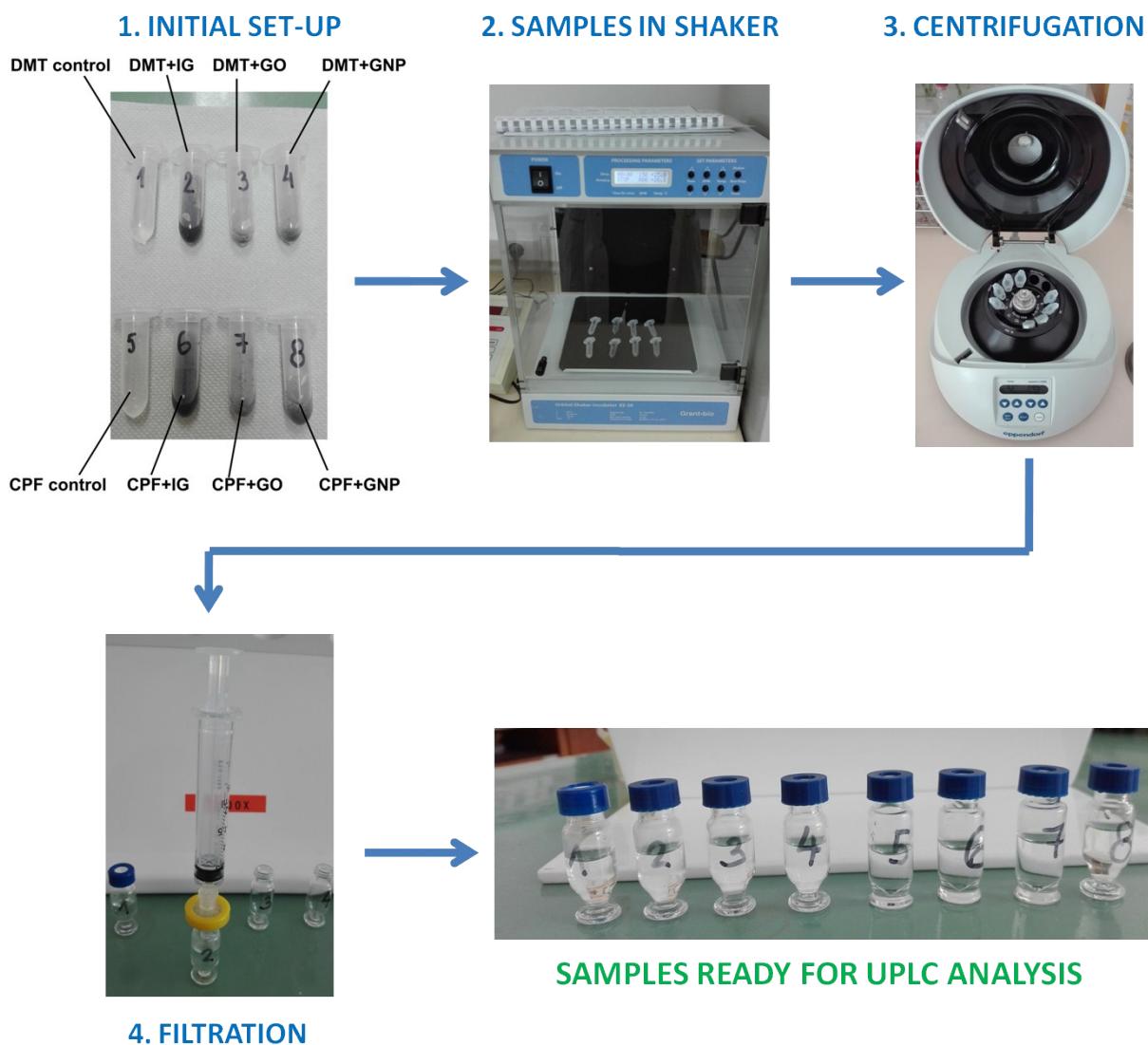
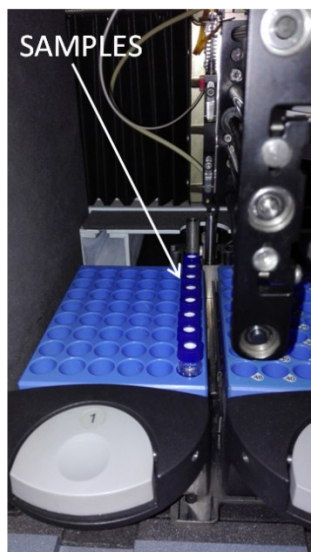


Figure S1. Phases of the batch adsorption experiments from mixing OPs and adsorbents to the samples ready for UPLC analysis (adsorbents removed). Single set of samples is shown for two OPs and three adsorbents.

**SAMPLES IN THE SAMPLE
MANAGER**



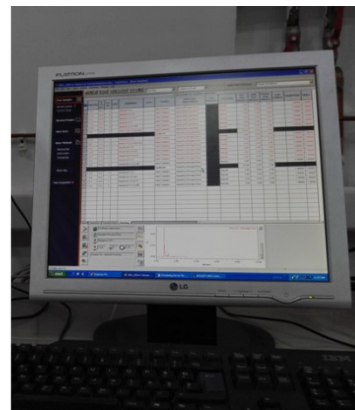
(a)

**ANALYSIS IN
PROGRESS**



(b)

**RESULTS
OBTAINED**



(c)

Figure S2. UPLC analysis of prepared samples (a – samples placed in the samples manager, b – analysis in progress, c – obtained chromatograms).