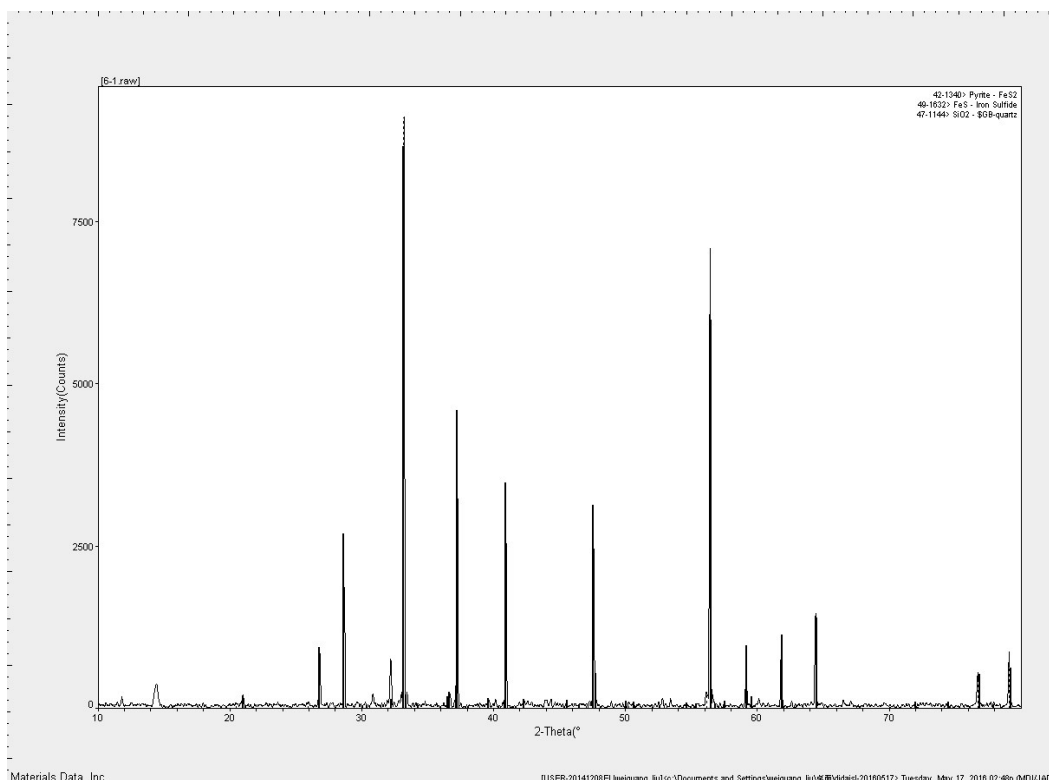
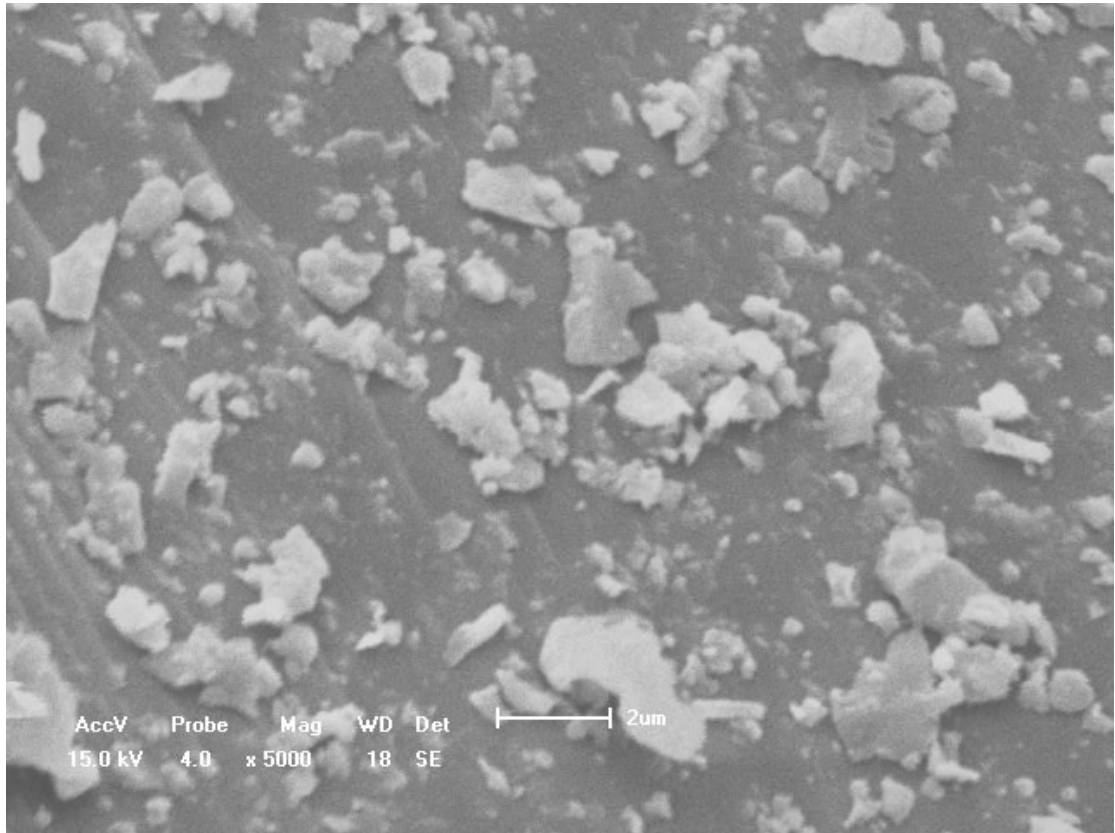


## Supporting Information

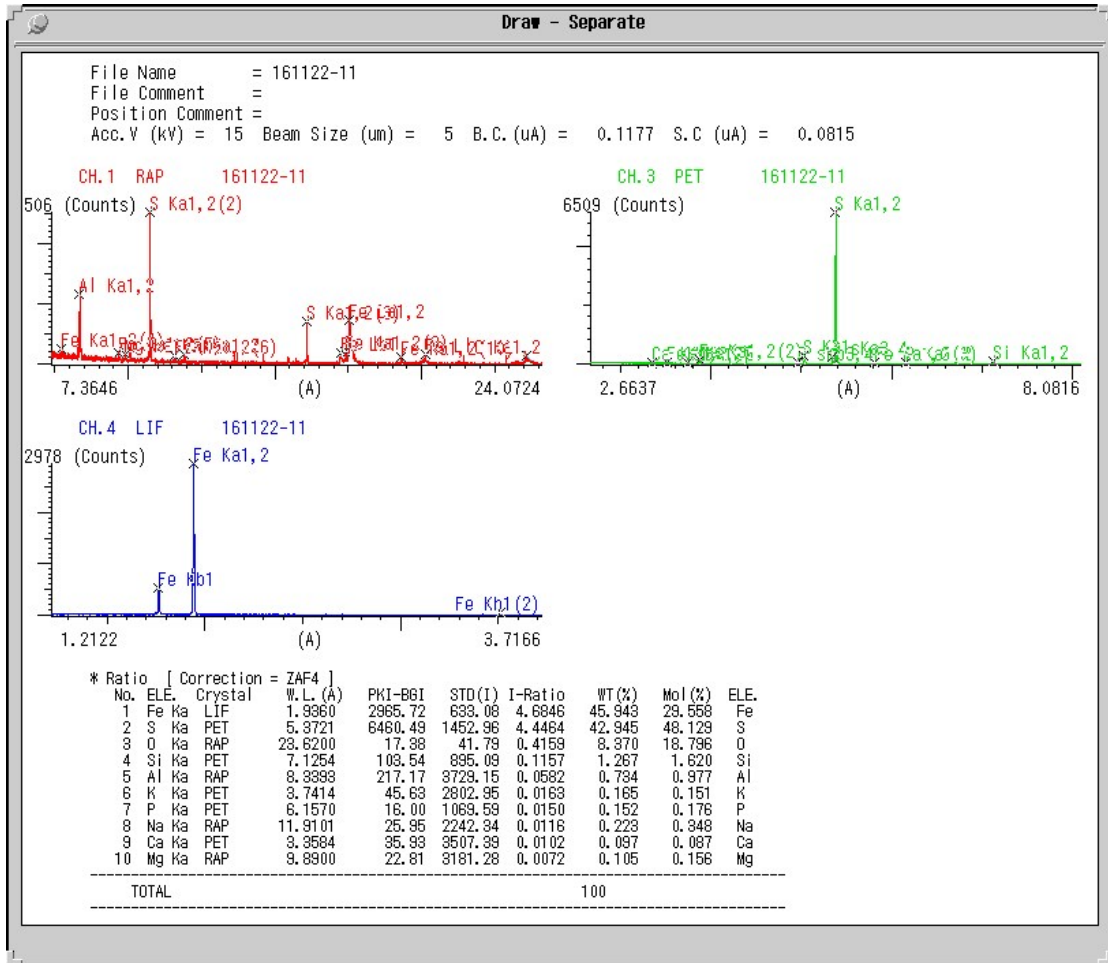


[6-1.raw]										Peak Search Report	
SCAN: 10.0/79.9983/0.01995/35.53(sec), Cu(40kV,40mA), I(max)=9123, 05-17-09 09:43											
PEAK: 17-pts/Parabolic Filter, Threshold=3.0, Cutoff=1.5%, BG=3/1.0, Peak-Top=Summit											
NOTE: Intensity = Counts, 2T(0)=0.0(°), Wavelength to Compute d-Spacing = 1.54056A(Cu/K-alpha1)											
#	2-Theta	d(A)	BG	Height	I%	Area	I%	FWHM			
1	20.453	4.3386	16	54	0.6	1483	2.8	0.466			
2	25.964	3.4289	13	73	0.8	959	1.8	0.223			
3	28.657	3.1124	11	1848	20.3	11635	22.2	0.107			
4	33.188	2.6972	23	9100	100.0	52453	100.0	0.098			
5	37.219	2.4138	15	3606	39.6	20614	39.3	0.097			
6	38.935	2.3113	18	51	0.6	827	1.6	0.275			
7	40.909	2.2042	65	3048	33.5	16615	31.7	0.092			
8	47.034	1.9304	30	34	0.4	1126	2.1	0.562			
9	47.572	1.9099	8	2612	28.7	15847	30.2	0.103			
10	50.230	1.8148	17	74	0.8	1292	2.5	0.296			
11	56.133	1.6372	14	224	2.5	4954	9.4	0.375			
12	56.412	1.6297	8	7083	77.8	44372	84.6	0.106			
13	59.146	1.5607	13	669	7.4	4682	8.9	0.119			
14	61.818	1.4996	11	1008	11.1	6601	12.6	0.111			
15	64.413	1.4452	23	1426	15.7	9875	18.8	0.117			
16	76.725	1.2411	11	528	5.8	5112	9.7	0.164			
17	79.082	1.2099	7	856	9.4	7018	13.4	0.139			

**S1: X-ray diffraction characterization of pyrite**



**S2: Scanning electron micrograph of the pyrite**



**S3: Electron probe microanalysis report of pyrite**