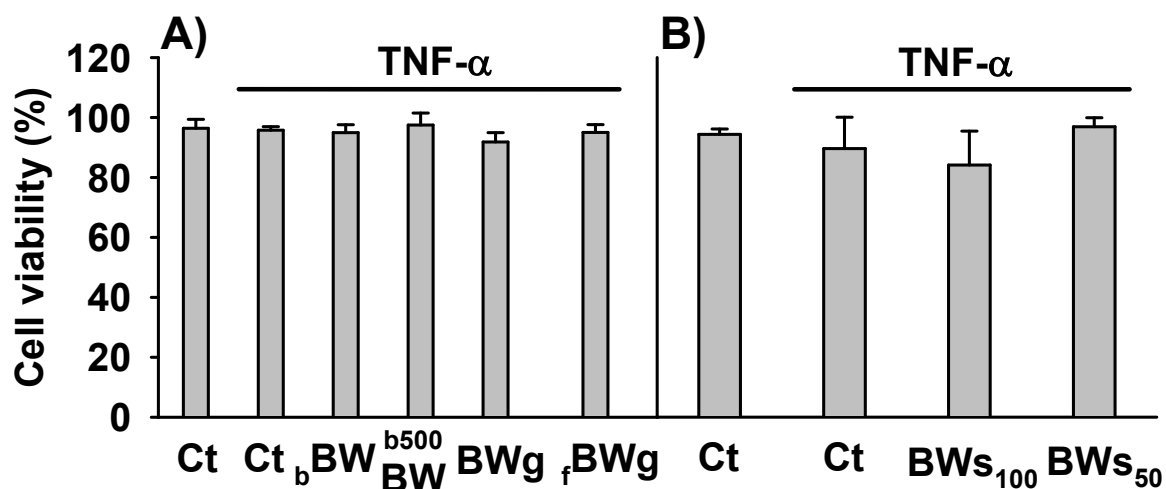


Supplementary Figure S1.



Effect of the different buckwheat (BW) products on myofibroblasts of colon cell viability using trypan blue exclusion assay after 48 h of treatment: cells co-treated with TNF- $\alpha$  (20 ng/mL) in the presence or absence of <sub>b</sub>BW, <sub>b500</sub>BW, BWg, <sub>f</sub>BWg (A), and BWs (B). The results show the percent of viable cells from three independent experiments (n = 3). Each experiment was performed in duplicates. **Abbreviations:** **Ct:** control digesta; **<sub>b</sub>BW:** bread baked from "BIO" wheat flour and roasted BW flour (50/50%); **<sub>b500</sub>BW:** bread baked from wheat flour type 500 and roasted BW flour (50/50%); **BWg:** roasted BW groats; **<sub>f</sub>BWg:** 'Tempeh' type product from dehulled roasted BW; **BWs<sub>100</sub>:** solution obtained from the digestion of 100 mg of BW sprouts.