

Fig. S1 1D ¹H NMR spectrum of samples EPS1 to EPS6 (from top to bottom). Spectrum acquired at a magnetic field of 600 MHz and at 298.0 K.

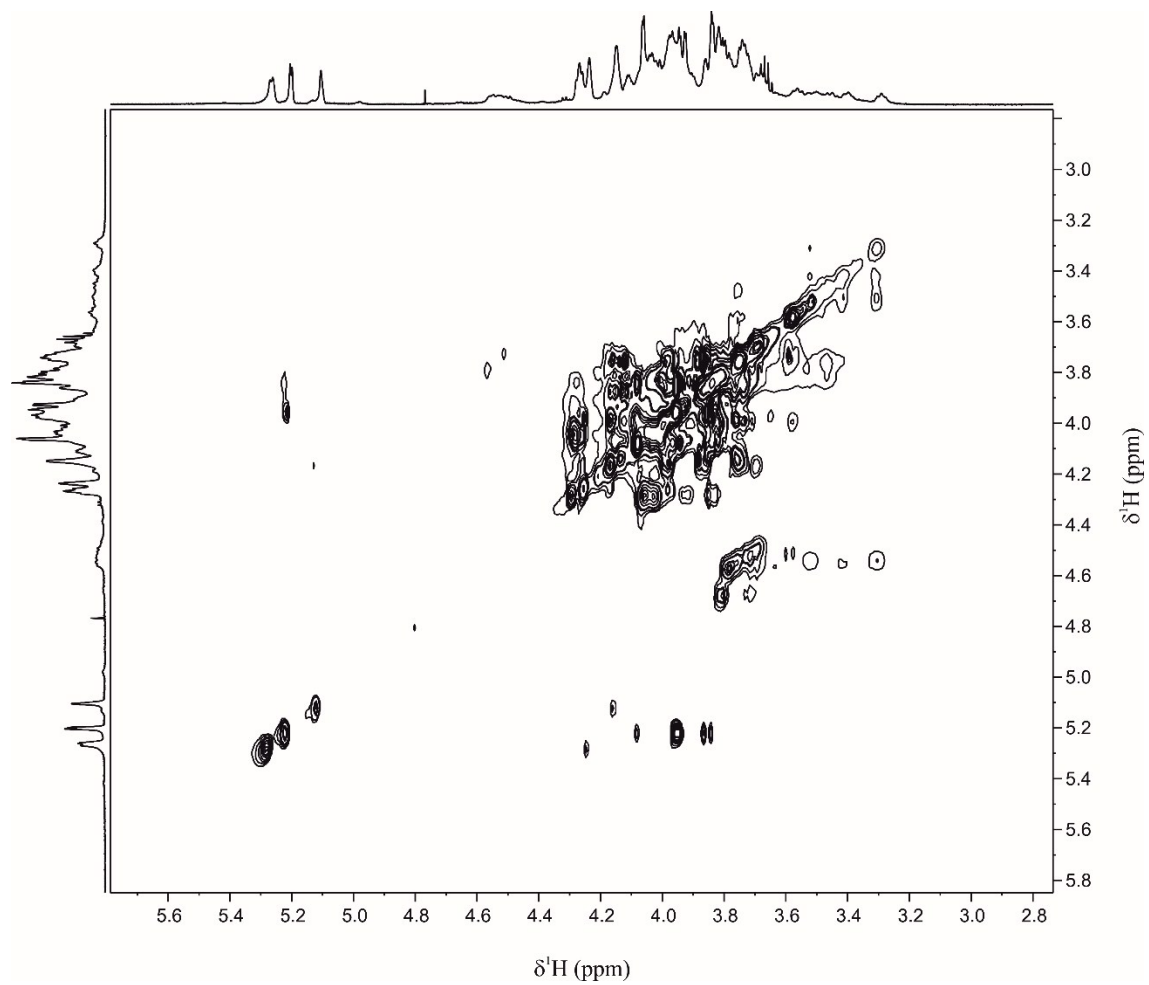


Fig. S2 ^1H - ^1H TOCSY spectrum of sample EPS6 acquired at a magnetic field of 600 MHz and at 298.0 K.

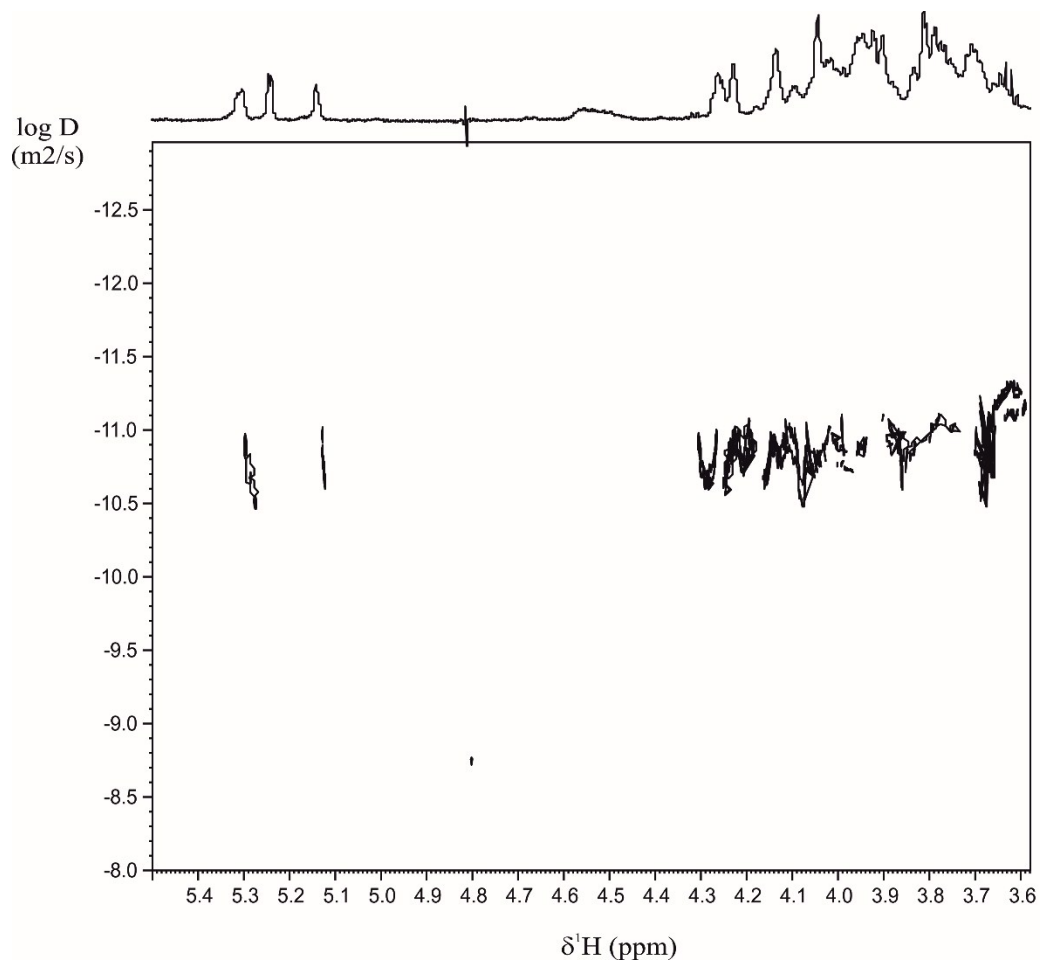


Fig. S3 2D DOSY spectrum of sample EPS6 acquired at a magnetic field of 600 MHz and at 298.0 K.