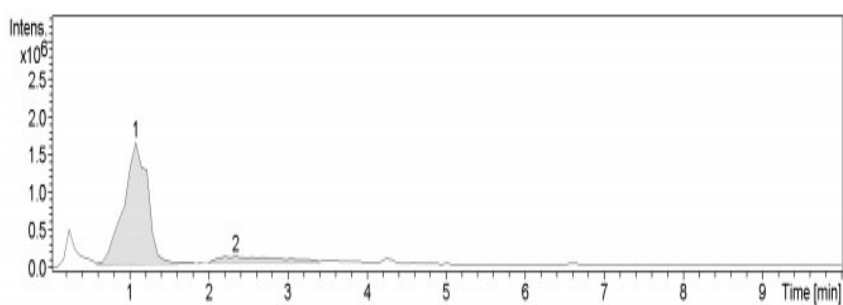


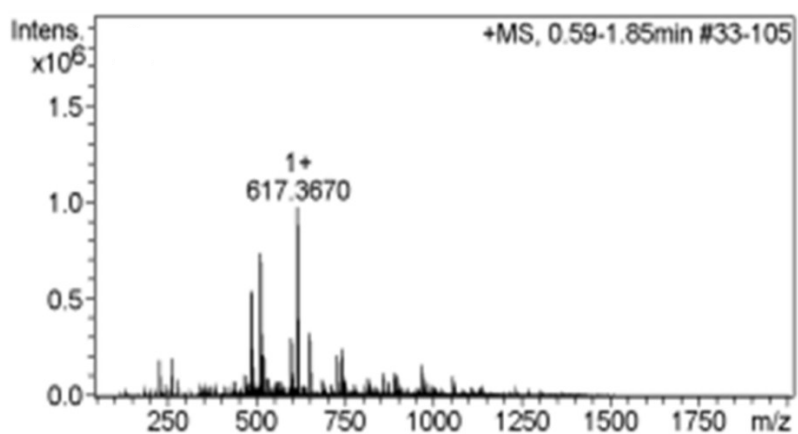
Support information

Figure 1. (A) Reverse-phase HPLC pattern of corn peptide fraction from C18-HPLC column. Mass spectrum of the corn peptide. (B): mass spectrum of the fraction appeared at peak 1 (1.08 min); (C): mass spectrum of the fraction appeared at peak 2 (2.34 min).

A



B



C

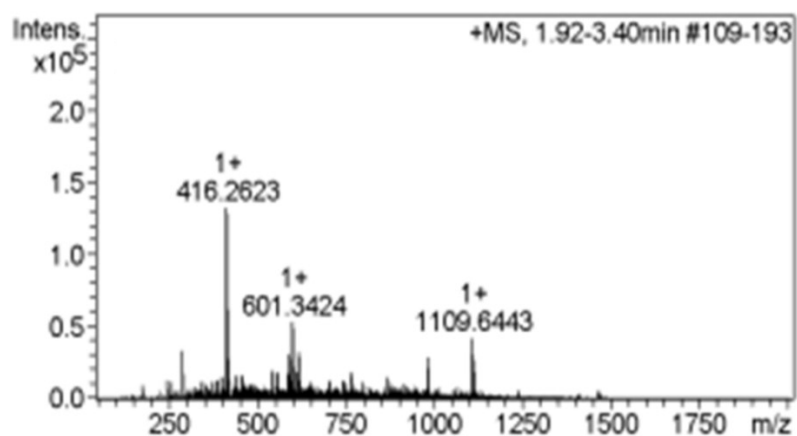


Table 1. The amine acid profile of corn protein peptide (relative content, %)

Amino Acid	Corn peptide (%)
Glu/Gln	22.52
Pro	13.48
Leu	12.86
Asp/Asn	7.05
Phe	5.35
Ala	5.24
Ser	4.69
Tyr	4.30
Ile	3.85
Cys	3.74
Val	3.56
Arg	3.32
Thr	3.04
His	2.28
Met	1.61
Lys	0.87