

Figure S1. HPLC analysis of raffinose in the supernatant of different strains cultured in GMM, including *Bifidobacterium pseudocatenulatum* B16, *Bifidobacterium longum* subsp. *longum* B15, *Enterococcus avium* E5, *Lactobacillus ruminis* A5 and *Streptococcus salivarius* B5. The peak at 7.6 min was assigned to raffinose. Raffinose solution was used as the control for each measurement.

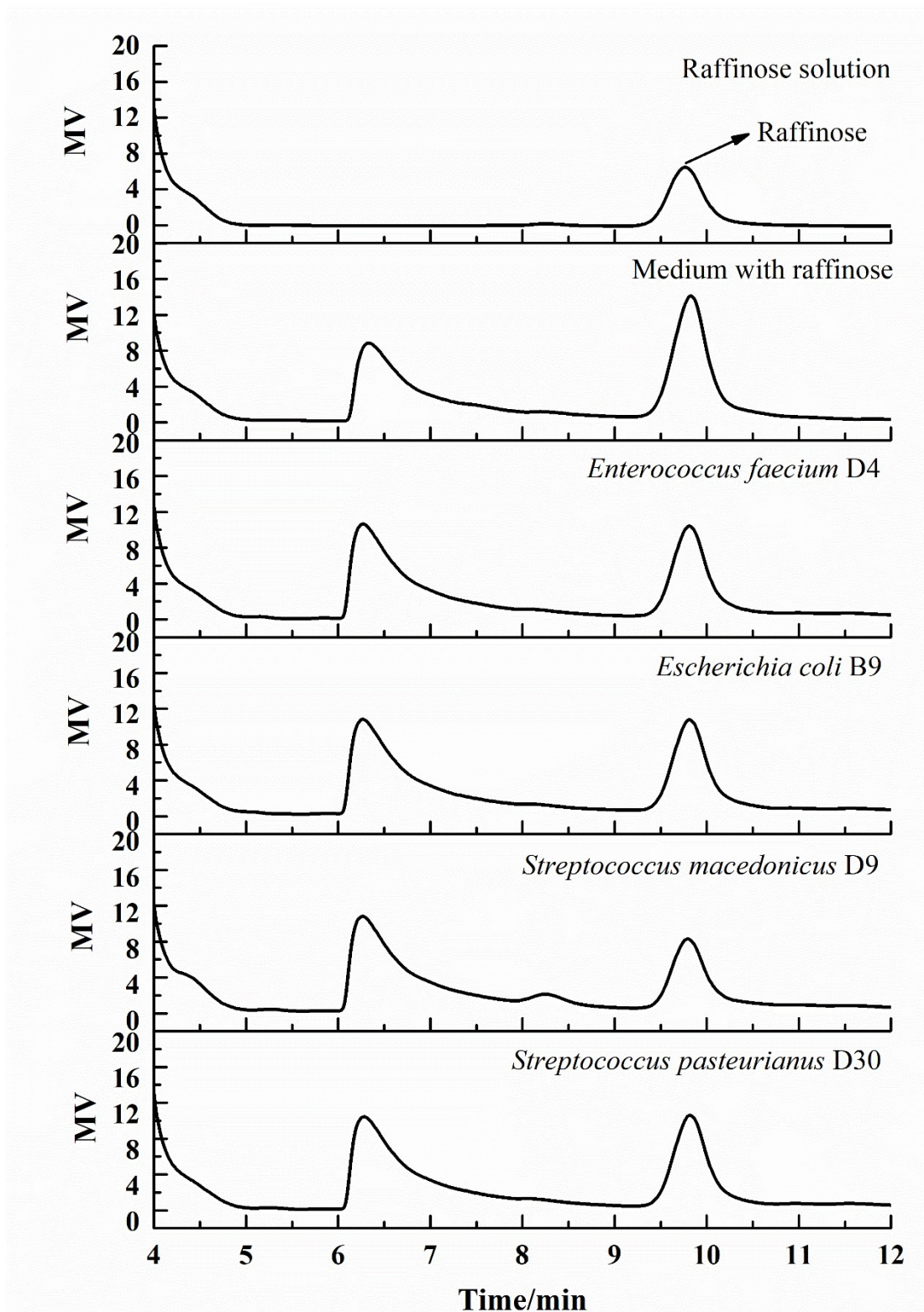


Figure S2. HPLC analysis of raffinose in the supernatant of different strains cultured in GMM, including *Enterococcus faecium* D4, *Escherichia coli* B9, *Streptococcus macedonicus* D9 and *Streptococcus pasteurianus* D30. The peak at 9.8 min was assigned to raffinose. Raffinose solution was used as the control for each measurement.

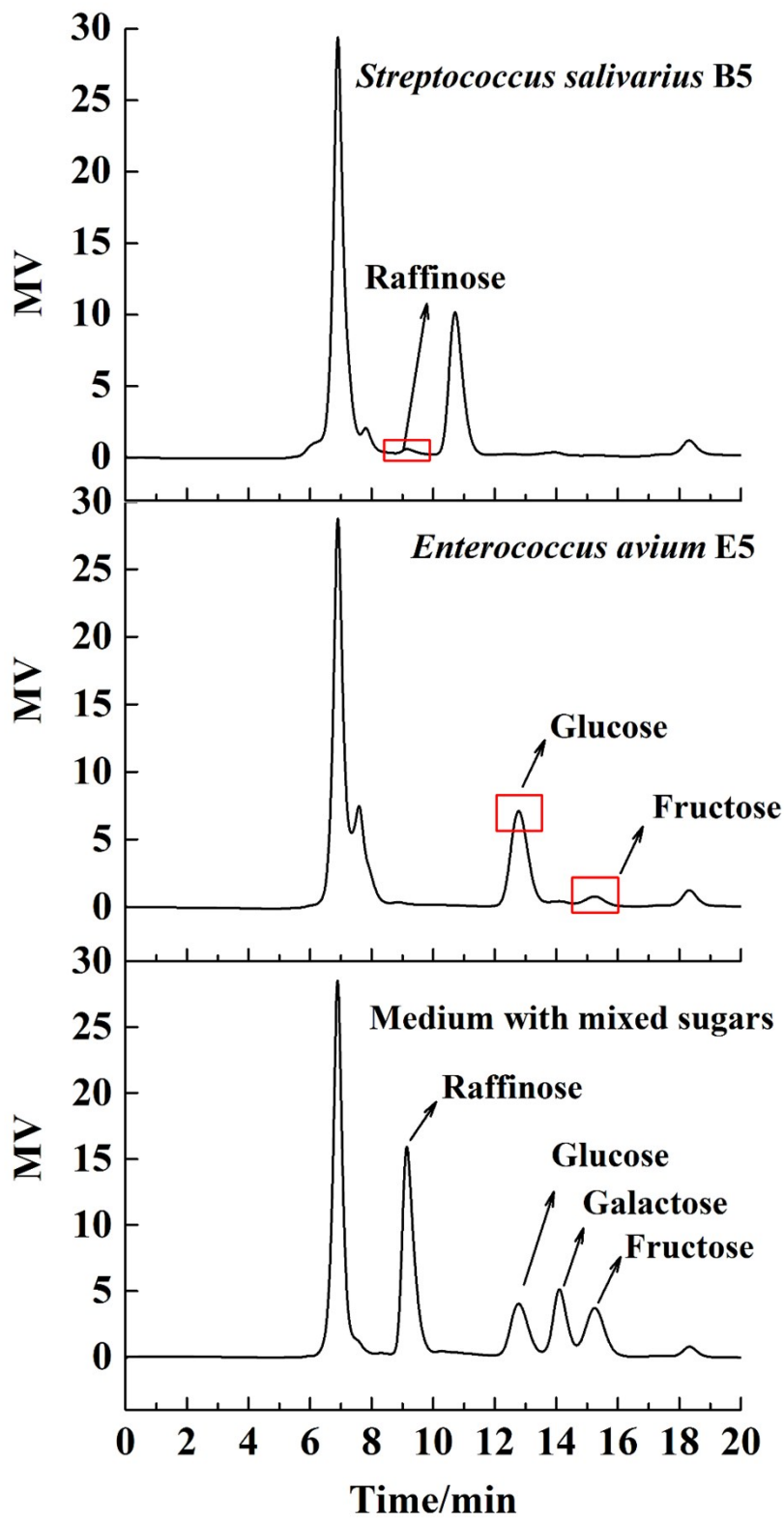


Figure S3. HPLC analysis of the sugar composition of the supernatant of *Enterococcus avium* E5 and *Streptococcus salivarius* B5.

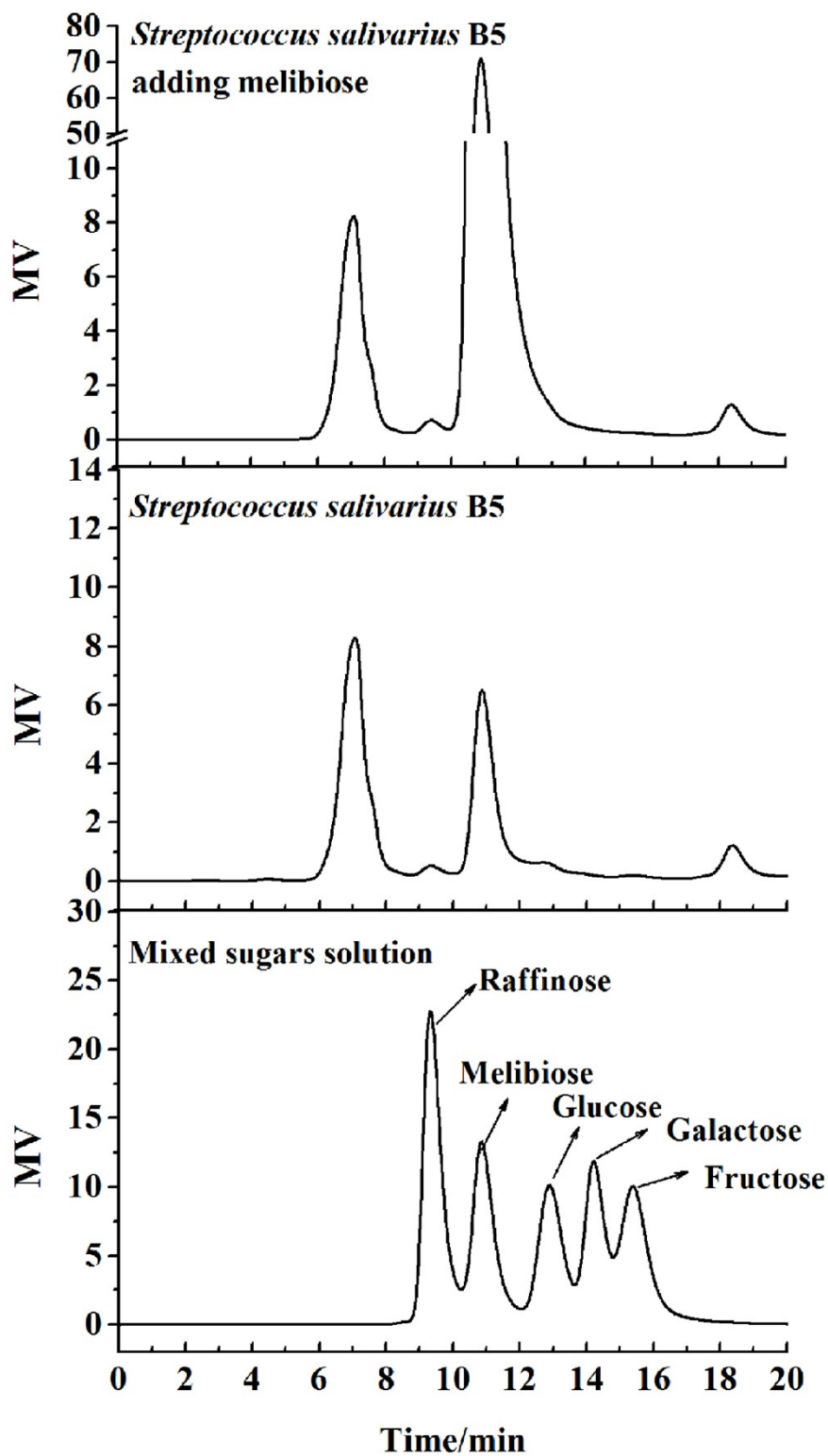


Figure S4. HPLC analysis of melibiose in the supernatant of *Streptococcus salivarius* B5.

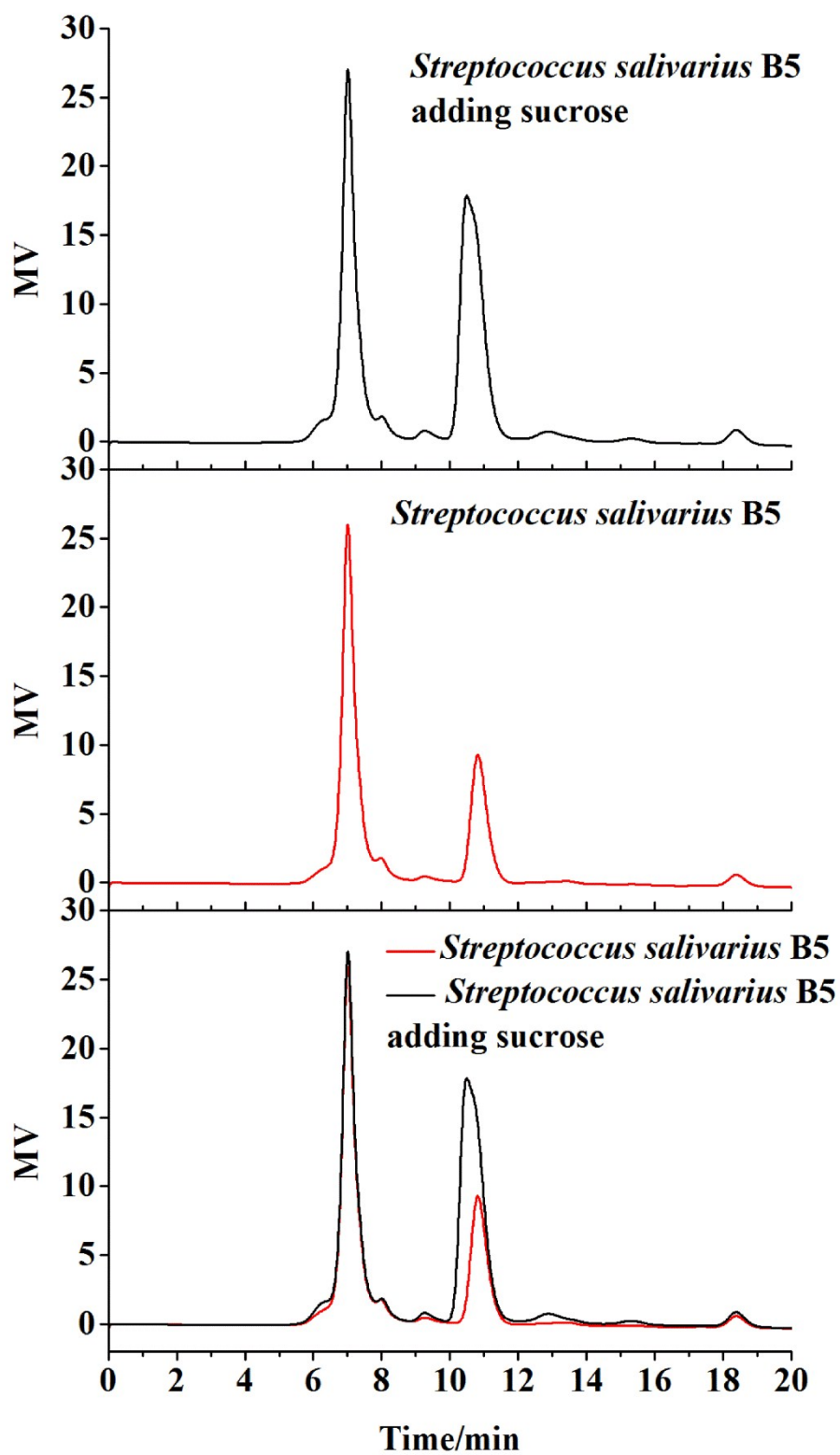


Figure S5. HPLC analysis of sucrose in the supernatant of *Streptococcus salivarius*

B5.