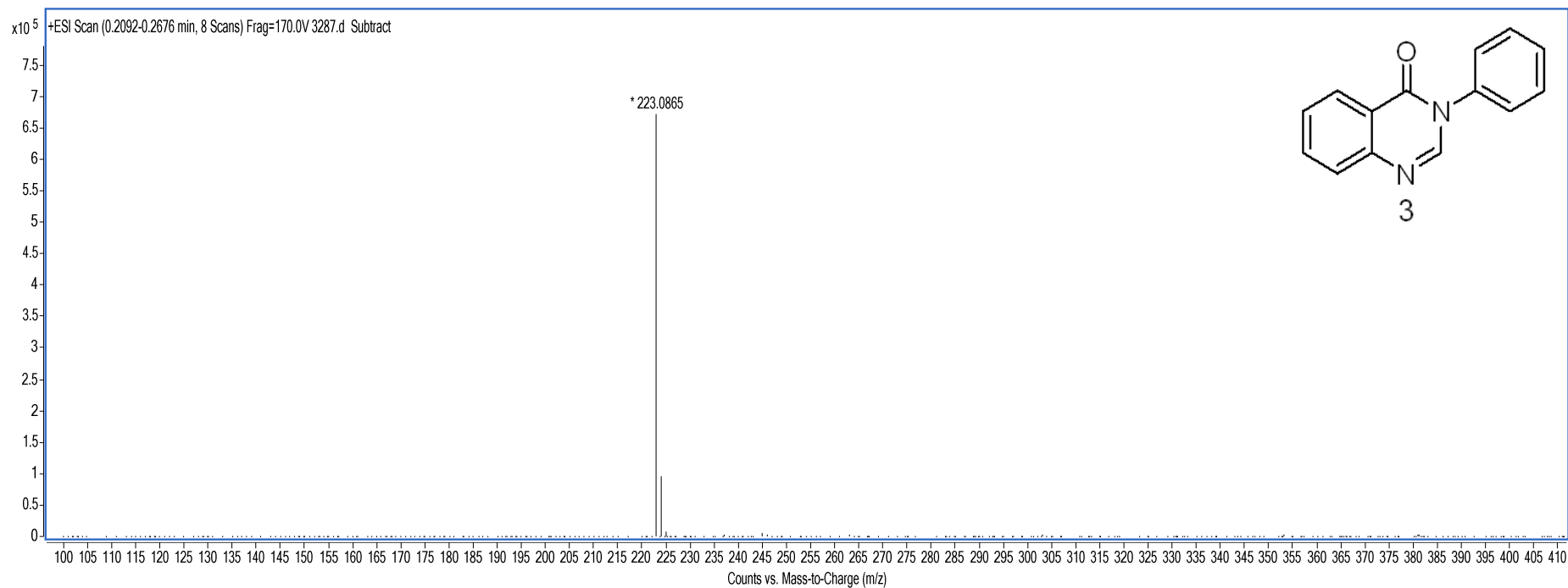


## Qualitative Analysis Report

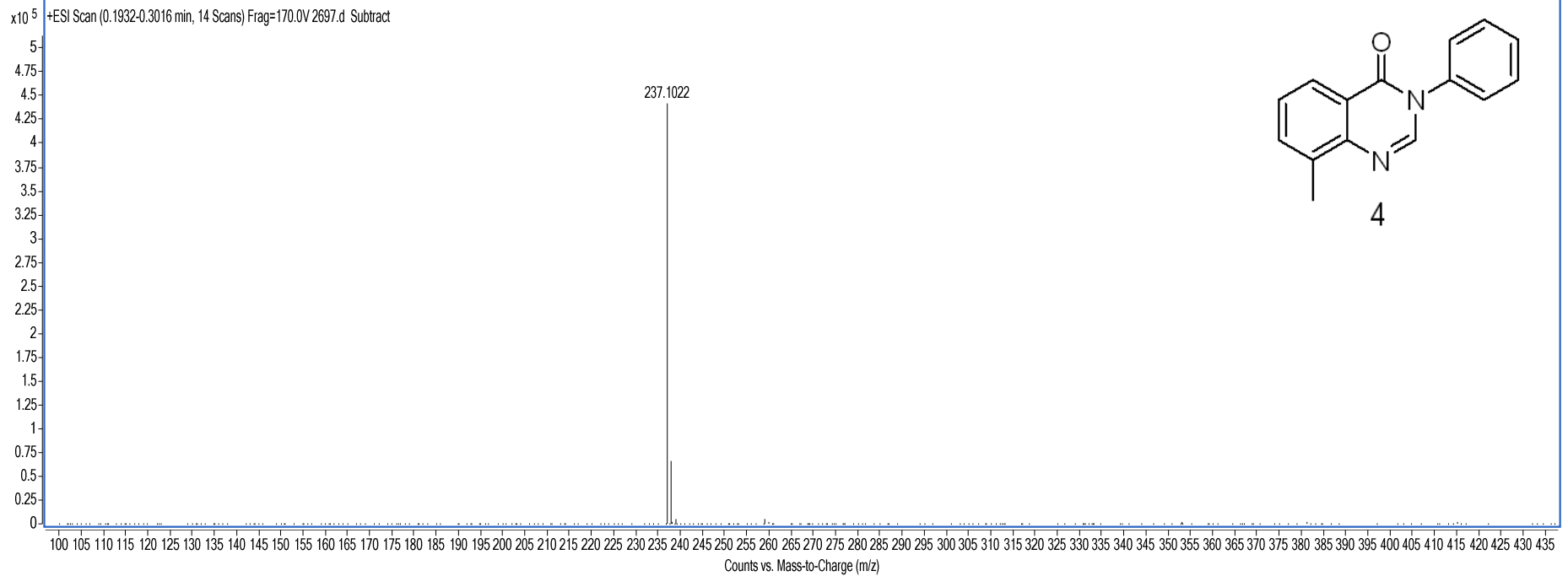
<b>Data Filename</b>	3287.d	<b>Sample Name</b>	YWJ7008
<b>Instrument Name</b>	TOF G6230A	<b>Acquired Time</b>	2017-07-24
<b>Acq Method</b>	YCL.M	<b>Acquired SW</b>	6200 series TOF/6500 series
<b>IRM Calibration Status</b>	Success		
<b>User Chromatograms</b>			



# Qualitative Analysis Report

**Data Filename** 2697.d  
**Instrument Name** TOF G6230A  
**Acq Method** YCL.M  
**IRM Calibration Status** Success  
**User Chromatograms**

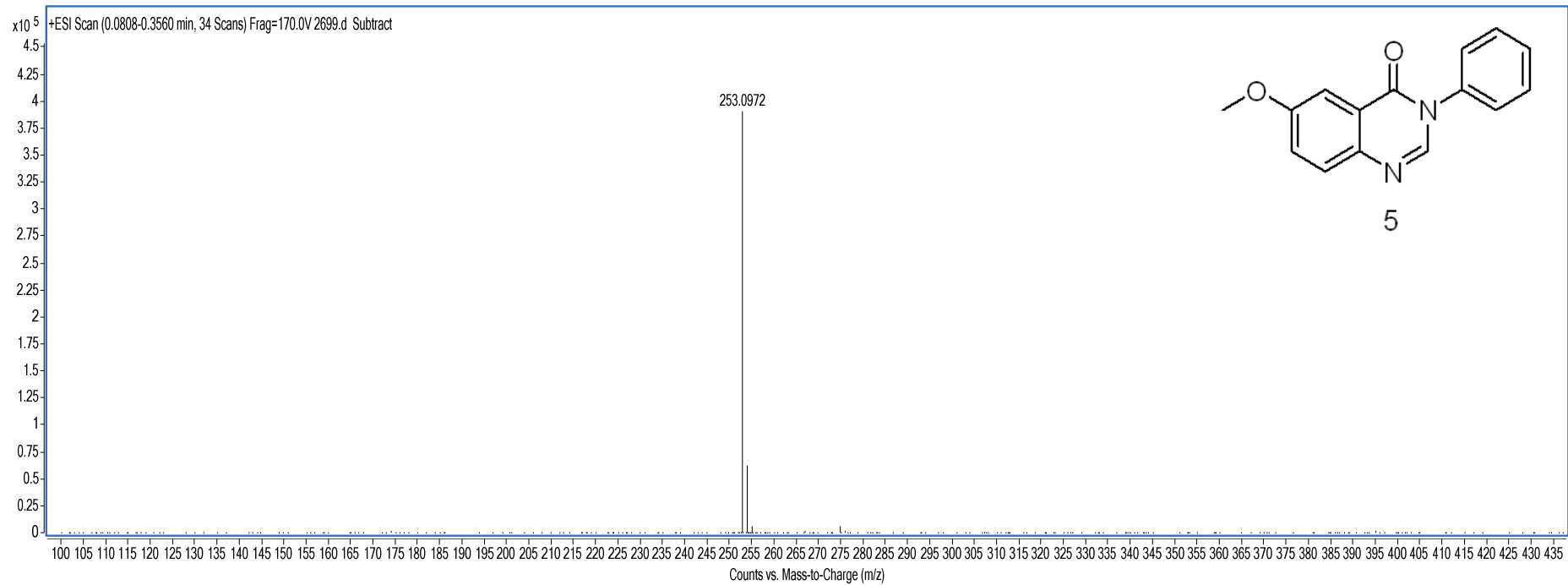
**Sample Name** YWJ1101  
**Acquired Time** 2017-06-26  
**Acquired SW** 6200 series TOF/6500 series



# Qualitative Analysis Report

**Data Filename** 2699.d  
**Instrument Name** TOF G6230A  
**Acq Method** YCL.M  
**IRM Calibration Status** Success  
**User Chromatograms**

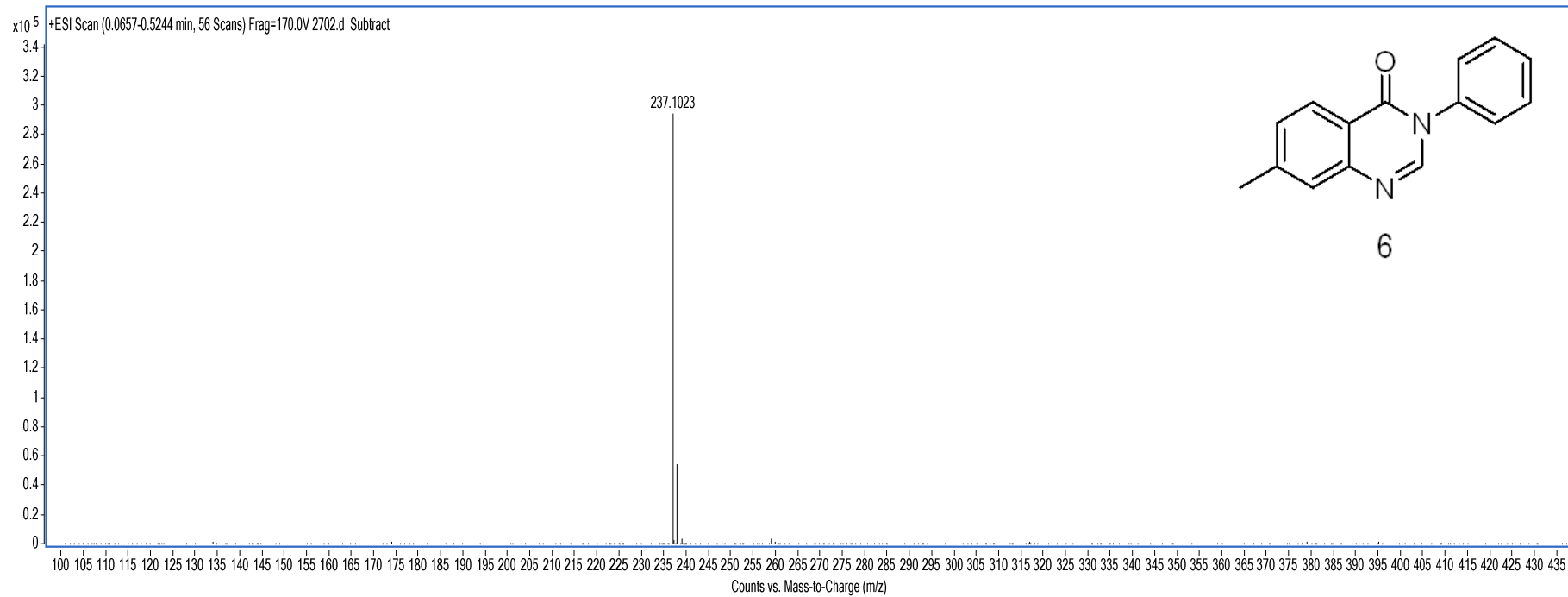
**Sample Name** YWJ1103  
**Acquired Time** 2017-06-26  
**Acquired SW** 6200 series TOF/6500 series



# Qualitative Analysis Report

**Data Filename** 2702.d  
**Instrument Name** TOF G6230A  
**Acq Method** YCL.M  
**IRM Calibration Status** Success  
**User Chromatograms**

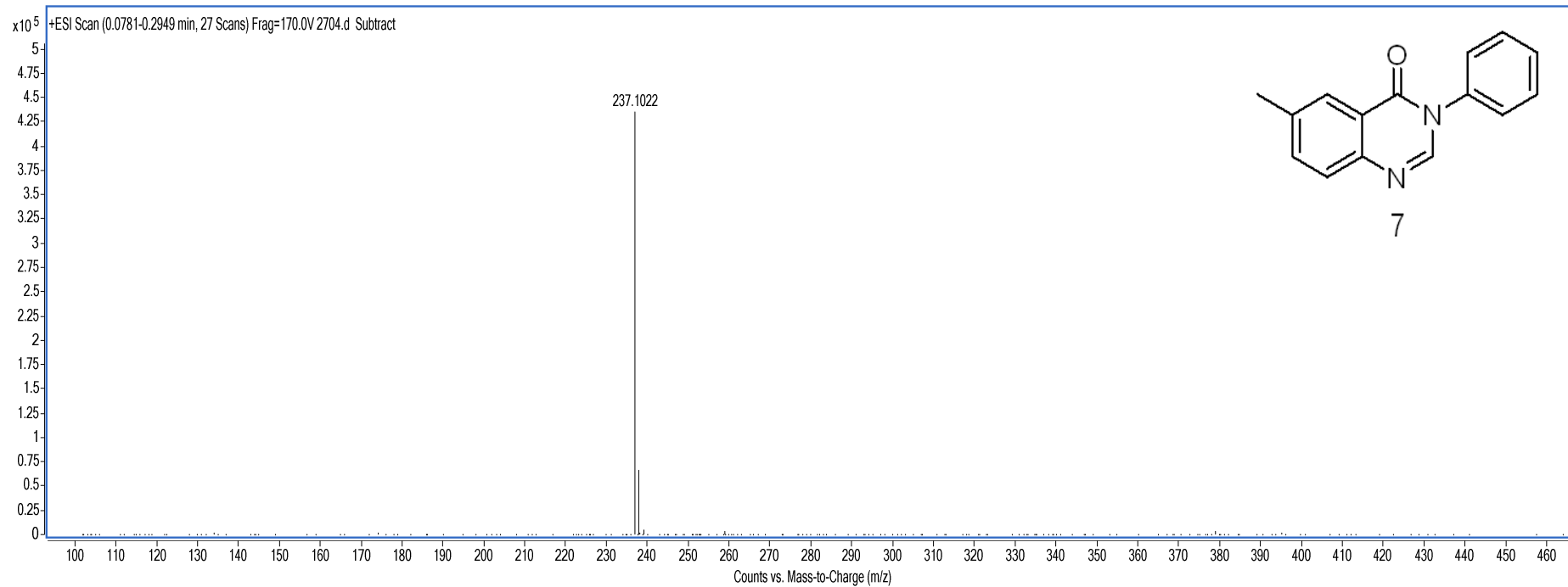
**Sample Name** YWJ1106  
**Acquired Time** 2017-06-26  
**Acquired SW** 6200 series TOF/6500 series



# Qualitative Analysis Report

**Data Filename** 2704.d  
**Instrument Name** TOF G6230A  
**Acq Method** YCL.M  
**IRM Calibration Status** Success  
**User Chromatograms**

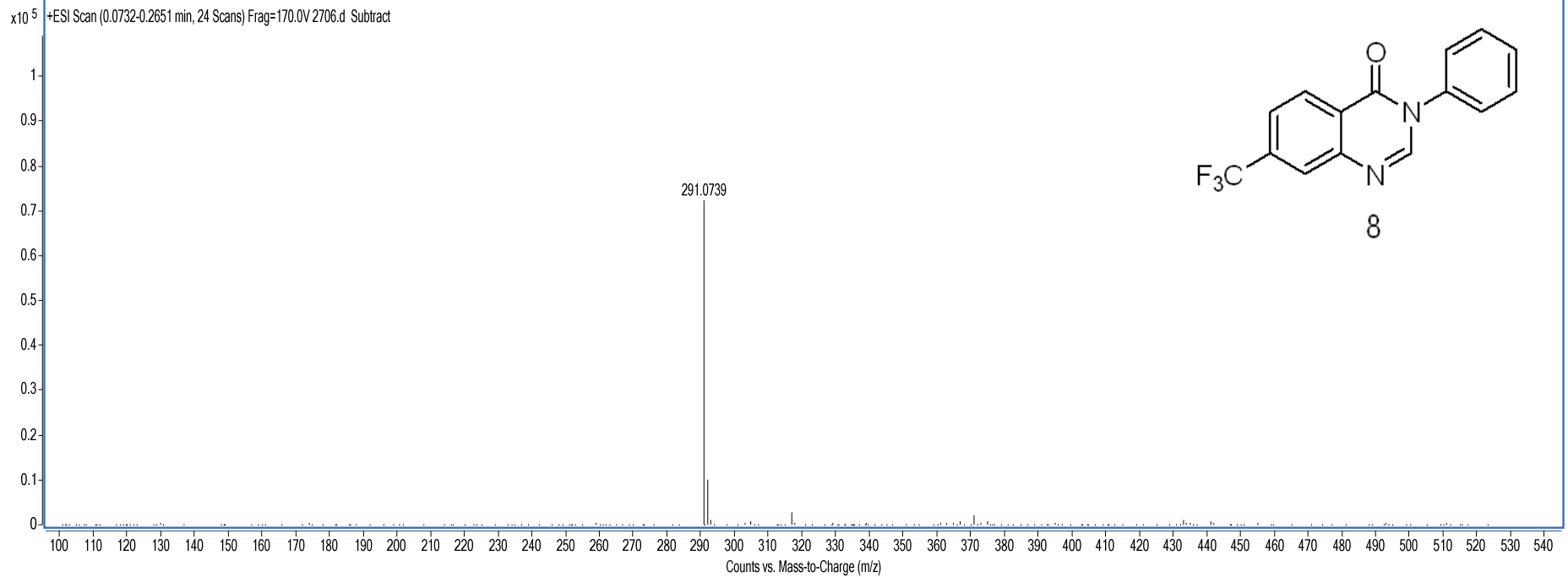
**Sample Name** YWJ1110  
**Acquired Time** 2017-06-26  
**Acquired SW** 6200 series TOF/6500 series



# Qualitative Analysis Report

**Data Filename** 2706.d  
**Instrument Name** TOF G6230A  
**Acq Method** YCL.M  
**IRM Calibration Status** Success  
**User Chromatograms**

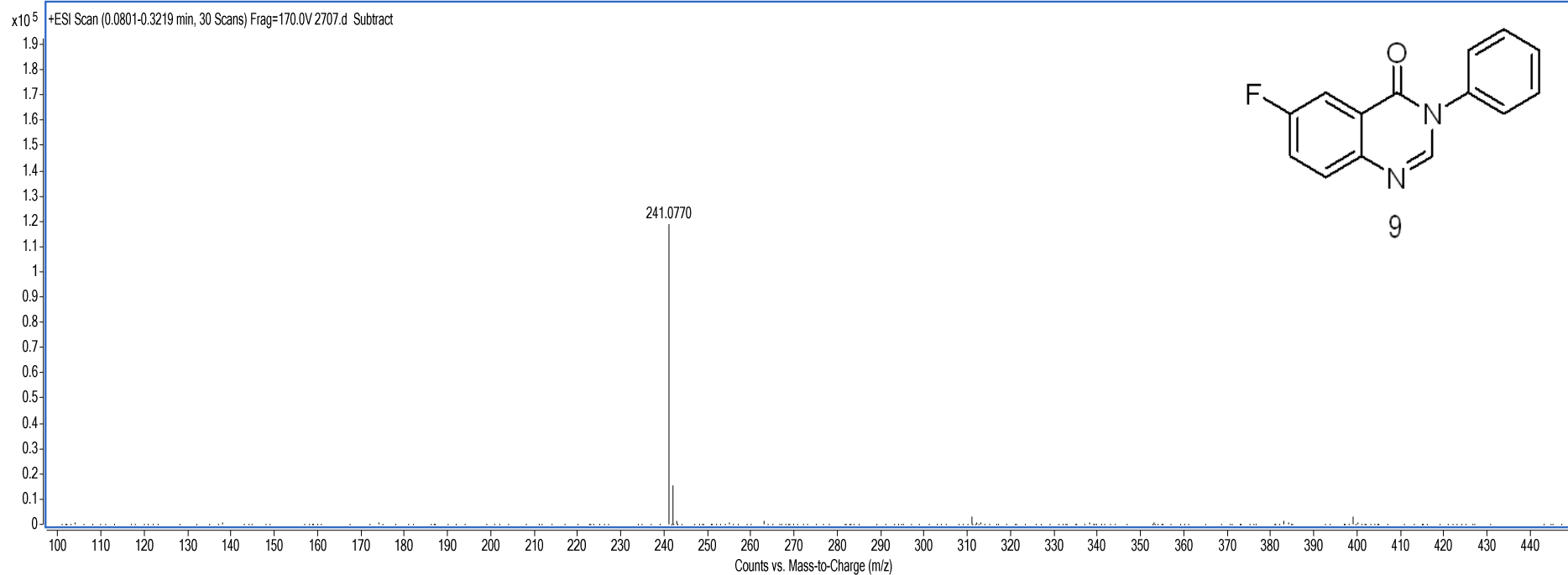
**Sample Name** YWJ1127  
**Acquired Time** 2017-06-26  
**Acquired SW** 6200 series TOF/6500 series



# Qualitative Analysis Report

**Data Filename** 2707.d  
**Instrument Name** TOF G6230A  
**Acq Method** YCL.M  
**IRM Calibration Status** Success  
**User Chromatograms**

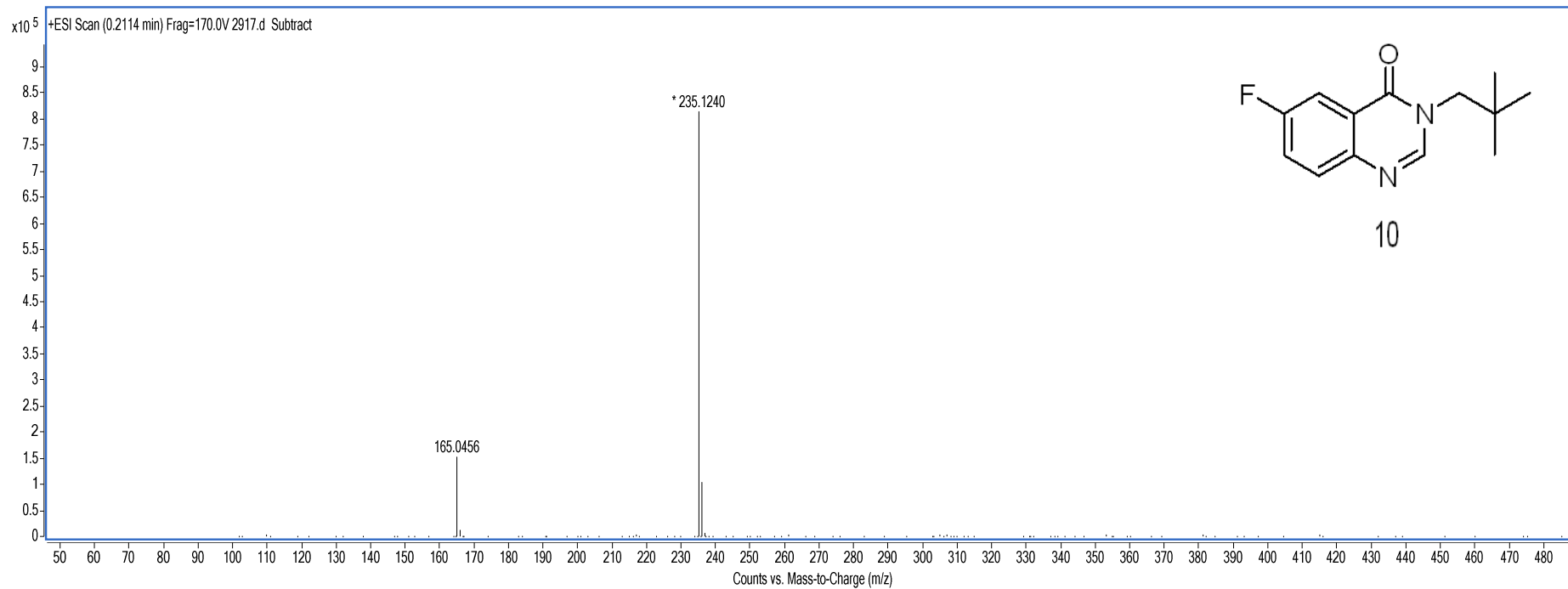
**Sample Name** YWJ1114  
**Acquired Time** 2017-06-26  
**Acquired SW** 6200 series TOF/6500 series



# Qualitative Analysis Report

**Data Filename** 2917.d  
**Instrument Name** TOF G6230A  
**Acq Method** YCL.M  
**IRM Calibration Status** Success  
**User Chromatograms**

**Sample Name** YWJ1131  
**Acquired Time** 2017-07-07  
**Acquired SW** 6200 series TOF/6500 series

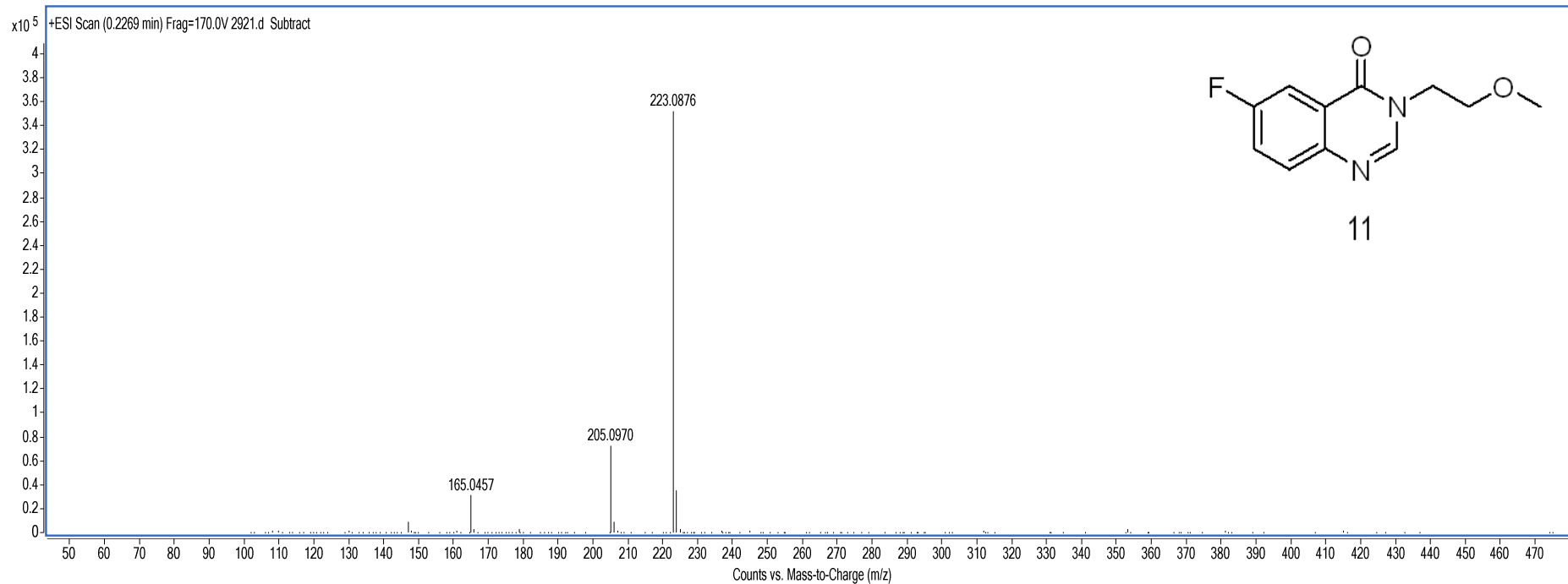




# Qualitative Analysis Report

**Data Filename** 2921.d  
**Instrument Name** TOF G6230A  
**Acq Method** YCL.M  
**IRM Calibration Status** Success  
**User Chromatograms**

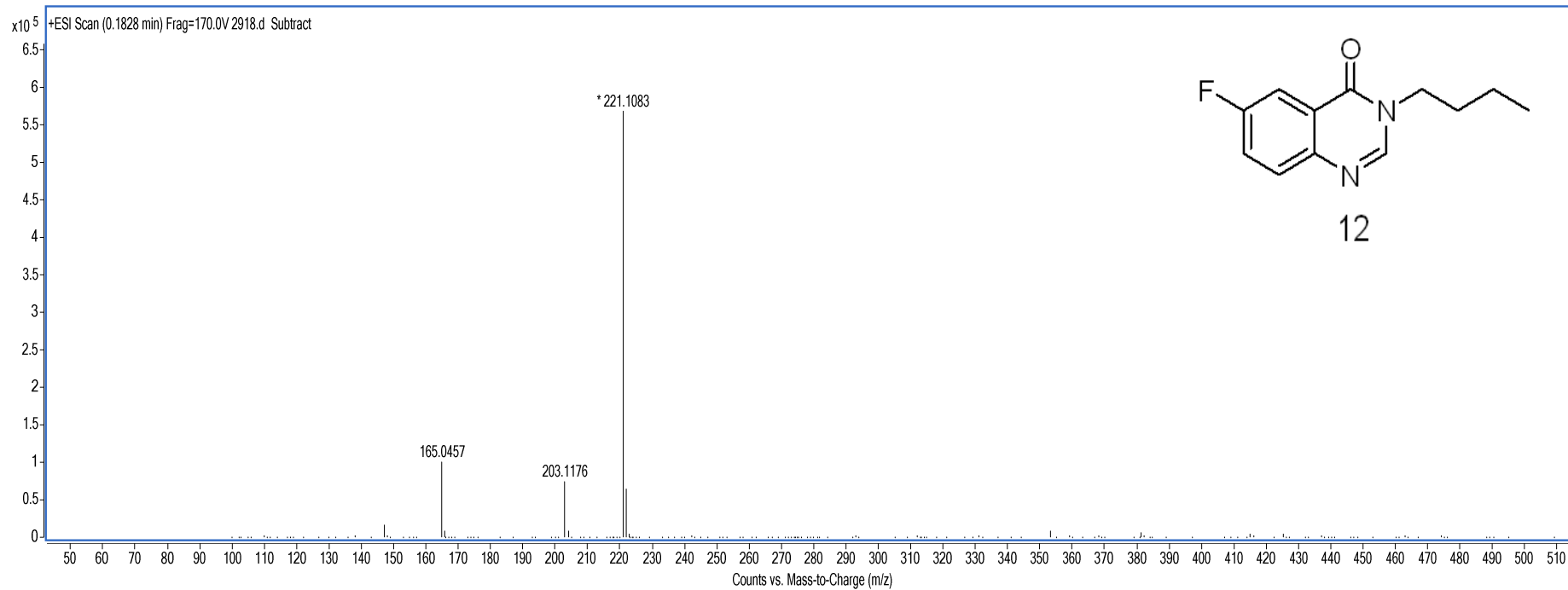
**Sample Name** YWJ1141  
**Acquired Time** 2017-07-07  
**Acquired SW** 6200 series TOF/6500 series



# Qualitative Analysis Report

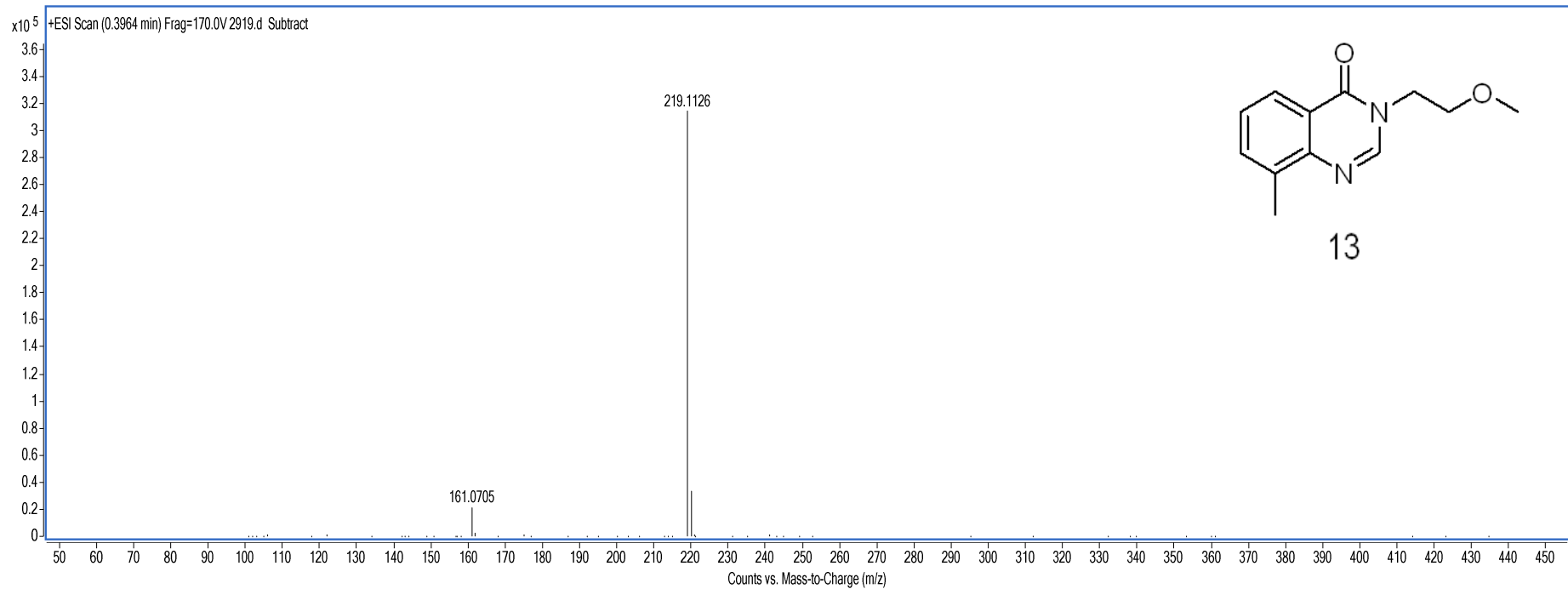
**Data Filename** 2918.d  
**Instrument Name** TOF G6230A  
**Acq Method** YCL.M  
**IRM Calibration Status** Success  
**User Chromatograms**

**Sample Name** YWJ1136  
**Acquired Time** 2017-07-07  
**Acquired SW** 6200 series TOF/6500 series



# Qualitative Analysis Report

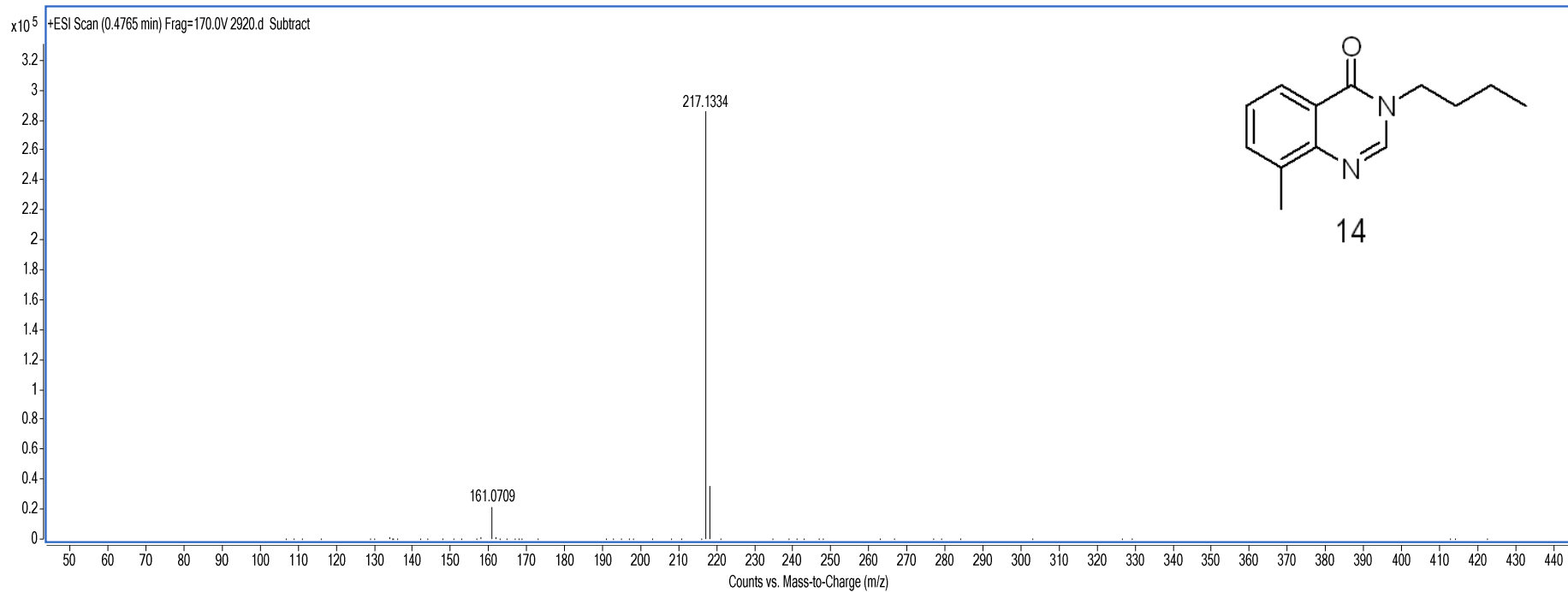
<b>Data Filename</b>	2919.d	<b>Sample Name</b>	YWJ1139
<b>Instrument Name</b>	TOF G6230A	<b>Acquired Time</b>	2017-07-07
<b>Acq Method</b>	YCL.M	<b>Acquired SW</b>	6200 series TOF/6500 series
<b>IRM Calibration Status</b>	Success		
<b>User Chromatograms</b>			



# Qualitative Analysis Report

**Data Filename** 2920.d  
**Instrument Name** TOF G6230A  
**Acq Method** YCL.M  
**IRM Calibration Status** Success  
**User Chromatograms**

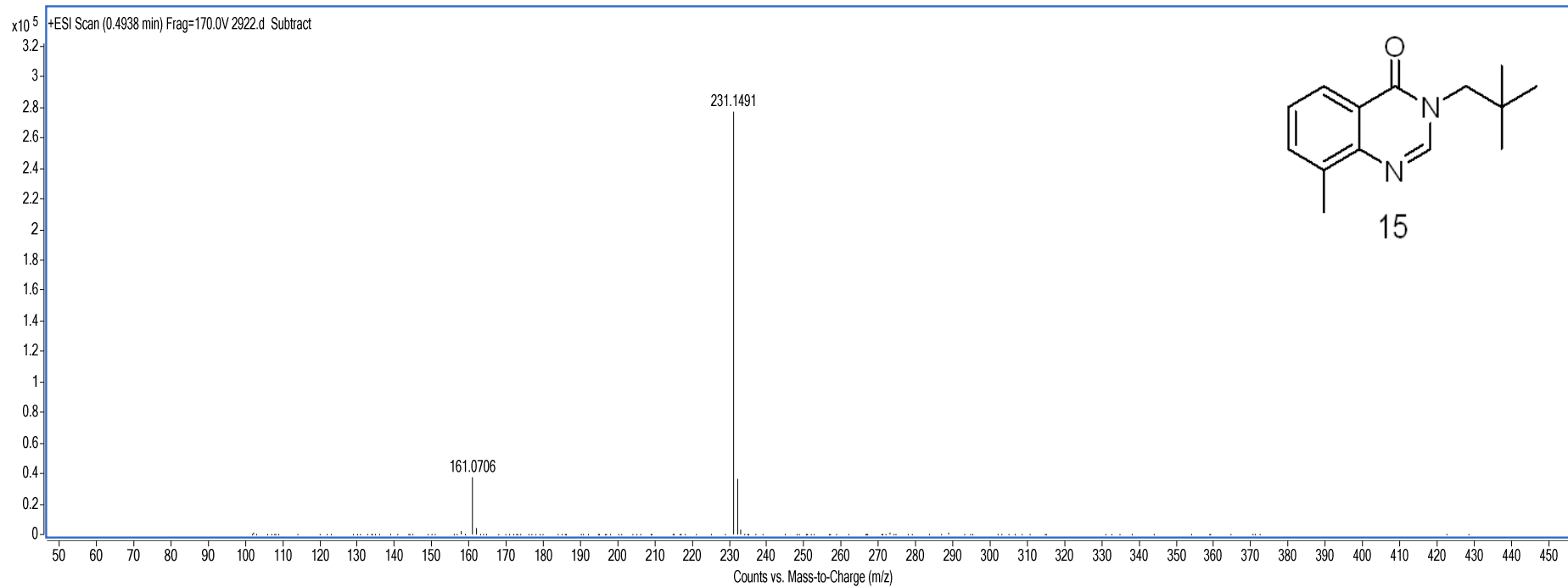
**Sample Name** YWJ1140  
**Acquired Time** 2017-07-07  
**Acquired SW** 6200 series TOF/6500 series



# Qualitative Analysis Report

**Data Filename** 2922.d  
**Instrument Name** TOF G6230A  
**Acq Method** YCL.M  
**IRM Calibration Status** Success  
**User Chromatograms**

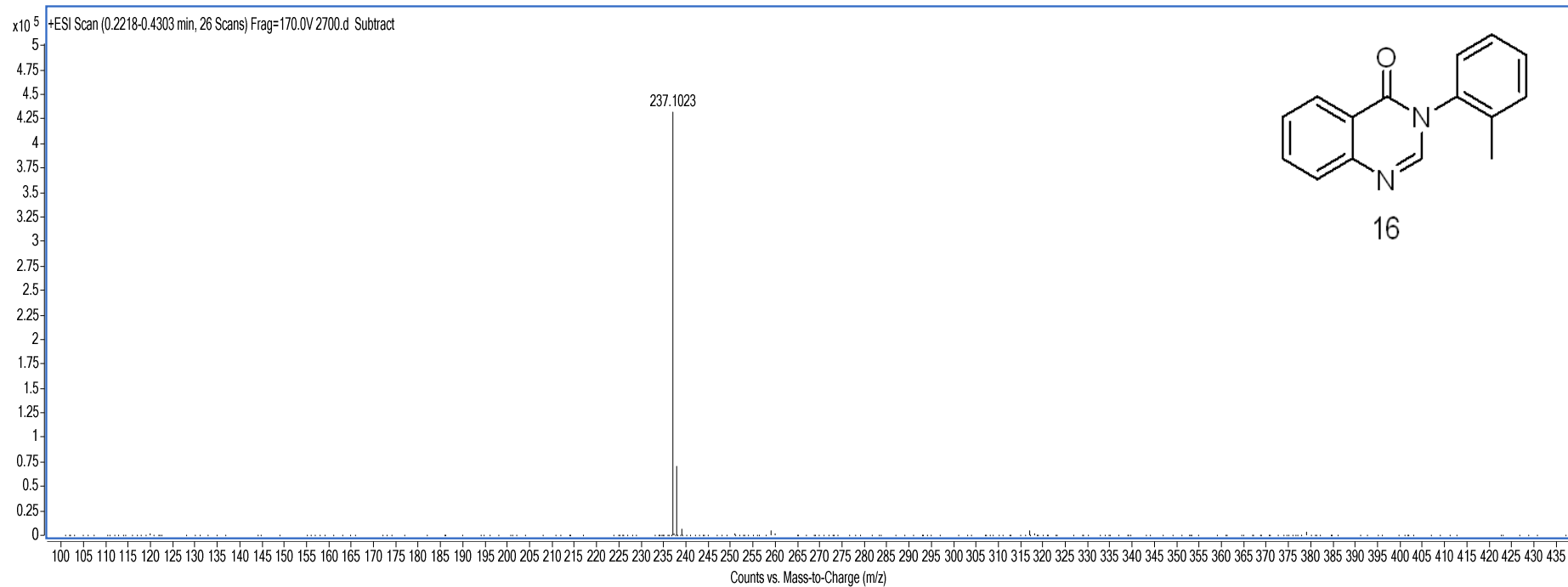
**Sample Name** YWJ1142  
**Acquired Time** 2017-07-07  
**Acquired SW** 6200 series TOF/6500 series



# Qualitative Analysis Report

**Data Filename** 2700.d  
**Instrument Name** TOF G6230A  
**Acq Method** YCL.M  
**IRM Calibration Status** Success  
**User Chromatograms**

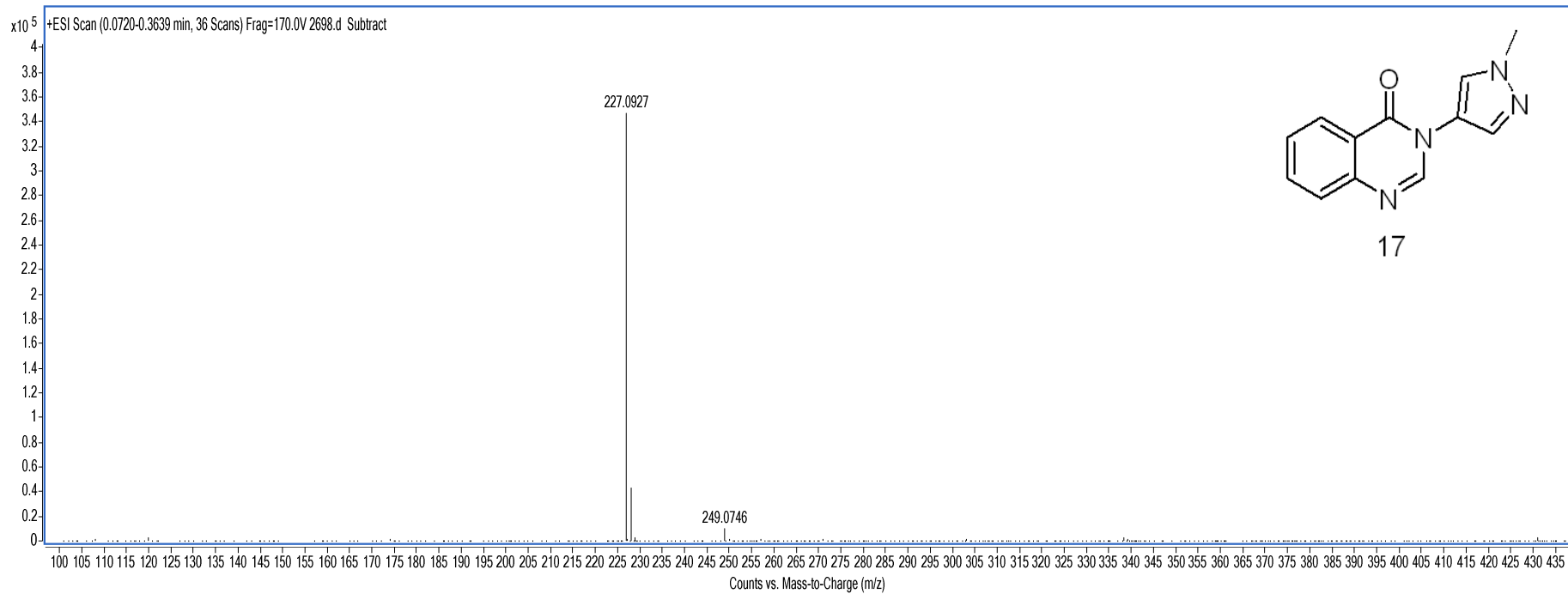
**Sample Name** YWJ1104  
**Acquired Time** 2017-06-26  
**Acquired SW** 6200 series TOF/6500 series



# Qualitative Analysis Report

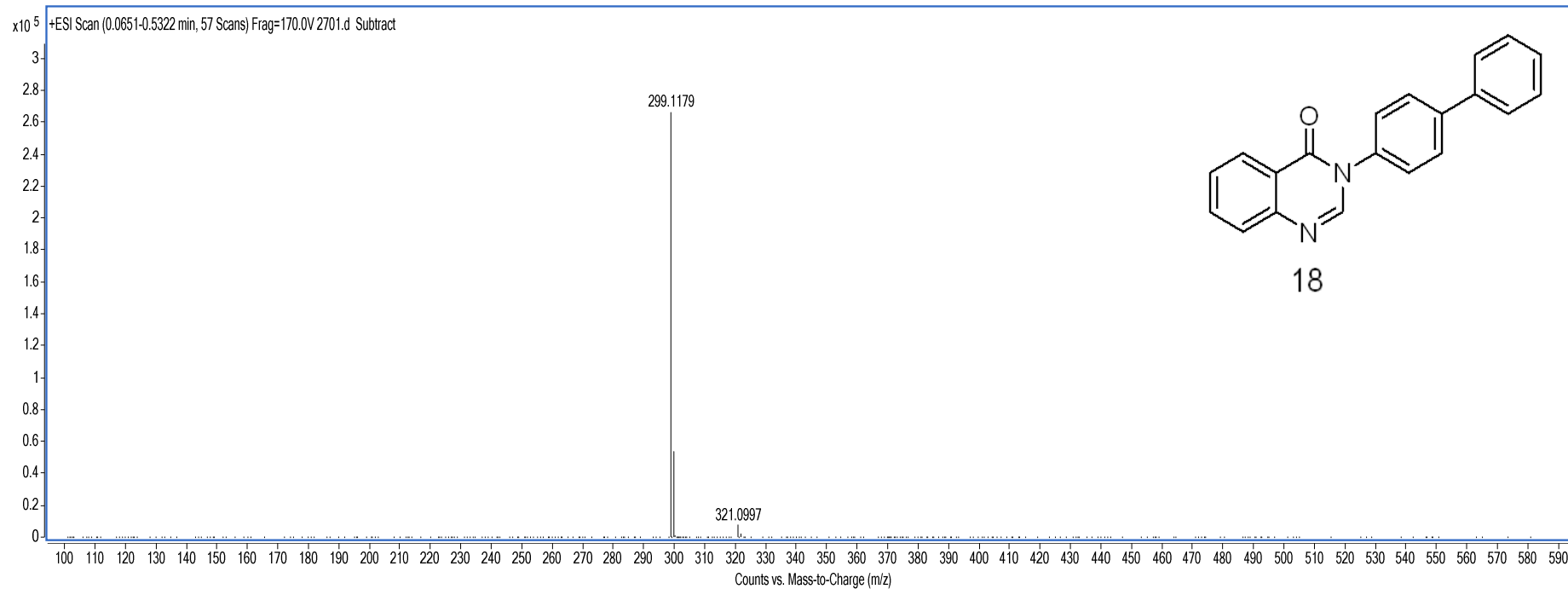
**Data Filename** 2698.d  
**Instrument Name** TOF G6230A  
**Acq Method** YCL.M  
**IRM Calibration Status** Success  
**User Chromatograms**

**Sample Name** YWJ1102  
**Acquired Time** 2017-06-26  
**Acquired SW** 6200 series TOF/6500 series



# Qualitative Analysis Report

<b>Data Filename</b>	2701.d	<b>Sample Name</b>	YWJ1105
<b>Instrument Name</b>	TOF G6230A	<b>Acquired Time</b>	2017-06-26
<b>Acq Method</b>	YCL.M	<b>Acquired SW</b>	6200 series TOF/6500 series
<b>IRM Calibration Status</b>	Success		
<b>User Chromatograms</b>			

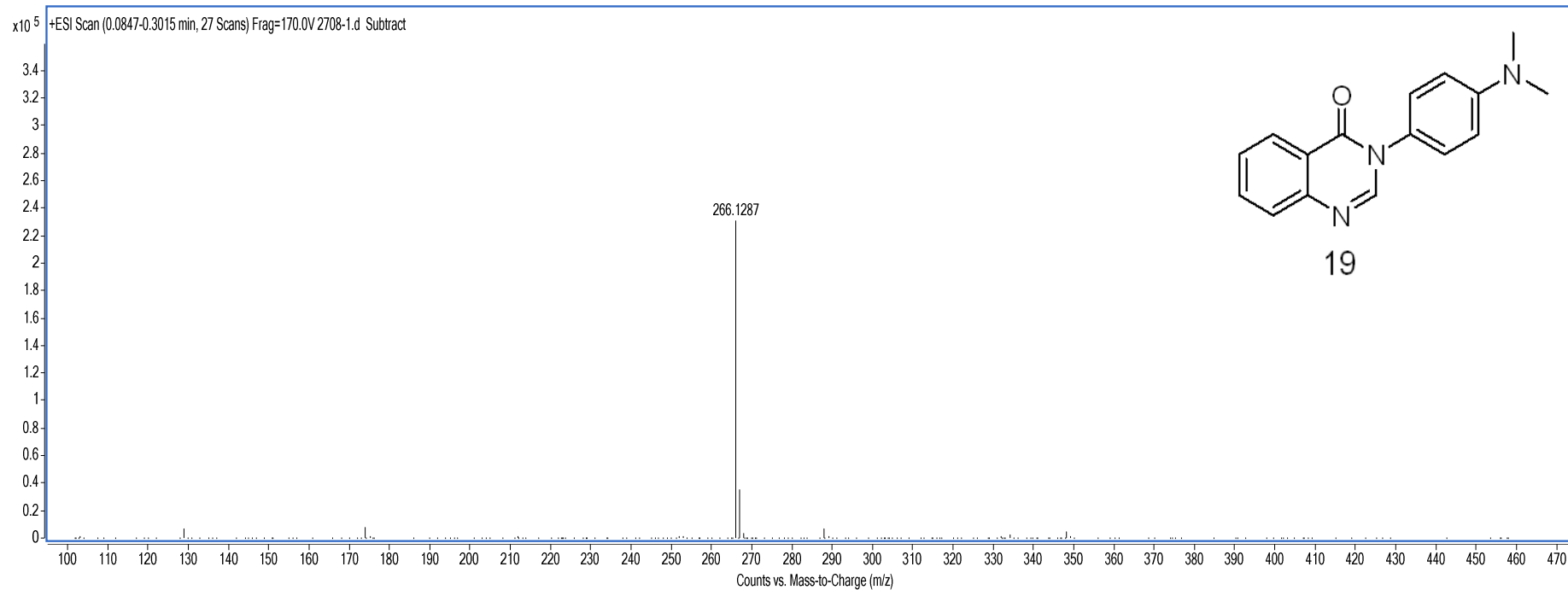




# Qualitative Analysis Report

**Data Filename** 2708.d  
**Instrument Name** TOF G6230A  
**Acq Method** YCL.M  
**IRM Calibration Status** Success  
**User Chromatograms**

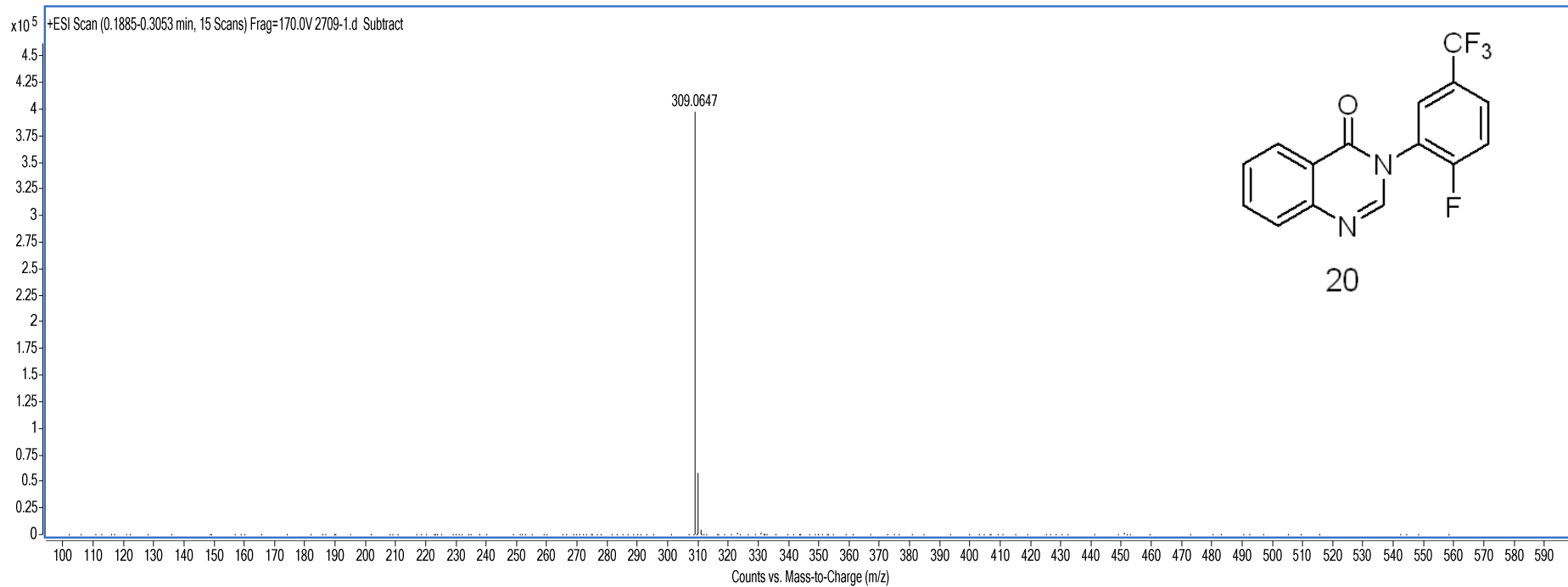
**Sample Name** YWJ1115  
**Acquired Time** 2017-06-26  
**Acquired SW** 6200 series TOF/6500 series



# Qualitative Analysis Report

**Data Filename** 2709.d  
**Instrument Name** TOF G6230A  
**Acq Method** YCL.M  
**IRM Calibration Status** Success  
**User Chromatograms**

**Sample Name** YWJ1116  
**Acquired Time** 2017-06-26  
**Acquired SW** 6200 series TOF/6500 series

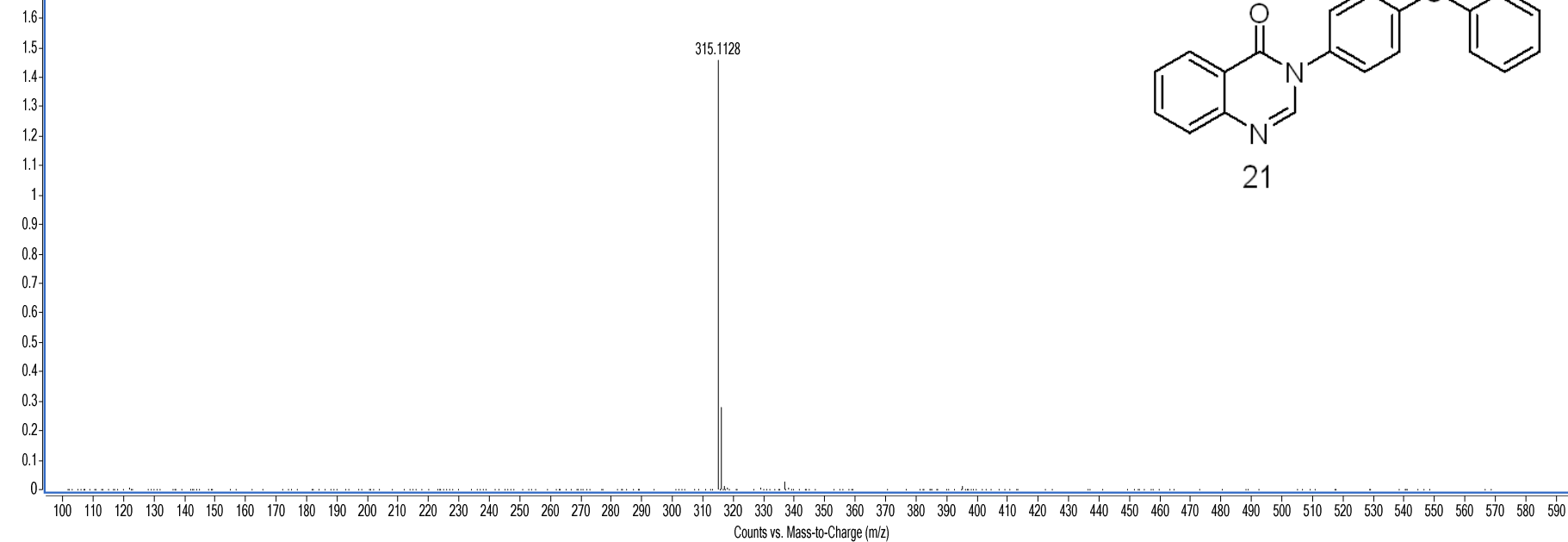


# Qualitative Analysis Report

**Data Filename** 2703.d  
**Instrument Name** TOF G6230A  
**Acq Method** YCL.M  
**IRM Calibration Status** Success  
**User Chromatograms**

**Sample Name** YWJ1107  
**Acquired Time** 2017-06-26  
**Acquired SW** 6200 series TOF/6500 series

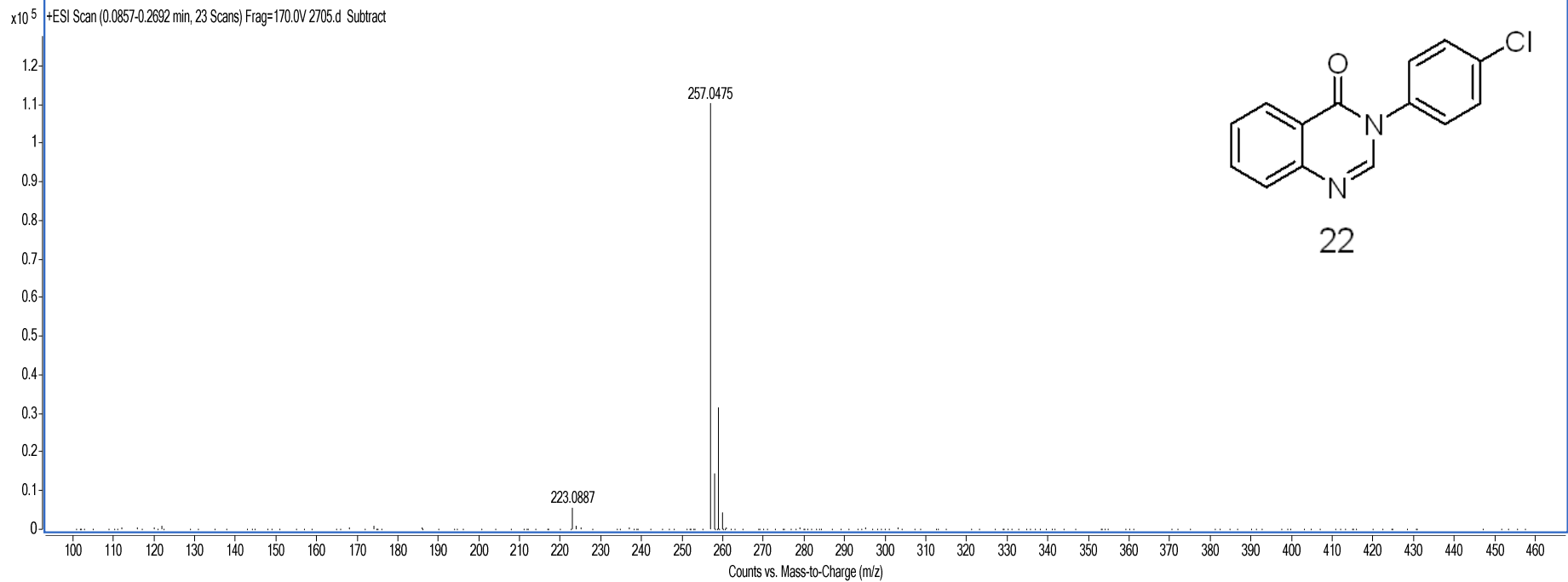
x10<sup>5</sup> +ESI Scan (0.0745-0.4331 min, 44 Scans) Frag=170.0V 2703.d Subtract



# Qualitative Analysis Report

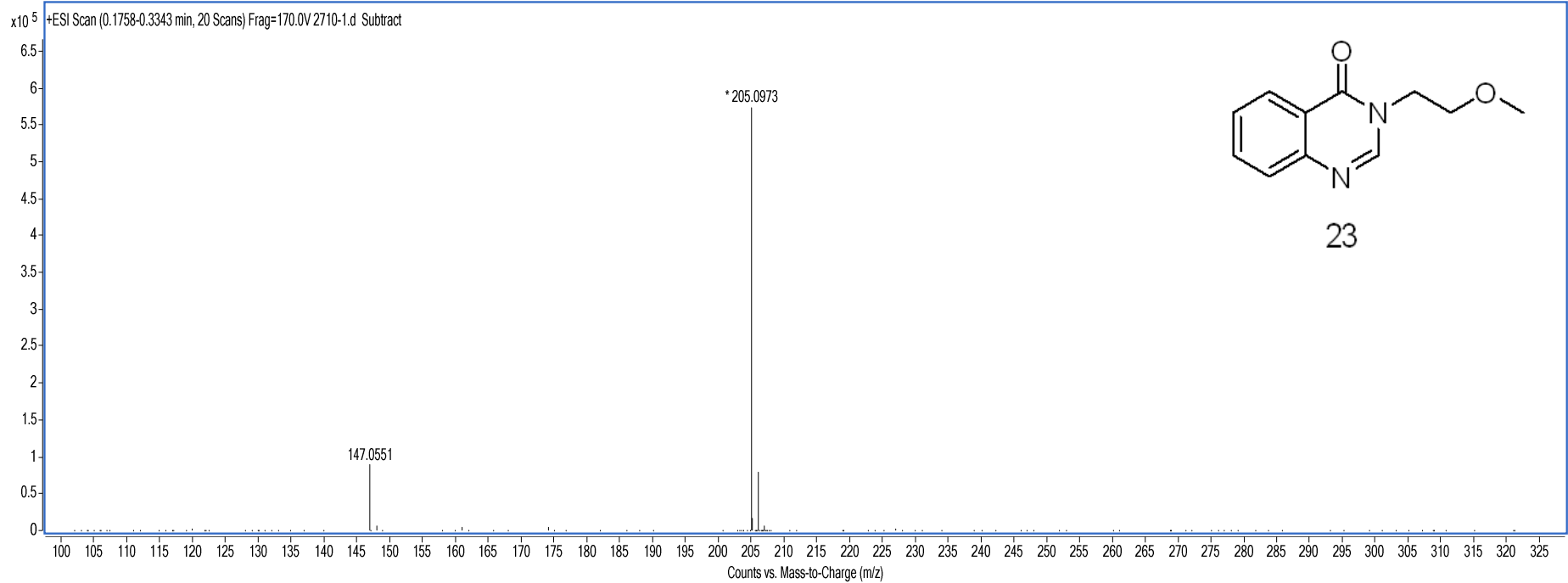
**Data Filename** 2705.d  
**Instrument Name** TOF G6230A  
**Acq Method** YCL.M  
**IRM Calibration Status** Success  
**User Chromatograms**

**Sample Name** YWJ1111  
**Acquired Time** 2017-06-26  
**Acquired SW** 6200 series TOF/6500 series



# Qualitative Analysis Report

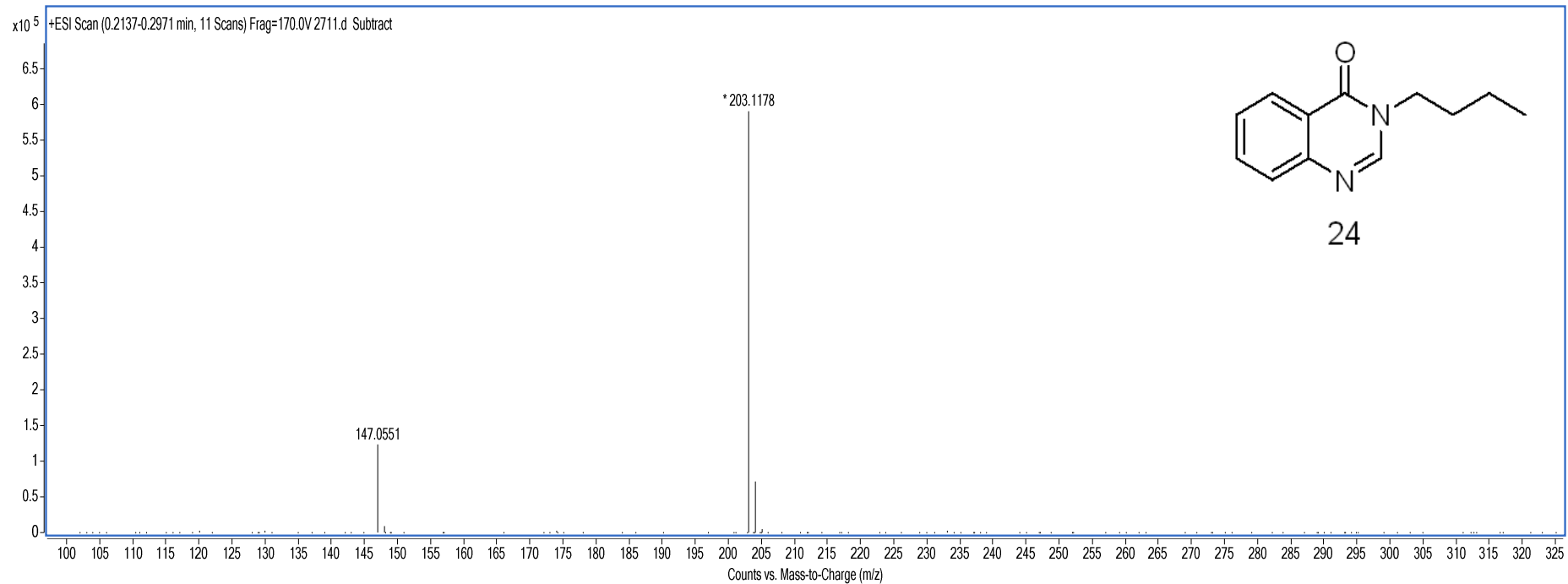
<b>Data Filename</b>	2710.d	<b>Sample Name</b>	YWJ1124
<b>Instrument Name</b>	TOF G6230A	<b>Acquired Time</b>	2017-06-26
<b>Acq Method</b>	YCL.M	<b>Acquired SW</b>	6200 series TOF/6500 series
<b>IRM Calibration Status</b>	Success		
<b>User Chromatograms</b>			



# Qualitative Analysis Report

**Data Filename** 2711.d  
**Instrument Name** TOF G6230A  
**Acq Method** YCL.M  
**IRM Calibration Status** Success  
**User Chromatograms**

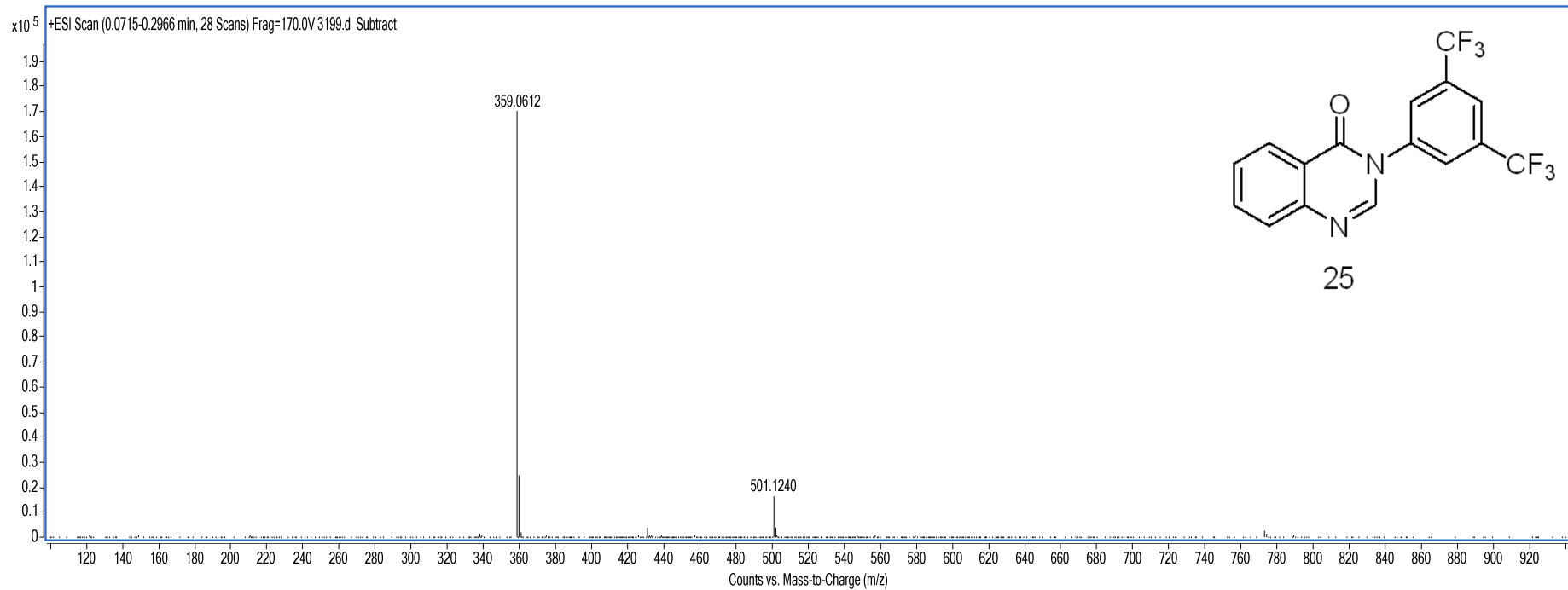
**Sample Name** YWJ1125  
**Acquired Time** 2017-06-26  
**Acquired SW** 6200 series TOF/6500 series



# Qualitative Analysis Report

**Data Filename** 3199.d  
**Instrument Name** TOF G6230A  
**Acq Method** YCL.M  
**IRM Calibration Status** Success  
**User Chromatograms**

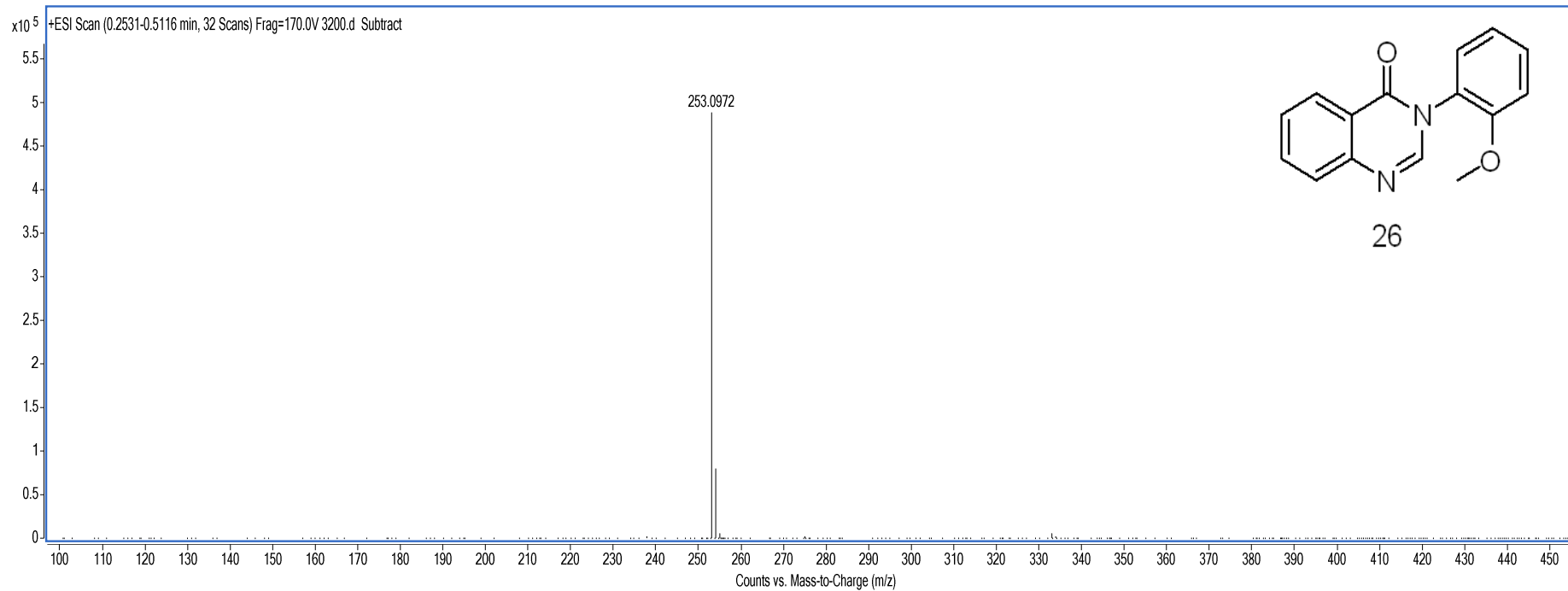
**Sample Name** YWJ1145  
**Acquired Time** 2017-07-20  
**Acquired SW** 6200 series TOF/6500 series



# Qualitative Analysis Report

**Data Filename** 3200.d  
**Instrument Name** TOF G6230A  
**Acq Method** YCL.M  
**IRM Calibration Status** Success  
**User Chromatograms**

**Sample Name** YWJ1146  
**Acquired Time** 2017-07-20  
**Acquired SW** 6200 series TOF/6500 series

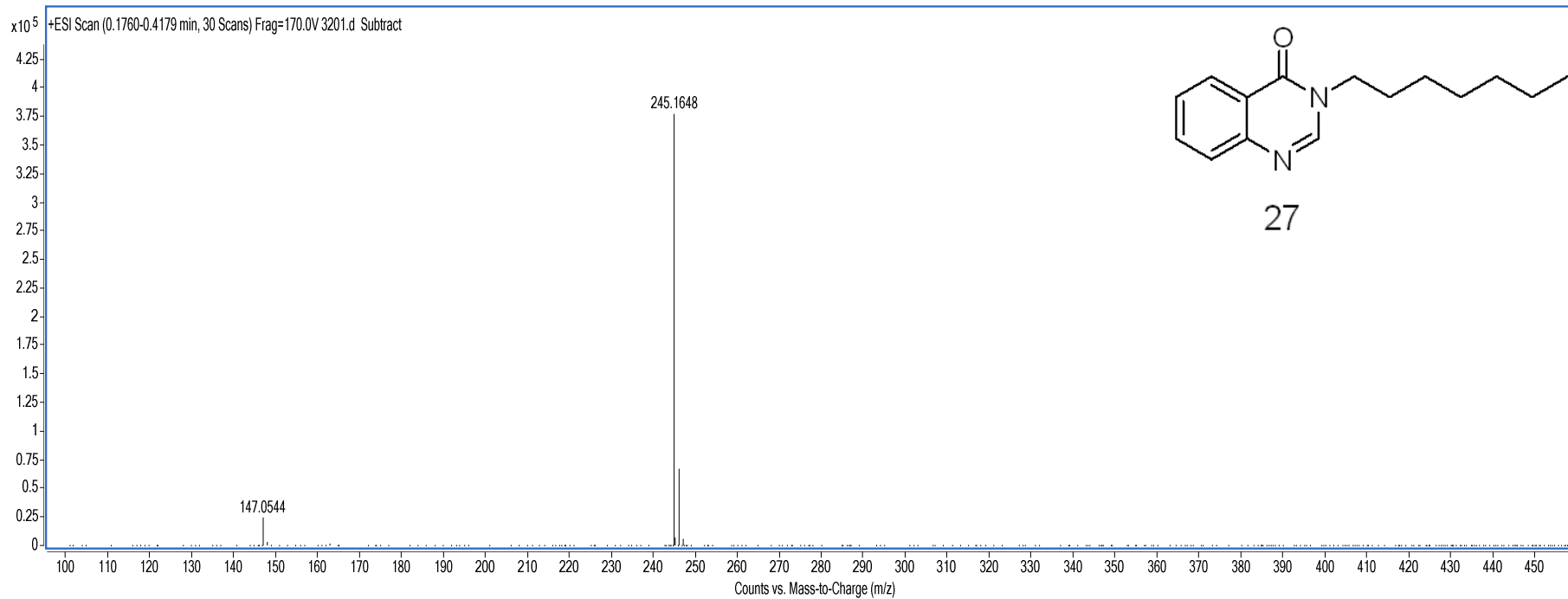




# Qualitative Analysis Report

**Data Filename** 3201.d  
**Instrument Name** TOF G6230A  
**Acq Method** YCL.M  
**IRM Calibration Status** Success  
**User Chromatograms**

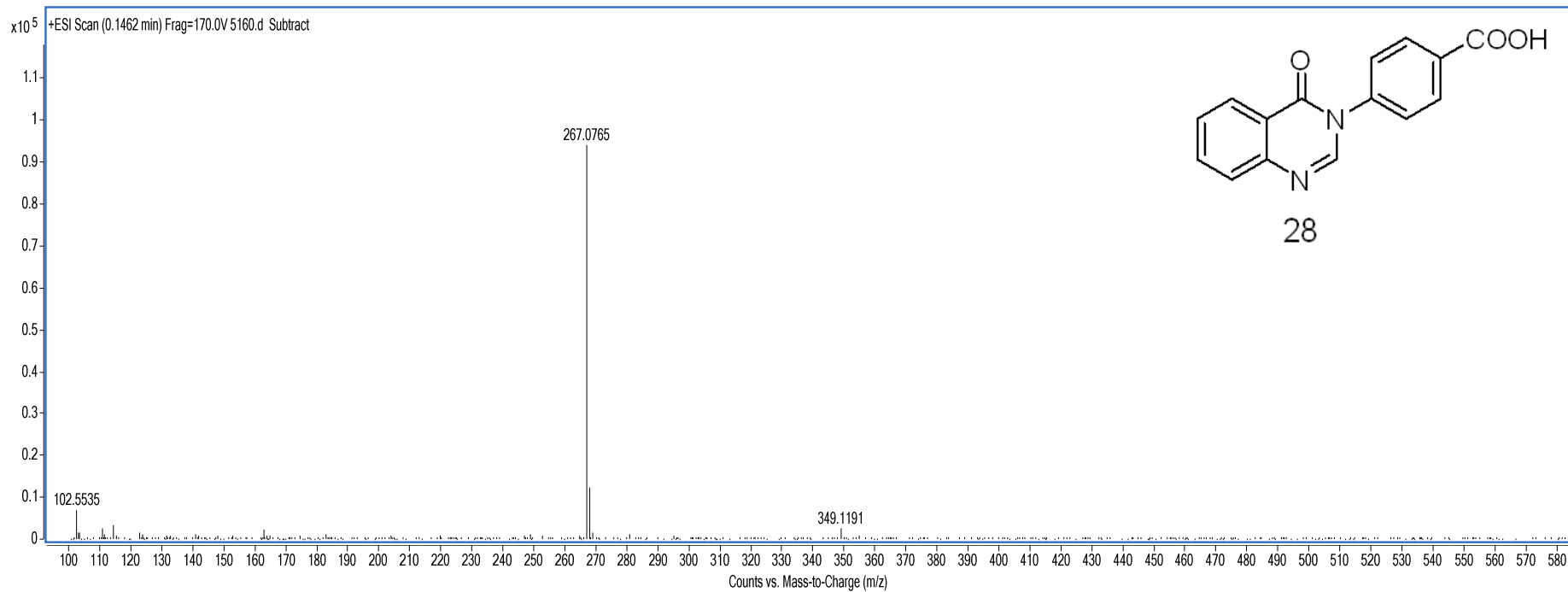
**Sample Name** YWJ1147  
**Acquired Time** 2017-07-20  
**Acquired SW** 6200 series TOF/6500 series



# Qualitative Analysis Report

**Data Filename** 5160.d  
**Instrument Name** TOF G6230A  
**Acq Method** YCL.M  
**IRM Calibration Status** Success  
**User Chromatograms**

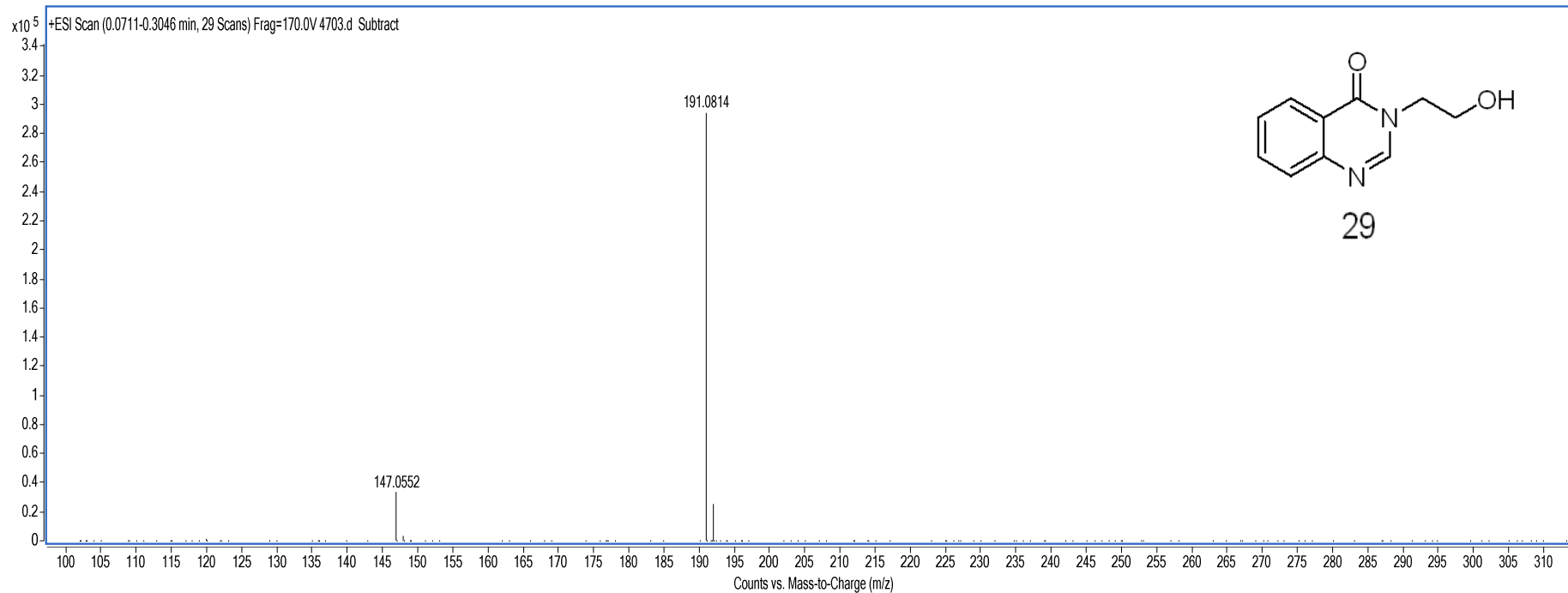
**Sample Name** YWJ1424  
**Acquired Time** 2017-11-02  
**Acquired SW** 6200 series TOF/6500 series



# Qualitative Analysis Report

**Data Filename** 4703.d  
**Instrument Name** TOF G6230A  
**Acq Method** YCL.M  
**IRM Calibration Status** Success  
**User Chromatograms**

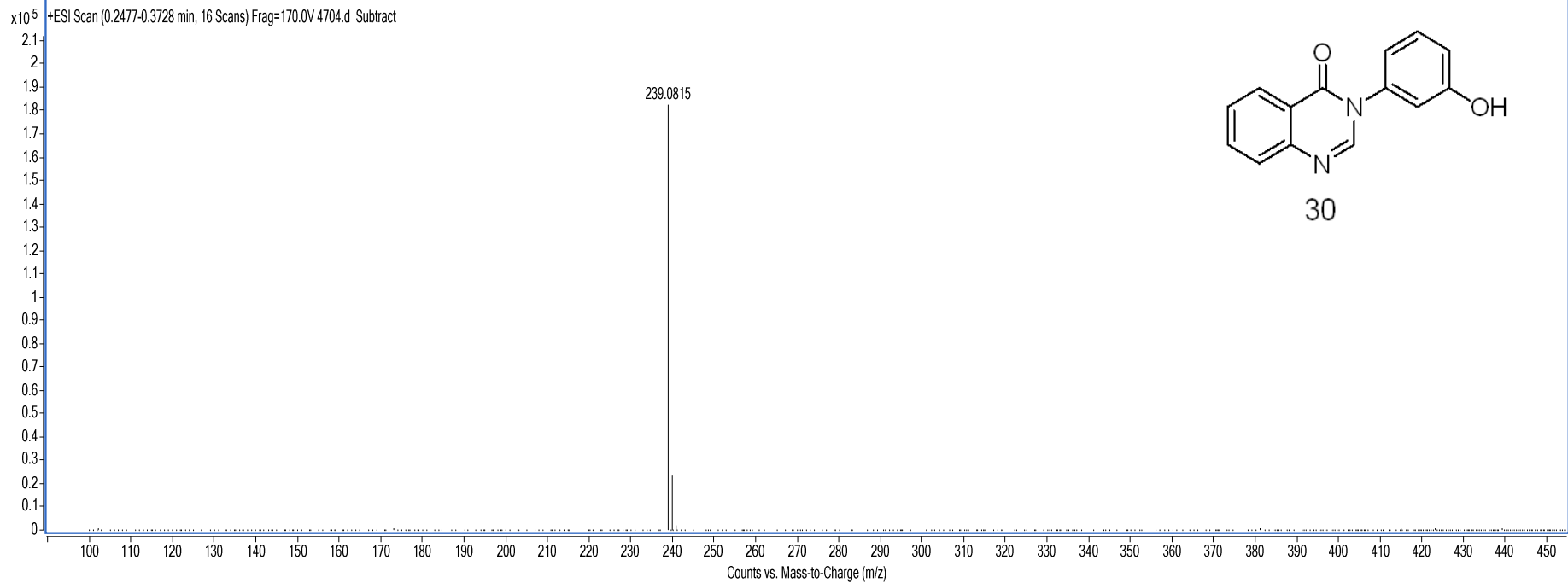
**Sample Name** YWJ1242-2  
**Acquired Time** 2017-10-12  
**Acquired SW** 6200 series TOF/6500 series



# Qualitative Analysis Report

**Data Filename** 4704.d  
**Instrument Name** TOF G6230A  
**Acq Method** YCL.M  
**IRM Calibration Status** Success  
**User Chromatograms**

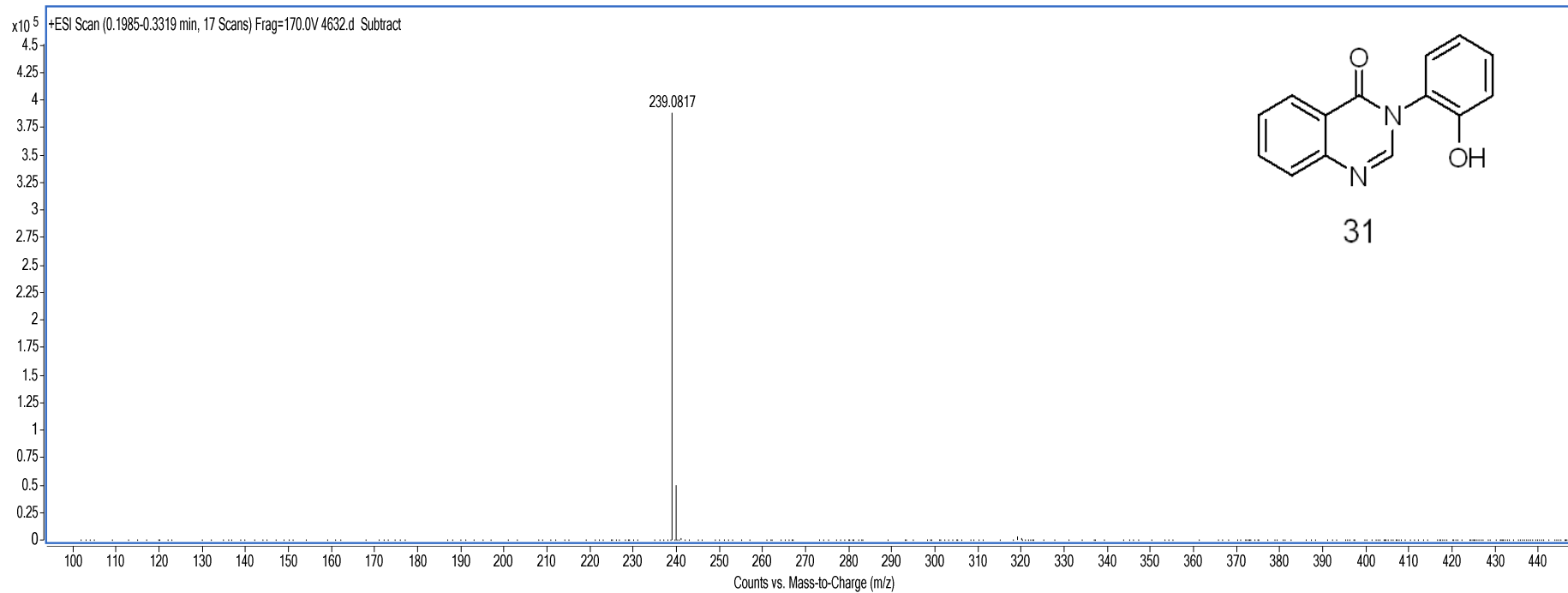
**Sample Name** YWJ1240  
**Acquired Time** 2017-10-12  
**Acquired SW** 6200 series TOF/6500 series



# Qualitative Analysis Report

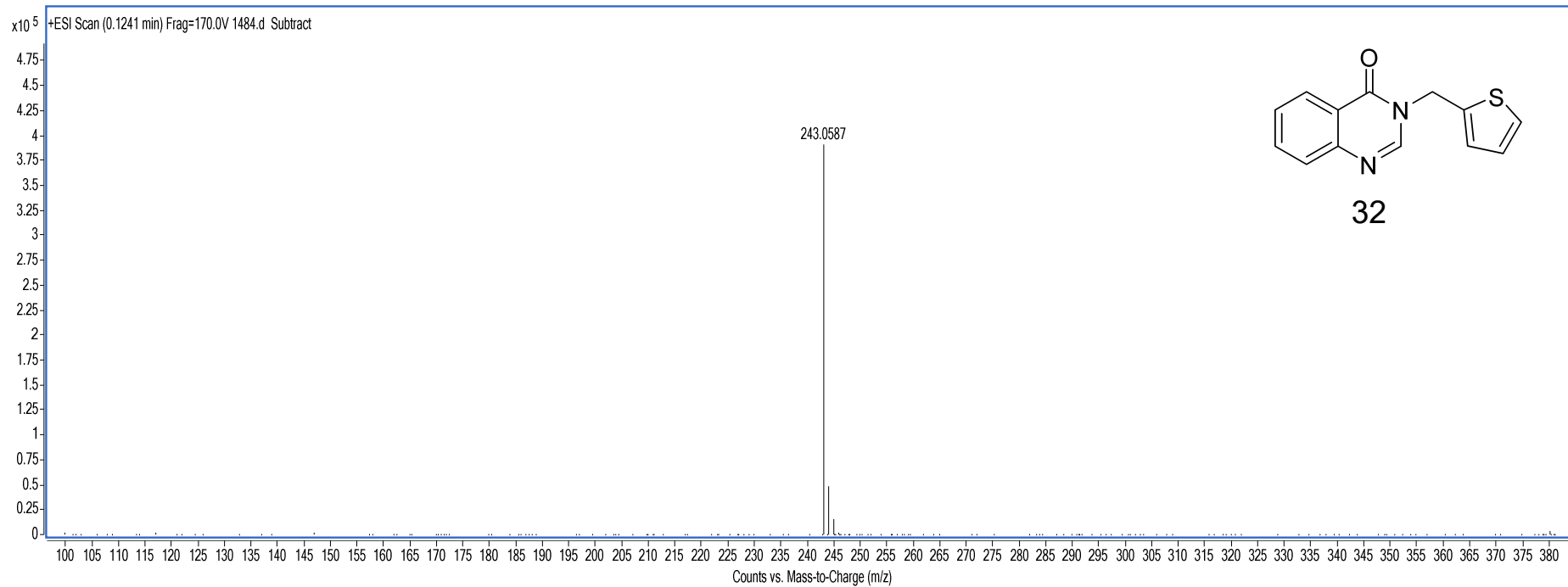
**Data Filename** 4632.d  
**Instrument Name** TOF G6230A  
**Acq Method** YCL.M  
**IRM Calibration Status** Success  
**User Chromatograms**

**Sample Name** YWJ1237  
**Acquired Time** 2017-10-11  
**Acquired SW** 6200 series TOF/6500 series



# Qualitative Analysis Report

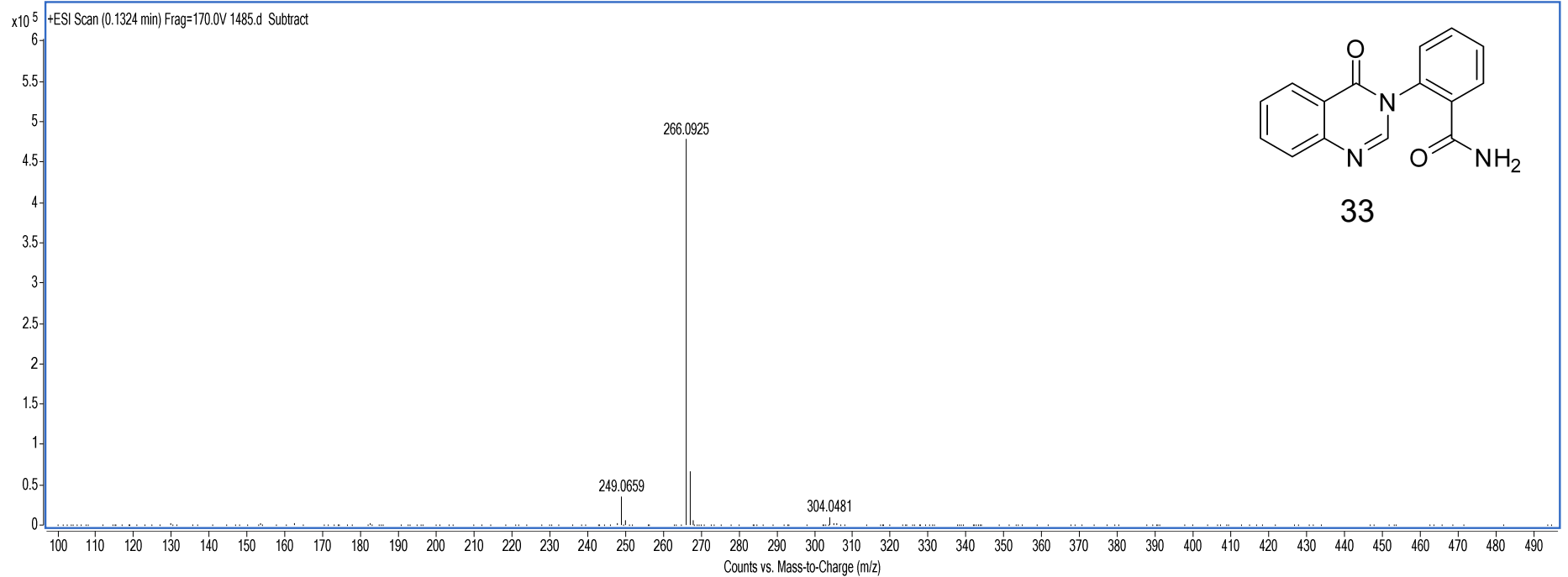
<b>Data Filename</b>	1484.d	<b>Sample Name</b>	YWJ1537
<b>Instrument Name</b>	TOF G6230A	<b>Acquired Time</b>	2018-01-26
<b>Acq Method</b>	YCL.M	<b>Acquired SW</b>	6200 series TOF/6500 series
<b>IRM Calibration Status</b>	Success		
<b>User Chromatograms</b>			



# Qualitative Analysis Report

**Data Filename** 1485.d  
**Instrument Name** TOF G6230A  
**Acq Method** YCL.M  
**IRM Calibration Status** Success  
**User Chromatograms**

**Sample Name** YWJ1540  
**Acquired Time** 2018-01-26  
**Acquired SW** 6200 series TOF/6500 series

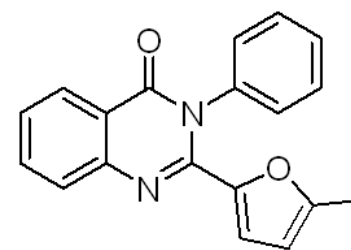
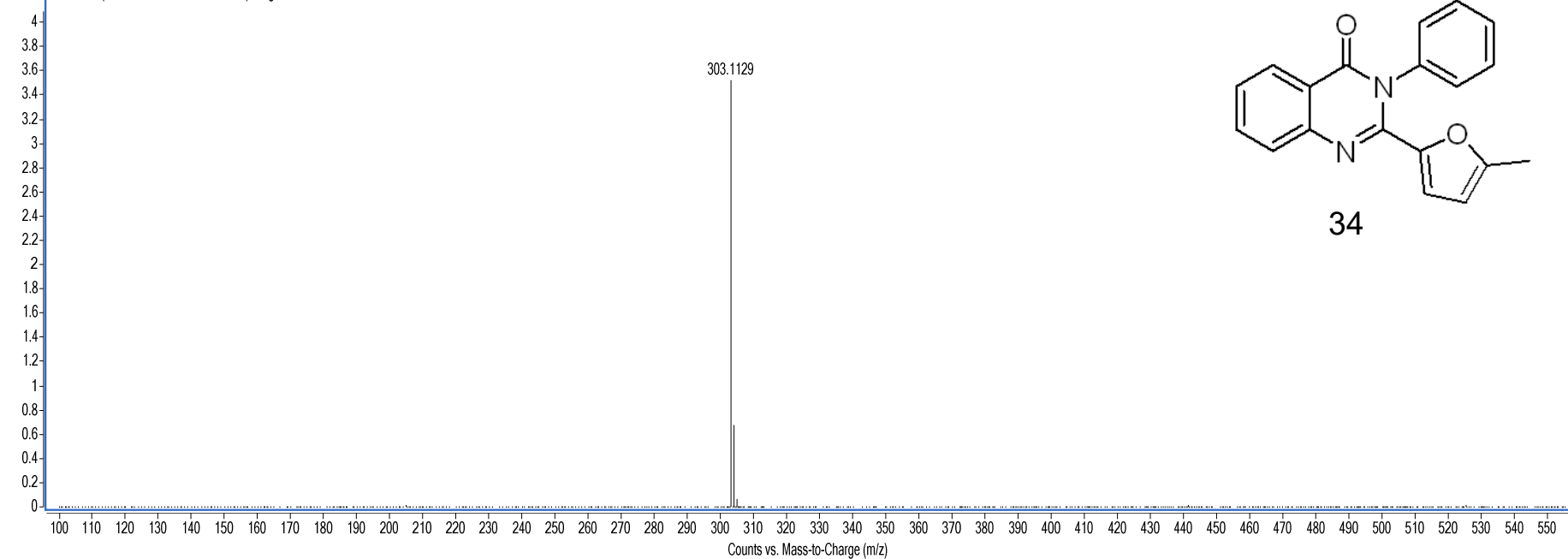


# Qualitative Analysis Report

**Data Filename** 3377.d  
**Instrument Name** TOF G6230A  
**Acq Method** YCL.M  
**IRM Calibration Status** Success  
**User Chromatograms**

**Sample Name** YWJ7028  
**Acquired Time** 2017-07-28  
**Acquired SW** 6200 series TOF/6500 series

x10<sup>5</sup> +ESI Scan (0.2845-0.5097 min, 28 Scans) Frag=170.0V 3377.d Subtract



34