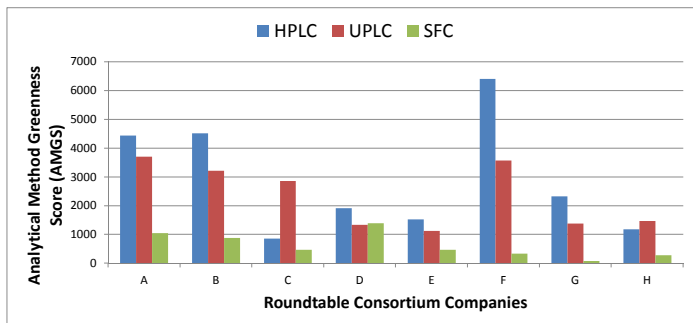


	Greenness Score	% of greenness score		
		Instrument Energy Score	Solvent Energy Score	Solvent EHS Score
A	2602	34.7%	35.4%	29.9%
	4520	10.3%	62.1%	27.6%
	3314	10.4%	56.5%	33.2%
	4104	13.1%	57.4%	29.6%
	6208	18.3%	48.0%	33.7%
	1053	21.3%	68.6%	10.1%
B	3207	16.7%	56.4%	26.9%
	3617	32.1%	41.9%	26.1%
	881	33.9%	57.6%	8.5%
C	3213	14.7%	59.3%	26.0%
	2860	7.5%	63.7%	28.8%
D	646	20.8%	69.0%	10.2%
	306	63.7%	31.7%	4.7%
	863	31.8%	46.3%	21.9%
E	2347	31.8%	32.5%	35.7%
	1496	25.8%	47.5%	26.7%
	1336	3.2%	82.5%	14.3%
F	1390	3.8%	83.8%	12.3%
	1527	16.9%	56.8%	26.4%
	1125	18.1%	56.5%	25.4%
G	477	44.0%	44.8%	11.2%
	4188	14.3%	55.3%	30.4%
	6412	15.7%	54.3%	30.1%
H	4996	8.6%	61.3%	30.2%
	335	22.3%	67.7%	10.0%
	1549	41.5%	42.3%	16.2%
G	87	69.2%	21.4%	9.5%
	82	72.9%	17.8%	9.3%
	85	70.3%	20.3%	9.4%
	84	71.2%	19.4%	9.4%
	82	72.9%	17.8%	9.3%
	3459	18.6%	56.0%	25.4%
	1202	21.4%	52.7%	25.9%
	1378	7.8%	63.9%	28.4%
H	1125	18.1%	56.5%	25.4%
	281	63.9%	31.5%	4.6%
	1471	7.3%	79.7%	13.0%
1182	26.1%	64.4%	9.5%	
Average		23.5%	53.8%	22.6%

		Company Code							
		A	B	C	D	E	F	G	H
Type	HPLC								
AMGS	4443	4517	863	1921	1527	6412	2330	1182	
Type	UPLC								
AMGS	3709	3213	2860	1336	1125	3577	1378	1471	
Type	SFC								
AMGS	1053	881	476	1390	476	335	84	281	



Method Number:

Technique:	UPLC
Instrument energy (kV):	0.9
Number of analyses of interest:	1
Number of injections per (or) one (all) analysis:	15

Greenness Score

3313.88

Instrument Energy Score	341.04	% of greenness score
Solvent Energy Score	1872.13	56.5%
Solvent EHS Score	1056.71	31.7%

Stock standard prep volume (mL):	50
Number of Stock standard preps:	2

Stock standard diluent	Volume per prep	Density	EHS	EHS Score per prep	EHS Score all preps	CE0/10	Solvent Energy Score per prep	Solvent Energy Score all preps
Solvent 1	25 mL	1.000	0.319	44.008	88.057	4.523	88.057	177.757
Solvent 2	50 mL	1.000	0.639	15.995	31.990	0.077	15.995	31.990
Solvent 3	0 mL	0.000	0.000	0.000	0.000	0.000	0.000	0.000

Working Standard prep volume (mL):	100
Number of Working standard preps:	4

Standard diluent	Volume per prep	Density	EHS	EHS Score per prep	EHS Score all preps	CE0/10	Solvent Energy Score per prep	Solvent Energy Score all preps
Solvent 1	50 mL	0.796	2.241	88.057	352.227	4.523	177.757	711.028
Solvent 2	50 mL	1.000	0.319	15.995	63.818	0.077	3.846	15.385
Solvent 3	0 mL	0.000	0.000	0.000	0.000	0.000	0.000	0.000

Sample prep volume (mL):	100
Number of sample preps:	4

Sample diluent	Volume per prep	Density	EHS	EHS Score per prep	EHS Score all preps	CE0/10	Solvent Energy Score per prep	Solvent Energy Score all preps
Solvent 1	50 mL	0.796	2.241	88.057	352.227	4.523	177.757	711.028
Solvent 2	50 mL	1.000	0.319	15.995	63.818	0.077	3.846	15.385
Solvent 3	0 mL	0.000	0.000	0.000	0.000	0.000	0.000	0.000

SST prep volume (mL):	10
Number of SST preps:	1

SST diluent	Volume per prep	Density	EHS	EHS Score per prep	EHS Score all preps	CE0/10	Solvent Energy Score per prep	Solvent Energy Score all preps
Solvent 1	5 mL	0.796	2.241	8.806	8.806	4.523	1.77757	17.776
Solvent 2	5 mL	1.000	0.319	3.998	3.998	0.077	0.385	3.998
Solvent 3	0 mL	0.000	0.000	0.000	0.000	0.000	0.000	0.000

Sensitivity Soln prep volume (mL):	100
Number of Sensitivity Soln preps:	1

Sensitivity Soln prep	Volume per prep	Density	EHS	EHS Score per prep	EHS Score all preps	CE0/10	Solvent Energy Score per prep	Solvent Energy Score all preps
Solvent 1	50 mL	0.796	2.241	88.057	88.057	4.523	177.757	177.757
Solvent 2	50 mL	1.000	0.319	15.995	15.995	0.077	3.846	3.846
Solvent 3	0 mL	0.000	0.000	0.000	0.000	0.000	0.000	0.000

MOBILE PHASES

Mobile phase A

Solvent	Volume per injection	Density	EHS	EHS Score per prep	EHS Score all preps	CE0/10	Solvent Energy Score per injection	Solvent Energy Score all injections
Solvent 1	6.88 mL	1.000	0.319	2.197	32.982	0.077	7.544	7.544
Solvent 2	0.00 mL	0.000	0.000	0.000	0.000	0.000	0.000	0.000
Solvent 3	0.00 mL	0.000	0.000	0.000	0.000	0.000	0.000	0.000

Mobile phase B

Solvent	Volume per injection	Density	EHS	EHS Score per prep	EHS Score all preps	CE0/10	Solvent Energy Score per injection	Solvent Energy Score all injections
Solvent 1	0.95 mL	0.796	2.241	0.386	3.794	4.523	1.991	29.863
Solvent 2	0.14 mL	0.792	0.272	0.030	0.453	0.077	0.099	0.128
Solvent 3	0.00 mL	0.000	0.000	0.000	0.000	0.000	0.000	0.000

Flow rate (mL/min):	0.7
Run time (min/injection):	16

Gradient	%A	%B	A	B
0	85	15	0.95	0.05
0.5	85	15	4.82	0.05
1.2	85	15	4.82	0.05
1.5	85	15	4.82	0.05
1.6	85	15	4.82	0.05
1.7	85	15	4.82	0.05
1.8	85	15	4.82	0.05
1.9	85	15	4.82	0.05
2.0	85	15	4.82	0.05
2.1	85	15	4.82	0.05
2.2	85	15	4.82	0.05
2.3	85	15	4.82	0.05
2.4	85	15	4.82	0.05
2.5	85	15	4.82	0.05
2.6	85	15	4.82	0.05
2.7	85	15	4.82	0.05
2.8	85	15	4.82	0.05
2.9	85	15	4.82	0.05
3.0	85	15	4.82	0.05
3.1	85	15	4.82	0.05
3.2	85	15	4.82	0.05
3.3	85	15	4.82	0.05
3.4	85	15	4.82	0.05
3.5	85	15	4.82	0.05
3.6	85	15	4.82	0.05
3.7	85	15	4.82	0.05
3.8	85	15	4.82	0.05
3.9	85	15	4.82	0.05
4.0	85	15	4.82	0.05
4.1	85	15	4.82	0.05
4.2	85	15	4.82	0.05
4.3	85	15	4.82	0.05
4.4	85	15	4.82	0.05
4.5	85	15	4.82	0.05
4.6	85	15	4.82	0.05
4.7	85	15	4.82	0.05
4.8	85	15	4.82	0.05
4.9	85	15	4.82	0.05
5.0	85	15	4.82	0.05
5.1	85	15	4.82	0.05
5.2	85	15	4.82	0.05
5.3	85	15	4.82	0.05
5.4	85	15	4.82	0.05
5.5	85	15	4.82	0.05
5.6	85	15	4.82	0.05
5.7	85	15	4.82	0.05
5.8	85	15	4.82	0.05
5.9	85	15	4.82	0.05
6.0	85	15	4.82	0.05
6.1	85	15	4.82	0.05
6.2	85	15	4.82	0.05
6.3	85	15	4.82	0.05
6.4	85	15	4.82	0.05
6.5	85	15	4.82	0.05
6.6	85	15	4.82	0.05
6.7	85	15	4.82	0.05
6.8	85	15	4.82	0.05
6.9	85	15	4.82	0.05
7.0	85	15	4.82	0.05
7.1	85	15	4.82	0.05
7.2	85	15	4.82	0.05
7.3	85	15	4.82	0.05
7.4	85	15	4.82	0.05
7.5	85	15	4.82	0.05
7.6	85	15	4.82	0.05
7.7	85	15	4.82	0.05
7.8	85	15	4.82	0.05
7.9	85	15	4.82	0.05
8.0	85	15	4.82	0.05
8.1	85	15	4.82	0.05
8.2	85	15	4.82	0.05
8.3	85	15	4.82	0.05
8.4	85	15	4.82	0.05
8.5	85	15	4.82	0.05
8.6	85	15	4.82	0.05
8.7	85	15	4.82	0.05
8.8	85	15	4.82	0.05
8.9	85	15	4.82	0.05
9.0	85	15	4.82	0.05
9.1	85	15	4.82	0.05
9.2	85	15	4.82	0.05
9.3	85	15	4.82	0.05
9.4	85	15	4.82	0.05
9.5	85	15	4.82	0.05
9.6	85	15	4.82	0.05
9.7	85	15	4.82	0.05
9.8	85	15	4.82	0.05
9.9	85	15	4.82	0.05
10.0	85	15	4.82	0.05
Total MP volume per injection (mL)	6.88		4.32	

NOTES

Based on actual A&D Chrom/Assay method UPLC method using Waters Connex C18, 100mm x 2.1 mm ID, 1.6 micron particle

Method Number: **UPLC**

Technique:	UPLC
Instrument energy (kWh):	0.9
Number of analyses of interest:	1
Number of injections per lot (all analysis):	15

Greenness Score 3212.86

Instrument Energy Score	471.68	% of greenness score
Solvent Energy Score	1904.92	14.7%
Solvent EHS Score	836.26	59.3%
		25.0%

Stock standard prep volume (ml):

Number of Stock standard preps:

Stock standard diluent	Volume per prep	Density	EHS	EHS Score per prep	EHS Score all preps	CEO/JO	Solvent Energy Score per prep	Solvent Energy Score all preps
Solvent 1	0 ml	0.000	0.000	0.000	0.000	0.000	0.000	0.000
Solvent 2	0 ml	0.000	0.000	0.000	0.000	0.000	0.000	0.000
Solvent 3	0 ml	0.000	0.000	0.000	0.000	0.000	0.000	0.000
Working Standard prep volume (ml):	100							
Number of working standard preps:	2							

Standard diluent	Volume per prep	Density	EHS	EHS Score per prep	EHS Score all preps	CEO/JO	Solvent Energy Score per prep	Solvent Energy Score all preps
Solvent 1	50 ml	0.796	2.241	88.057	176.114	5.880	231.084	462.168
Solvent 2	50 ml	1.000	0.219	15.995	31.990	0.001	0.950	0.000
Solvent 3	0 ml	0.000	0.000	0.000	0.000	0.000	0.000	0.000

Sample prep volume (ml):

Number of sample preps:

Sample diluent	Volume per prep	Density	EHS	EHS Score per prep	EHS Score all preps	CEO/JO	Solvent Energy Score per prep	Solvent Energy Score all preps
Solvent 1	50 ml	0.796	2.241	88.057	176.114	5.880	231.084	462.168
Solvent 2	50 ml	1.000	0.219	15.995	31.990	0.001	0.950	0.000
Solvent 3	0 ml	0.000	0.000	0.000	0.000	0.000	0.000	0.000

SST prep volume (ml):

Number of SST preps:

SST diluent	Volume per prep	Density	EHS	EHS Score per prep	EHS Score all preps	CEO/JO	Solvent Energy Score per prep	Solvent Energy Score all preps
Solvent 1	50 ml	0.796	2.241	88.057	88.057	5.880	231.084	231.084
Solvent 2	50 ml	1.000	0.219	15.995	15.995	0.001	0.950	0.950
Solvent 3	0 ml	0.000	0.000	0.000	0.000	0.000	0.000	0.000

Sensitivity Soln prep volume (ml):

Number of Sensitivity Soln preps:

Sensitivity Soln prep	Volume per prep	Density	EHS	EHS Score per prep	EHS Score all preps	CEO/JO	Solvent Energy Score per prep	Solvent Energy Score all preps
Solvent 1	75 ml	0.796	2.241	132.085	132.085	5.880	346.626	346.626
Solvent 2	0 ml	0.000	0.000	0.000	0.000	0.000	0.000	0.000
Solvent 3	0 ml	0.000	0.000	0.000	0.000	0.000	0.000	0.000

Mobile phase A

Solvent	Volume per injection	Density	EHS	EHS Score per prep	EHS Score all preps	CEO/JO	Solvent Energy Score per injection	Solvent Energy Score all injections
Solvent 1	6.18 ml	1.000	0.219	1.971	29.568	0.001	0.006	0.093
Solvent 2	0.34 ml	0.796	2.241	0.593	8.901	5.880	1.557	21.360
Solvent 3	0.51 ml	0.792	0.277	0.109	1.635	1.850	0.741	11.109

Mobile phase B

Solvent	Volume per injection	Density	EHS	EHS Score per prep	EHS Score all preps	CEO/JO	Solvent Energy Score per injection	Solvent Energy Score all injections
Solvent 1	1.59 ml	1.000	0.219	0.516	7.596	0.001	0.007	248.577
Solvent 2	34 ml	0.796	2.241	6335	5927	5.880	18675	118.959
Solvent 3	540 ml	0.792	0.277	1169	17458	1.850	7386	

Flow rate (ml/min):

Run time (min/injection):

Gradient	Time (min)	%A	%B	A	B	MIP volume per gradient step (ml)
0	60	40	60	0.26	0.32	
1	45	40	60	4.18	5.10	
16	10	90	10	1.10	2.90	
20	10	90	10	0.32	2.88	
20.2	60	40	60	0.06	0.10	
22	60	40	60	0.96	0.58	
	40	60	40	0.49	0.49	
	100	100	0	0.00	0.00	
	100	100	0	0.00	0.00	
	7.02			10.58		

INSTRUMENT CONDITIONS

MOBILE PHASES

SENSITIVITY

SST

SAMPLE

STANDARDS

METHOD

NOTES

Sensitivity assumptions:
Sensitivity Check solution 1 prepared by diluting 1 ml of standard into 100 ml
Sensitivity Check solution 2 prepared by diluting 5 ml of solution 1 into 50 ml
Total: 150 ml

Injection assumptions: Blank x2, Sensitivity x2, Blank x1, SST x1, Std 1 x6, Std 2 x1, Sample wt1 x1, Sample wt2 x1, Std 1 x1, SST x1, Total: 17

Greenness Score **2347.05**

Instrument Energy Score		% of greenness score	
Instrument Energy Score	747.04	31.8%	
Solvent Energy Score	792.88	32.9%	
Solvent EHS Score	807.13	33.7%	

Method Number:		HPLC	
Technique:	HPLC		
Instrument energy (MJ):	1.0		
Number of analyses of interest:	1		
Number of injections run for each analysis:	15		

Stock standard prep volume (ml):		100	
Number of Stock standard preps:	1		

Stock standard diluent	Volume per prep	Density	EHS	EHS Score per prep	EHS Score all preps	CE0/10	Solvent Energy Score per prep	Solvent Energy Score all preps
Solvent 1	100 mL	1.000	0.319	31.909	31.909	0.000	0.100	0.100
Solvent 2	0 mL	0.000	0.000	0.000	0.000	0.000	0.000	0.000
Solvent 3	0 mL	0.000	0.000	0.000	0.000	0.000	0.000	0.000

Working Standard prep volume (ml):		100	
Number of Working standard preps:	2		

Standard diluent	Volume per prep	Density	EHS	EHS Score per prep	EHS Score all preps	CE0/10	Solvent Energy Score per prep	Solvent Energy Score all preps
Solvent 1	100 mL	1.000	0.319	31.909	63.818	5.880	0.100	0.200
Solvent 2	0 mL	0.796	2.241	0.000	0.000	0.000	0.000	0.000
Solvent 3	0 mL	0.000	0.000	0.000	0.000	0.000	0.000	0.000

Sample prep volume (ml):		500	
Number of sample preps:	2		

Sample diluent	Volume per prep	Density	EHS	EHS Score per prep	EHS Score all preps	CE0/10	Solvent Energy Score per prep	Solvent Energy Score all preps
Solvent 1	500 mL	1.000	0.319	159.546	319.092	0.001	0.500	1.000
Solvent 2	0 mL	0.796	2.241	0.000	0.000	5.880	0.000	0.000
Solvent 3	0 mL	0.000	0.000	0.000	0.000	0.000	0.000	0.000

SST prep volume (ml):		50	
Number of SST preps:	1		

SST diluent	Volume per prep	Density	EHS	EHS Score per prep	EHS Score all preps	CE0/10	Solvent Energy Score per prep	Solvent Energy Score all preps
Solvent 1	50 mL	1.000	0.319	15.955	15.955	0.001	0.050	0.050
Solvent 2	0 mL	0.000	0.000	0.000	0.000	0.000	0.000	0.000
Solvent 3	0 mL	0.000	0.000	0.000	0.000	0.000	0.000	0.000

Sensitivity Soln prep volume (ml):		95	
Number of Sensitivity Soln preps:	1		

Sensitivity Soln	Volume per prep	Density	EHS	EHS Score per prep	EHS Score all preps	CE0/10	Solvent Energy Score per prep	Solvent Energy Score all preps
Solvent 1	90.25 mL	1.000	0.319	28.798	28.798	0.001	0.090	0.090
Solvent 2	4.75 mL	0.796	2.241	0.000	0.000	0.000	0.000	0.000
Solvent 3	0 mL	0.000	0.000	0.000	0.000	0.000	0.000	0.000

Mobile phase A		Percent	
Solvent 1	Water	100	
Solvent 2	Acetonitrile	0	
Solvent 3		0	

Solvent	Volume per injection	Density	EHS	EHS Score per prep	EHS Score all preps	CE0/10	Solvent Energy Score per injection	Solvent Energy Score all injections
Solvent 1	17.16 mL	1.000	0.319	5.474	82.113	0.001	0.017	0.257
Solvent 2	0.00 mL	0.000	0.000	0.000	0.000	0.000	0.000	0.000
Solvent 3	0.00 mL	0.000	0.000	0.000	0.000	0.000	0.000	0.000

Mobile phase B		Percent	
Solvent 1	Acetonitrile	90	
Solvent 2	Water	10	
Solvent 3		0	

Solvent	Volume per injection	Density	EHS	EHS Score per prep	EHS Score all preps	CE0/10	Solvent Energy Score per injection	Solvent Energy Score all injections
Solvent 1	10.66 mL	0.796	2.241	18.774	281.607	5.880	482.67	739.010
Solvent 2	1.88 mL	1.000	0.319	0.378	5.669	0.001	0.001	0.008
Solvent 3	0.00 mL	0.000	0.000	0.000	0.000	0.000	0.000	0.000

Flow rate (ml/min):		1	
Number of injections:	29		

Run time (min/injection):		29	
---------------------------	--	----	--

Gradient	Time (min)	%A	%B	A	B
	0	64	36	1.76	0.72
	20	53	46	10.43	3.74
	20.1	52	45	0.03	0.07
	21	51	45	0.04	0.85
	21.1	64	36	0.03	0.07
	29	64	36	5.96	2.84
	30	64	36	0.00	0.00
	100	100	0	0.00	0.00
				Total MP volume per injection (ml)	11.84
					17.16

Instrument Conditions		MP volume per gradient step (ml)	
		A	B
		1.76	0.72
		10.43	3.74
		0.03	0.07
		0.04	0.85
		0.03	0.07
		5.96	2.84
		0.00	0.00
		0.00	0.00
		Total MP volume per injection (ml)	11.84
			17.16

Method is assay and degradation products method (analysis = 91)

Mobile phase additive is ~10 mM Ammonium acetate

Az150 is on a low level (entry standard which isn't captured specifically in the above table. It is prepared in the same volumes as the sensitivity standard, so I have added an extra preparation there to account for this.

Phase 3 validated

NOTES

Method Number:		HPLC	
Technique:			
Instrument energy (kWh):	1.0		
Number of analyses of interest:	1		
Number of injections per lot (or per analysis):	15		

Greenness Score		1495.51	
Instrument Energy Score	386.40	% of greenness score	
Solvent Energy Score	709.72	25.8%	
Solvent EHS Score	399.39	47.5%	
		26.7%	

Stock standard prep volume (ml):		25	
Number of Stock standard preps:	2		

Stock standard diluent	Percent	Volume per prep	Density	EHS	EHS Score per prep	EHS Score all preps	CEQ/DJ	Solvent Energy Score per prep	Solvent Energy Score all preps
Solvent 1	50	12.5 mL	1.000	0.772	2.696	5.392	1.850	18.315	36.630
Solvent 2	50	12.5 mL	1.000	0.786	3.989	7.977	0.001	0.013	0.025
Solvent 3	0	0 mL	0.000	0.000	0.000	0.000	0.000	0.000	0.000

Working Standard prep volume (ml):		2	
Number of Working standard preps:	1		

Standard diluent	Percent	Volume per prep	Density	EHS	EHS Score per prep	EHS Score all preps	CEQ/DJ	Solvent Energy Score per prep	Solvent Energy Score all preps
Solvent 1	50	1 mL	1.000	0.319	0.319	0.319	1.761	4.622	4.622
Solvent 2	50	1 mL	0.786	0.241	1.761	1.761	0.000	0.000	0.000
Solvent 3	0	0 mL	0.000	0.000	0.000	0.000	0.000	0.000	0.000

Sample prep volume (ml):		100	
Number of sample preps:	1		

Sample diluent	Percent	Volume per prep	Density	EHS	EHS Score per prep	EHS Score all preps	CEQ/DJ	Solvent Energy Score per prep	Solvent Energy Score all preps
Solvent 1	50	50 mL	1.000	0.319	15.955	15.955	0.001	0.050	0.050
Solvent 2	50	50 mL	0.786	2.241	88.057	88.057	5.880	231.084	231.084
Solvent 3	0	0 mL	0.000	0.000	0.000	0.000	0.000	0.000	0.000

SST prep volume (ml):		25	
Number of SST preps:	1		

SST diluent	Percent	Volume per prep	Density	EHS	EHS Score per prep	EHS Score all preps	CEQ/DJ	Solvent Energy Score per prep	Solvent Energy Score all preps
Solvent 1	60	15 mL	1.000	0.319	4.786	4.786	0.001	0.015	0.015
Solvent 2	40	10 mL	0.786	2.241	17.611	17.611	5.880	46.217	46.217
Solvent 3	0	0 mL	0.000	0.000	0.000	0.000	0.000	0.000	0.000

Sensitivity Soln prep volume (ml):		100	
Number of Sensitivity Soln preps:	2		

Sensitivity Soln	Percent	Volume per prep	Density	EHS	EHS Score per prep	EHS Score all preps	CEQ/DJ	Solvent Energy Score per prep	Solvent Energy Score all preps
Solvent 1	100	100 mL	1.000	0.319	31.909	63.818	0.001	0.100	0.200
Solvent 2	0	0 mL	0.000	0.000	0.000	0.000	0.000	0.000	0.000
Solvent 3	0	0 mL	0.000	0.000	0.000	0.000	0.000	0.000	0.000

MOBILE PHASES

Mobile phase A		Percent		Volume per injection		Density		EHS		EHS Score per prep		EHS Score all preps		CEQ/DJ		Solvent Energy Score per injection		Solvent Energy Score all injections	
Solvent 1	Water	100	8.74 mL	0.000 mL	1.000	0.319	0.000	2.786	41.821	0.001	0.000	0.131	0.000	0.000	0.000	0.000	0.000	0.000	0.000
Solvent 2	Water	100	8.74 mL	0.000 mL	1.000	0.319	0.000	2.786	41.821	0.001	0.000	0.131	0.000	0.000	0.000	0.000	0.000	0.000	0.000
Solvent 3	Water	100	8.74 mL	0.000 mL	1.000	0.319	0.000	2.786	41.821	0.001	0.000	0.131	0.000	0.000	0.000	0.000	0.000	0.000	0.000

Mobile phase B		Percent		Volume per injection		Density		EHS		EHS Score per prep		EHS Score all preps		CEQ/DJ		Solvent Energy Score per injection		Solvent Energy Score all injections	
Solvent 1	Acetonitrile	90	5.64 mL	0.000 mL	0.786	2.241	0.786	9.916	148.893	0.001	0.001	5.880	280.049	0.001	0.009	0.009	390.734	0.009	0.009
Solvent 2	Water	10	0.63 mL	0.000 mL	1.000	0.319	1.000	0.240	0.297	0.001	0.001	0.009	0.009	0.001	0.009	0.009	0.009	0.009	0.009
Solvent 3	Water	10	0.63 mL	0.000 mL	1.000	0.319	1.000	0.240	0.297	0.001	0.001	0.009	0.009	0.001	0.009	0.009	0.009	0.009	0.009

Flow rate (ml/min):		1	
Run time (min/injection):	15		

Gradient	Time (min)	%A	%B	A	B	MP volume per gradient step (ml)
0	0	95	5	0.95	0.05	
1	1	95	5	0.95	0.05	
2	5	95	5	0.95	0.05	
3	10	95	5	0.95	0.05	
4	12.25	95	5	0.95	0.05	
5	12.25	95	5	0.13	0.13	
6	15	95	5	2.61	0.14	
7	15	95	5	0.00	0.00	
8	15	95	5	0.00	0.00	
9	15	95	5	0.00	0.00	
10	15	95	5	0.00	0.00	
11	15	95	5	0.00	0.00	
12	15	95	5	0.00	0.00	
13	15	95	5	0.00	0.00	
14	15	95	5	0.00	0.00	
15	15	95	5	0.00	0.00	
Total MP volume per injection (ml)				6.26		

Instrument Conditions		100	
Number of Instrument Conditions:	1		

NOTES

Method is assay and degradation products method (analysis = 91)
 Mobile phase additive is ~10 mM Ammonium acetate
 Az150 is on a low level (energy standard which isn't captured specifically in the above table. It is prepared in the same volumes as the sensitivity standard, so I have added an extra preparation there to account for this.
 Phase 3 validated

Method Number:

Technique:	UPLC
Instrument energy (kW):	0.9
Number of analyses of interest:	1
Number of injections/run for each analysis:	15

Greenness Score

1336.23

Instrument Energy Score	4288	% of greenness score
Solvent Energy Score	1101.96	82.5%
Solvent EHS Score	193.197	14.3%

Stock standard prep volume (mL):	100
Number of Stock standard preps:	2

Stock standard diluent	Volume per prep	Density	EHS	EHS Score per prep	EHS Score all preps	CEO/10	Solvent Energy Score per prep	Solvent Energy Score all preps
Solvent 1	95 mL	0.792	0.272	20.491	40.982	1.850	139.194	278.388
Solvent 2	5 mL	1.000	0.319	1.595	3.191	0.001	0.005	0.010
Solvent 3	0 mL	0.000	0.000	0.000	0.000	0.000	0.000	0.000

Working Standard prep volume (mL):	100
Number of Working standard preps:	2

Standard diluent	Volume per prep	Density	EHS	EHS Score per prep	EHS Score all preps	CEO/10	Solvent Energy Score per prep	Solvent Energy Score all preps
Solvent 1	95 mL	0.792	0.272	20.491	40.982	1.850	139.194	278.388
Solvent 2	5 mL	1.000	0.319	1.595	3.191	0.001	0.005	0.010
Solvent 3	0 mL	0.000	0.000	0.000	0.000	0.000	0.000	0.000

Sample prep volume (mL):	100
Number of sample preps:	2

Sample diluent	Volume per prep	Density	EHS	EHS Score per prep	EHS Score all preps	CEO/10	Solvent Energy Score per prep	Solvent Energy Score all preps
Solvent 1	95 mL	0.792	0.272	20.491	40.982	1.850	139.194	278.388
Solvent 2	5 mL	1.000	0.319	1.595	3.191	0.001	0.005	0.010
Solvent 3	0 mL	0.000	0.000	0.000	0.000	0.000	0.000	0.000

SST prep volume (mL):	50
Number of SST preps:	1

SST diluent	Volume per prep	Density	EHS	EHS Score per prep	EHS Score all preps	CEO/10	Solvent Energy Score per prep	Solvent Energy Score all preps
Solvent 1	47.5 mL	0.792	0.272	10.246	10.246	1.850	69.597	69.597
Solvent 2	2.5 mL	1.000	0.319	0.798	0.798	0.001	0.005	0.005
Solvent 3	0 mL	0.000	0.000	0.000	0.000	0.000	0.000	0.000

Sensitivity Soln prep volume (mL):	100
Number of Sensitivity Soln preps:	1

Sensitivity Soln prep volume (mL)	Volume per prep	Density	EHS	EHS Score per prep	EHS Score all preps	CEO/10	Solvent Energy Score per prep	Solvent Energy Score all preps
Solvent 1	95 mL	0.792	0.272	20.491	20.491	1.850	139.194	139.194
Solvent 2	5 mL	1.000	0.319	1.595	1.595	0.001	0.005	0.005
Solvent 3	0 mL	0.000	0.000	0.000	0.000	0.000	0.000	0.000

Mobile phase A

Solvent	Volume per injection	Density	EHS	EHS Score per prep	EHS Score all preps	CEO/10	Solvent Energy Score per injection	Solvent Energy Score all injections
Solvent 1	0.76 mL	1.000	0.319	0.244	0.244	0.001	0.001	0.011
Solvent 2	0.00 mL	0.000	0.000	0.000	0.000	0.000	0.000	0.000
Solvent 3	0.00 mL	0.000	0.000	0.000	0.000	0.000	0.000	0.000

Mobile phase B

Solvent	Volume per injection	Density	EHS	EHS Score per prep	EHS Score all preps	CEO/10	Solvent Energy Score per injection	Solvent Energy Score all injections
Solvent 1	0.84 mL	0.796	2.241	1.472	22.085	5.880	3.864	57.956
Solvent 2	0.00 mL	0.000	0.000	0.000	0.000	0.000	0.000	0.000
Solvent 3	0.00 mL	0.000	0.000	0.000	0.000	0.000	0.000	0.000

Flow rate (mL/min): 0.8

Run time (min/injection): 2

Gradient	Time (min)	%A	%B	A	B	MIP volume per gradient step (mL)	Total MIP volume per injection (mL)
0	0	95	5	0.261	0.014	0.275	0.275
1	1.5	2	98	0.143	0.014	0.157	0.432
2	1.9	98	5	0.044	0.044	0.088	0.520
3	5	95	5	0.08	0.00	0.08	0.600
4	100	100	0.00	0.00	0.00	0.00	0.600
5	100	100	0.00	0.00	0.00	0.00	0.600
6	100	100	0.00	0.00	0.00	0.00	0.600
7	100	100	0.00	0.00	0.00	0.00	0.600
8	100	100	0.00	0.00	0.00	0.00	0.600
9	100	100	0.00	0.00	0.00	0.00	0.600
10	100	100	0.00	0.00	0.00	0.00	0.600
11	100	100	0.00	0.00	0.00	0.00	0.600
12	100	100	0.00	0.00	0.00	0.00	0.600
13	100	100	0.00	0.00	0.00	0.00	0.600
14	100	100	0.00	0.00	0.00	0.00	0.600
15	100	100	0.00	0.00	0.00	0.00	0.600
16	100	100	0.00	0.00	0.00	0.00	0.600
17	100	100	0.00	0.00	0.00	0.00	0.600
18	100	100	0.00	0.00	0.00	0.00	0.600
19	100	100	0.00	0.00	0.00	0.00	0.600
20	100	100	0.00	0.00	0.00	0.00	0.600
21	100	100	0.00	0.00	0.00	0.00	0.600
22	100	100	0.00	0.00	0.00	0.00	0.600
23	100	100	0.00	0.00	0.00	0.00	0.600
24	100	100	0.00	0.00	0.00	0.00	0.600
25	100	100	0.00	0.00	0.00	0.00	0.600
26	100	100	0.00	0.00	0.00	0.00	0.600
27	100	100	0.00	0.00	0.00	0.00	0.600
28	100	100	0.00	0.00	0.00	0.00	0.600
29	100	100	0.00	0.00	0.00	0.00	0.600
30	100	100	0.00	0.00	0.00	0.00	0.600
31	100	100	0.00	0.00	0.00	0.00	0.600
32	100	100	0.00	0.00	0.00	0.00	0.600
33	100	100	0.00	0.00	0.00	0.00	0.600
34	100	100	0.00	0.00	0.00	0.00	0.600
35	100	100	0.00	0.00	0.00	0.00	0.600
36	100	100	0.00	0.00	0.00	0.00	0.600
37	100	100	0.00	0.00	0.00	0.00	0.600
38	100	100	0.00	0.00	0.00	0.00	0.600
39	100	100	0.00	0.00	0.00	0.00	0.600
40	100	100	0.00	0.00	0.00	0.00	0.600
41	100	100	0.00	0.00	0.00	0.00	0.600
42	100	100	0.00	0.00	0.00	0.00	0.600
43	100	100	0.00	0.00	0.00	0.00	0.600
44	100	100	0.00	0.00	0.00	0.00	0.600
45	100	100	0.00	0.00	0.00	0.00	0.600
46	100	100	0.00	0.00	0.00	0.00	0.600
47	100	100	0.00	0.00	0.00	0.00	0.600
48	100	100	0.00	0.00	0.00	0.00	0.600
49	100	100	0.00	0.00	0.00	0.00	0.600
50	100	100	0.00	0.00	0.00	0.00	0.600
51	100	100	0.00	0.00	0.00	0.00	0.600
52	100	100	0.00	0.00	0.00	0.00	0.600
53	100	100	0.00	0.00	0.00	0.00	0.600
54	100	100	0.00	0.00	0.00	0.00	0.600
55	100	100	0.00	0.00	0.00	0.00	0.600
56	100	100	0.00	0.00	0.00	0.00	0.600
57	100	100	0.00	0.00	0.00	0.00	0.600
58	100	100	0.00	0.00	0.00	0.00	0.600
59	100	100	0.00	0.00	0.00	0.00	0.600
60	100	100	0.00	0.00	0.00	0.00	0.600
61	100	100	0.00	0.00	0.00	0.00	0.600
62	100	100	0.00	0.00	0.00	0.00	0.600
63	100	100	0.00	0.00	0.00	0.00	0.600
64	100	100	0.00	0.00	0.00	0.00	0.600
65	100	100	0.00	0.00	0.00	0.00	0.600
66	100	100	0.00	0.00	0.00	0.00	0.600
67	100	100	0.00	0.00	0.00	0.00	0.600
68	100	100	0.00	0.00	0.00	0.00	0.600
69	100	100	0.00	0.00	0.00	0.00	0.600
70	100	100	0.00	0.00	0.00	0.00	0.600
71	100	100	0.00	0.00	0.00	0.00	0.600
72	100	100	0.00	0.00	0.00	0.00	0.600
73	100	100	0.00	0.00	0.00	0.00	0.600
74	100	100	0.00	0.00	0.00	0.00	0.600
75	100	100	0.00	0.00	0.00	0.00	0.600
76	100	100	0.00	0.00	0.00	0.00	0.600
77	100	100	0.00	0.00	0.00	0.00	0.600
78	100	100	0.00	0.00	0.00	0.00	0.600
79	100	100	0.00	0.00	0.00	0.00	0.600
80	100	100	0.00	0.00	0.00	0.00	0.600
81	100	100	0.00	0.00	0.00	0.00	0.600
82	100	100	0.00	0.00	0.00	0.00	0.600
83	100	100	0.00	0.00	0.00	0.00	0.600
84	100	100	0.00	0.00	0.00	0.00	0.600
85	100	100	0.00	0.00	0.00	0.00	0.600
86	100	100	0.00	0.00	0.00	0.00	0.600
87	100	100	0.00	0.00	0.00	0.00	0.600
88	100	100	0.00	0.00	0.00	0.00	0.600
89	100	100	0.00	0.00	0.00	0.00	0.600
90	100	100	0.00	0.00	0.00	0.00	0.600
91	100	100	0.00	0.00	0.00	0.00	0.600
92	100	100	0.00	0.00	0.00	0.00	0.600
93	100	100	0.00	0.00	0.00	0.00	0.600
94	100	100	0.00	0.00	0.00	0.00	0.600
95	100	100	0.00	0.00	0.00	0.00	0.600
96	100	100	0.00	0.00	0.00	0.00	0.600
97	100	100	0.00	0.00	0.00	0.00	0.600
98	100	100	0.00	0.00	0.00	0.00	0.600
99	100	100	0.00	0.00	0.00	0.00	0.600
100	100	100	0.00	0.00	0.00	0.00	0.600

NOTES

GC at all compounds substituted: both low and high pH (formic acid and ammonium hydroxide)

Method Number: _____

Technique:	UPLC
Instrument energy (kV):	0.9
Number of analyses of interest:	1
Number of injections/run for each analysis:	15

Instrument Energy Score	600.32	% of greenness score	14.3%
Solvent Energy Score	2114.69		55.3%
Solvent EHS Score	12.2231		30.4%

Greenness Score 4187.92

Stock standard prep volume (ml):	
Number of Stock standard preps:	

Stock standard diluent	Volume per prep	Density	EHS	EHS Score per prep	EHS Score all preps	CEO/10	Solvent Energy Score per prep	Solvent Energy Score all preps
Solvent 1	0.000	0.000	0.200	0.000	0.000	0.000	0.000	0.000
Solvent 2	0.000	0.000	0.000	0.000	0.000	0.000	0.000	0.000
Solvent 3	0.000	0.000	0.000	0.000	0.000	0.000	0.000	0.000
Working Standard prep volume (ml):	25							
Number of Working standard preps:	2							

Standard diluent	Volume per prep	Density	EHS	EHS Score per prep	EHS Score all preps	CEO/10	Solvent Energy Score per prep	Solvent Energy Score all preps
Solvent 1	15 mL	1.000	0.319	4.786	9.573	35.223	5.880	48.217
Solvent 2	10 mL	0.786	2.241	17.611	17.611	0.000	0.000	92.434
Solvent 3	0.000	0.000	0.000	0.000	0.000	0.000	0.000	0.000

Sample prep volume (ml):	500
Number of sample preps:	2

SAMPLE

Sample diluent	Volume per prep	Density	EHS	EHS Score per prep	EHS Score all preps	CEO/10	Solvent Energy Score per prep	Solvent Energy Score all preps
Solvent 1	300 mL	1.000	0.319	95.728	191.455	0.001	0.300	0.600
Solvent 2	200 mL	0.786	2.241	352.227	704.454	5.880	924.385	1848.572
Solvent 3	0.000	0.000	0.000	0.000	0.000	0.000	0.000	0.000

SST prep volume (ml):	25
Number of SST preps:	1

SST

SST diluent	Volume per prep	Density	EHS	EHS Score per prep	EHS Score all preps	CEO/10	Solvent Energy Score per prep	Solvent Energy Score all preps
Solvent 1	15 mL	1.000	0.319	4.786	4.786	0.001	0.015	0.015
Solvent 2	10 mL	0.786	2.241	17.611	17.611	0.000	46.217	46.217
Solvent 3	0.000	0.000	0.000	0.000	0.000	0.000	0.000	0.000

Sensitivity Soln prep volume (ml):	200
Number of Sensitivity Soln preps:	2

SENSITIVITY

Seen by 2.0m diluent	Volume per prep	Density	EHS	EHS Score per prep	EHS Score all preps	CEO/10	Solvent Energy Score per prep	Solvent Energy Score all preps
Solvent 1	200 mL	1.000	0.319	63.818	127.637	0.001	0.200	0.400
Solvent 2	0.000	0.000	0.000	0.000	0.000	0.000	0.000	0.000
Solvent 3	0.000	0.000	0.000	0.000	0.000	0.000	0.000	0.000

MOBILE PHASES

Mobile phase A	Volume per injection	Density	EHS	EHS Score per prep	EHS Score all preps	CEO/10	Solvent Energy Score per injection	Solvent Energy Score all injections
Solvent 1	11.57 mL	1.000	0.319	3.693	55.392	0.001	0.012	0.174
Solvent 2	0.000	0.000	0.000	0.000	0.000	0.000	0.000	0.000
Solvent 3	0.000	0.000	0.000	0.000	0.000	0.000	0.000	0.000

MOBILE PHASE B

Mobile phase B	Volume per injection	Density	EHS	EHS Score per prep	EHS Score all preps	CEO/10	Solvent Energy Score per injection	Solvent Energy Score all injections
Solvent 1	4.70 mL	0.786	2.241	8.285	134.728	5.880	21.743	326.139
Solvent 2	0.52 mL	1.000	0.319	0.167	2.502	0.001	0.001	0.008
Solvent 3	0.00 mL	0.000	0.000	0.000	0.000	0.000	0.000	0.000

Flow rate (ml/min):	0.6
Run time (min/injection):	28

INSTRUMENT CONDITIONS

Gradient	%A	%B	A	B	MIP volume per gradient step (ml)
0	94	6	0.56	0.04	
1	83	17	1.00	0.14	
8	83	17	1.99	0.43	
20	66	34	5.36	1.84	
22	0	100	0.40	0.80	
25	0	100	0.00	1.80	
26	0	100	0.00	0.10	
28	94	6	1.64	0.10	
		100	0.00	0.00	
			11.57	5.23	

NOTES

--

Method Number:

Greenness Score 64112.27

Technique:	HPLC
Instrument energy (MJ):	1.0
Number of analyses of interest:	1
Number of injections/run for each analysis:	15

Instrument Energy Score	100.0/64	% of greenness score	15.7%
Solvent Energy Score	3478.78		54.3%
Solvent EHS Score	1928.85		30.17%

Stock standard prep volume (ml):

Stock standard prep volume (ml):		Solvent Energy Score per prep:		Solvent Energy Score all preps:	
----------------------------------	--	--------------------------------	--	---------------------------------	--

Stock standard diluent	Volume per prep	Density	EHS	EHS Score per prep	EHS Score all preps	CEO/JO	Solvent Energy Score per prep	Solvent Energy Score all preps
Solvent 1	0.000	0.000	0.000	0.000	0.000	0.000	0.000	0.000
Solvent 2	0.000	0.000	0.000	0.000	0.000	0.000	0.000	0.000
Solvent 3	0.000	0.000	0.000	0.000	0.000	0.000	0.000	0.000

Working Standard prep volume (ml):

Working Standard prep volume (ml):		Solvent Energy Score per prep:		Solvent Energy Score all preps:	
------------------------------------	--	--------------------------------	--	---------------------------------	--

Standard diluent	Volume per prep	Density	EHS	EHS Score per prep	EHS Score all preps	CEO/JO	Solvent Energy Score per prep	Solvent Energy Score all preps
Solvent 1	15 mL	1.000	0.319	4.786	191.455	0.001	0.015	0.600
Solvent 2	10 mL	0.786	2.241	35.2727	794.654	5.880	46.217	92.434
Solvent 3	0 mL	0.000	0.000	0.000	0.000	0.000	0.000	0.000

Sample prep volume (ml):

Sample prep volume (ml):		Solvent Energy Score per prep:		Solvent Energy Score all preps:	
--------------------------	--	--------------------------------	--	---------------------------------	--

Sample diluent	Volume per prep	Density	EHS	EHS Score per prep	EHS Score all preps	CEO/JO	Solvent Energy Score per prep	Solvent Energy Score all preps
Solvent 1	300 mL	1.000	0.319	95.728	191.455	0.001	0.300	0.600
Solvent 2	200 mL	0.786	2.241	35.2727	794.654	5.880	92.385	186.872
Solvent 3	0 mL	0.000	0.000	0.000	0.000	0.000	0.000	0.000

SST prep volume (ml):

SST prep volume (ml):		Solvent Energy Score per prep:		Solvent Energy Score all preps:	
-----------------------	--	--------------------------------	--	---------------------------------	--

SST diluent	Volume per prep	Density	EHS	EHS Score per prep	EHS Score all preps	CEO/JO	Solvent Energy Score per prep	Solvent Energy Score all preps
Solvent 1	15 mL	1.000	0.319	4.786	191.455	0.001	0.015	0.015
Solvent 2	10 mL	0.786	2.241	17.611	17.611	5.880	46.217	46.217
Solvent 3	0 mL	0.000	0.000	0.000	0.000	0.000	0.000	0.000

Sensitivity Soln prep volume (ml):

Sensitivity Soln prep volume (ml):		Solvent Energy Score per prep:		Solvent Energy Score all preps:	
------------------------------------	--	--------------------------------	--	---------------------------------	--

Sensitivity Soln prep volume (ml):	Volume per prep	Density	EHS	EHS Score per prep	EHS Score all preps	CEO/JO	Solvent Energy Score per prep	Solvent Energy Score all preps
Solvent 1	200 mL	1.000	0.319	63.818	127.637	0.001	0.200	0.400
Solvent 2	0 mL	0.000	0.000	0.000	0.000	0.000	0.000	0.000
Solvent 3	0 mL	0.000	0.000	0.000	0.000	0.000	0.000	0.000

Mobile phase A

Mobile phase A	Volume per injection	Density	EHS	EHS Score per prep	EHS Score all preps	CEO/JO	Solvent Energy Score per injection	Solvent Energy Score all injections
Solvent 1	54.13 mL	1.000	0.319	17.271	259.068	0.001	0.054	0.812
Solvent 2	0.00 mL	0.000	0.000	0.000	0.000	0.000	0.000	0.000
Solvent 3	0.00 mL	0.000	0.000	0.000	0.000	0.000	0.000	0.000

Mobile phase B

Mobile phase B	Volume per injection	Density	EHS	EHS Score per prep	EHS Score all preps	CEO/JO	Solvent Energy Score per injection	Solvent Energy Score all injections
Solvent 1	21.49 mL	0.786	2.241	37.814	567.612	0.001	0.020	1.489.583
Solvent 2	2.59 mL	1.000	0.319	0.782	11.427	0.001	0.002	0.035
Solvent 3	0.00 mL	0.000	0.000	0.000	0.000	0.000	0.000	0.000

Flow rate (ml/min):

Flow rate (ml/min):		Run Time (min/injection)	
---------------------	--	--------------------------	--

Gradient	Time (min)	%A	%B	A	B
	0	94	6	2.82	0.18
	1.5	94	6	7.13	1.44
	11.5	88	12	9.13	1.87
	29	66	34	26.08	8.93
	31.5	0	100	1.65	3.35
	35.5	0	100	0.00	6.00
	39	0	100	6.38	0.41
	39	94	6	0.00	0.00
			100	0.00	0.00
				54.13	23.87

INSTRUMENT CONDITIONS

MOBILE PHASES

SENSITIVITY

SST

SAMPLE

STANDARDS

METHOD

NOTES

--

Method Number: 26-3FC-published method

Technique:	SFC
Instrument energy (kV):	1.2
Number of analyses of interest:	2
Number of injections/run for each analysis:	15

Instrument Energy Score	74.80	% of greenness score	22.3%
Solvent Energy Score	227.11		67.7%
Solvent EHS Score	3.244		10.0%

Greenness Score 335.35

Stock standard prep volume (mL):	50
Number of Stock standard preps:	1

Stock standard diluent	Volume per prep	Density	EHS	EHS Score per prep	EHS Score all preps	CE0/10	Solvent Energy Score per prep	Solvent Energy Score all preps
Solvent 1	50 mL	0.792	0.272	10.785	10.785	1.850	73.160	73.160
Solvent 2	0 mL	0.000	0.000	0.000	0.000	0.000	0.000	0.000
Solvent 3	0 mL	0.000	0.000	0.000	0.000	0.000	0.000	0.000

Working Standard prep volume (mL):	50
Number of Working standard preps:	2

Standard diluent	Volume per prep	Density	EHS	EHS Score per prep	EHS Score all preps	CE0/10	Solvent Energy Score per prep	Solvent Energy Score all preps
Solvent 1	50 mL	0.792	0.272	10.785	21.570	1.850	73.160	146.320
Solvent 2	0 mL	0.000	0.000	0.000	0.000	0.000	0.000	0.000
Solvent 3	0 mL	0.000	0.000	0.000	0.000	0.000	0.000	0.000

Sample prep volume (mL):	50
Number of sample preps:	1

Sample diluent	Volume per prep	Density	EHS	EHS Score per prep	EHS Score all preps	CE0/10	Solvent Energy Score per prep	Solvent Energy Score all preps
Solvent 1	50 mL	0.792	0.272	10.785	10.785	1.850	73.160	73.160
Solvent 2	0 mL	0.000	0.000	0.000	0.000	0.000	0.000	0.000
Solvent 3	0 mL	0.000	0.000	0.000	0.000	0.000	0.000	0.000

SST prep volume (mL):	50
Number of SST preps:	1

SST diluent	Volume per prep	Density	EHS	EHS Score per prep	EHS Score all preps	CE0/10	Solvent Energy Score per prep	Solvent Energy Score all preps
Solvent 1	50 mL	0.792	0.272	10.785	10.785	1.850	73.160	73.160
Solvent 2	0 mL	0.000	0.000	0.000	0.000	0.000	0.000	0.000
Solvent 3	0 mL	0.000	0.000	0.000	0.000	0.000	0.000	0.000

Sensitivity Soln prep volume (mL):	
Number of Sensitivity Soln preps:	

Sensitivity Soln prep	Volume per prep	Density	EHS	EHS Score per prep	EHS Score all preps	CE0/10	Solvent Energy Score per prep	Solvent Energy Score all preps
Solvent 1	0 mL	0.792	0.272	0.000	0.000	1.850	0.000	0.000
Solvent 2	0 mL	0.000	0.000	0.000	0.000	0.000	0.000	0.000
Solvent 3	0 mL	0.000	0.000	0.000	0.000	0.000	0.000	0.000

MOBILE PHASE A

Solvent	Percent	Volume per injection	Density	EHS	EHS Score per prep	EHS Score all preps	CE0/10	Solvent Energy Score per injection	Solvent Energy Score all injections
Solvent 1	100	16.00 mL	0.002	0.218	0.001	0.018	0.001	0.000	0.000
Solvent 2		0.00 mL	0.000	0.000	0.000	0.000	0.000	0.000	0.000
Solvent 3		0.00 mL	0.000	0.000	0.000	0.000	0.000	0.000	0.000

MOBILE PHASE B

Solvent	Percent	Volume per injection	Density	EHS	EHS Score per prep	EHS Score all preps	CE0/10	Solvent Energy Score per injection	Solvent Energy Score all injections
Solvent 1	100	4.00 mL	0.792	0.272	0.813	12.592	1.850	5.881	87.912
Solvent 2		0.00 mL	0.000	0.000	0.000	0.000	0.000	0.000	0.000
Solvent 3		0.00 mL	0.000	0.000	0.000	0.000	0.000	0.000	0.000

Flow rate (mL/min):	4
Run time (min/injection):	5

Gradient	Time (min)	%A	%B	A	B
	0	80	20	16.00	4.00
	5	80	20	16.00	4.00
	10	80	20	16.00	4.00
	15	80	20	16.00	4.00
	20	80	20	16.00	4.00
	25	80	20	16.00	4.00
	30	80	20	16.00	4.00
	35	80	20	16.00	4.00
	40	80	20	16.00	4.00
	45	80	20	16.00	4.00
	50	80	20	16.00	4.00
	55	80	20	16.00	4.00
	60	80	20	16.00	4.00
	65	80	20	16.00	4.00
	70	80	20	16.00	4.00
	75	80	20	16.00	4.00
	80	80	20	16.00	4.00
	85	80	20	16.00	4.00
	90	80	20	16.00	4.00
	95	80	20	16.00	4.00
	100	80	20	16.00	4.00
	105	80	20	16.00	4.00
	110	80	20	16.00	4.00
	115	80	20	16.00	4.00
	120	80	20	16.00	4.00
	125	80	20	16.00	4.00
	130	80	20	16.00	4.00
	135	80	20	16.00	4.00
	140	80	20	16.00	4.00
	145	80	20	16.00	4.00
	150	80	20	16.00	4.00
	155	80	20	16.00	4.00
	160	80	20	16.00	4.00
	165	80	20	16.00	4.00
	170	80	20	16.00	4.00
	175	80	20	16.00	4.00
	180	80	20	16.00	4.00
	185	80	20	16.00	4.00
	190	80	20	16.00	4.00
	195	80	20	16.00	4.00
	200	80	20	16.00	4.00
	205	80	20	16.00	4.00
	210	80	20	16.00	4.00
	215	80	20	16.00	4.00
	220	80	20	16.00	4.00
	225	80	20	16.00	4.00
	230	80	20	16.00	4.00
	235	80	20	16.00	4.00
	240	80	20	16.00	4.00
	245	80	20	16.00	4.00
	250	80	20	16.00	4.00
	255	80	20	16.00	4.00
	260	80	20	16.00	4.00
	265	80	20	16.00	4.00
	270	80	20	16.00	4.00
	275	80	20	16.00	4.00
	280	80	20	16.00	4.00
	285	80	20	16.00	4.00
	290	80	20	16.00	4.00
	295	80	20	16.00	4.00
	300	80	20	16.00	4.00
	305	80	20	16.00	4.00
	310	80	20	16.00	4.00
	315	80	20	16.00	4.00
	320	80	20	16.00	4.00
	325	80	20	16.00	4.00
	330	80	20	16.00	4.00
	335	80	20	16.00	4.00
	340	80	20	16.00	4.00
	345	80	20	16.00	4.00
	350	80	20	16.00	4.00
	355	80	20	16.00	4.00
	360	80	20	16.00	4.00
	365	80	20	16.00	4.00
	370	80	20	16.00	4.00
	375	80	20	16.00	4.00
	380	80	20	16.00	4.00
	385	80	20	16.00	4.00
	390	80	20	16.00	4.00
	395	80	20	16.00	4.00
	400	80	20	16.00	4.00
	405	80	20	16.00	4.00
	410	80	20	16.00	4.00
	415	80	20	16.00	4.00
	420	80	20	16.00	4.00
	425	80	20	16.00	4.00
	430	80	20	16.00	4.00
	435	80	20	16.00	4.00
	440	80	20	16.00	4.00
	445	80	20	16.00	4.00
	450	80	20	16.00	4.00
	455	80	20	16.00	4.00
	460	80	20	16.00	4.00
	465	80	20	16.00	4.00
	470	80	20	16.00	4.00
	475	80	20	16.00	4.00
	480	80	20	16.00	4.00
	485	80	20	16.00	4.00
	490	80	20	16.00	4.00
	495	80	20	16.00	4.00
	500	80	20	16.00	4.00

NOTES

Method is assay and degradation products method (analysis = 7).
 Mobile phase additive is 0.05% TFA
 Az150 is on a low level (inert) standard which isn't captured specifically in the above table. It's prepared in a 1 x 200 mL volumetric flask. To account for this, I have added a (1600 nL) additional SST preparation. Please remove if this causes issues.
 Phase 3 validated!

