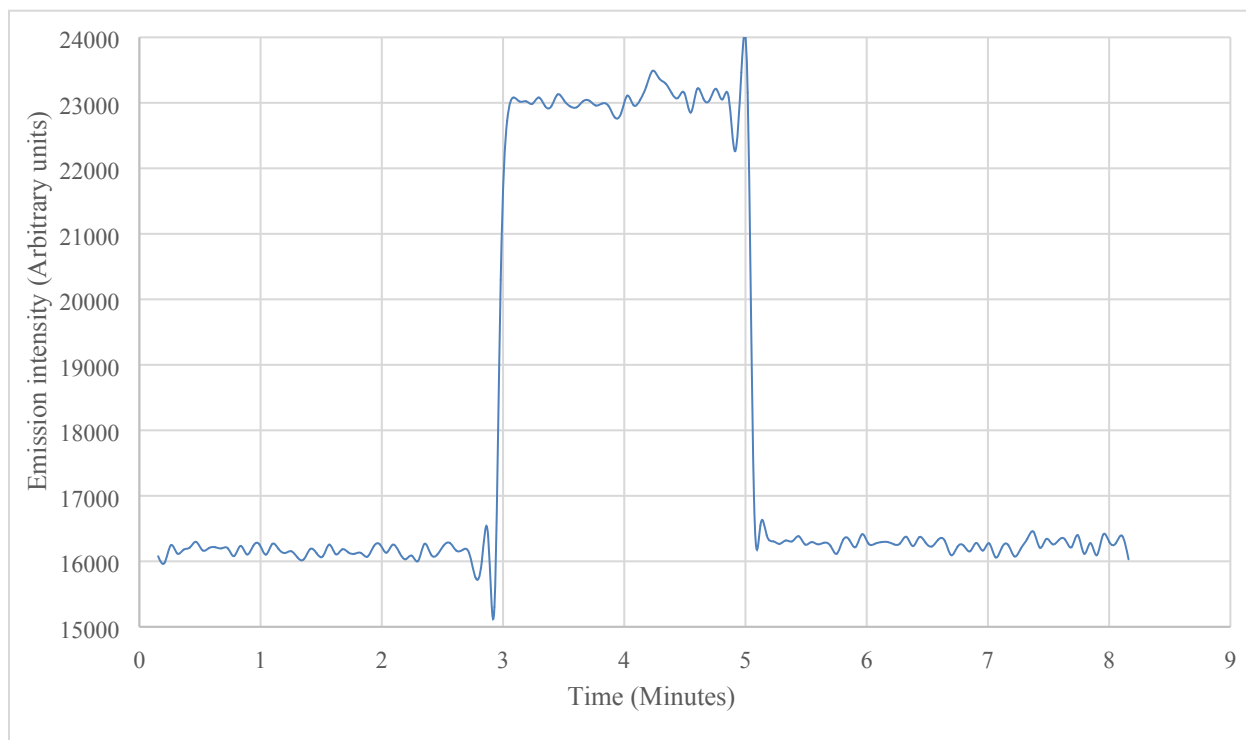
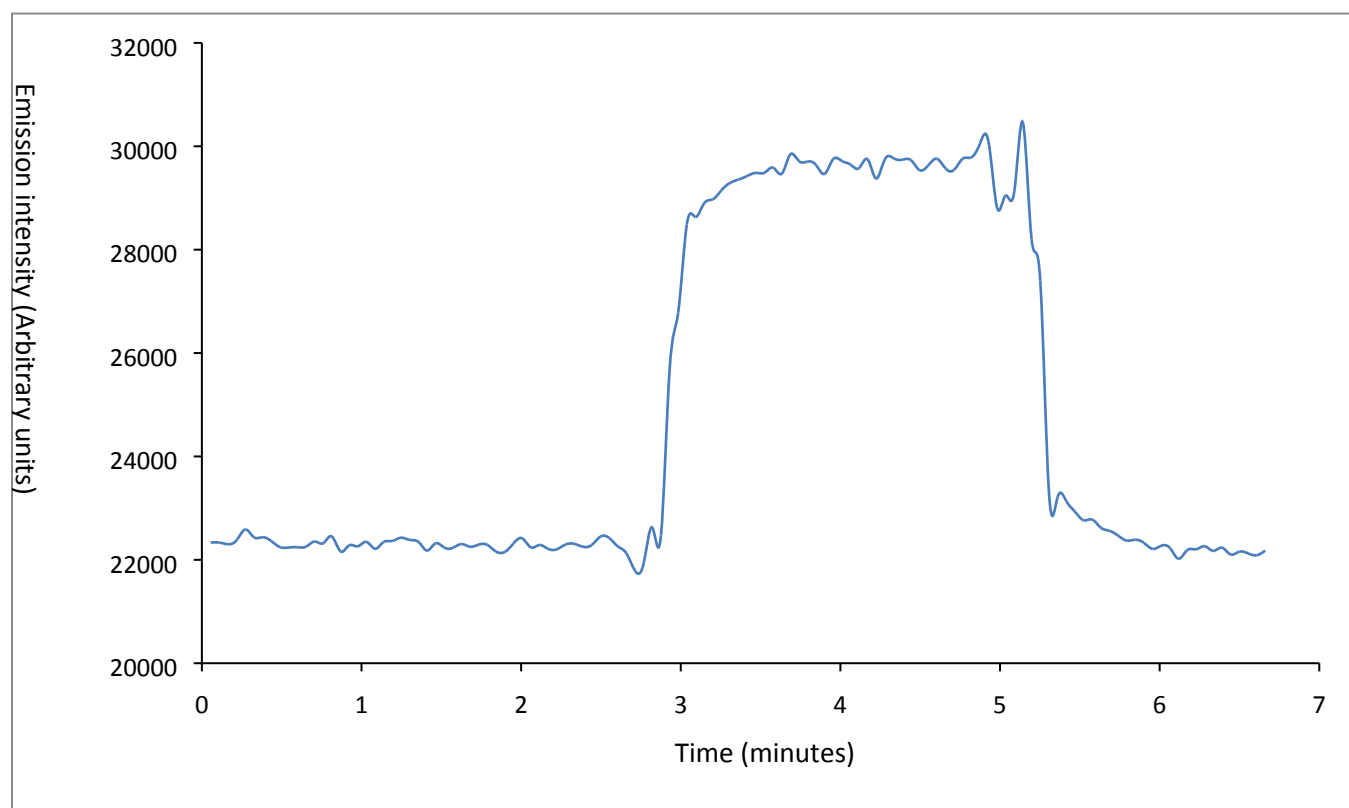


Supplementary Figures

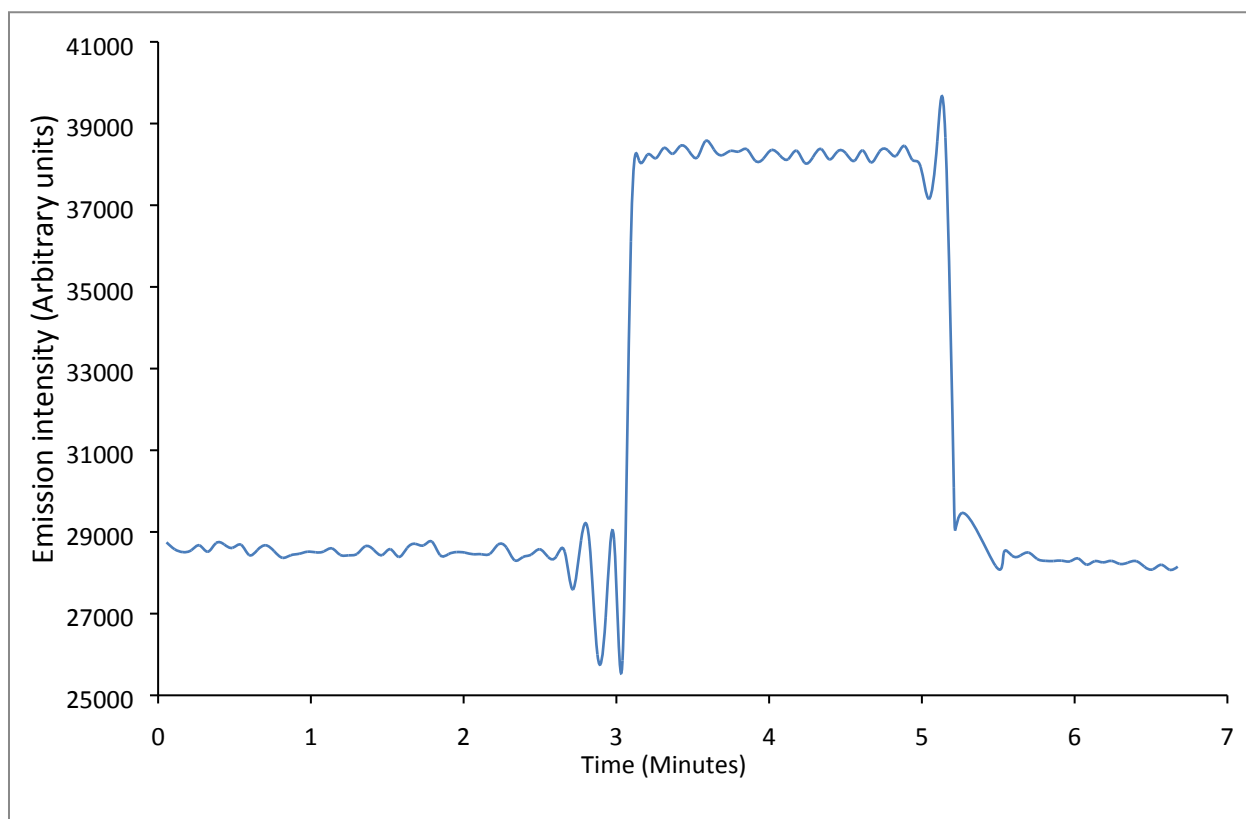
SF 1: Au (I) 267.595 spectra of aqueous gold solution being aspirated in and washed out of the MP-4100 by 1 % HCl



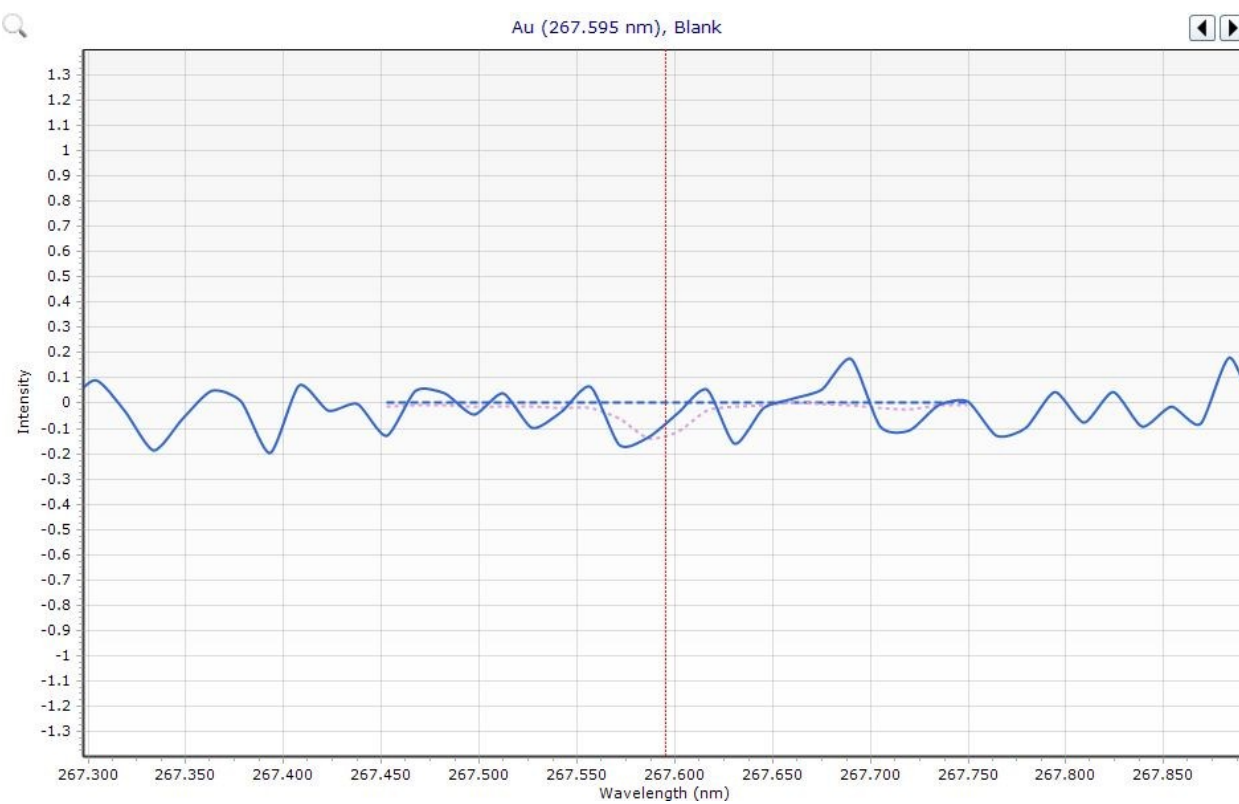
SF 2: Au (I) 267.595 spectra of 2-ethylhexanol gold solution being aspirated in and washed out of the MP-4100 by 3 M HCl extract



SF 3: Au (I) 267.595 spectra of MIBK gold solution being aspirated in and washed out of the MP-4100 from a 1 M HCl extract



SF 4: wavelength scan at gold wavelength 267.595, aspirating nitric acid



SF 5: Aspiration of $90 \mu\text{g L}^{-1}\text{Au}$ and $10 \text{ mg L}^{-1}\text{Fe}$ scan at gold wavelength 267.595

