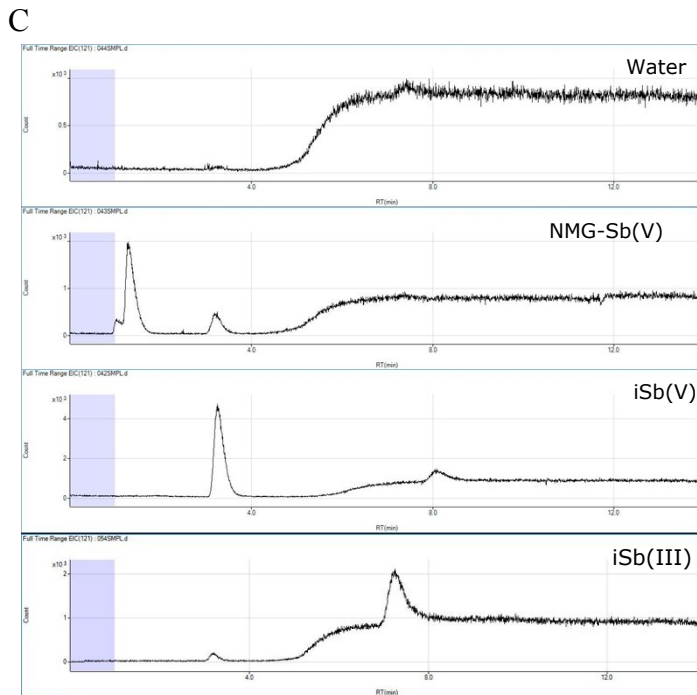
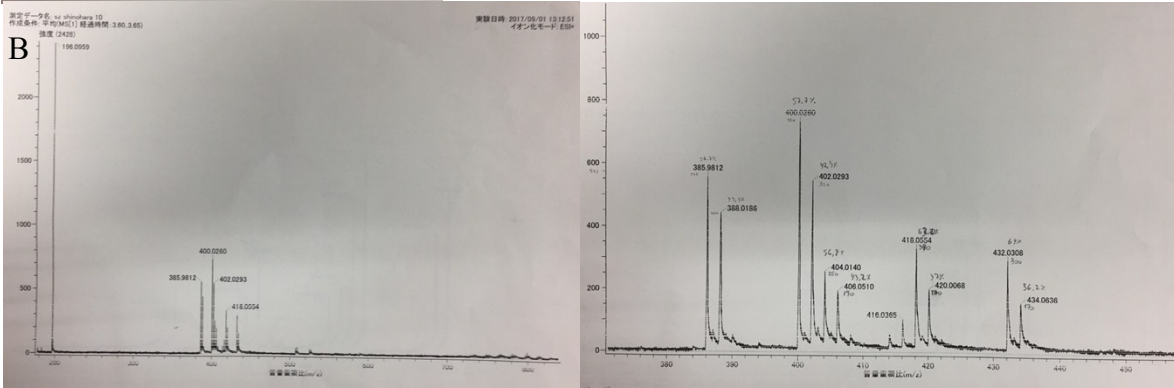
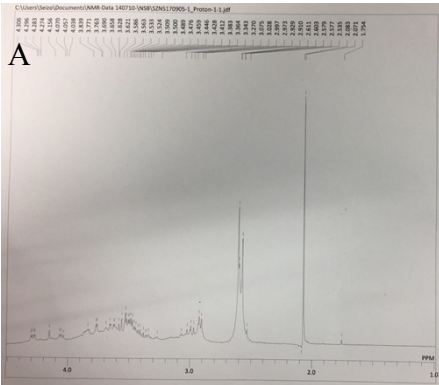
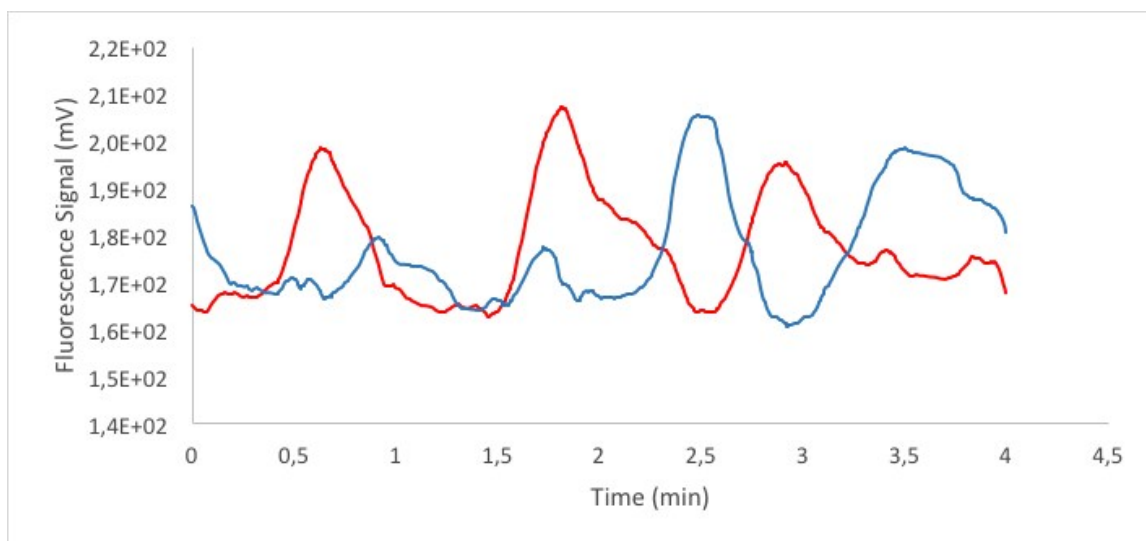


Supplementary Material



S.M Fig 1 NMG-Sb(V) Carcterization and Identification.A NMR-H. B. ESI-MS(+). C HPLC-ICP-MS

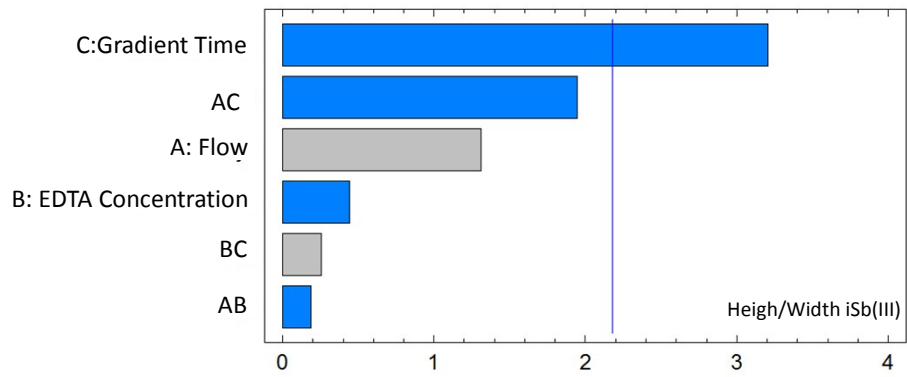
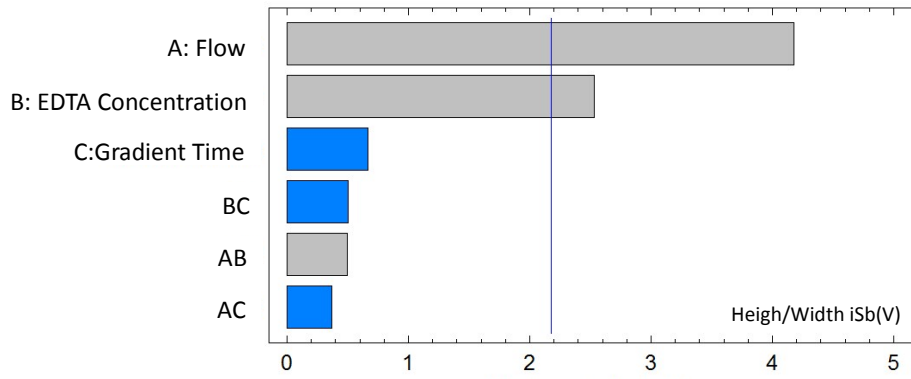
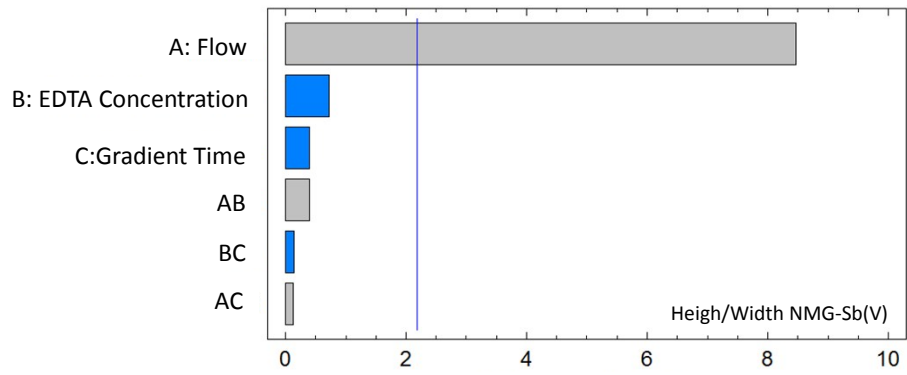


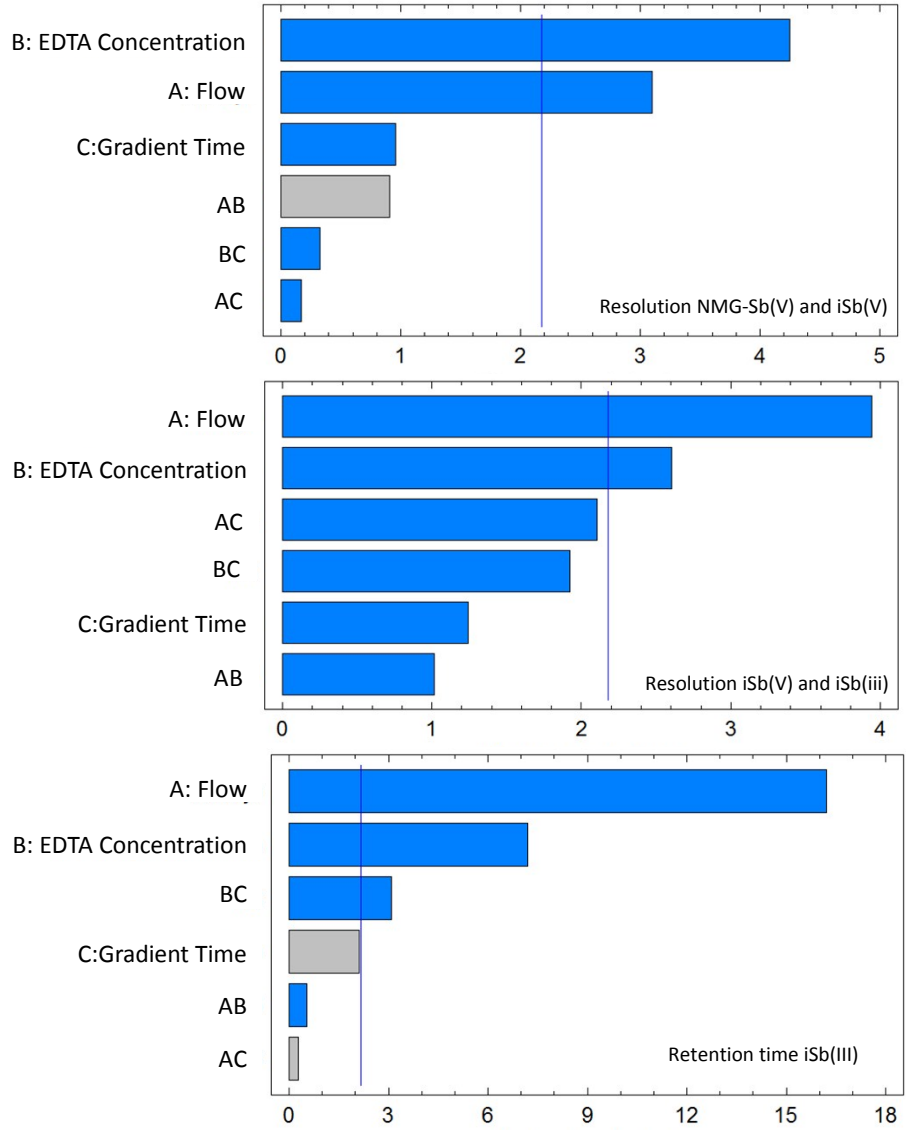
S.M Fig. 2. Fluorescence signal of NMG-Sb(V) (red line) and Blue iSb(V) (blue line)

S.M Table 1. Screening

X1	X2	X3	Resolution MA-Sb(V)	Resolution Sb(V)-Sb(III)	Coefficients (height/width)			Retention time Sb(III)
					MA	Sb(V)	Sb(III)	
-1	-1	-1	3,544	6,265	595,66	723,27	402,45	7,146
1	-1	-1	2,438	6,389	1226,4	1339,4	617,27	4,284
-1	1	-1	1,901	6,843	533,96	1180,3	296,91	6,497
1	1	-1	1,481	5,441	888,85	2046,6	333,11	3,678

-1	-1	1	4,032	7,089	661,17	528,89	166,51	8,442
1	-1	1	1,056	4,309	885,68	1202,62	61,245	5,285
-1	1	1	1,706	6,547	417,57	1251,87	99,218	6,511
1	1	1	1,368	0,128	974,68	1991,9	7,2450	3,610
0	0	0	3,250	7,245	679,60	998,76	457,37	6,010
0	0	0	3,218	8,005	828,56	1174,5	709,59	5,819
-1	-1	-1	3,682	6,505	530,09	762,18	184,24	7,206
1	-1	-1	3,031	5,785	979,88	1299,3	618,63	4,485
-1	1	-1	2,926	6,811	589,72	1009,1	283,70	6,840
1	1	-1	1,327	4,114	1178,7	1692,4	677,78	3,074
-1	-1	1	3,616	9,687	534,06	965,37	248,19	8,027
1	-1	1	3,182	5,596	1188,33	1329,0	199,57	5,204
-1	1	1	1,688	5,299	507,81	750,65	236,31	6,062
1	1	1	1,216	3,158	1158,9	1238,5	271,00	3,181
0	0	0	2,024	4,714	725,73	1067,9	285,62	4,663
0	0	0	2,421	6,035	747,47	1852,6	290,89	4,772
<i>R squared</i>			0,712	0,734	0,859	0,676	0,573	0,955





S.M Fig. 3. Pareto Diagrams

S.M Table 2. Quality parametrs of the surface response optimization

Optimize Deseability

Optimal value= 0,755829

<i>Factor</i>	<i>Low</i>	<i>High</i>	<i>Optimum</i>
Flow	-1,41421	1,41421	1,41421
Movil Phase	-1,41421	1,41421	1,41421

<i>Response</i>	<i>Optimum</i>
Heigh in Witdh I	1049,83
Heigh in Witdh II	1842,05

