

Supporting Information

## A Miniaturized Optical Tomography Platform for Volumetric Imaging of Engineered Living Systems

Adem Polat<sup>1,2,3‡</sup>, Shabir Hassan<sup>1‡</sup>, Isa Yildirim<sup>2,4</sup>, Luis Eduardo Oliver<sup>1</sup>, Maryam Mostafaei<sup>1,5</sup>, Siddharth Kumar<sup>1,6</sup>, Sushila Maharjan<sup>1,7</sup>, Louis Bourguet<sup>1</sup>, Xia Cao<sup>1,8</sup>, Guoliang Ying<sup>1,9</sup>, Milad Eyvazi Hesar<sup>1,10</sup>, Yu Shrike Zhang<sup>1\*</sup>

<sup>1</sup> Division of Engineering in Medicine, Department of Medicine, Brigham and Women's Hospital, Harvard Medical School, Cambridge, MA 02139, USA

<sup>2</sup> Istanbul Technical University, Faculty of Electrical and Electronics Engineering, Institute of Informatics, 34469, Maslak, Istanbul, Turkey

<sup>3</sup> Department of Electrical and Electronics Engineering, Adana Science and Technology University, Adana, Turkey

<sup>4</sup> College of Engineering, University of Illinois, Chicago, IL 60607, USA

<sup>5</sup> MAS Medical Physics, Department of Physics, ETH Zurich 8093, Switzerland

<sup>6</sup> BITS Pilani, K. K. Birla Goa Campus, Goa 403726, India

<sup>7</sup> Research Institute for Bioscience and Biotechnology, Nakkhu-4, Lalitpur 44600, Nepal

<sup>8</sup> Department of Pharmaceutics and Tissue Engineering, School of Pharmacy, Jiangsu University, Zhenjiang 212013, P.R. China

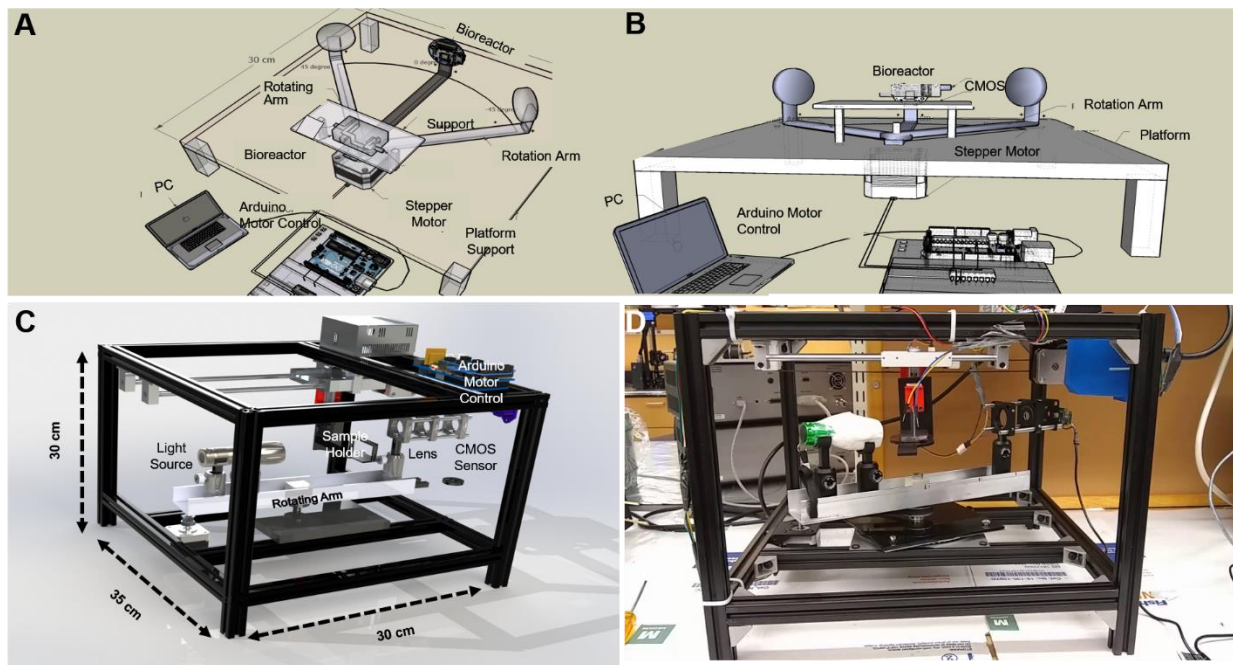
<sup>9</sup> School of Materials Science and Engineering, Wuhan Institute of Technology, Wuhan 430205, P.R. China

<sup>10</sup> Institute of Materials in Electrical Engineering 1 (IWE1), RWTH Aachen University, 52062 Aachen, Germany

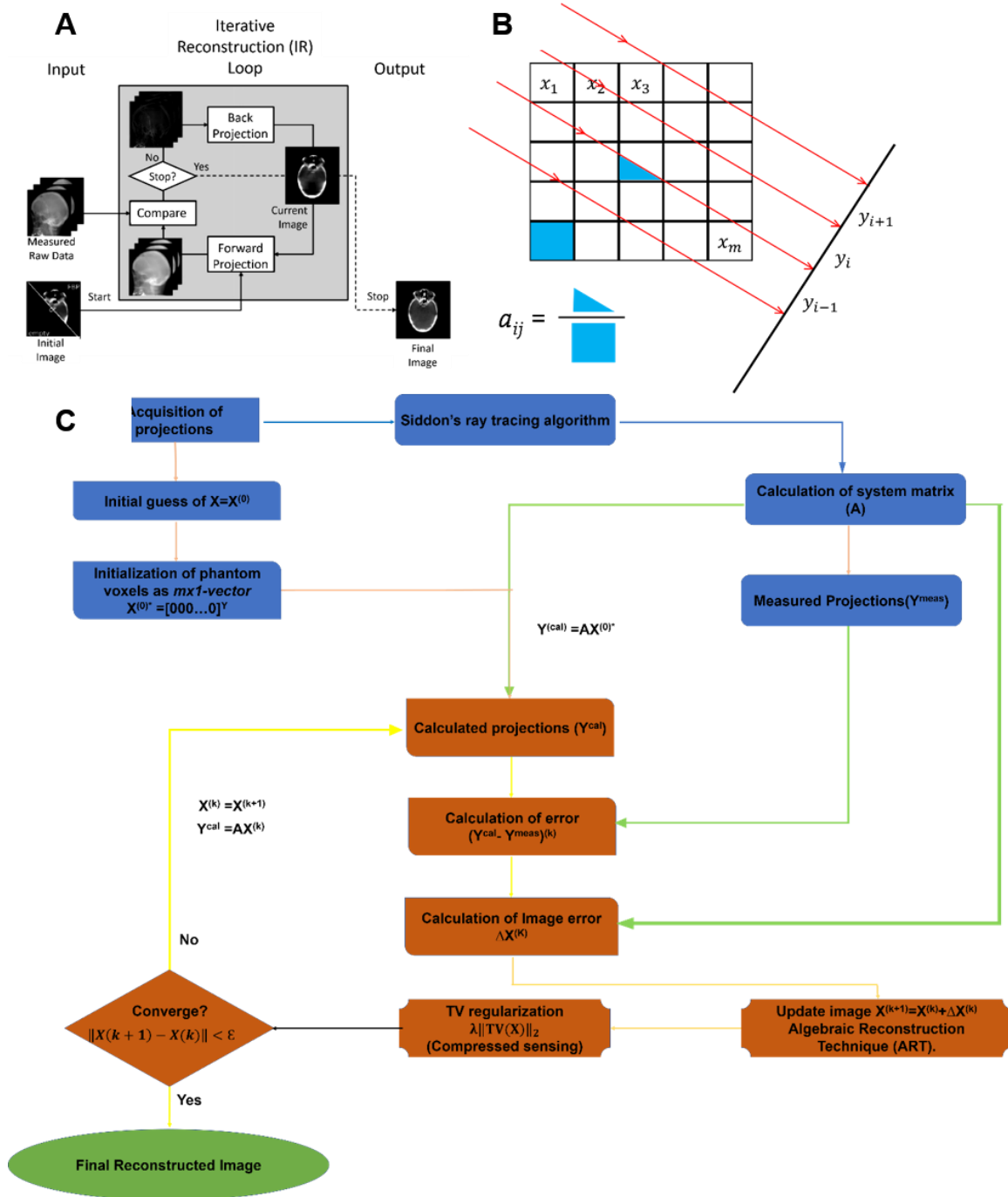
‡ Authors contributed equally

\* Corresponding author:

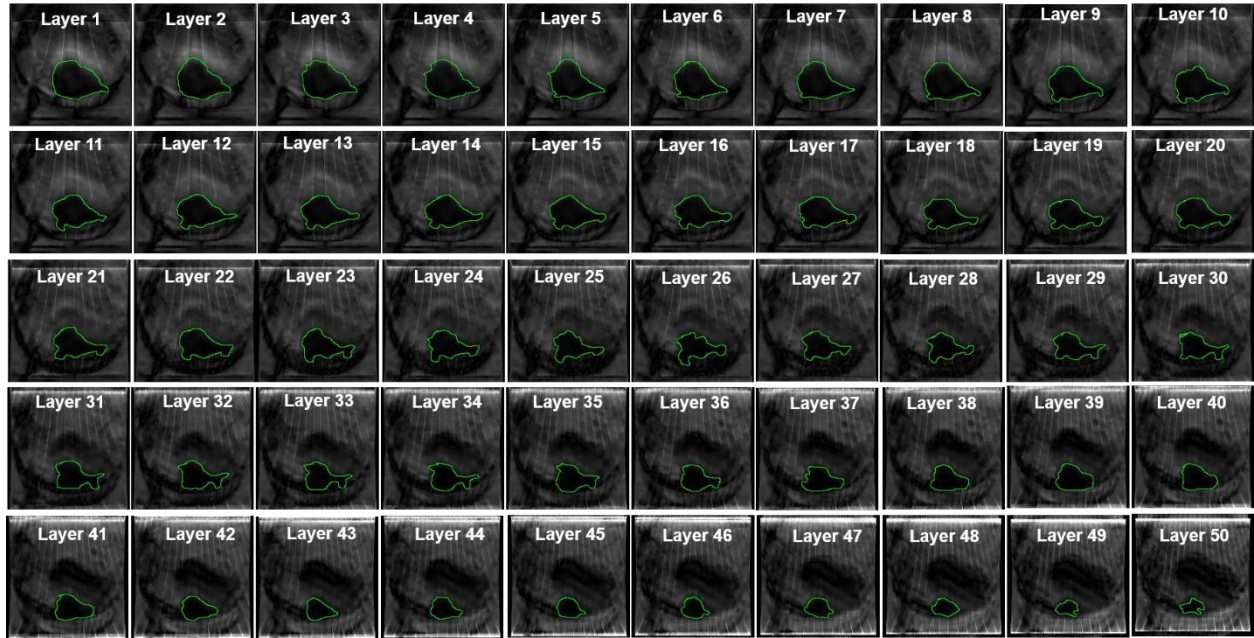
Brigham and Women's Hospital, Harvard Medical School, 65 Landsdowne St, Cambridge, MA 02139, USA; Email: [yszhang@research.bwh.harvard.edu](mailto:yszhang@research.bwh.harvard.edu)



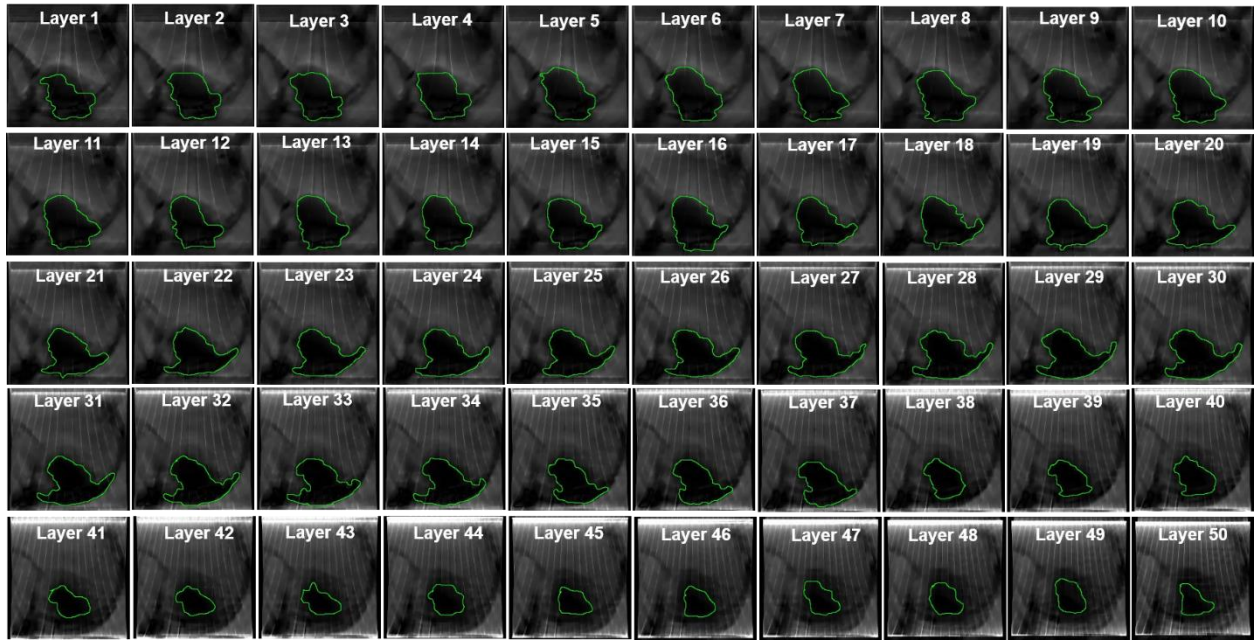
**Fig. S1** Opto-mechanical design of the mini-Opto platform. A) Top and B) side views of the optical, mechanical, and electronic components of the setup. C, D) Graphic rendition and picture of a working mini-Opto platform, respectively.



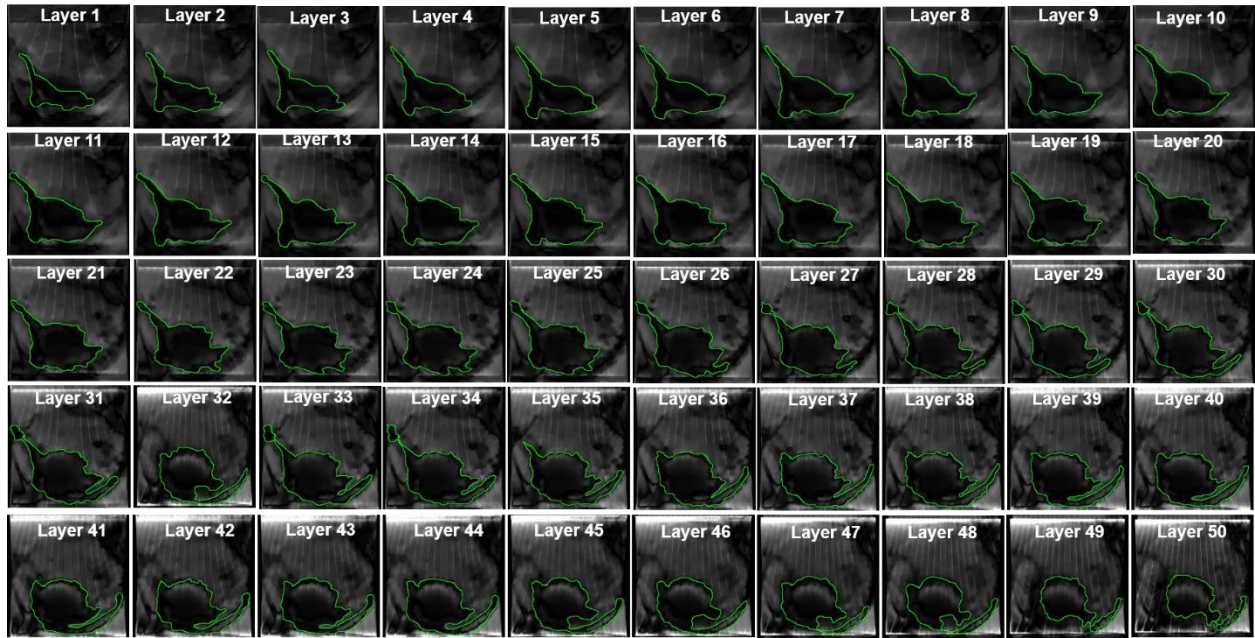
**Fig. S2** A) Schematic of the working steps of an iterative reconstruction algorithm, adapted with permission from <sup>47</sup>. B) Illustration of calculating of the weight factor  $a_{ij}$  in the ART algorithm, adapted with permission from <sup>33</sup>. C) Flowchart of the ART+TV<sub>3D</sub> algorithm.



**Fig. S3** Layer-by-layer volumetric information of the tumoroid on Day 2.



**Fig. S4** Layer-by-layer volumetric information of the tumoroid on Day 4.



**Fig. S5** Layer-by-layer volumetric information of the tumoroid on Day 6.

**Movie S1** Video of the reconstruction process showing how different objects inside a PDMS polymer gel evolve over different layers.

**Movie S2** Video of the reconstruction process showing how different layers of a bioprinted vascularized channel inside a hydrogel evolve over different layers.