

Supplementary Information

Antitumor effects of melanin from *Lachnum* YM226 and its derivative in H22 tumor-bearing mice

Fang Shi, Jinglei Li, Ziyang Ye, Liuqing Yang, Tingting Chen, Xue Chen*, Ming
Ye*

*School of Food Science and Engineering, Hefei University of Technology, Hefei
230009, China*

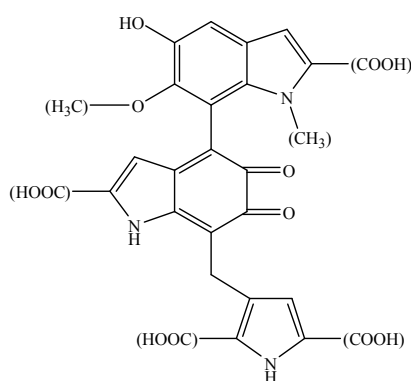


Fig. S1 The possible chemical structures of LM¹

References

1. S. Song, S. Li, N. Su, J. Li, F. Shi and M. Ye, *Food Funct.*, 2016, **7**, 3617-3627.