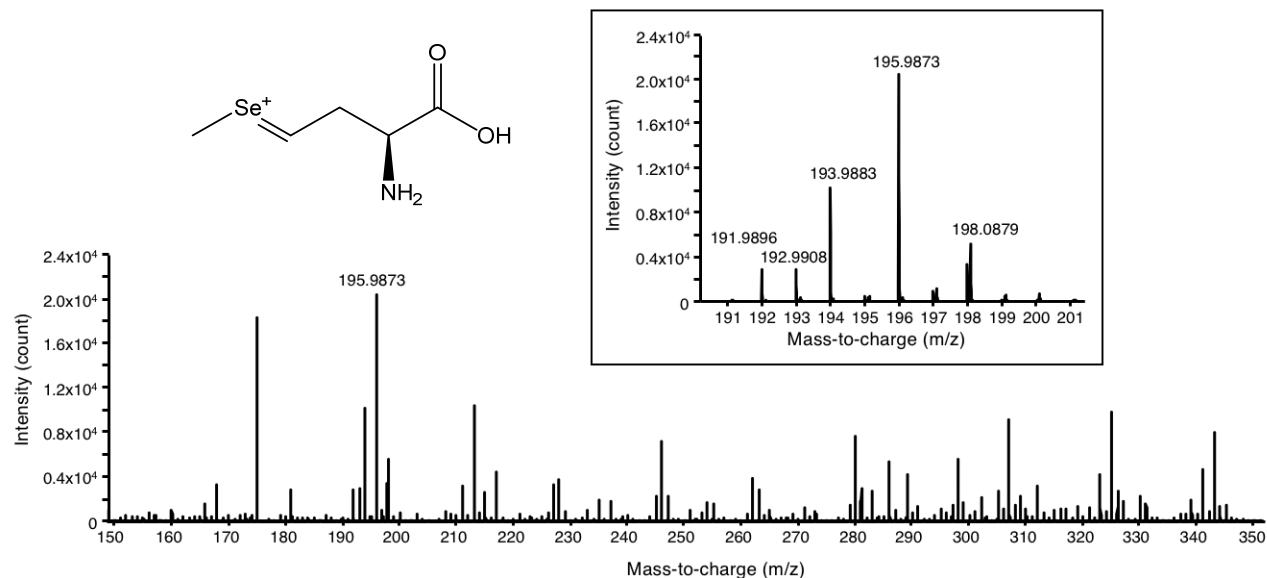


**Figure S1.**



**Figure S1.** Mass spectrum at retention times of 18.5–19.2 min at  $m/z$  195.98719 in the partially purified water extract of yeast exposed to MeSeCys. The mass spectrum was obtained by LC-ESI-Q-TOF-MS. The inset shows the magnified area around  $m/z$  195. The structure of the degradation product of SeMet, (3-amino-3-carboxypropylidene)(methyl)selenonium is depicted.