

Supporting information

Self-assembling bolaamphiphile-like collagen mimic peptides

Linyan Yao, Manman He, DongfangLi, Huanxiang Liu, Jiang Wu, Jianxi Xiao

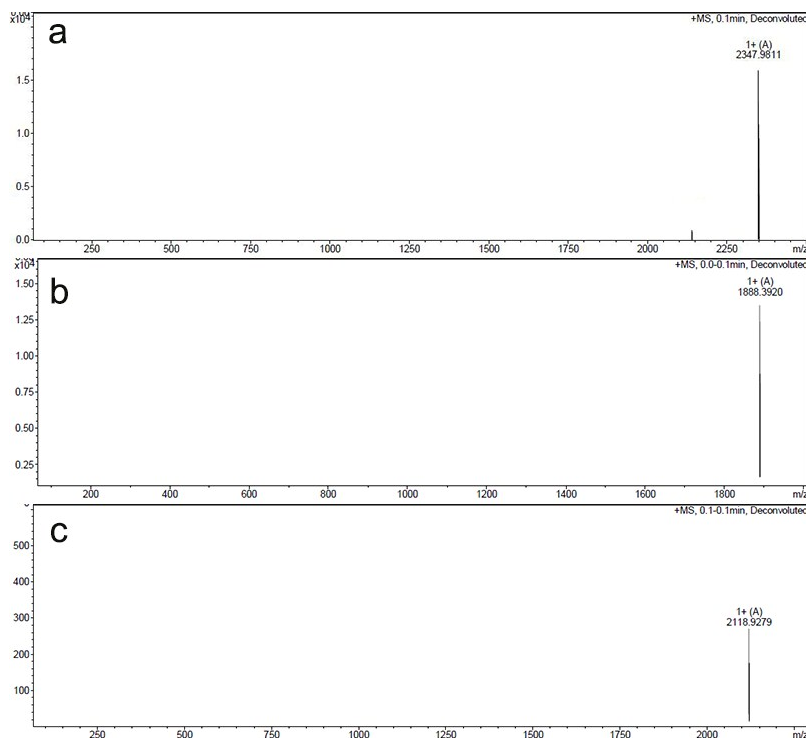


Figure S1. Mass spectra of collagen mimic peptides: $D_2(GPO)_7D_2$ (a), $(GPO)_7$ (b) and $D(GPO)_7D$ (c). m/z calculated 2349.5 $[M+H]^+$ for $D_2(GPO)_7D_2$, found 2348.0 $[M+H]^+$; m/z calculated 1889.1 $[M+H]^+$ for $(GPO)_7$, found 1888.4 $[M+H]^+$; m/z calculated 2119.3 $[M+H]^+$ for $D(GPO)_7D$, found 2118.9 $[M+H]^+$.

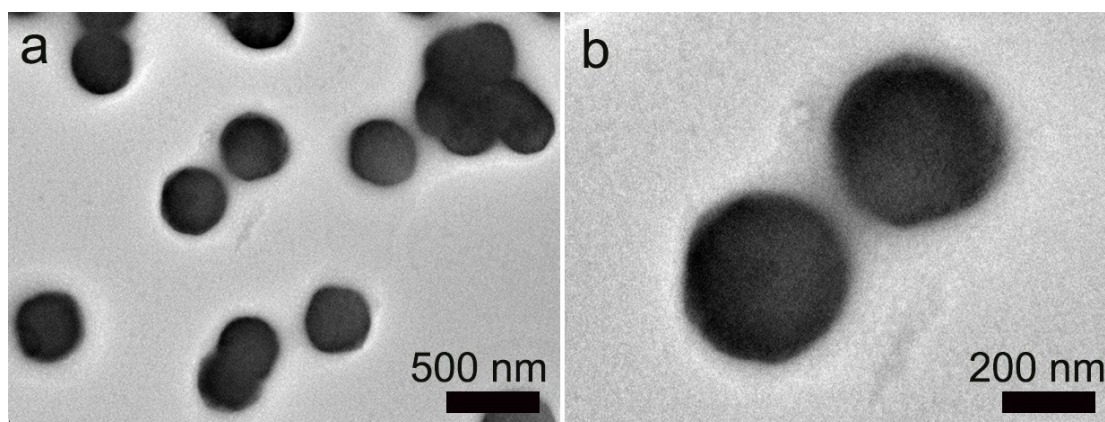


Figure S2. TEM images of peptide $D_2(GPO)_7D_2$ in 100 mM HEPES buffer with 100 mM NaCl at pH 7.0.

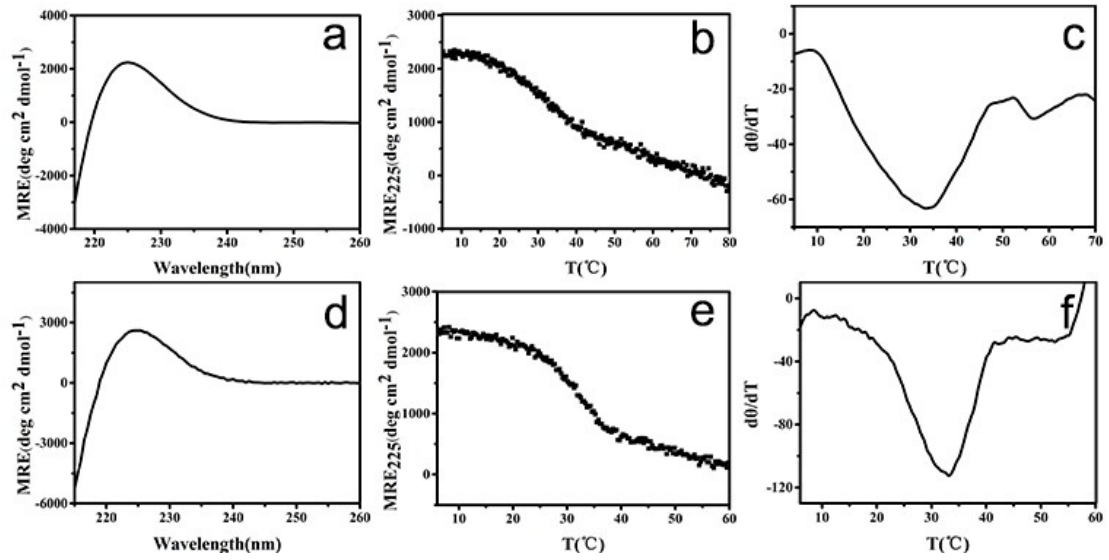


Figure S3. CD characterization of collagen mimic peptides $(GPO)_7$ (a-c) and $D(GPO)_7D$ (d-f). CD spectra (a, d), CD thermal unfolding (b, e) and the first derivative ($d\theta/dT$) of the CD unfolding curve (c, f). Peptide solutions with a concentration of 400 μ M were prepared in 10 mM phosphate buffer at pH 7.0.