

Supporting Information

Cation–anion interaction directed formation of functional vesicles and their biological application for nucleus-specific imaging

Qunshou Kong, Weihua Zhuang, Gaocan Li,* Qing Jiang* and Yunbing Wang

National Engineering Research Center for Biomaterials, Sichuan University, 29
Wangjiang Road, Chengdu 610064, China

E-mail: gaocanli@scu.edu.cn; jiangq@scu.edu.cn

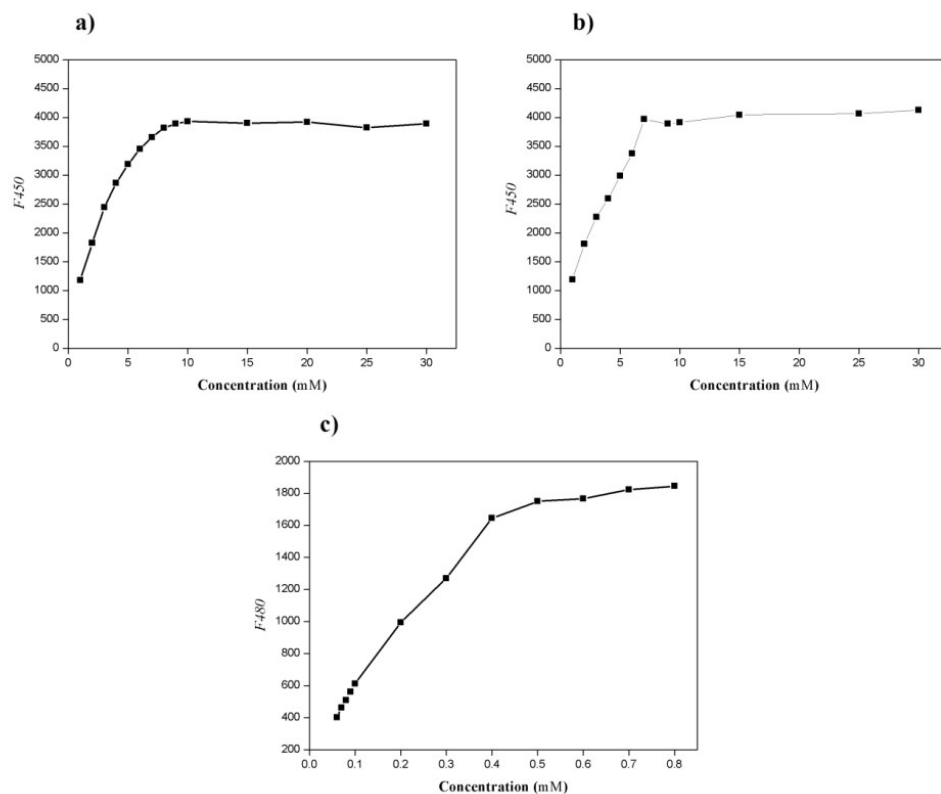


Fig. S1 Critical vesicle concentrations (CVC) of functional imidazolium salts: a) TPAI-C6; b) TPAI-C8; and c) TPEI-C8.

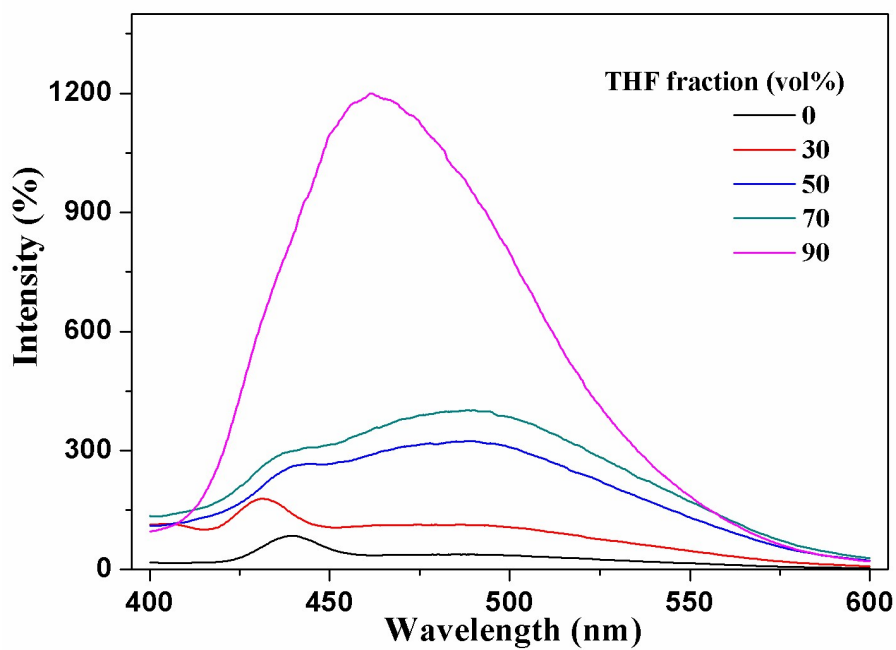


Fig. S2 PL spectra of TPEI-C8 (50 μM) in MeOH and MeOH/THF mixtures. Excitation wavelength: 330 nm.

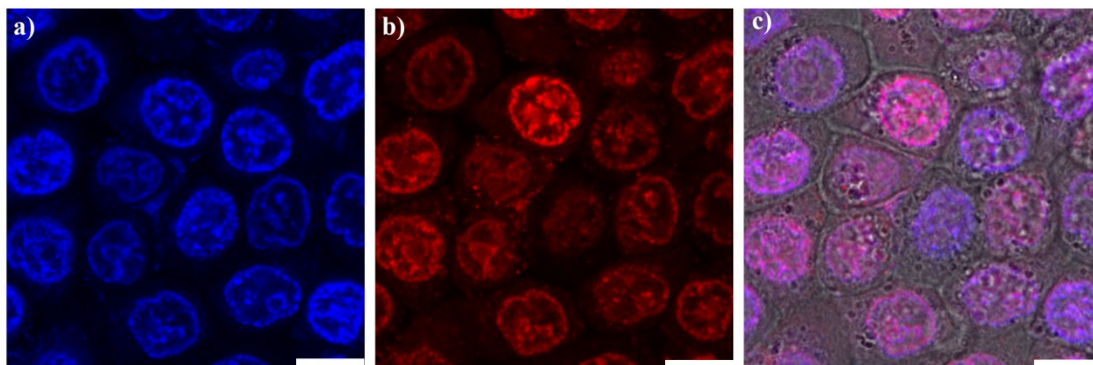


Fig. S3 Co-staining of HeLa cells with **TPEI-C8** and Reddot1: (a) **TPEI-C8** (50 μM) for 4 h ($\lambda_{\text{ex}} = 405 \text{ nm}$, $\lambda_{\text{em}} = 420\text{--}470 \text{ nm}$); (b) **Reddot1** for 5 min ($\lambda_{\text{ex}} = 633 \text{ nm}$, $\lambda_{\text{em}} = 650\text{--}670 \text{ nm}$); (c) panels (a) and (b) merged; and (d) bright-field image. Scale bar: 25 μm .

^1H and ^{13}C NMR spectra of **TPEI-C6**, **TPEI-C8** and **TPEI-C8**.

