

Supporting information

An I₆P₇ Peptide modified Fluorescent Probe for Bio-imaging

Yuxin Yao[‡], Lijuan Gui[‡], Zhenwei Yuan, Yisha Chen, Chen Wei, Qing He, Fei Wang,

Mingjun Xu, Haiyan Chen*

^aDepartment of Biomedical Engineering, School of Engineering, State Key Laboratory of

Natural Medicines, China Pharmaceutical University, 24 Tongjia Lane, Gulou District,

Nanjing 210009, China

E-mail: chenhaiyan@cpu.edu.cn

[‡]These authors contributed equally to this work.

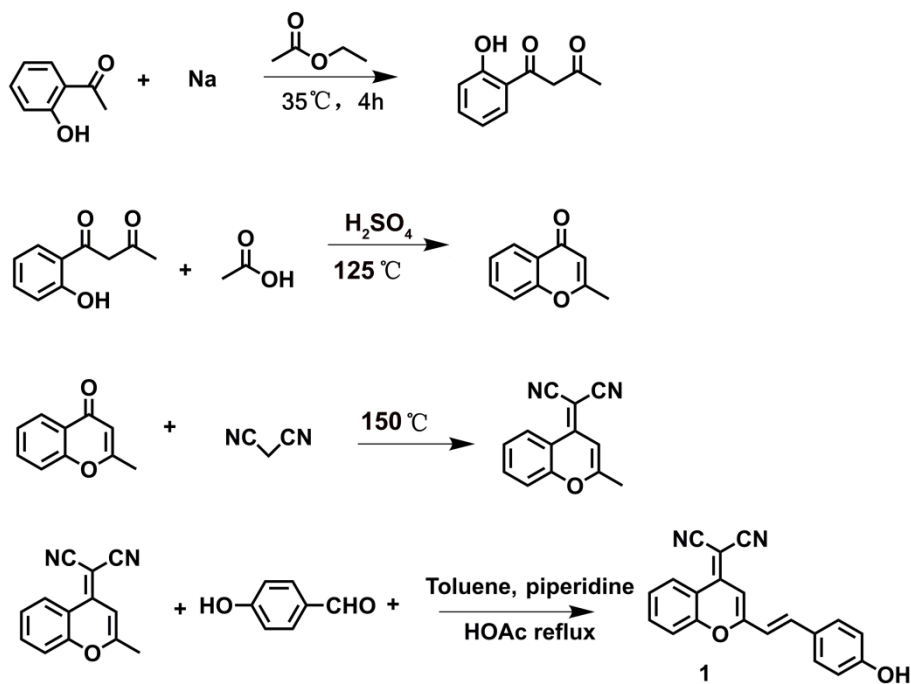


Fig. S1 Compound 1 synthesis route.

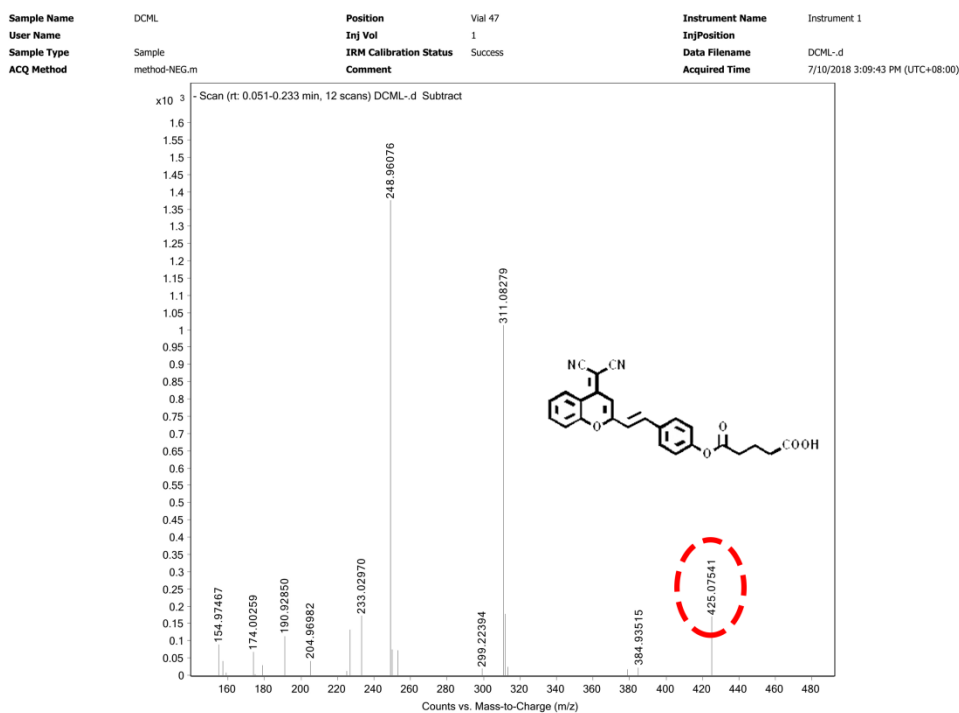


Fig. S2 The MALDI-TOF-Mass spectra of DCM-L.

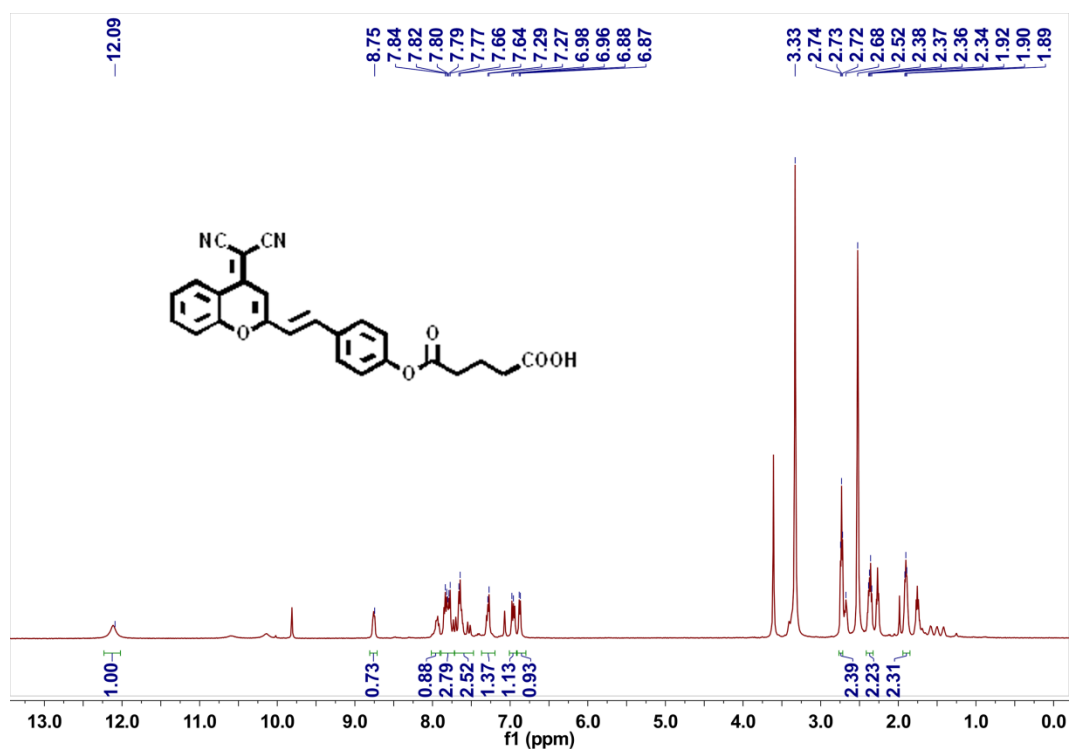


Fig. S3 The ¹H NMR spectra of DCM-L.

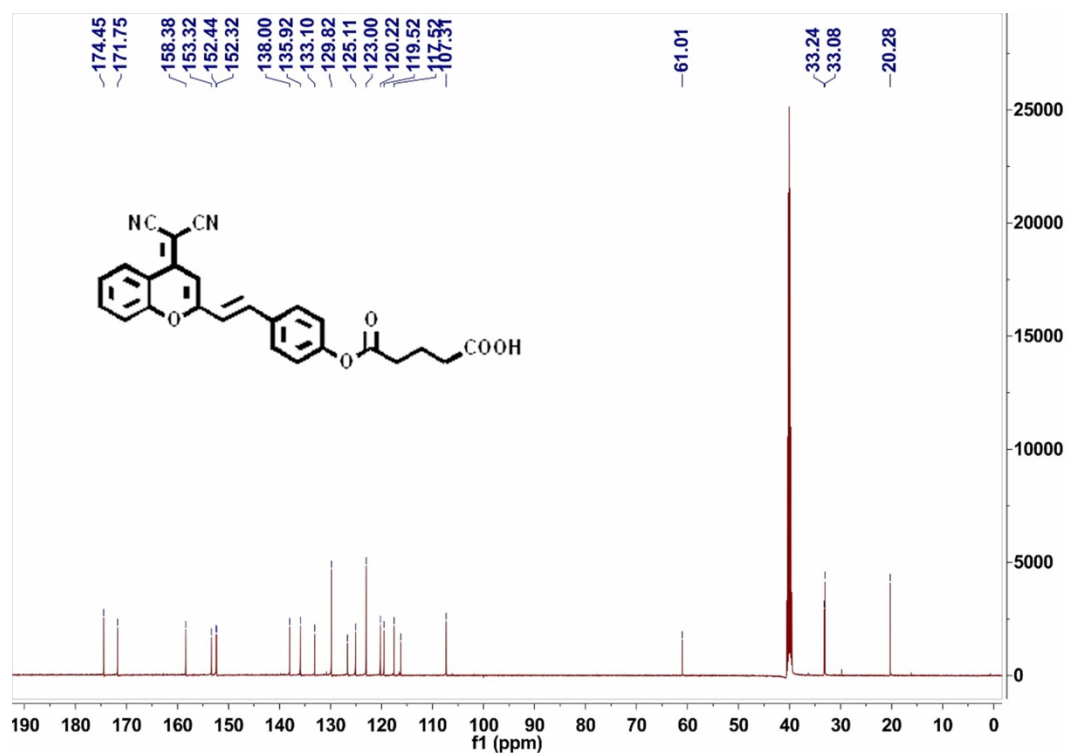


Fig. S4 The ¹³C NMR spectra of DCM-L.



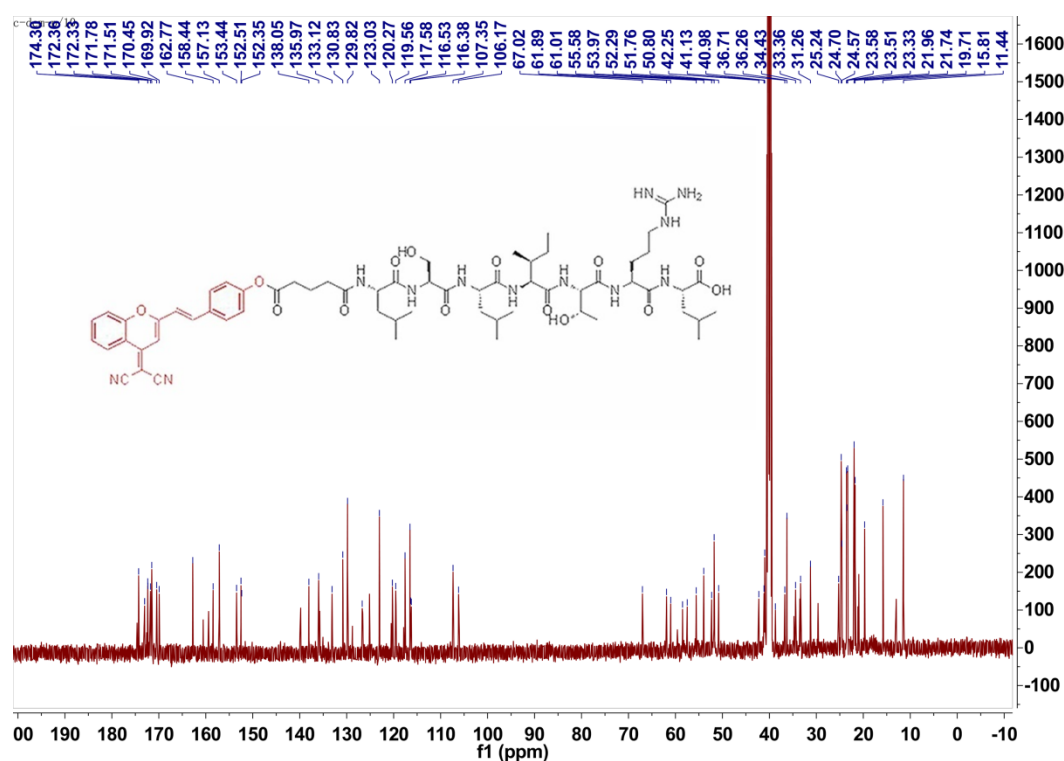


Fig. S7 The ^{13}C NMR spectra of DMP.

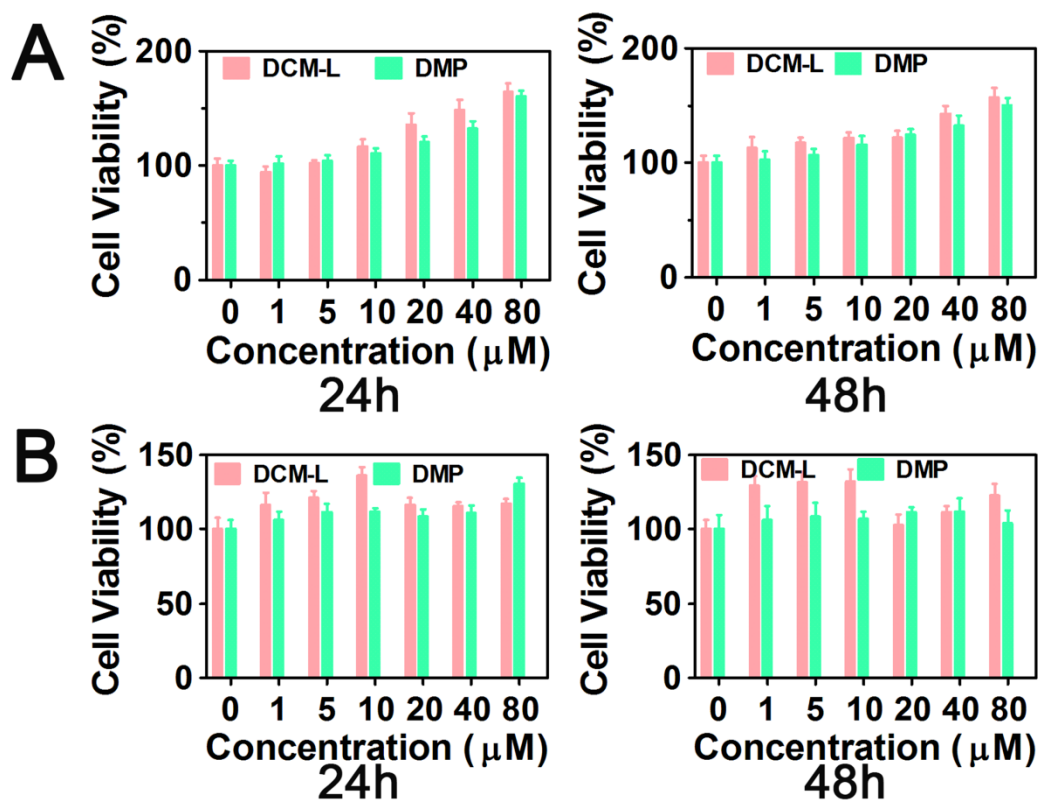


Fig. S8 Cell viability of HUVEC (A) and U87 (B) cells incubation with DCM-L, DMP for 24 h and 48 h respectively. Data are expressed as mean \pm S.D. (n = 4).