

Supporting Information

Supramolecular Self-assemblies of Inverted Cucurbit[7]uril with Biogenic Amines

Pei-Hui Shan,^a Zhi-Rui Zhang,^b Dong Bai,^a Bing Bian,^c Zhu Tao,^a and Xin Xiao,^{a*}

a P. H. Shan, X. Xiao, D. Bai, Z. Tao

Key Laboratory of Macrocyclic and Supramolecular Chemistry of Guizhou Province, Guizhou University,
Guiyang 550025, China

b Z. R. Zhang

Department of Pediatric, The Ninth People's Hospital Of Chongqing, Chongqing 400700, China

c B. Bian

College of Chemistry and Environmental Engineering, Shandong University of Science and Technology,
Qingdao 266590, China.

Table of Contents

Figure S1. ¹ H NMR spectroscopic data of <i>i</i> Q[7] with guest HI in D ₂ O.....	2
Figure S2. ¹ H NMR spectroscopic data of <i>i</i> Q[7] with guest SPD in D ₂ O.....	2
Figure S3. 2D COSY spectra of <i>i</i> Q[7] with guest SPM in D ₂ O.....	3
Figure S4. 2D COSY spectra of <i>i</i> Q[7] with guest SPD in D ₂ O.....	3
Figure S5. ITC profile of <i>i</i> Q[7] with Five biogenic amines.....	4

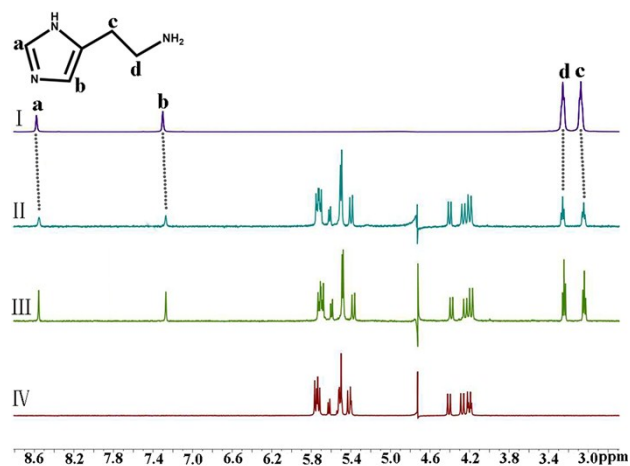


Figure S1 ^1H NMR spectra (400 MHz, D_2O) of *i*Q[7] in the absence (IV) and presence of 0.67 (II), 1.05 (III) equiv. of HI and free guest HI (I) at 20 °C.

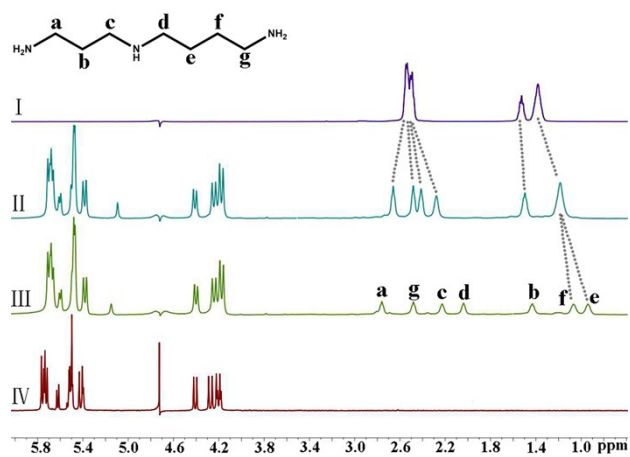


Figure S2 ^1H NMR spectra (400 MHz, D_2O) of *i*Q[7] in the absence (IV) and presence of 0.78 (II), 0.96 (III) equiv. of SPD and free guest SPD (I) at 20 °C.

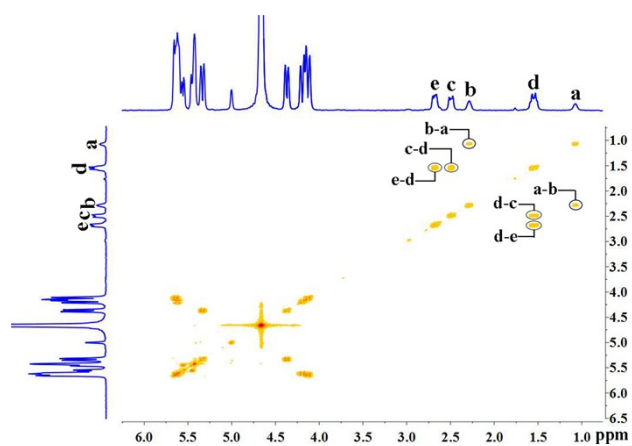


Figure S3 2D COSY NMR spectrum of SPM in prescence of 1.05 eq *i*Q[7] in D₂O at 20°C.

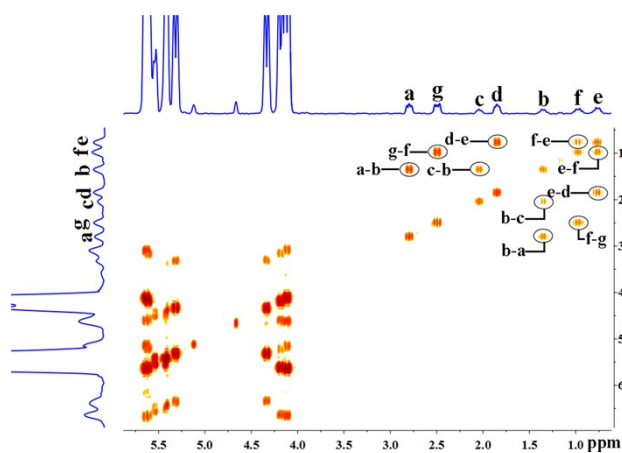


Figure S4 2D COSY NMR spectrum of SPD in prescence of 0.65 eq *i*Q[7] in D₂O at 20°C

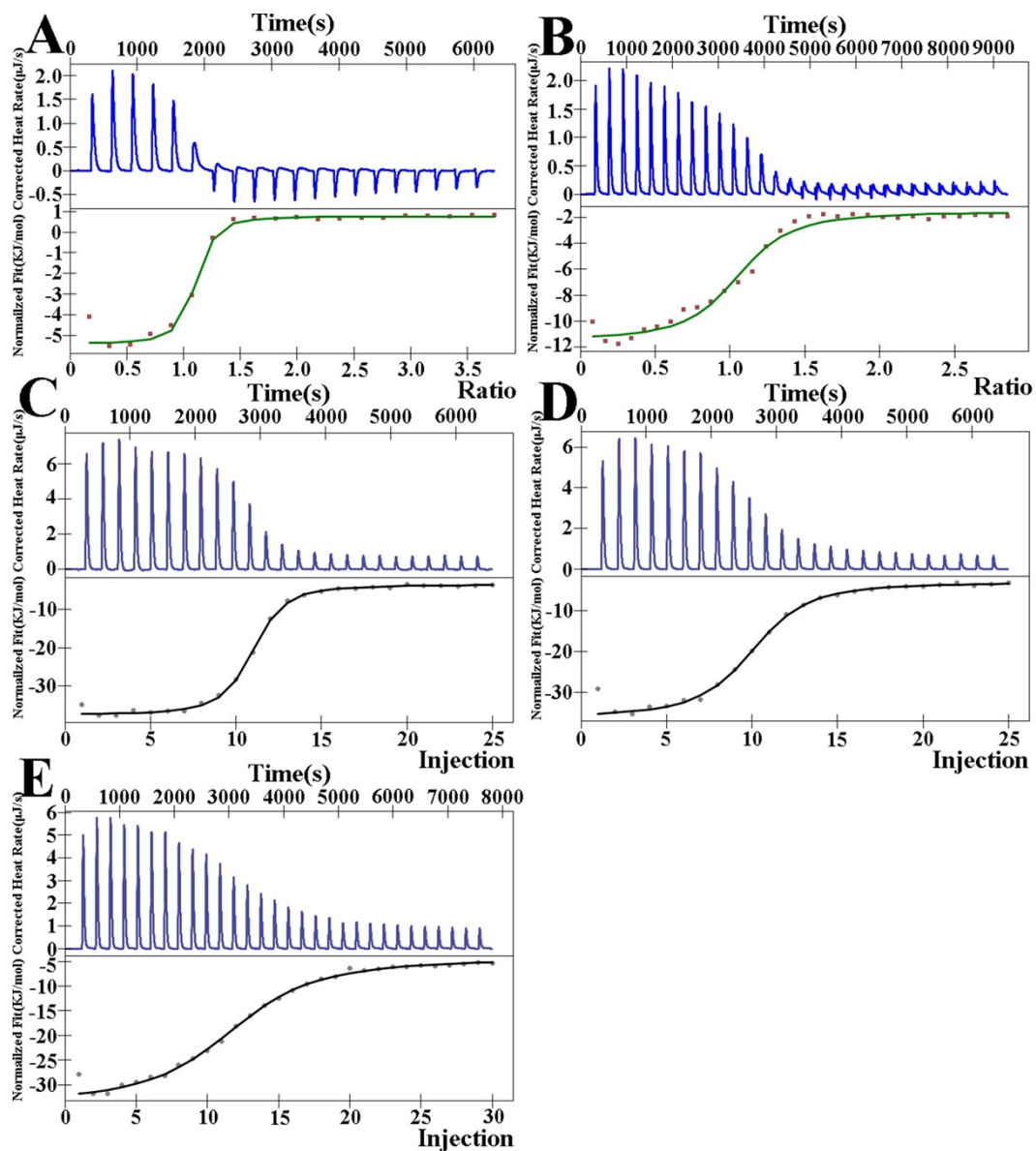


Figure S5 ITC profile of *i*Q[7] with SPM(A)、SPD(B)、PEA(C)、TA(D) and TR(E) in aqueous solution at 25°C.